



VITA
Properties

Ladbroke Grove, London W10 | £750,000

- Elegant first floor apartment
- High ceilings, large windows
- Open plan kitchen
- Moments to Golborne Road and Portobello Road

- Renovated

"Vita Properties have been tremendously helpful throughout the process of securing/renting my flat. Informative about the property, prompt communication, easy to use dashboard for sharing of information, and pleasant to work with. Highly recommend!"

Kate Brookfield x Vita Properties present this elegantly renovated first floor apartment, moments to Golborne Road and Portobello Road.

Situated on Ladbroke Grove, opposite the junction of Chesterton Road, this beautiful, light filled home is the perfect purchase for those seeking to live within such close proximity to London's most fashionable neighbourhood.

Currently arranged as a one bedroom apartment, doors to the dining space can be reinstated to recreate the second bedroom whilst by no means limiting the generous open plan kitchen/living area. Floor to ceiling windows showcase the high ceilings, and the well designed kitchen sits neatly in a recess of the living space. A few steps lead down into the main bedroom which is complete with fitted storage and located to the rear of the apartment with garden views.

View the content on Instagram
[@kate_the_agent](#)



Kate Brookfield

✉ Kate.brookfield@vitaproperties.uk

☎ +4478 1365 5431



- 🏠 Flat
- 🔑 Leasehold
- 🛏 x 2
- 🛋 x 1
- 🚿 x 1

SCAN FOR
A VIDEO
WALKTHROUGH



"I was very impressed with Vita and their network of buyers. When the sale of my flat fell through (twice) they worked extremely hard to find new buyers in a difficult market - thank you!"



"Working with Vita properties has been a smooth experience! No complaints at all. Our letting agent, Diana has been fantastic and very helpful throughout the whole process. I would highly recommend both Vita properties and Diana."



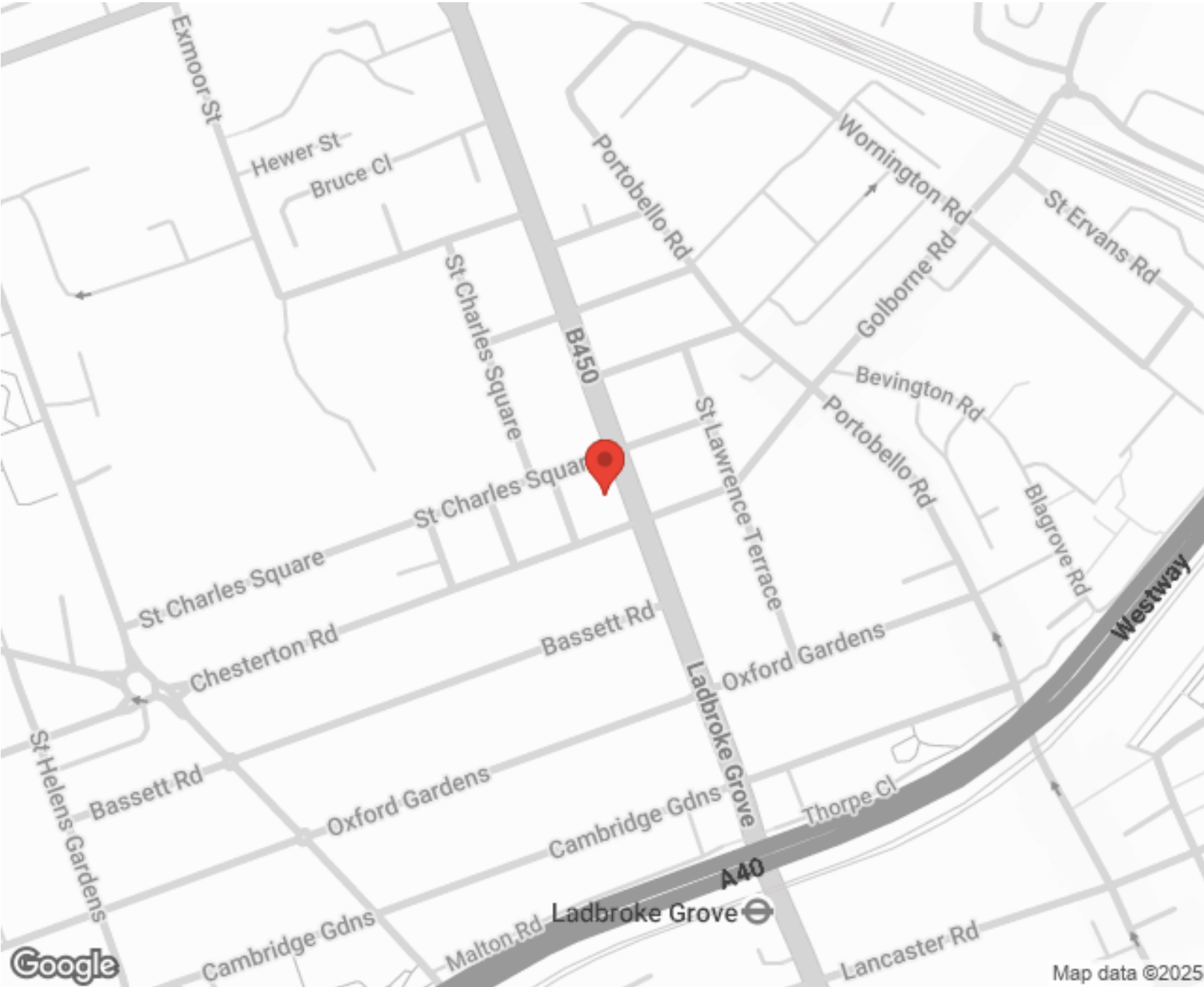
"I used Vita properties to find a flat recently and it was an overall professional, personalised and positive experience. Saira went the extra mile to accommodate to our needs and quick to help us whenever possible."



MORE INFO, PICTURES,
CONTACT ON
OUR WEBSITE



"Vita Properties is a very professional agency. My experience with them was incredible and the entire team was very helpful and kind throughout the renting process. I'd highly recommend!"



Score	Energy rating	Current	Potential
92+	A		
81-91	B		
69-80	C		77 C
55-68	D	65 D	
39-54	E		
21-38	F		
1-20	G		

SCAN FOR MORE
GOOGLE REVIEWS

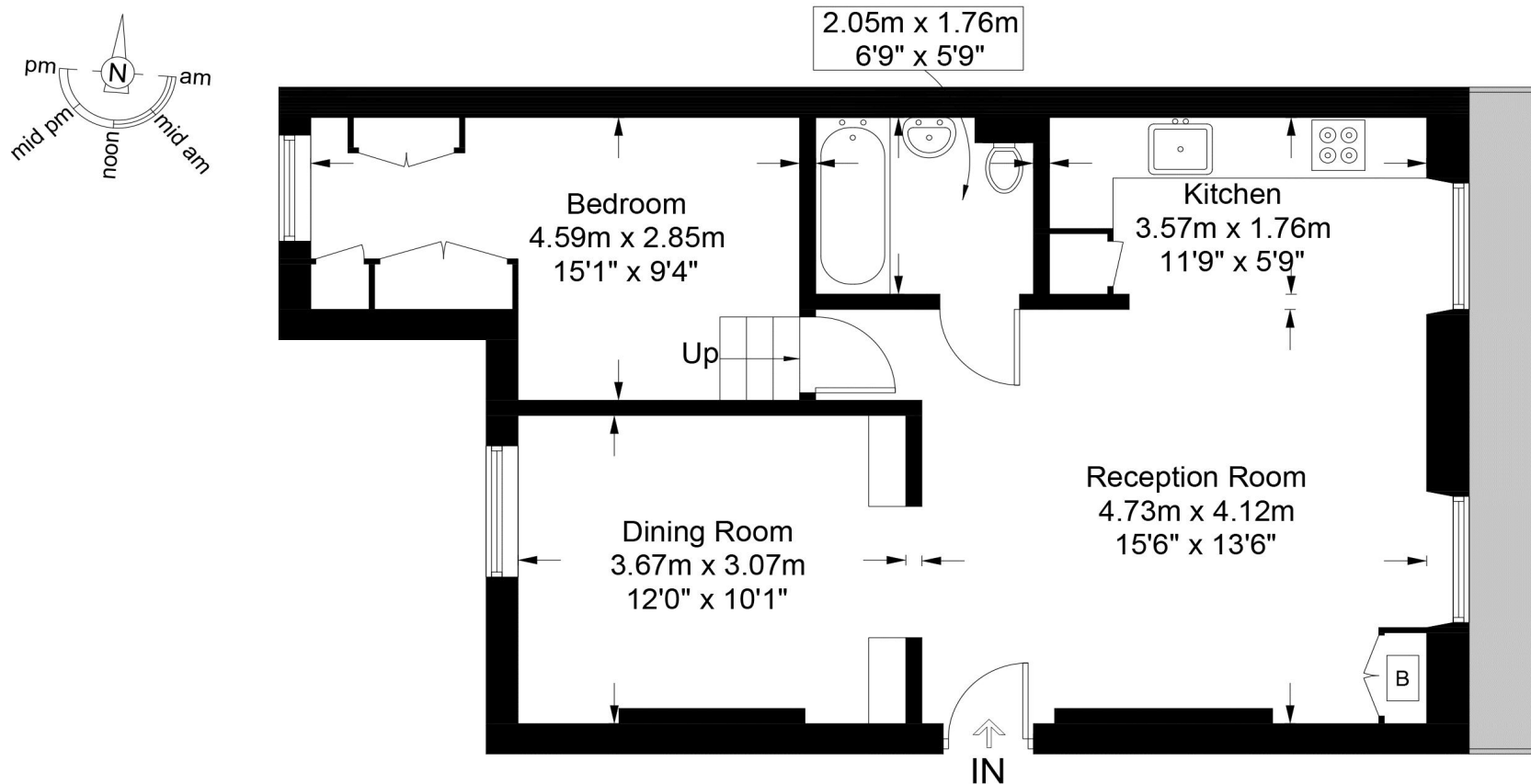
Google
★★★★★
4.9 Stars | 132 Reviews

Find us on social media

vitaproperties
 VitaProperties
 VitaProperties

Ladbroke Grove, W10

Approximate Gross Internal Area = 601 sq ft / 55.8 sq m



First Floor

This plan is for layout guidance only and is not drawn to scale unless stated. All dimensions, including windows, doors, and the Total Gross Internal Area (GIA), are approximate. For precise measurements, please consult a qualified architect or surveyor before making any decisions based on this plan.



Certified
Property
Measurer