



VITA
Properties

Devonshire Place, Marylebone, London W1G | £1,200,000

- Marylebone Village location
- Beautiful light filled apartment
- 3 bedrooms, 1.5 bathrooms
- Excellent storage

- Moments to Royal parks
- Walking distance to Great Portland Street and London's West End

"Vita Properties have been tremendously helpful throughout the process of securing/renting my flat. Informative about the property, prompt communication, easy to use dashboard for sharing of information, and pleasant to work with. Highly recommend!"

Kate Brookfield x Vita Properties present this light filled three bedroom apartment located within the heart of Marylebone Village W1G.

Occupying the top floor of a handsome mid terrace building, the apartment offers in excess of 1060 sq ft of beautifully presented internal space with sky lights, flooding the property with natural light.

Upon entering, an internal staircase leads into the wide hallway, with high ceilings and skylight overhead. To the front of the apartment, a generous living space with neatly place dining area and double pocket doors through to a large kitchen with decorative floor tiles and stainless steel splashbacks.

Three good size double bedrooms are positioned facing the rear of the apartment, all enjoying roof top views, and the main bathroom with skylight is accompanied by an additional guest WC.

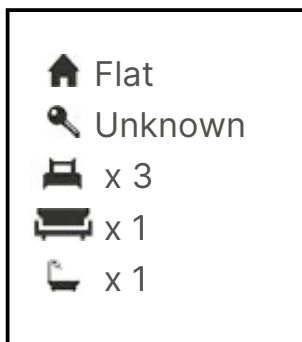
Devonshire Place is an enviable location just footsteps to Marylebone High Street and a short walk to the West End. Enjoy quick

transport links include Regents Park and Baker Street (Bakerloo Line), Oxford Circus (Bakerloo, Central and Victoria Line) and Bond Street (Jubilee, Elizabeth and Central Line).



Kate Brookfield

✉ Kate.brookfield@vitaproperties.uk
☎ +4478 1365 5431



access to the Royal Parks with Regents Park within a 6 minute walk and Hyde Park within a 10 minute walk.

"I was very impressed with Vita and their network of buyers. When the sale of my flat fell through (twice) they worked extremely hard to find new buyers in a difficult market - thank you!"



"Working with Vita properties has been a smooth experience! No complaints at all. Our letting agent, Diana has been fantastic and very helpful throughout the whole process. I would highly recommend both Vita properties and Diana."



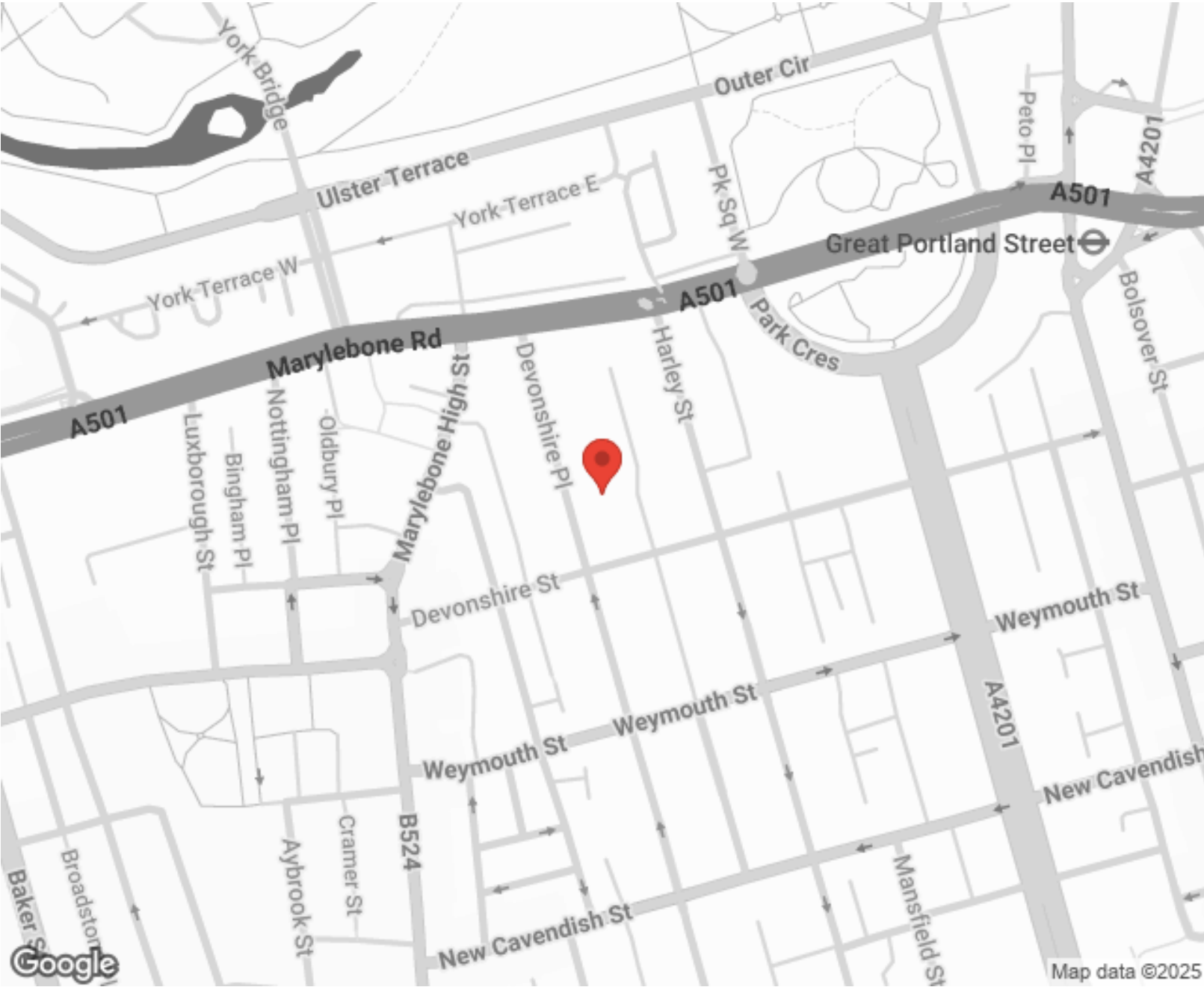
"I used Vita properties to find a flat recently and it was an overall professional, personalised and positive experience. Saira went the extra mile to accommodate to our needs and quick to help us whenever possible."



MORE INFO, PICTURES,
CONTACT ON
OUR WEBSITE



"Vita Properties is a very professional agency. My experience with them was incredible and the entire team was very helpful and kind throughout the renting process. I'd highly recommend!"



| Score | Energy rating | Current | Potential |
|-------|---------------|---------|-----------|
| 92+ | A | | |
| 81-91 | B | | |
| 69-80 | C | | |
| 55-68 | D | 61 D | 61 D |
| 39-54 | E | | |
| 21-38 | F | | |
| 1-20 | G | | |

SCAN FOR MORE
GOOGLE REVIEWS

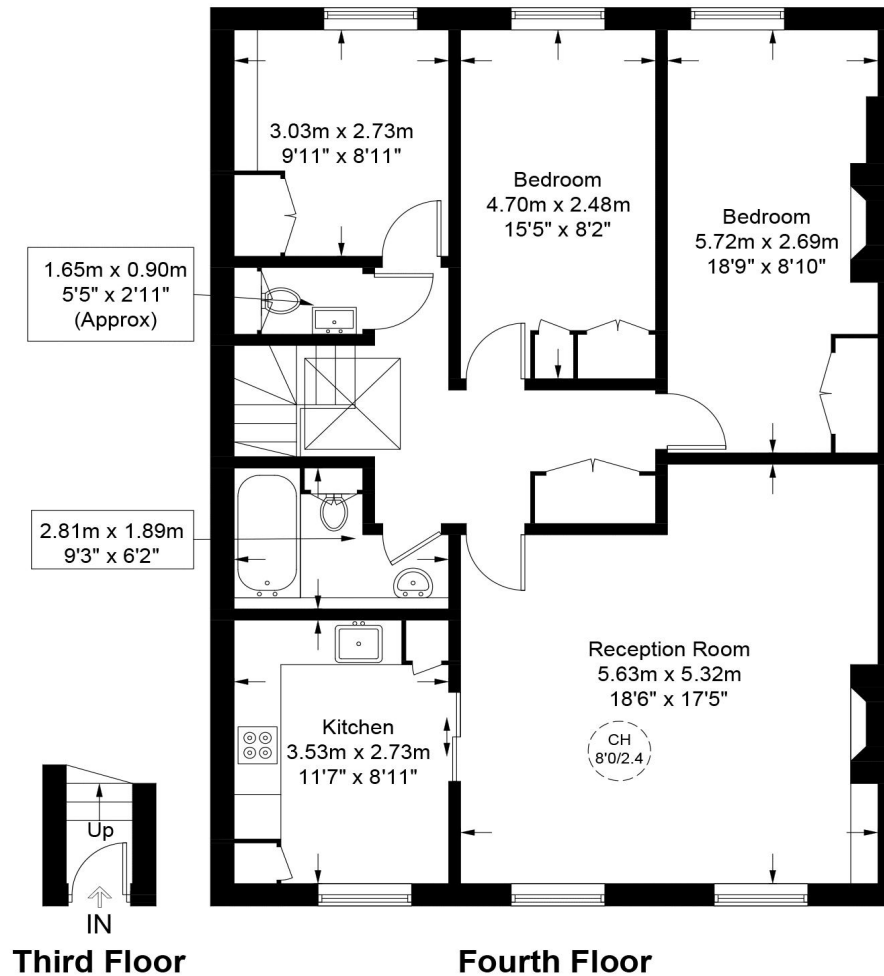
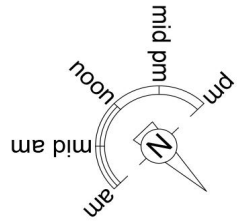
Google
★★★★★
4.9 Stars | 132 Reviews

Find us on social media

vitaproperties
 VitaProperties
 VitaProperties

Devonshire Place, W1G

Approximate Gross Internal Area = 1036 sq ft / 96.3 sq m



This plan is for layout guidance only and is not drawn to scale unless stated. All dimensions, including windows, doors, and the Total Gross Internal Area (GIA), are approximate. For precise measurements, please consult a qualified architect or surveyor before making any decisions based on this plan.



**Certified
Property
Measurer**