



## Bracknell Gardens, Hampstead, London NW3 | £900,000

- Proximity to Hampstead Village and Heath: Just moments away from the charming shops, cafes, and the natural beauty of Hampstead Heath.
- Large Modern Open Plan Kitchen: Fully equipped with modern appliances and plenty of counter space.
- Wood Floored Reception Room: A spacious and elegant area
- Two Bathrooms: One en suite for the master bedroom, ensuring privacy and convenience.
- Chain Free

perfect for relaxation and entertaining.

• Two Double Bedrooms: Ample space for comfortable living, with large windows allowing natural light to flood in.  
"Vita Properties have been tremendously helpful throughout the process of securing/renting my flat. Informative about the property, prompt communication, easy to use dashboard for sharing of information, and pleasant to work with. Highly recommend!"

---

This bright and spacious two double bedroom top floor flat (Entrance on the first floor) offers a comfortable and stylish living experience. With two bathrooms, including one en suite and a recently fitted kitchen. It is nestled in the quiet back streets between Hampstead and Finchley Road, providing a peaceful yet accessible location.

This immaculate flat combines modern amenities with a prime location, making it an ideal choice for those seeking both comfort and convenience in a vibrant area.



Oliver Kent

✉ [oliver.kent@vitaproperties.uk](mailto:oliver.kent@vitaproperties.uk)

☎ +4477 7274 0351



🏠 Flat

🔑 Share of Freehold

🛏 x 2

🛋 x 1

🚿 x 2

SCAN FOR  
A VIDEO  
WALKTHROUGH





"I was very impressed with Vita and their network of buyers. When the sale of my flat fell through (twice) they worked extremely hard to find new buyers in a difficult market - thank you!"

---



"Working with Vita properties has been a smooth experience! No complaints at all. Our letting agent, Diana has been fantastic and very helpful throughout the whole process. I would highly recommend both Vita properties and Diana."

---





"I used Vita properties to find a flat recently and it was an overall professional, personalised and positive experience. Saira went the extra mile to accommodate to our needs and quick to help us whenever possible."

---

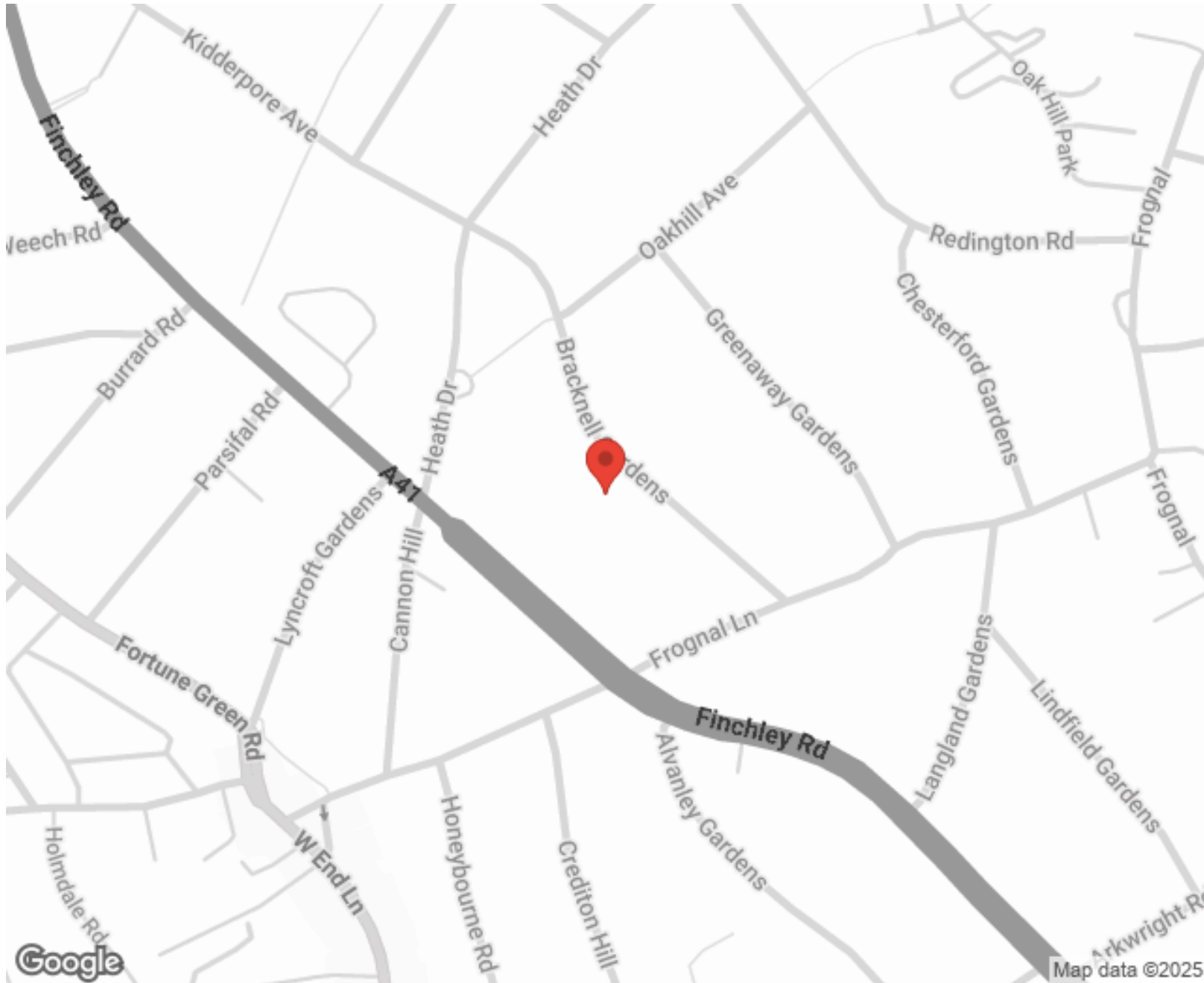


MORE INFO, PICTURES,  
CONTACT ON  
OUR WEBSITE



"Vita Properties is a very professional agency. My experience with them was incredible and the entire team was very helpful and kind throughout the renting process. I'd highly recommend!"

---



SCAN FOR MORE  
GOOGLE REVIEWS

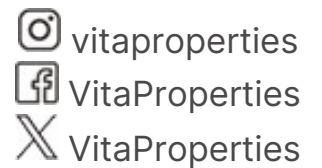


Google

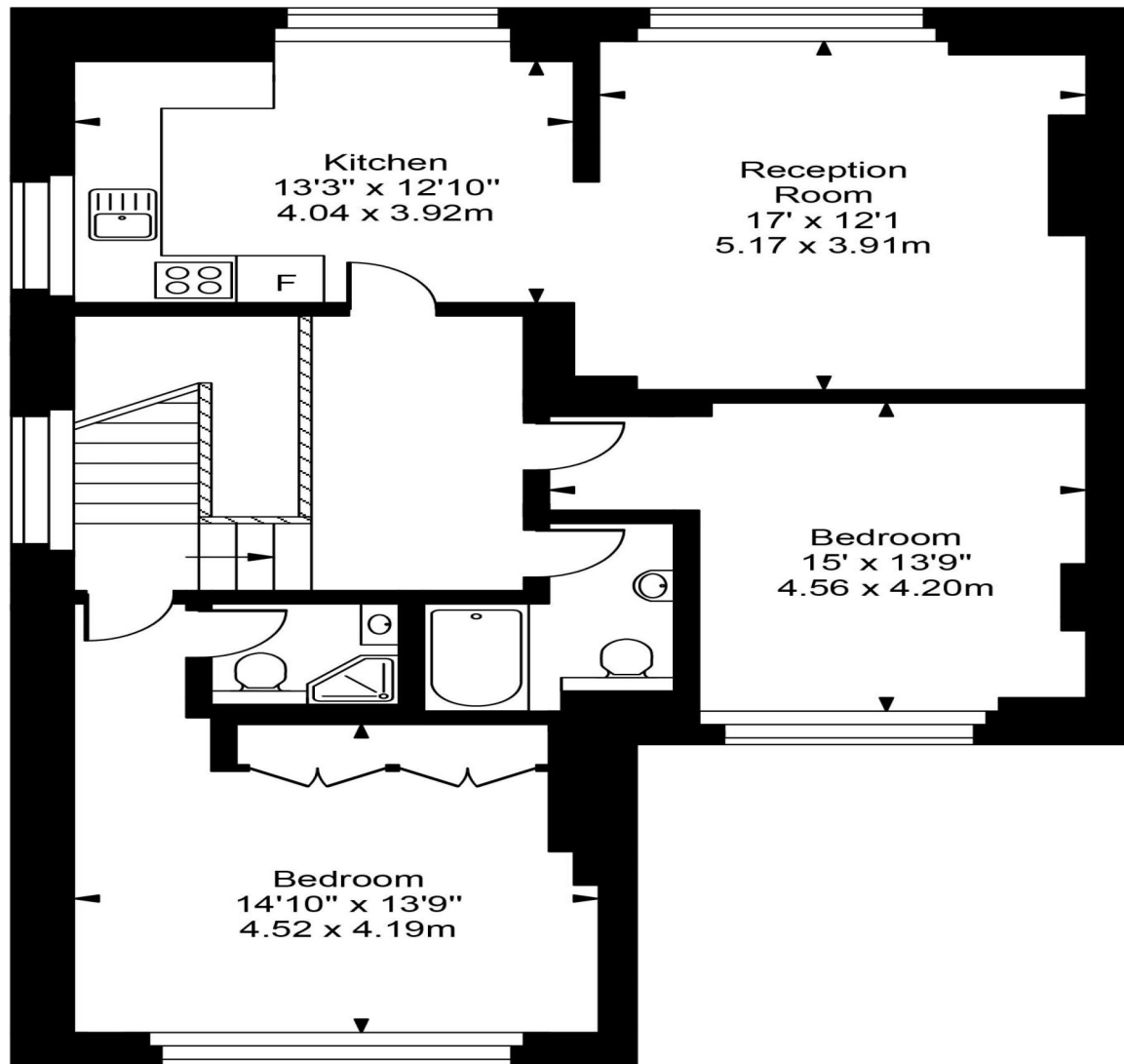
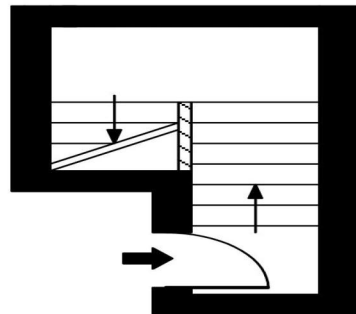
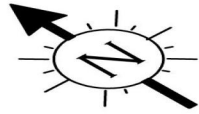


4.9 Stars | 132 Reviews

Find us on social media



# Bracknell Gardens



Approx Gross Internal Area      **1223 Sq Ft - 113.65 Sq M**

For Illustration Purposes Only - Not To Scale  
Floor plan by [www.creativeplanetlk.com](http://www.creativeplanetlk.com)