



VITA
Properties

Wrentham Avenue, Kensal Rise London NW10 | £850,000

- Beautiful three bedroom apartment with elegant interiors
- Arranged over three levels
- Wonderful open plan living space with period details
- Highly sought after road between Queens Park & Kensal Rise

- Far reaching views into central London
- Excellent fitted storage throughout

"Vita Properties have been tremendously helpful throughout the process of securing/renting my flat. Informative about the property, prompt communication, easy to use dashboard for sharing of information, and pleasant to work with. Highly recommend!"

Kate Brookfield x Vita Properties present this extremely beautiful three bedroom apartment, situated on one of the most sought after roads in Queens Park and Kensal Rise, NW10.

Occupying the upper floors of an imposing Edwardian mid-terrace property, this elegant and well-styled home spans in excess of 1,000 sq ft with accommodation over three levels. Entering through a charming hallway with original tiles and period features, the flat entrance is at first floor level and a short internal staircase invites you to the first level of the apartment. An extremely bright and attractive living space is situated to the front, benefiting from a bay window, high ceilings and an original fireplace. An elegant kitchen with bevelled grey cabinets and glass fronted display units is smartly arranged to one side. The floor to ceiling units take advantage of the impressive ceiling height, while the soft backlighting opens up the space. Underfoot, a light herringbone floor by Havwoods and a calming colour scheme bring elegance to the space.

th a large window frames the green outlook, enjoying stunning sunrises and views over London. On a clear day one can see as far as Battersea power station. The third bedroom fits a single bed and makes for a good multi purpose room, such as a study or children's room, thanks to cleverly recessed storage. The family bathroom completes this floor. The upper level hosts a generous principal suite with wide vista window, skylight and velux windows. Floor to ceiling fitted wardrobes by YK Joinery and wooden floors by Havwoods, add a luxurious touch to the space, and an en suite bathroom is finished with Fired Earth floor tiles, Burlington fittings, a claw foot bath tub, separate shower and bare brick wall feature.

Wrentham Avenue is

-  Flat
-  Share of Freehold
-  x 3
-  x 1
-  x 2



Kate Brookfield

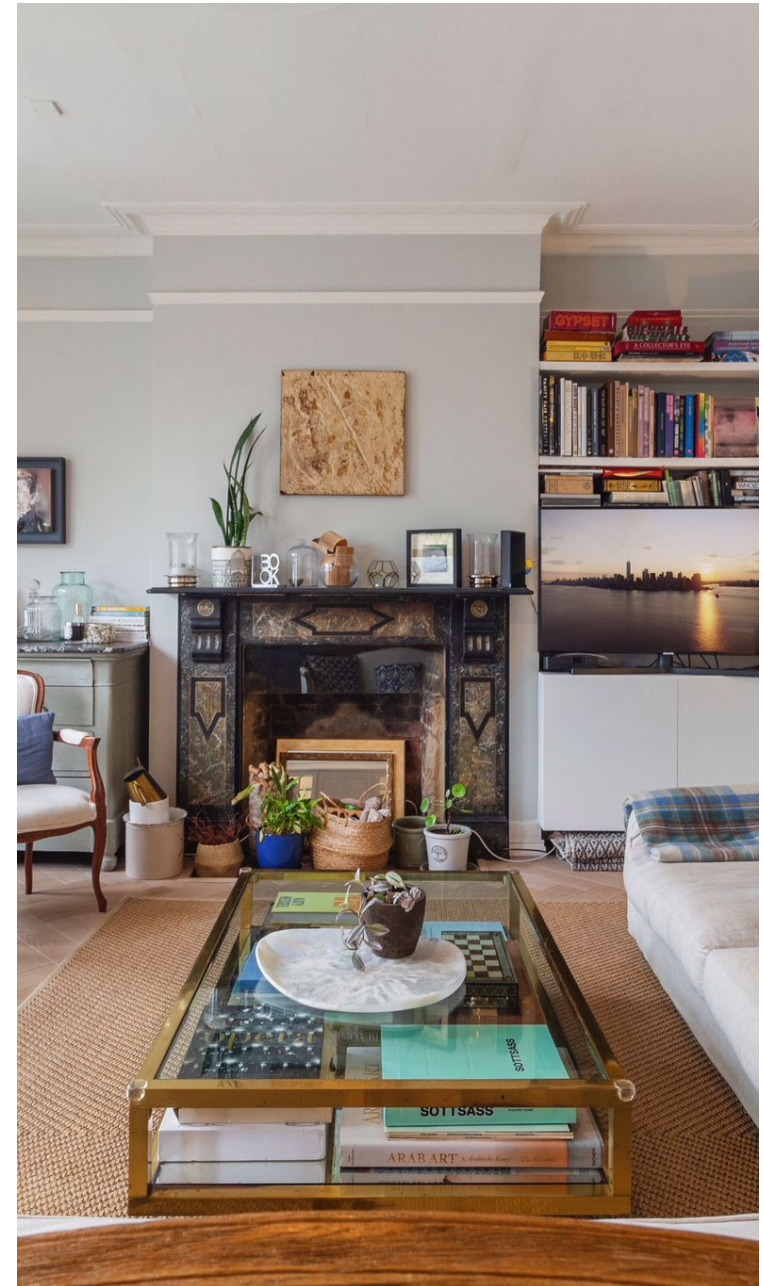
✉ Kate.brookfield@vitaproperties.uk
☎ +4478 1365 5431



On the next level, a wonderful

second bedr

"I was very impressed with Vita and their network of buyers. When the sale of my flat fell through (twice) they worked extremely hard to find new buyers in a difficult market - thank you!"



"Working with Vita properties has been a smooth experience! No complaints at all. Our letting agent, Diana has been fantastic and very helpful throughout the whole process. I would highly recommend both Vita properties and Diana."



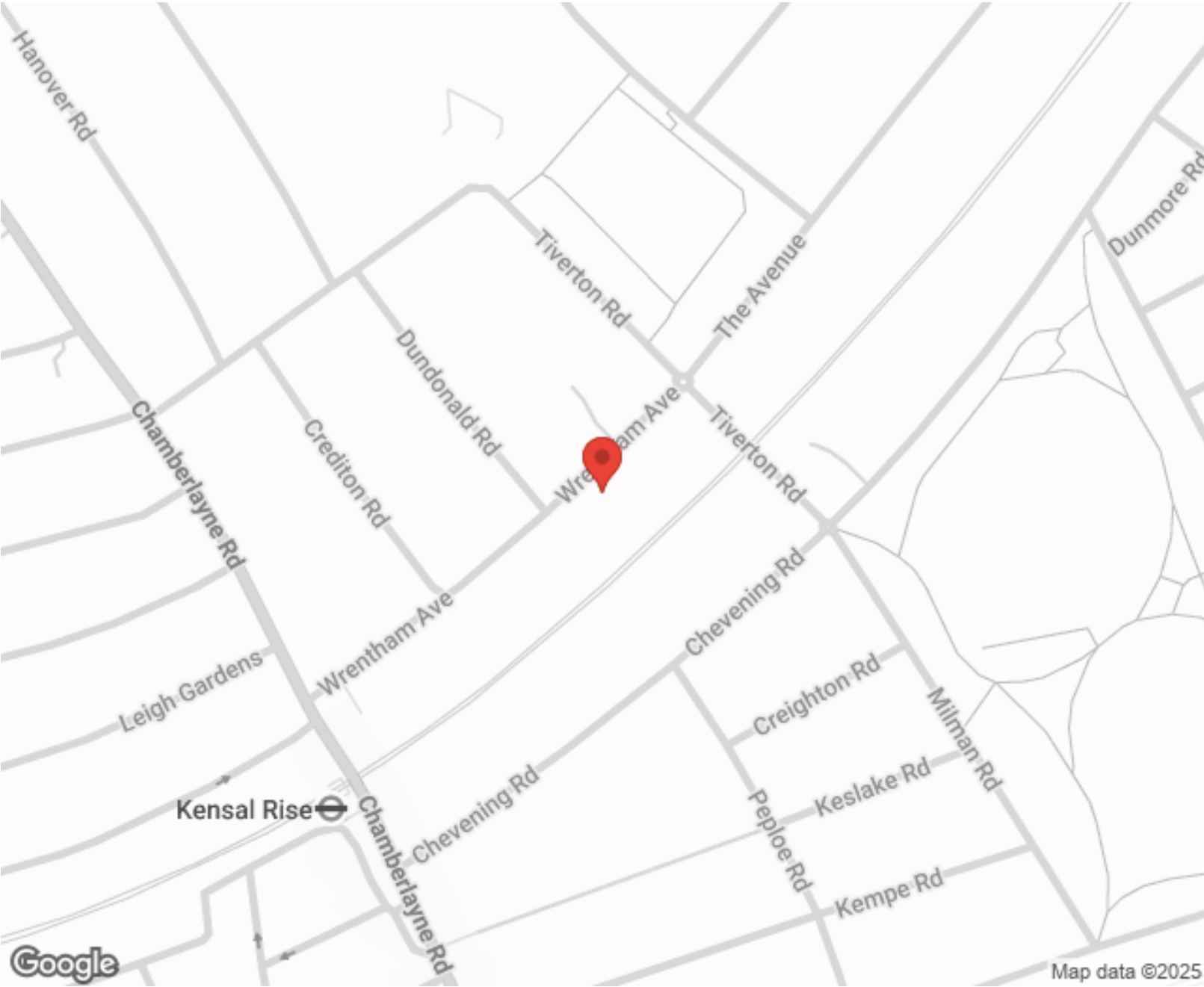
"I used Vita properties to find a flat recently and it was an overall professional, personalised and positive experience. Saira went the extra mile to accommodate to our needs and quick to help us whenever possible."



MORE INFO, PICTURES,
CONTACT ON
OUR WEBSITE



"Vita Properties is a very professional agency. My experience with them was incredible and the entire team was very helpful and kind throughout the renting process. I'd highly recommend!"



Score	Energy rating	Current	Potential
92+	A		
81-91	B		
69-80	C		71 C
55-68	D	61 D	
39-54	E		
21-38	F		
1-20	G		

SCAN FOR MORE
GOOGLE REVIEWS

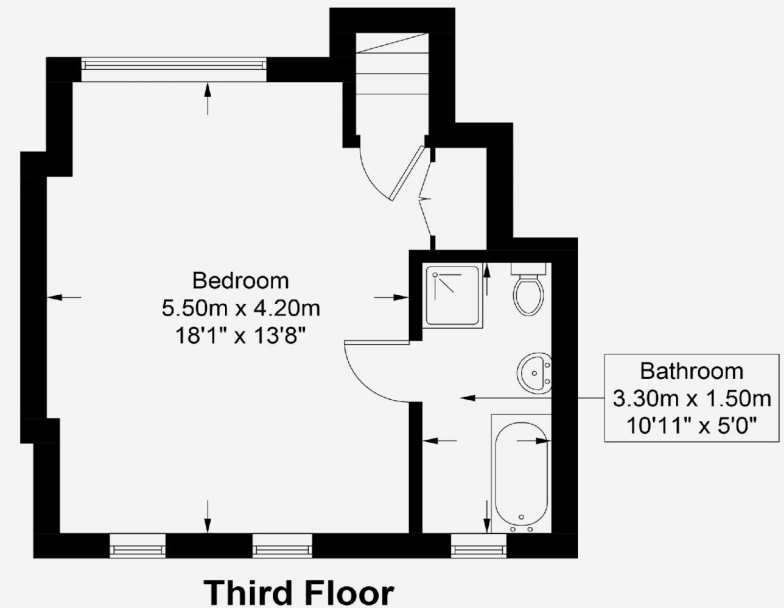
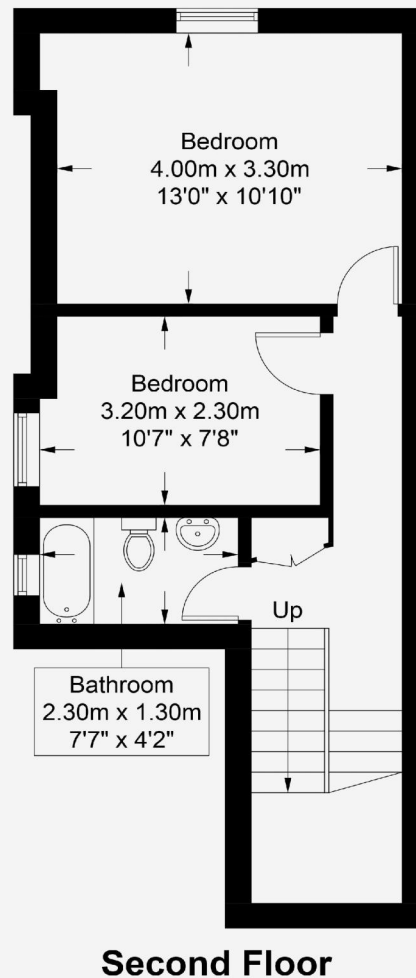
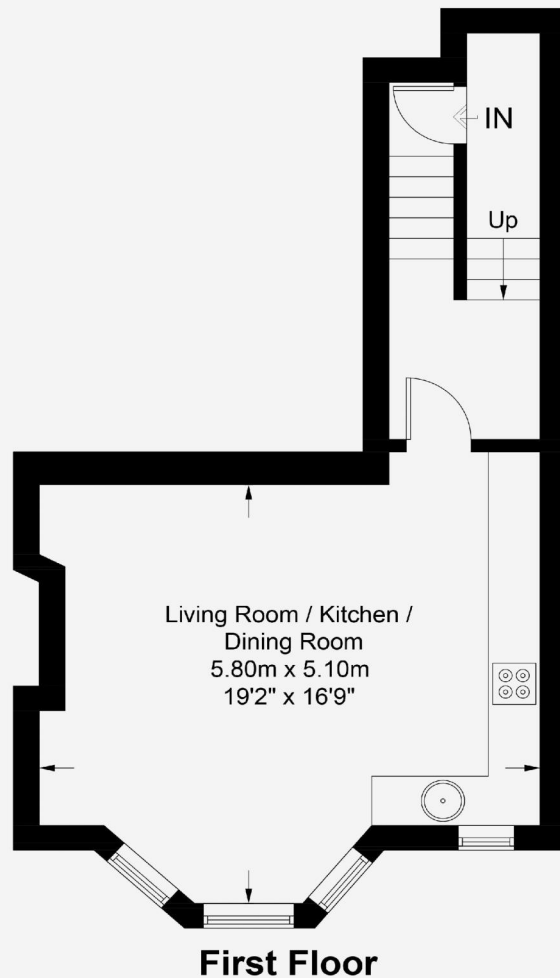
Google
★★★★★
4.9 Stars | 132 Reviews

Find us on social media

vitaproperties
 VitaProperties
 VitaProperties

Wrentham Avenue, NW10

Approximate Gross Internal Area = 1066 sq ft / 99 sq m



This plan is for layout guidance only and is not drawn to scale unless stated. All dimensions, including windows, doors, and the Total Gross Internal Area (GIA), are approximate. For precise measurements, please consult a qualified architect or surveyor before making any decisions based on this plan.



**Certified
Property
Measurer**