




Mondrian House, Kidderpore Avenue, London NW3 | £575,000


- New Build With Porter
- Spacious Hallway With Ample Storage
- Large Double Bedroom With Fitted Wardrobes "Balcony"
- Beautiful Kitchen With Integrated Appliances
- Dual Aspect Reception With 42ft Balcony/Terrace
- Superb Location, close to All Public Transport


"Vita Properties have been tremendously helpful throughout the process of securing/renting my flat. Informative about the property, prompt communication, easy to use dashboard for sharing of information, and pleasant to work with. Highly recommend!"


A beautifully created one bedroom apartment offering 670sq ft with an amazing circa 42ft Balcony found on the first floor of Mondrian House, recently built forming part of the luxurious development, with substantial landscaped communal gardens, lift and concierge. The apartment features an excellent 19ft reception room (View over the communal gardens) with modern open plan kitchen with an array of units, large utility room, double bedroom with fitted wardrobes and door leading out to balcony, bathroom with vanity unit, large storage room.


Hampstead village & West Hampstead's cafés and restaurants are a short distance along with the open spaces and outdoor activities of Hampstead Heath. There are plenty of transport links to include bus routes, Underground station (Jubilee, Metropolitan Lines, London Overground).
(Secure parking by separate Negotiations).

 Flat

 Leasehold

 x 1

 x 1

 x 1



"I was very impressed with Vita and their network of buyers. When the sale of my flat fell through (twice) they worked extremely hard to find new buyers in a difficult market - thank you!"



"Working with Vita properties has been a smooth experience! No complaints at all. Our letting agent, Diana has been fantastic and very helpful throughout the whole process. I would highly recommend both Vita properties and Diana."



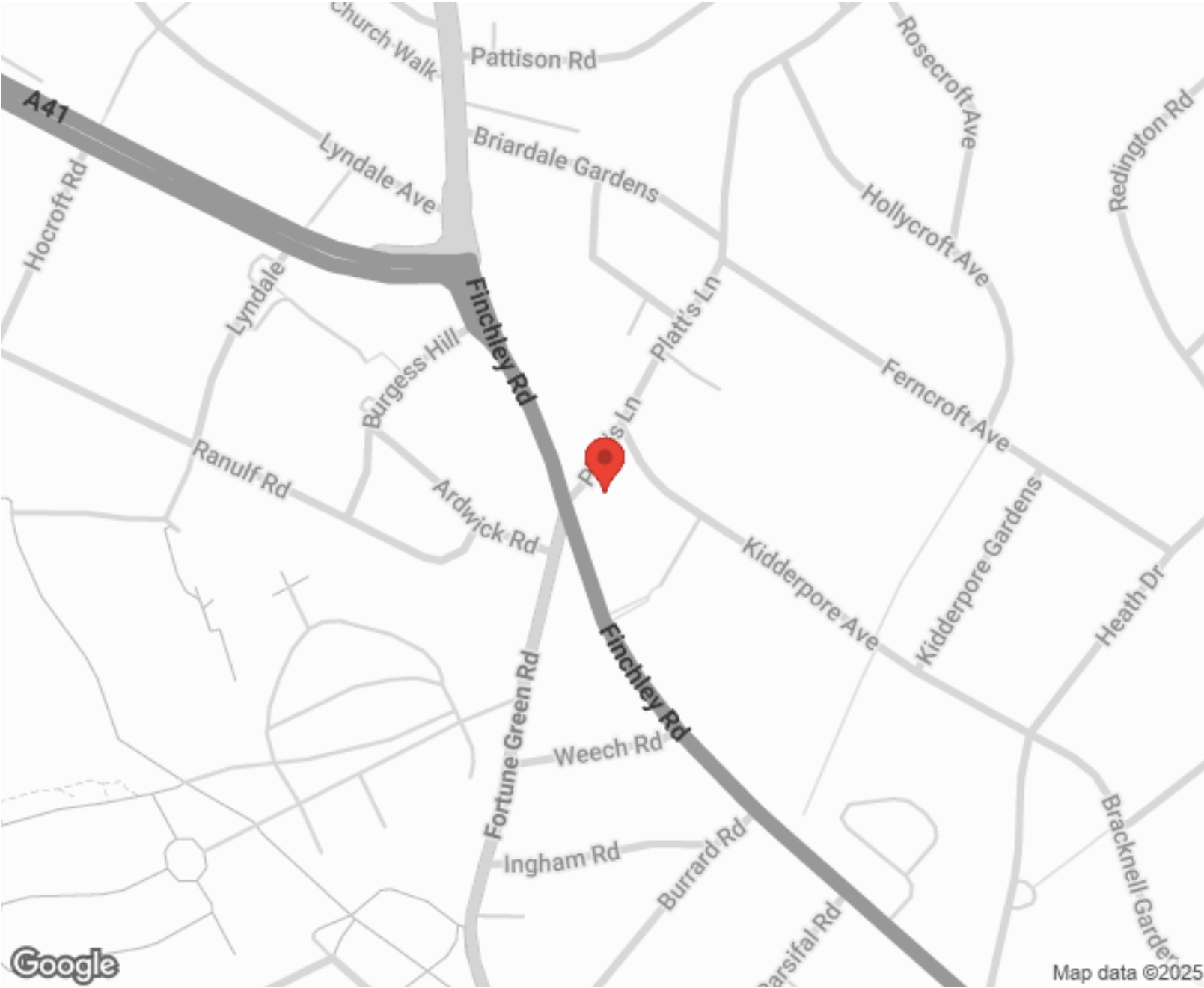
"I used Vita properties to find a flat recently and it was an overall professional, personalised and positive experience. Saira went the extra mile to accommodate to our needs and quick to help us whenever possible."



MORE INFO, PICTURES,
CONTACT ON
OUR WEBSITE



"Vita Properties is a very professional agency. My experience with them was incredible and the entire team was very helpful and kind throughout the renting process. I'd highly recommend!"



Score	Energy rating	Current	Potential
92+	A		
81-91	B	83 B	83 B
69-80	C		
55-68	D		
39-54	E		
21-38	F		
1-20	G		

SCAN FOR MORE
GOOGLE REVIEWS

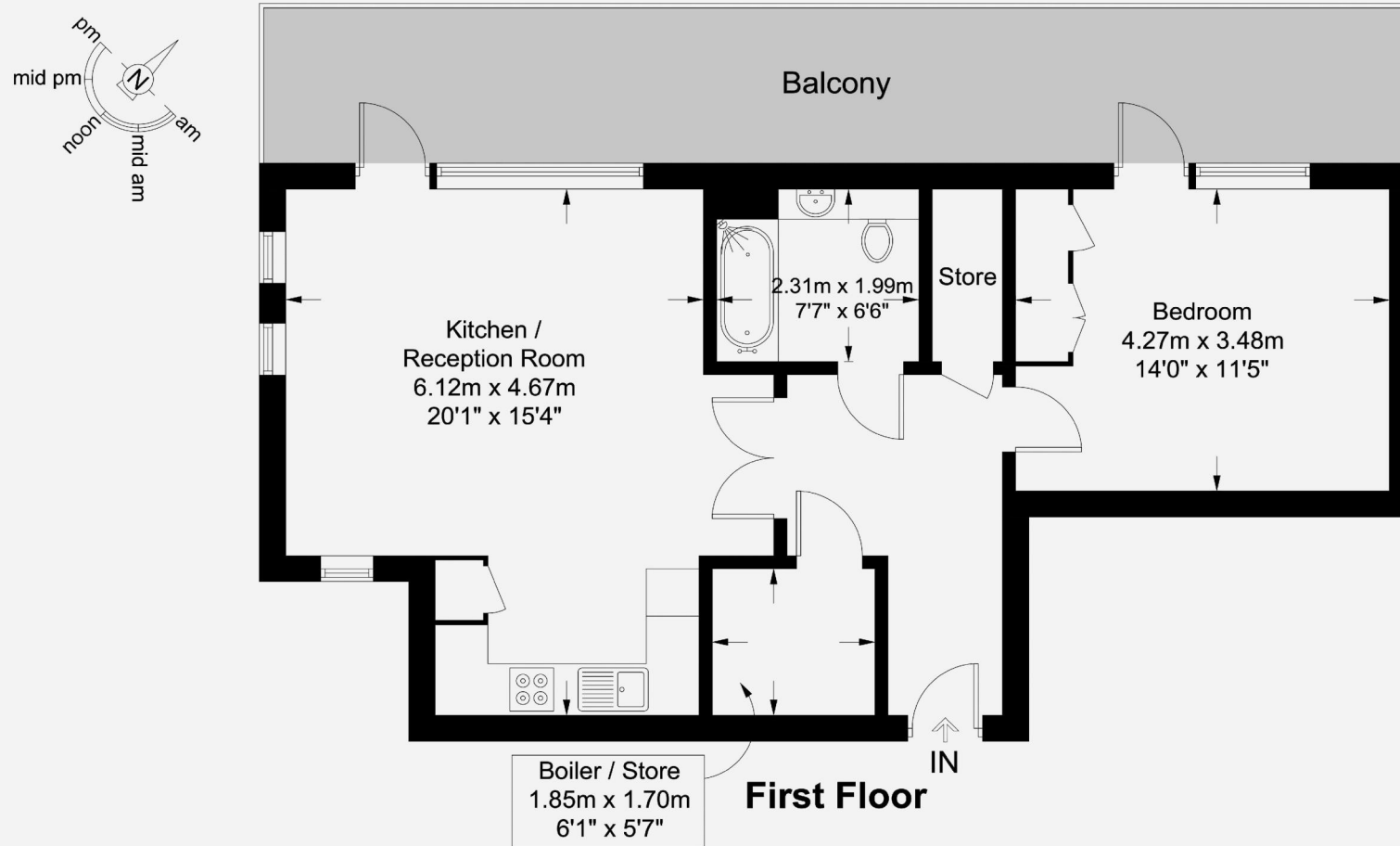
Google
★★★★★
4.9 Stars | 132 Reviews

Find us on social media

vitaproperties
 VitaProperties
 VitaProperties

Mondrian House, NW3

Approximate Gross Internal Area = 670 sq ft / 62.3 sq m



This plan is for layout guidance only and is not drawn to scale unless stated. All dimensions, including windows, doors, and the Total Gross Internal Area (GIA), are approximate. For precise measurements, please consult a qualified architect or surveyor before making any decisions based on this plan.



**Certified
Property
Measurer**