



## Avenue Mansions, Finchley Road, Hampstead, London NW3 | £880,000

- Communal Gardens
- Underground Storage
- On Site Management
- Share of Freehold

- Close to Hampstead Heath
- Passenger Lift



"Vita Properties have been tremendously helpful throughout the process of securing/renting my flat. Informative about the property, prompt communication, easy to use dashboard for sharing of information, and pleasant to work with. Highly recommend!"

---

Oozing natural light is this character filled first floor three bedroom apartment, with high ceilings throughout situated within this prestigious Mansion Block (BAM Estate). The property offers 1142 sq ft of lateral living and benefits from: A large reception room retaining many original features, separate fitted kitchen, utility room and two bathrooms. Further benefits include: Beautifully maintained landscaped communal gardens and a first class porterage/management service. The development is within walking distance to West Hampstead that offers a variety of popular shops, restaurants and coffee bars. Transportation links include West Hampstead tube station (Jubilee Line) and West Hampstead (Thames Link). Hampstead & Finchley Road transport links are also a short walk away. Viewings are highly recommended.



Jonathan Singer

✉ [jonathan.singer@vitaproperties.uk](mailto:jonathan.singer@vitaproperties.uk)  
☎ +4478 8428 6414



🏠 Flat

🔑 Share of Freehold

🛏 x 3

🚿 x 1

🚶 x 2

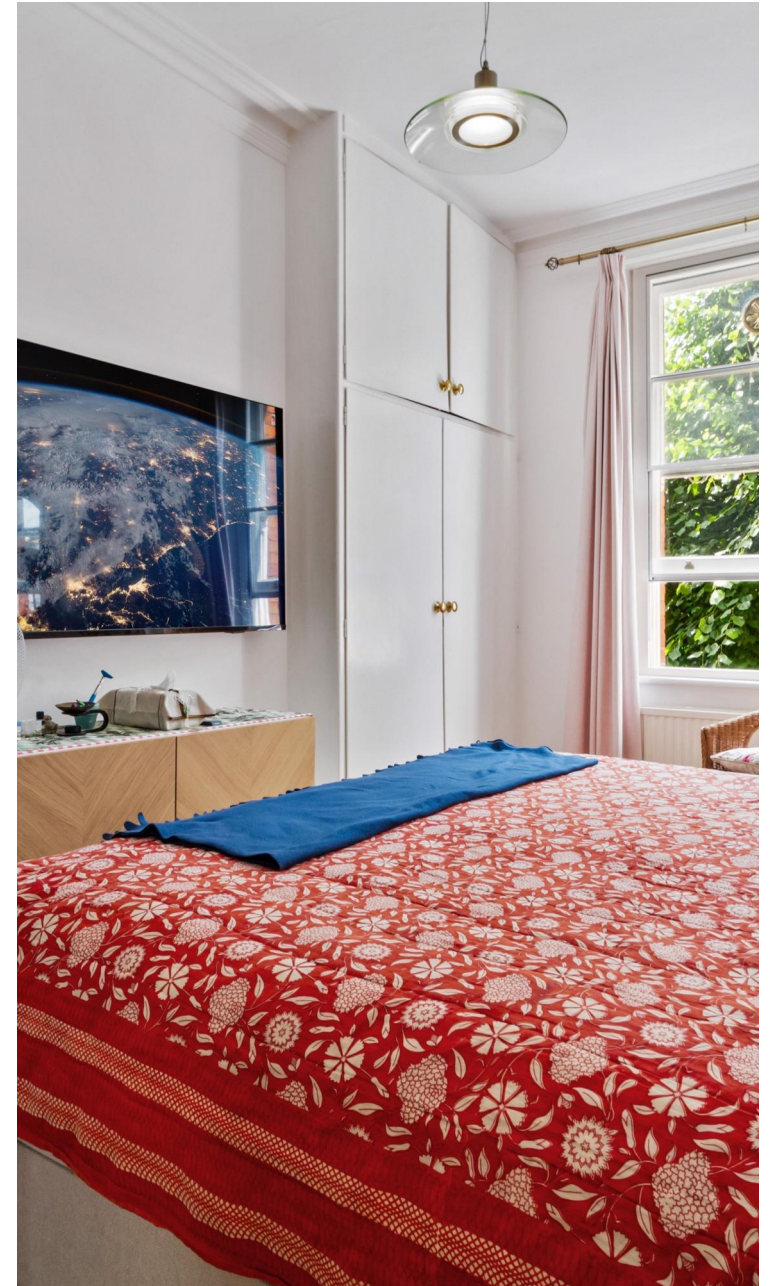
SCAN FOR  
A VIDEO  
WALKTHROUGH





"I was very impressed with Vita and their network of buyers. When the sale of my flat fell through (twice) they worked extremely hard to find new buyers in a difficult market - thank you!"

---





"Working with Vita properties has been a smooth experience! No complaints at all. Our letting agent, Diana has been fantastic and very helpful throughout the whole process. I would highly recommend both Vita properties and Diana."

---





"I used Vita properties to find a flat recently and it was an overall professional, personalised and positive experience. Saira went the extra mile to accommodate to our needs and quick to help us whenever possible."

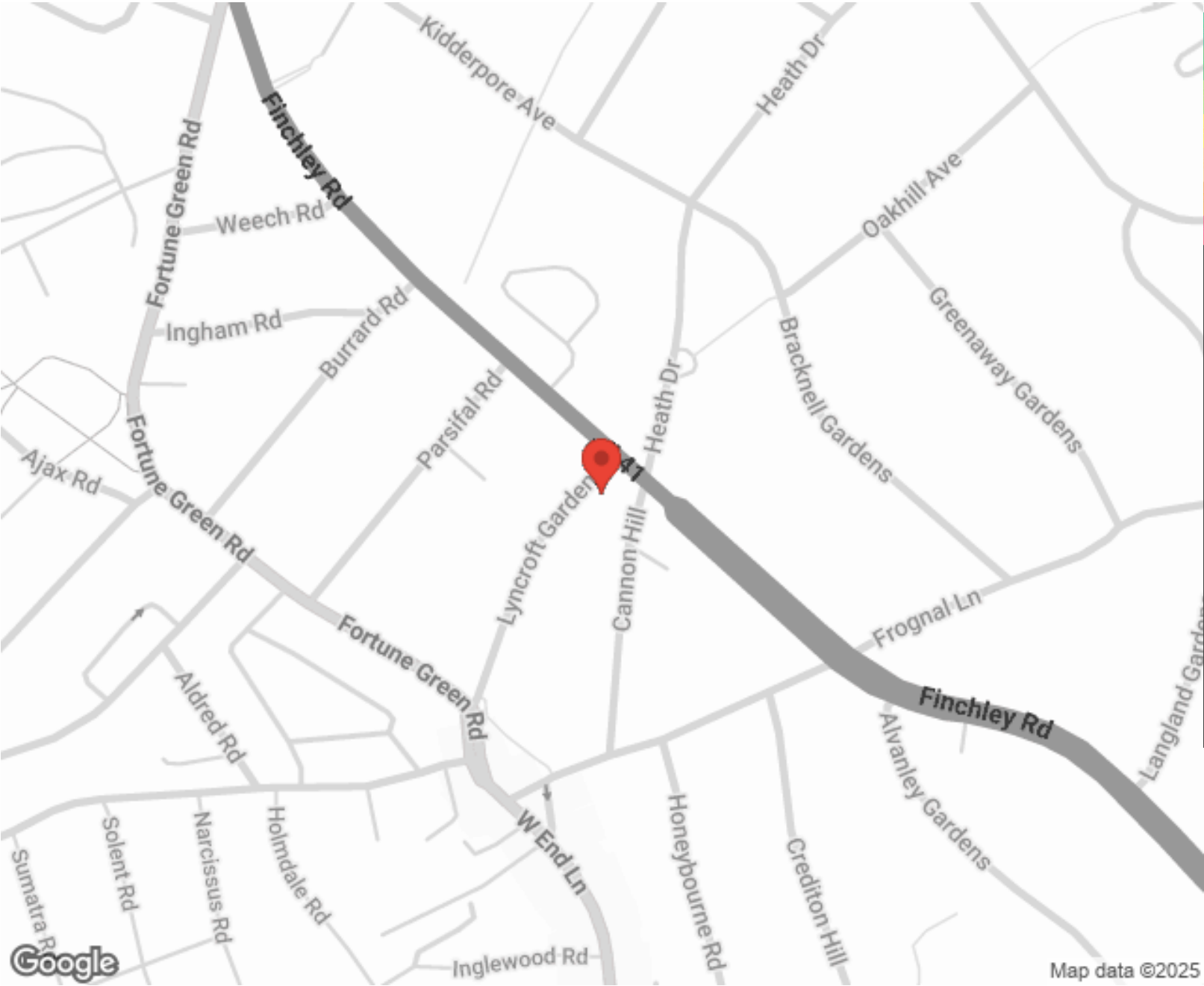
---



MORE INFO, PICTURES,  
CONTACT ON  
OUR WEBSITE



"Vita Properties is a very professional agency. My experience with them was incredible and the entire team was very helpful and kind throughout the renting process. I'd highly recommend!"



Score	Energy rating	Current	Potential
92+	A		
81-91	B		82 B
69-80	C	72 C	
55-68	D		
39-54	E		
21-38	F		
1-20	G		

SCAN FOR MORE  
GOOGLE REVIEWS



Google



4.9 Stars | 132 Reviews

Find us on social media



vitaproperties



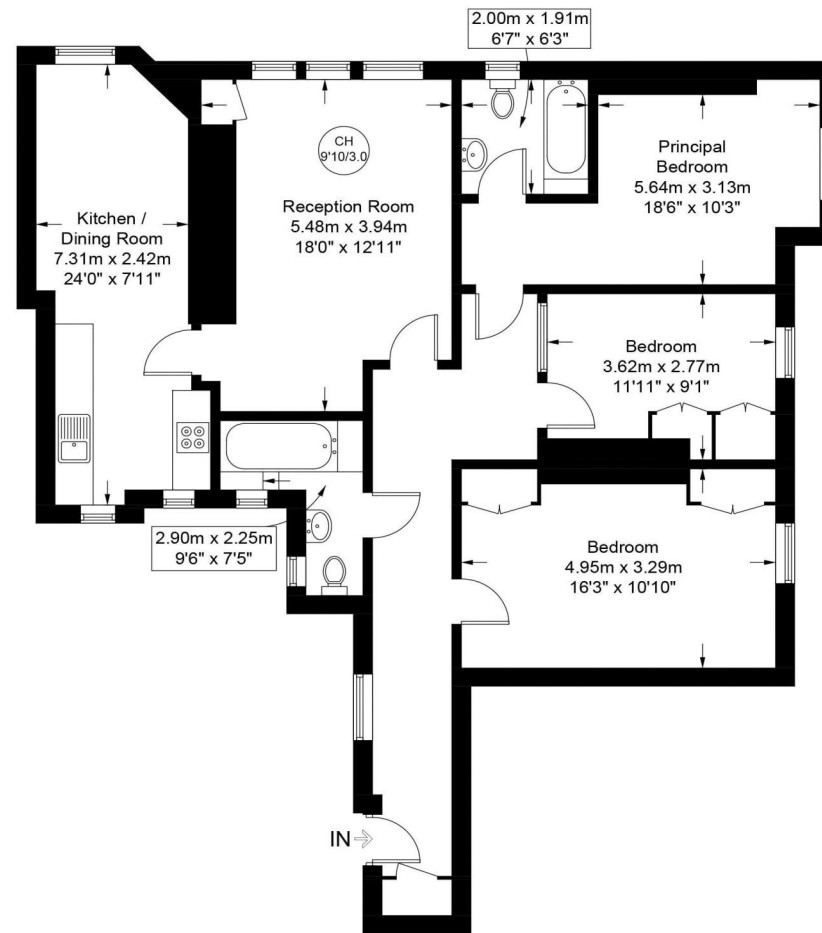
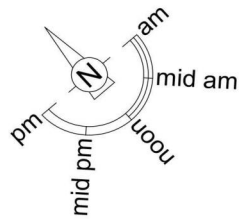
VitaProperties



VitaProperties

## Avenue Mansions, NW3

**Approximate Gross Internal Area = 1142 sq ft / 106.1 sq m**



**First Floor**

This plan is for layout guidance only and is not drawn to scale unless stated. All dimensions, including windows, doors, and the Total Gross Internal Area (GIA), are approximate. For precise measurements, please consult a qualified architect or surveyor before making any decisions based on this plan.



**Certified  
Property  
Measurer**