



Melrose Avenue, Willesden Green, London NW2 | £750,000

- Interior designed home
- 3 bedrooms, 2 bathrooms
- Private garden
- 1st floor of a pretty end of terrace property

- Sought after road in Willesden Green
- Turnkey home

"Vita Properties have been tremendously helpful throughout the process of securing/renting my flat. Informative about the property, prompt communication, easy to use dashboard for sharing of information, and pleasant to work with. Highly recommend!"

Kate Brookfield x Vita Properties offer as sole agent, this interior designed three bedroom apartment with private garden, in Willesden Green NW2.

Situated on the highly sought after Melrose Avenue, the apartment is found on the first floor of a beautifully presented end of terrace Victorian property with an extremely attractive frontage and neatly arranged and securely gated side access to the rear garden. The apartment shares the main front door and communal area with one property below, and was fully renovated and reconfigured by the current owners in 2020.

With entrance at ground floor level, an internal staircase leads you to the first floor with natural light flooding in from strategically positioned sky lights to emphasise the impressive ceiling height. Decor throughout the apartment is a pleasing and sophisticated scheme of Farrow & Ball colours, with the woodwork and doors as the standout feature in 'railings'. To the front, a generous open plan living area perfect for entertaining. Bespoke alcove shelving offers soft

s to the sitting area. The large bay window commands the perfect dining space and a beautiful shaker style kitchen is neatly arranged to the opposite side of the room with butler sink, integrated appliances, antique brass taps and a clever movable island, allowing the overall space to offer maximum versatility.

The principal bedroom sits to the rear of the apartment, with panelled walls, hung bedside pendants, excellent storage and a stylish en suite shower room accessed via a hung sliding door. Two further bedrooms and beautiful family bathroom complete the home. A wonderful private garden is accessed via the side of the building and is peaceful setting with mature trees and planted beds.

Melrose Avenue is an extremely pret

- 🏠 Flat
- 🔑 Leasehold
- 🛏 x 3
- 🛋 x 1
- 🚿 x 2



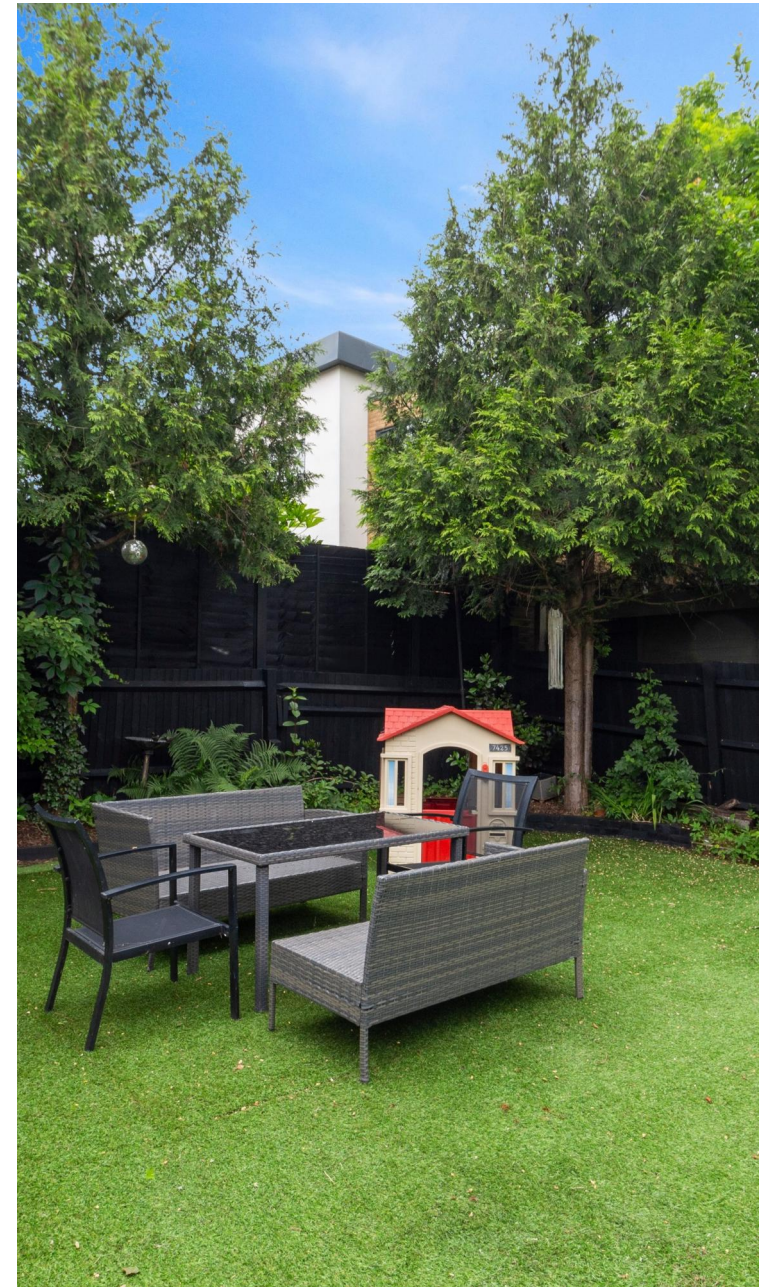
Kate Brookfield

✉ Kate.brookfield@vitaproperties.uk
☎ +4478 1365 5431



lighting and creates a c

"I was very impressed with Vita and their network of buyers. When the sale of my flat fell through (twice) they worked extremely hard to find new buyers in a difficult market - thank you!"



"Working with Vita properties has been a smooth experience! No complaints at all. Our letting agent, Diana has been fantastic and very helpful throughout the whole process. I would highly recommend both Vita properties and Diana."



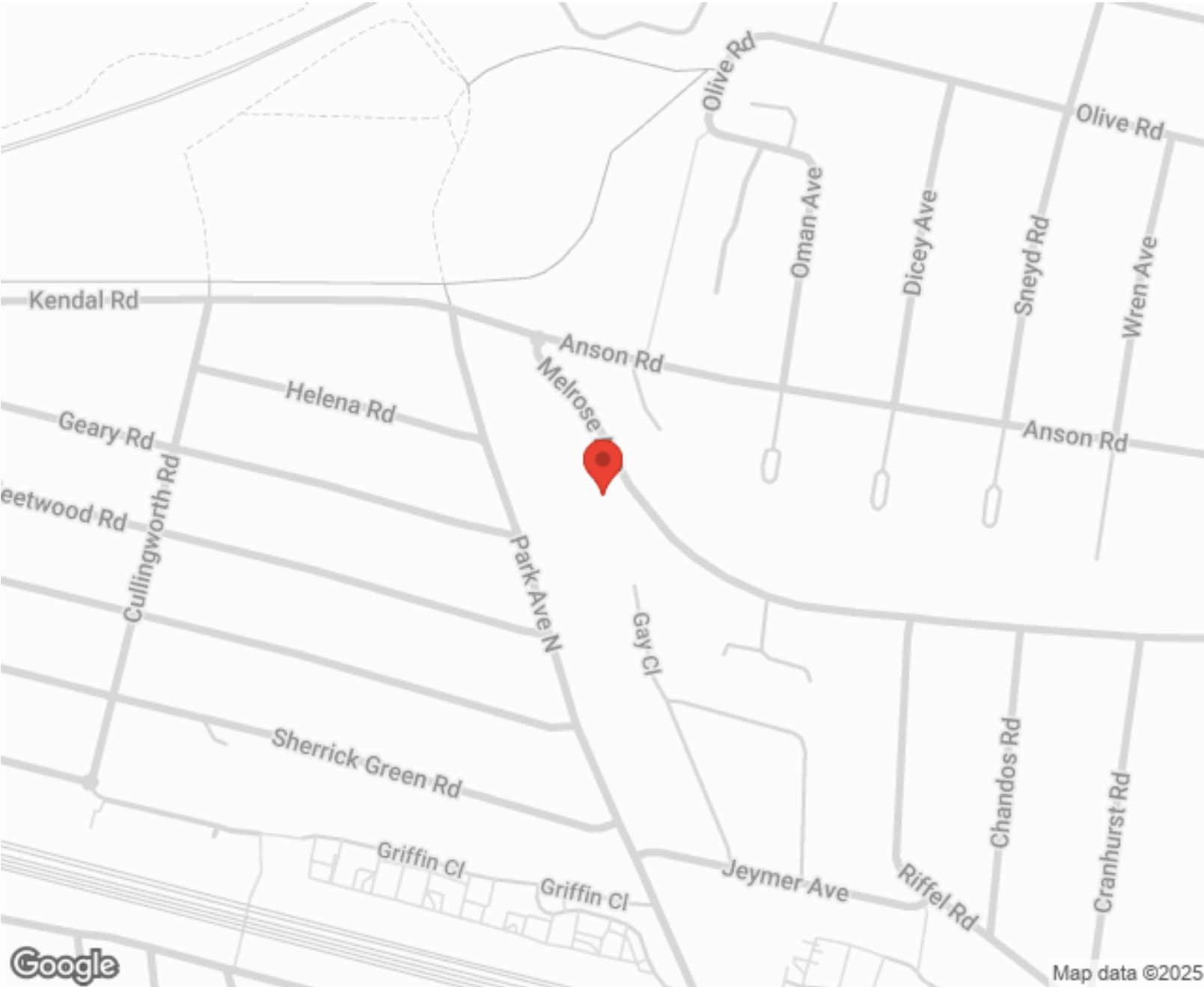
"I used Vita properties to find a flat recently and it was an overall professional, personalised and positive experience. Saira went the extra mile to accommodate to our needs and quick to help us whenever possible."



MORE INFO, PICTURES,
CONTACT ON
OUR WEBSITE



"Vita Properties is a very professional agency. My experience with them was incredible and the entire team was very helpful and kind throughout the renting process. I'd highly recommend!"



Score	Energy rating	Current	Potential
92+	A		
81-91	B		
69-80	C		79 C
55-68	D	68 D	
39-54	E		
21-38	F		
1-20	G		

SCAN FOR MORE
GOOGLE REVIEWS

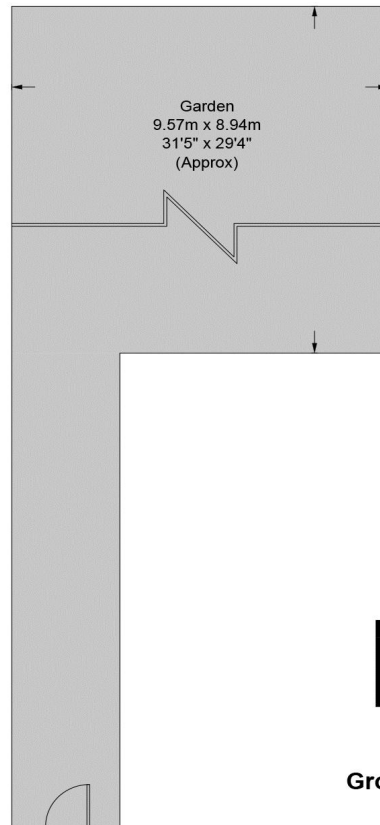
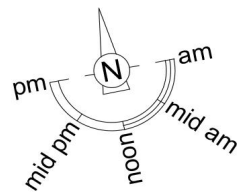
Google
★★★★★
4.9 Stars | 132 Reviews

Find us on social media

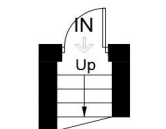
vitaproperties
 VitaProperties
 VitaProperties

Melrose Avenue, NW2

Approximate Gross Internal Area = 919 sq ft / 85.4 sq m

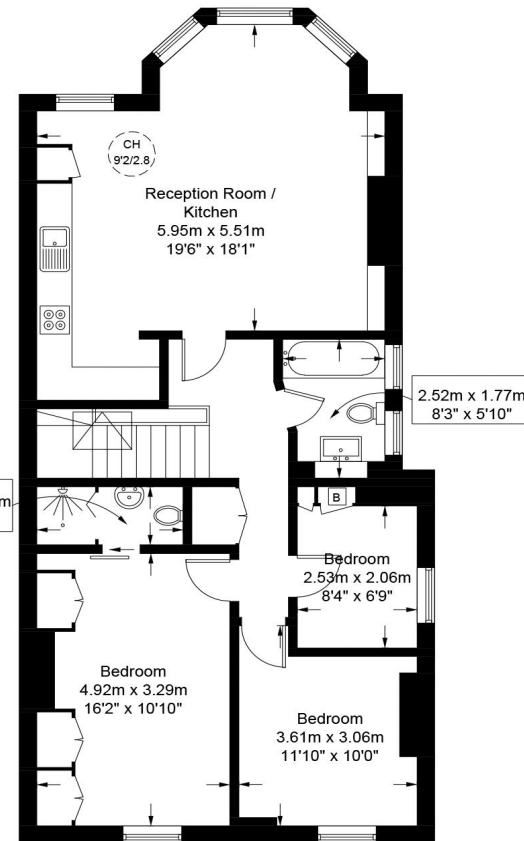


IN
Ground Floor



Ground Floor

2.49m x 1.08m
8'2" x 3'7"



First Floor

This plan is for layout guidance only and is not drawn to scale unless stated. All dimensions, including windows, doors, and the Total Gross Internal Area (GIA), are approximate. For precise measurements, please consult a qualified architect or surveyor before making any decisions based on this plan.



Certified
Property
Measurer