



Coverdale Road, Brondesbury Park, London NW2 .| £1,195,000

- New Build
- Communal Garden
- Balcony
- Parks Nearby

- Fantastic Transport Links
- 10 year New Build Warranty

"Vita Properties have been tremendously helpful throughout the process of securing/renting my flat. Informative about the property, prompt communication, easy to use dashboard for sharing of information, and pleasant to work with. Highly recommend!"

Welcome to The Royal Majestic Apartments, a collection of 16 stylish one, two and three bedroom properties, brought to you by Gage Properties. These modern apartments are now complete and ready to move into and feature high specification interiors, private terraces and parking for selected units. Located right in the heart of NW6, these apartments are tucked away on a quiet street on the corner of Willesden Lane and Coverdale Road. You will be just a short walk away from both excellent transport connections and a wide choice of local amenities. The apartments all have real oak-engineered floors throughout, integrated lighting and bespoke joinery. With private terraces and professionally landscaped grounds, The Royal Majestic Apartments maintain the balance between the privacy of a home and an exclusive sense of community. Interiors have been individually designed by boutique agency ADEMCHIC, ensuring each home is turnkey ready for you. With sophisticated finishes, high quality specification and thoughtful layouts, The Royal Majestic Apartments truly live up to their name.

Inside, you will find beautifully designed spaces – some designated for quiet, peaceful moments and others for socialising and entertaining guests.

The Royal Majestic Apartments, Brondsebury, NW6 offer excellent transport links, making them an ideal choice if you want to be within easy reach of central London and the City. Willesden Green or Kilburn are the nearest stations for the Jubilee Line. If you are travelling abroad, Heathrow Airport is a 45-minute drive by car.

-  Flat
-  Unknown
-  x 3
-  x 1
-  x 2

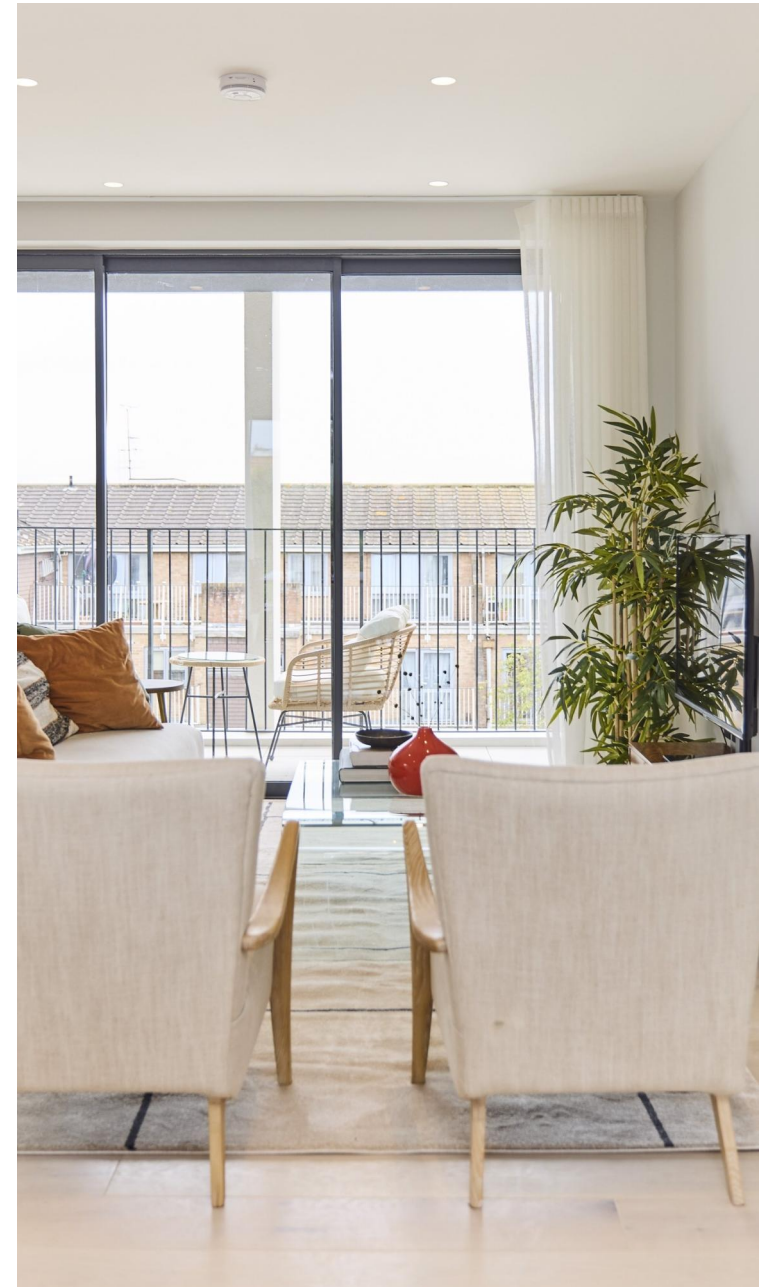


Oliver Kent

 oliver.kent@vitaproperties.uk
 +4477 7274 0351



"I was very impressed with Vita and their network of buyers. When the sale of my flat fell through (twice) they worked extremely hard to find new buyers in a difficult market - thank you!"



"Working with Vita properties has been a smooth experience! No complaints at all. Our letting agent, Diana has been fantastic and very helpful throughout the whole process. I would highly recommend both Vita properties and Diana."



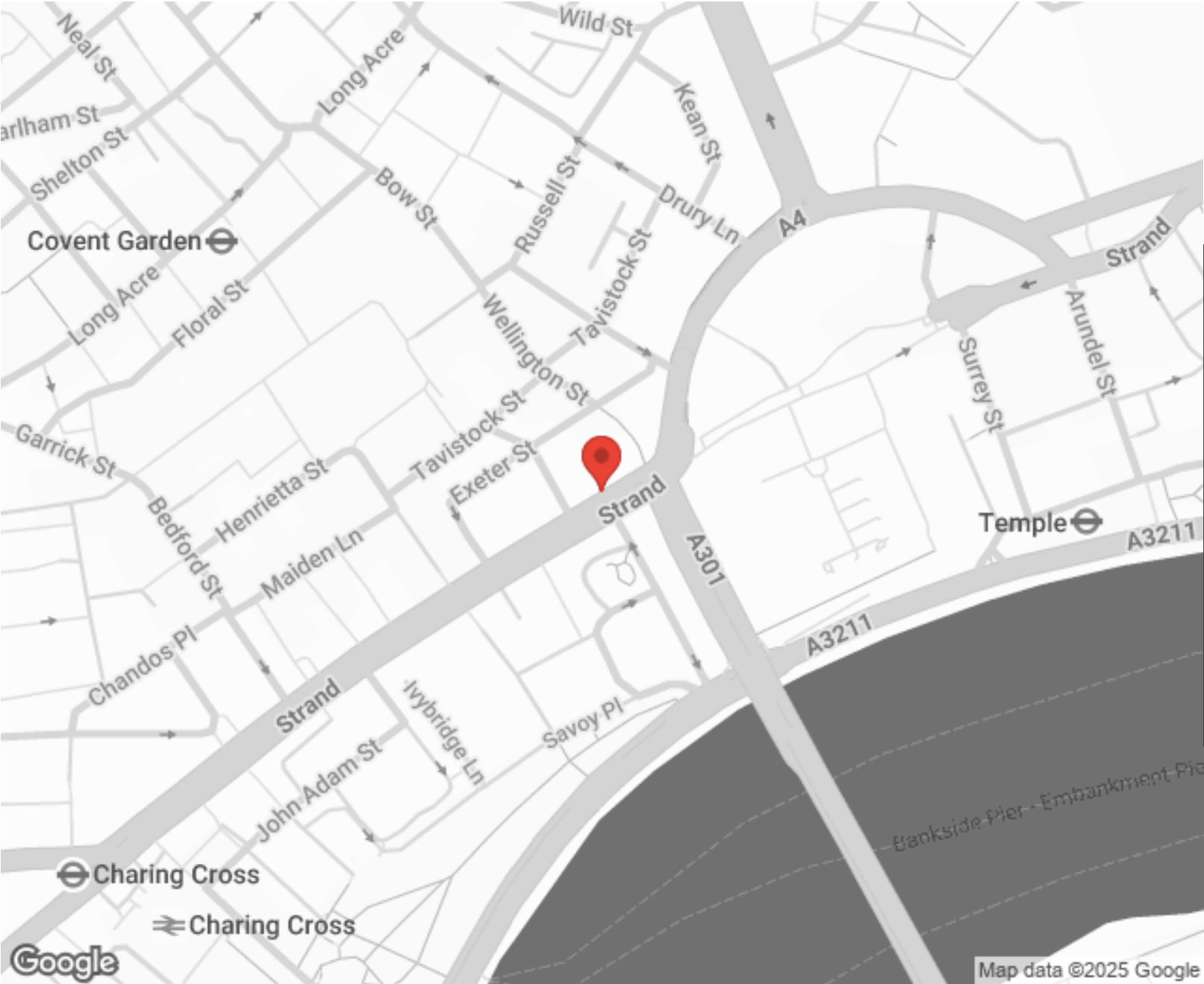
"I used Vita properties to find a flat recently and it was an overall professional, personalised and positive experience. Saira went the extra mile to accommodate to our needs and quick to help us whenever possible."



MORE INFO, PICTURES,
CONTACT ON
OUR WEBSITE



"Vita Properties is a very professional agency. My experience with them was incredible and the entire team was very helpful and kind throughout the renting process. I'd highly recommend!"



Score	Energy rating	Current	Potential
92+	A		
81-91	B	81 B	81 B
69-80	C		
55-68	D		
39-54	E		
21-38	F		
1-20	G		

SCAN FOR MORE
GOOGLE REVIEWS

Google
★★★★★
4.9 Stars | 132 Reviews

Find us on social media

vitaproperties

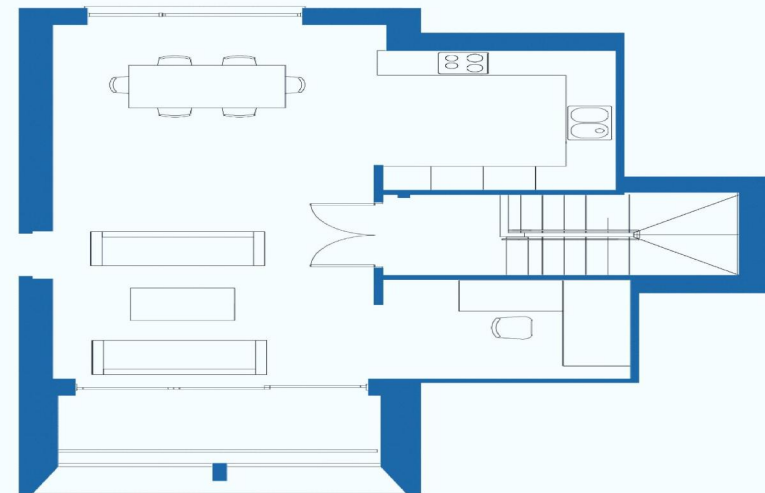
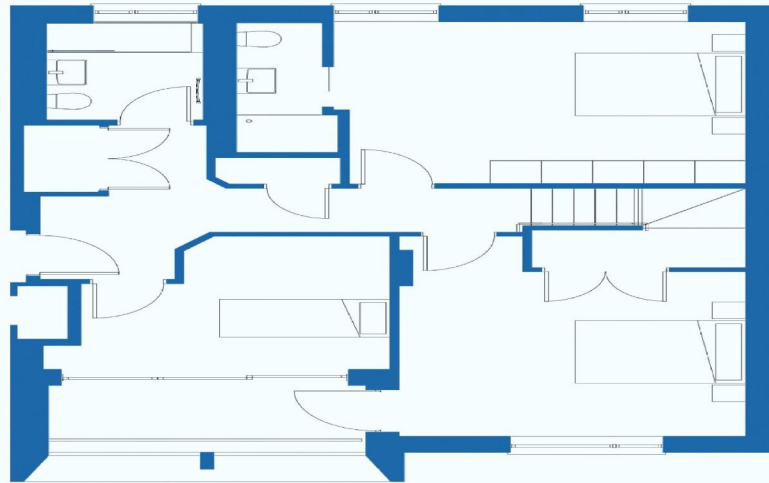
VitaProperties

VitaProperties



FLAT 4

FIRST & SECOND FLOOR
3 BEDROOM



GROSS INTERNAL AREA
130 sqm / 1401 sqft

KITCHEN / LIVING

8.3m x 6.5m / 27.3ft x 21.3ft

BATHROOM

2.3m x 1.9m / 7.6ft x 6.2ft

BEDROOM 1

3.9m x 4.9m / 12.7ft x 15.9ft

ENSUITE

2.2m x 1.2m / 7.2ft x 4.0ft

BEDROOM 2

4.1m x 3.9m / 13.3ft x 12.9ft

BEDROOM 3

3.6m x 3.1m / 11.9ft x 10.4ft

TERRACE / BALCONY 01

3.8m x 1.3m / 12.4ft x 4.3ft

TERRACE / BALCONY 02

3.8m x 1.3m / 12.4ft x 4.3ft

