



Buckland Crescent, Belsize Park, London NW3 .| £1,000,000

- Reception room opening onto a roof terrace
- Recently Renovated
- Wooden floors
- Chain Free

- 2 Bathrooms
- Leasehold

"Vita Properties have been tremendously helpful throughout the process of securing/renting my flat. Informative about the property, prompt communication, easy to use dashboard for sharing of information, and pleasant to work with. Highly recommend!"

This well proportioned and elegant 3 bedroom flat set within an elegant conversion boasts a delightful reception room with French doors opening onto a roof terrace and a bright kitchen.


Buckland Crescent is a sought-after residential street within easy reach of the charming shops and cafés of Belsize Village.




Saira Ishfaq


✉ [saira@vitaproperties.uk](mailto:saira@vitaproperties.uk)  
☎ +4475 5575 4510





 Flat



Leasehold

 x 3

 x 1

 x 2



"I was very impressed with Vita and their network of buyers. When the sale of my flat fell through (twice) they worked extremely hard to find new buyers in a difficult market - thank you!"

---





"Working with Vita properties has been a smooth experience! No complaints at all. Our letting agent, Diana has been fantastic and very helpful throughout the whole process. I would highly recommend both Vita properties and Diana."

---





"I used Vita properties to find a flat recently and it was an overall professional, personalised and positive experience. Saira went the extra mile to accommodate to our needs and quick to help us whenever possible."

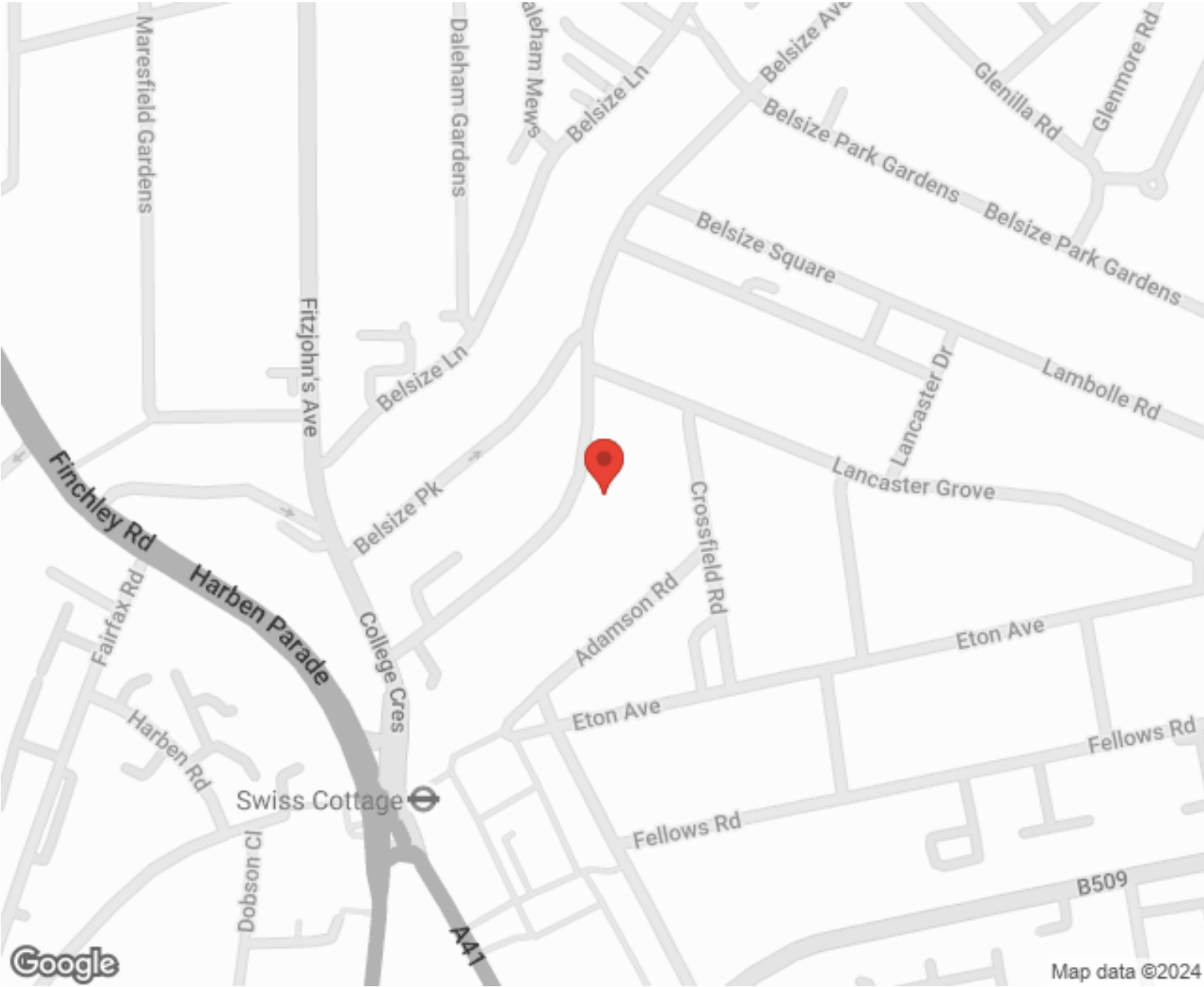
---



**MORE INFO, PICTURES,  
CONTACT ON  
OUR WEBSITE**



"Vita Properties is a very professional agency. My experience with them was incredible and the entire team was very helpful and kind throughout the renting process. I'd highly recommend!"



Score	Energy rating	Current	Potential
92+	A		
81-91	B		
69-80	C	71 C	75 C
55-68	D		
39-54	E		
21-38	F		
1-20	G		

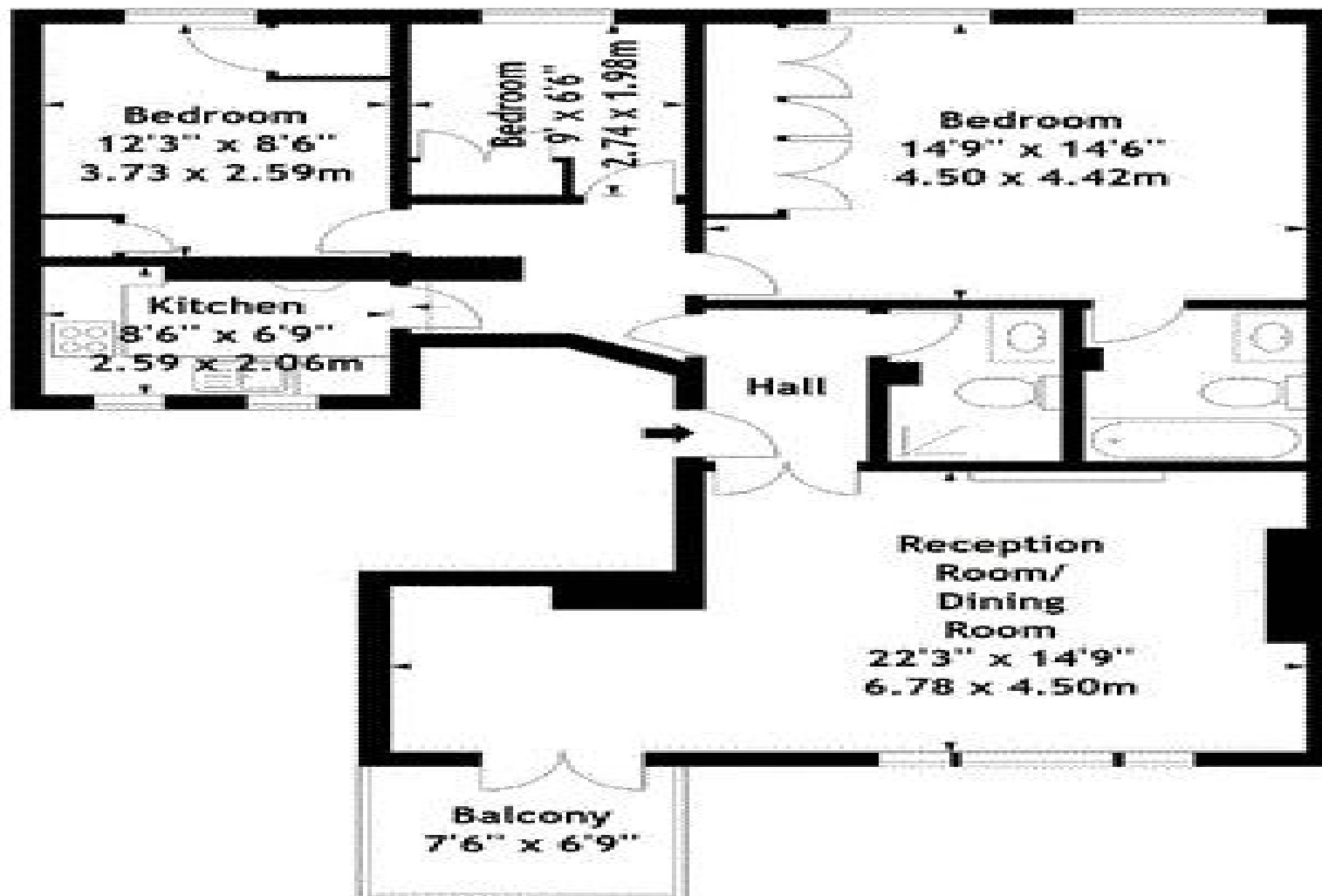
SCAN FOR MORE  
GOOGLE REVIEWS

Google  
★★★★★  
4.9 Stars | 132 Reviews

Find us on social media

vitaproperties  
 VitaProperties  
 VitaProperties

Approx. Gross Internal Area  
927 Sq Ft - 86.12 Sq M



First Floor

Measured in accordance with RICS guidelines. Every attempt is made to ensure accuracy, however all measurements are approximate. This floor plan is for illustrative purposes only and is not to scale.  
© Datagraphy Ltd 2014  
Photographs \* Floorplans \* Virtual Tours  
Tel: 0845 643 4401 [www.datagraphy.com](http://www.datagraphy.com)