



Waverley Court, 41-43 Steeles Road, Belsize Park, London, NW3 | £879,950

- Modern Turnkey
- Purpose Built Block
- Ideal Location Close to Transport
- Two Bedrooms

- Two Bathrooms
- Spacious Open-Plan Reception
- Private Balcony & Communal Gardens

"Vita Properties have been tremendously helpful throughout the process of securing/renting my flat. Informative about the property, prompt communication, easy to use dashboard for sharing of information, and pleasant to work with. Highly recommend!"

Located in the heart of Belsize Park, this purpose built block – Waverley Court is in the ideal position between three train stations (Northern Line & Jubilee) and moments from the fashionable Primrose Hill.

This luxury two bedroom, two bathroom apartment is set out over 872 sq.ft (81 sq.m) and boasts bright open-plan living. The apartment benefits from contemporary fixtures and fittings, gas central heating & double glazing.

Other benefits include being on the ground floor with no stair access, a private terrace, stunning communal gardens and available chain free.



Jonathan Singer

✉ jonathan.singer@vitaproperties.uk
☎ +4478 8428 6414

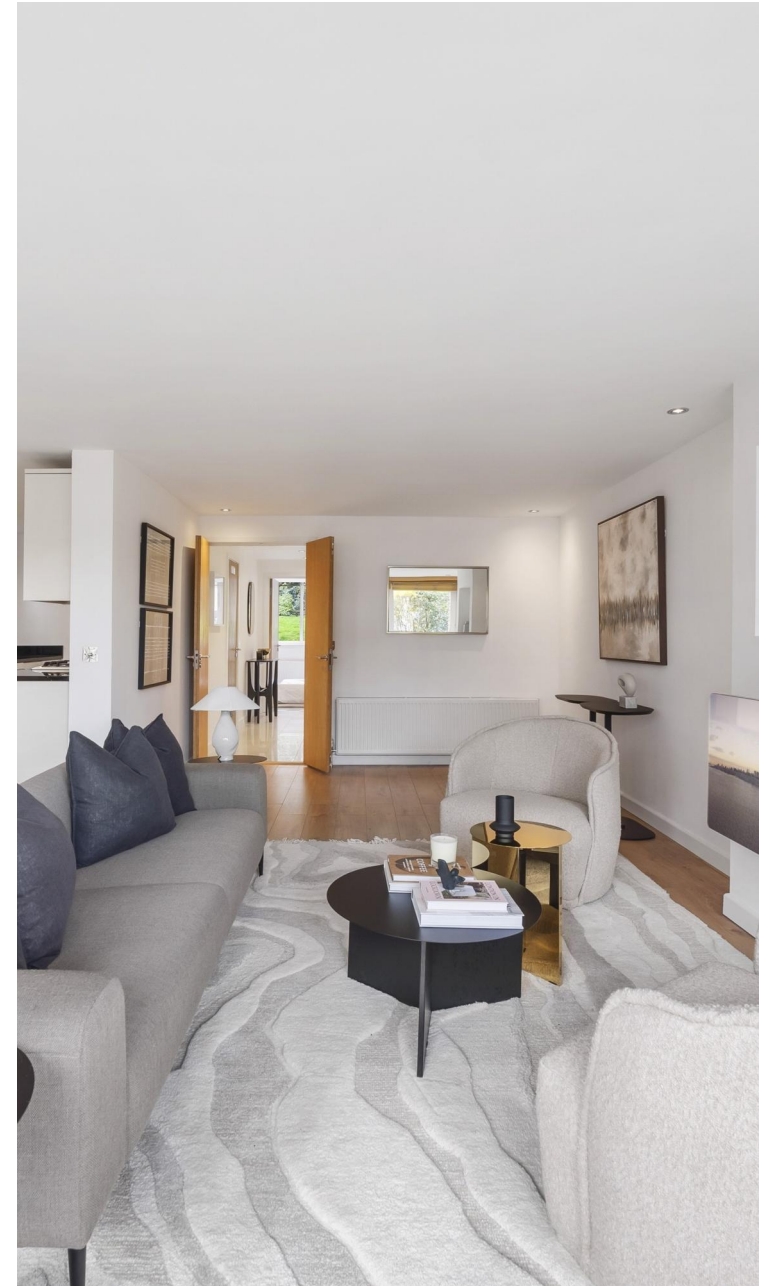


- 🏠 Flat
- 🔑 Leasehold
- 🛏 x 2
- 🚿 x 1
- 🚗 x 2

SCAN FOR
A VIDEO
WALKTHROUGH



"I was very impressed with Vita and their network of buyers. When the sale of my flat fell through (twice) they worked extremely hard to find new buyers in a difficult market - thank you!"



"Working with Vita properties has been a smooth experience! No complaints at all. Our letting agent, Diana has been fantastic and very helpful throughout the whole process. I would highly recommend both Vita properties and Diana."



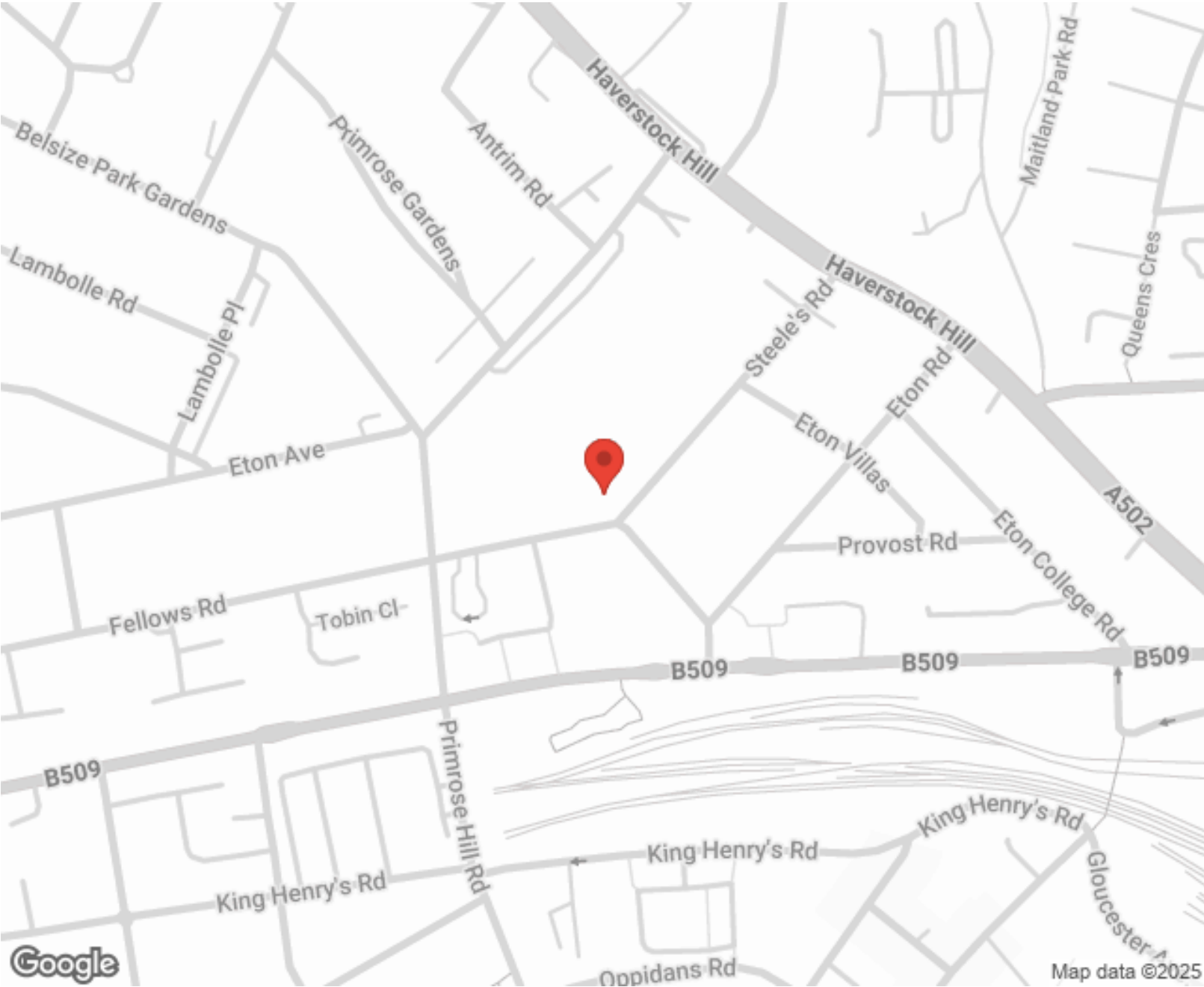
"I used Vita properties to find a flat recently and it was an overall professional, personalised and positive experience. Saira went the extra mile to accommodate to our needs and quick to help us whenever possible."



MORE INFO, PICTURES,
CONTACT ON
OUR WEBSITE



"Vita Properties is a very professional agency. My experience with them was incredible and the entire team was very helpful and kind throughout the renting process. I'd highly recommend!"



Score	Energy rating	Current	Potential
92+	A		
81-91	B		
69-80	C	69 c	75 c
55-68	D		
39-54	E		
21-38	F		
1-20	G		

SCAN FOR MORE
GOOGLE REVIEWS

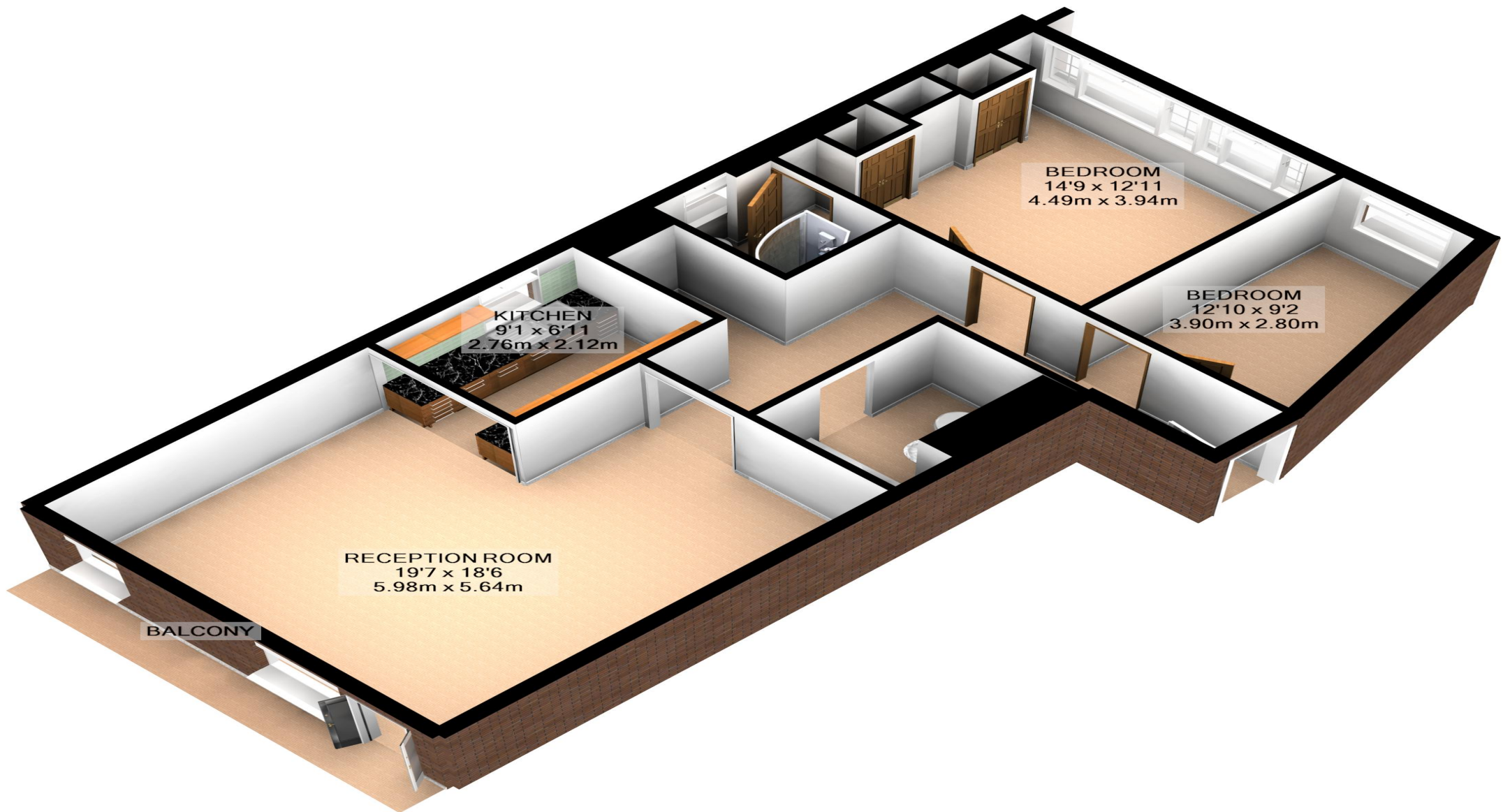
Google
★★★★★
4.9 Stars | 132 Reviews

Find us on social media

vitaproperties

VitaProperties

VitaProperties



Total Approx. Floor Area 872 Sq.Ft. (81.0 Sq.M.)

KeyAGENT LTD Floor Plans are produced and provided for illustration purposes only. Whilst every attempt has been made to ensure the plan is accurate and presents the property in the best way, measurements of doors, windows and rooms are approximate and no responsibility is taken for any error, omission or mis-statement. To find out more about KeyAGENT please visit www.keyagent.co.uk
(Tel: 0845 475 4165)
Made with Metropix ©2012