



Fortune Green Road, West Hampstead, London NW6 .| £1,450,000

- Stunning Roof Terrace
- Air Conditioning
- Share of Freehold
- Brand New Appliances and Boiler

- Underfloor Heating in Kitchens and Bathrooms
- Beautifully Presented

"Vita Properties have been tremendously helpful throughout the process of securing/renting my flat. Informative about the property, prompt communication, easy to use dashboard for sharing of information, and pleasant to work with. Highly recommend!"

Presenting an exquisite five-bedroom, four-bathroom apartment, Vita Properties takes immense pride in showcasing this immaculately maintained residence. Boasting two well-appointed kitchens, two balconies, and ample storage space, this remarkable property spans over an impressive 2500 sqft. The living room exudes spaciousness and is thoughtfully designed with integrated storage solutions and a contemporary fireplace. Sunlight streams through the timeless arched windows, leading to a charming wrought-iron balcony with verdant views. The stainless steel eat-in kitchen is a modern culinary haven, complete with top-tier appliances. The expansive master bedroom features its own balcony, while the second double bedroom and a third, smaller bedroom/office space offer versatility and ample built-in storage. Additional highlights include a practical store closet, separate shower room, and a luxurious aqua bathroom with sleek design elements. The pinnacle of this already impressive property lies in the fully renovated top-floor attic, transformed into additional living space.

This section comprises a living room, kitchen with elegant marble worktops, two generously sized bedrooms (one with an ensuite and a separate makeup area), and a dedicated shower room for bedroom two. Abundant skylights and a private balcony flood the space with natural light. Situated atop a magnificent mansion block in West Hampstead, on a tranquil street surrounded by esteemed schools, green spaces, and a wealth of amenities, this property is truly exceptional. Conveniently, Tesco Express, a gym, playground, local coffee shops, and an outstanding nursery are all within immediate reach. West Hampstead Thameslink, Overground, and Tube station are a mere 0.5-0.7 miles away, ensuring seamless connectivity.

🏠 Flat
🔑 Share of
Freehold
🛏 x 5
🚿 x 2
🚿 x 4

SCAN FOR
A VIDEO
WALKTHROUGH

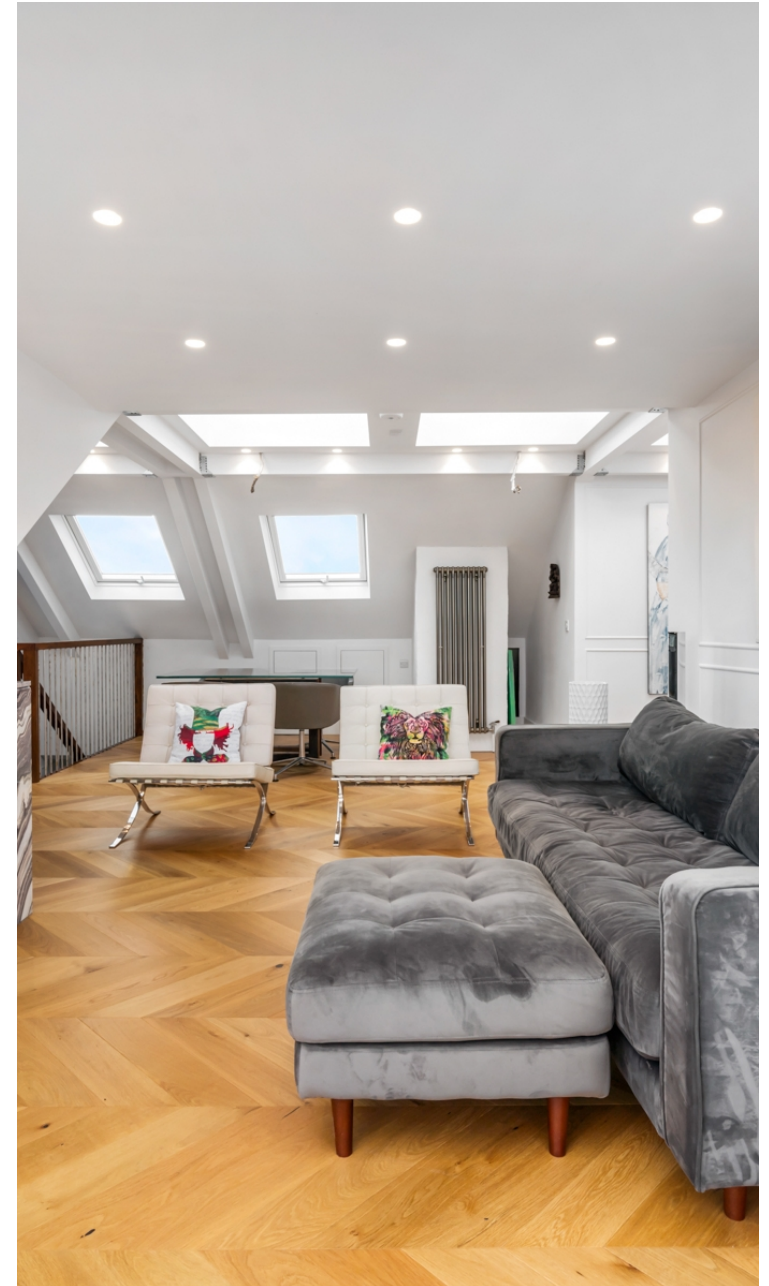


Nouri Alexander

✉️ nouri.alexander@vitaproperties.uk
☎️ +4475 8405 1289



"I was very impressed with Vita and their network of buyers. When the sale of my flat fell through (twice) they worked extremely hard to find new buyers in a difficult market - thank you!"



"Working with Vita properties has been a smooth experience! No complaints at all. Our letting agent, Diana has been fantastic and very helpful throughout the whole process. I would highly recommend both Vita properties and Diana."



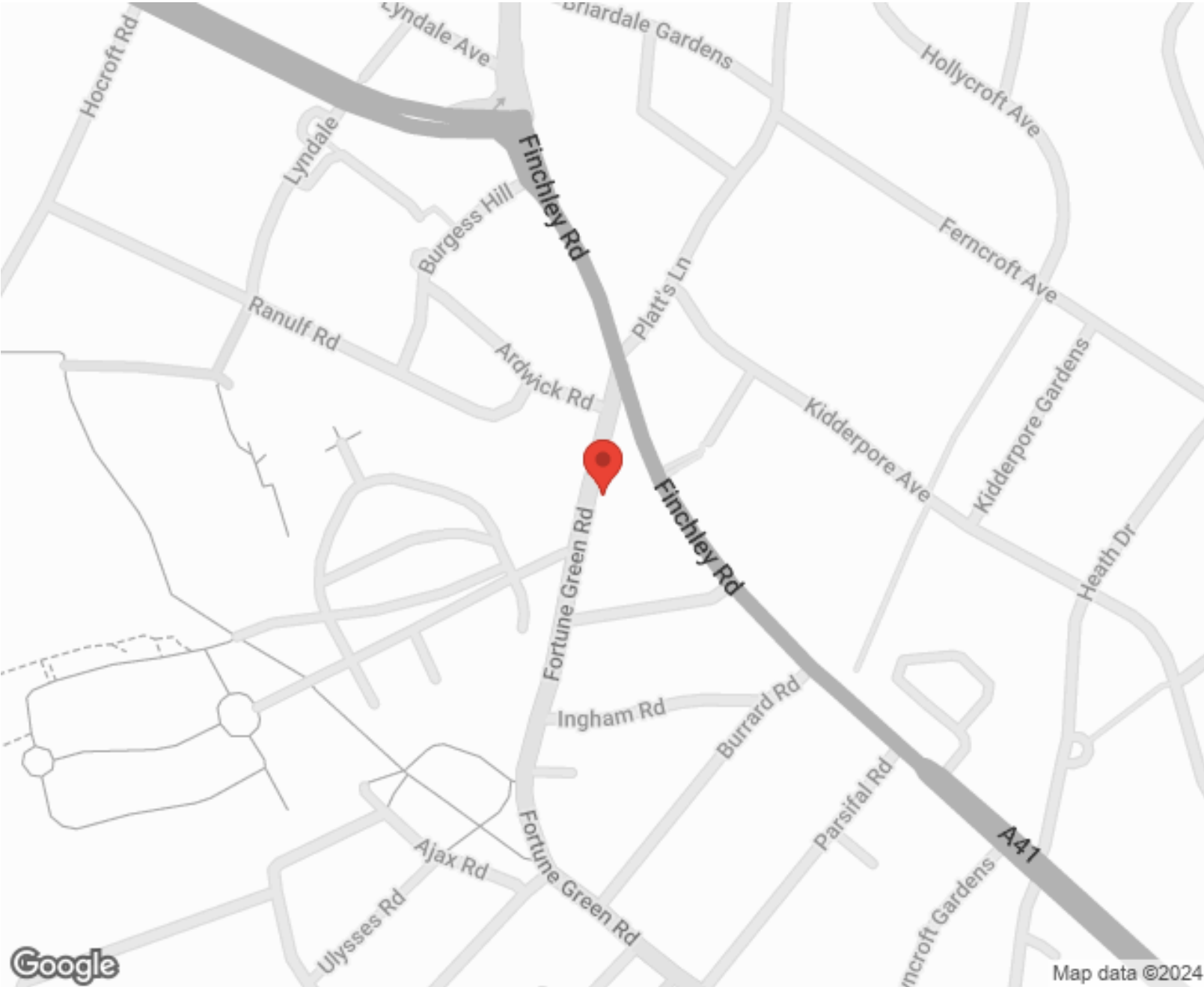
"I used Vita properties to find a flat recently and it was an overall professional, personalised and positive experience. Saira went the extra mile to accommodate to our needs and quick to help us whenever possible."



MORE INFO, PICTURES,
CONTACT ON
OUR WEBSITE



"Vita Properties is a very professional agency. My experience with them was incredible and the entire team was very helpful and kind throughout the renting process. I'd highly recommend!"



Score	Energy rating	Current	Potential
92+	A		
81-91	B		82 B
69-80	C	74 C	
55-68	D		
39-54	E		
21-38	F		
1-20	G		

SCAN FOR MORE
GOOGLE REVIEWS

Google
★★★★★
4.9 Stars | 132 Reviews

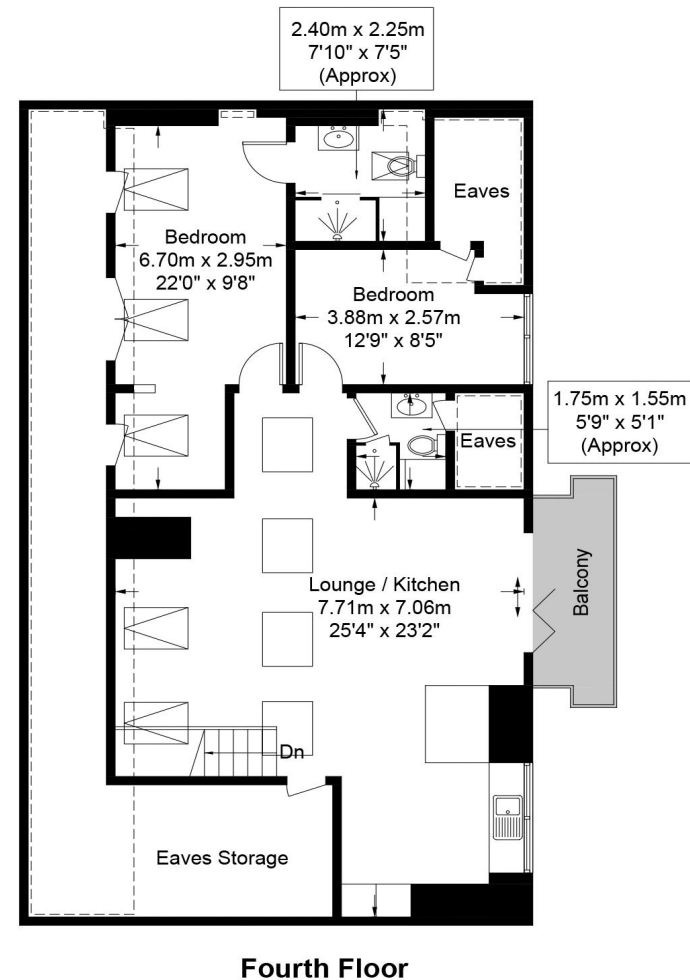
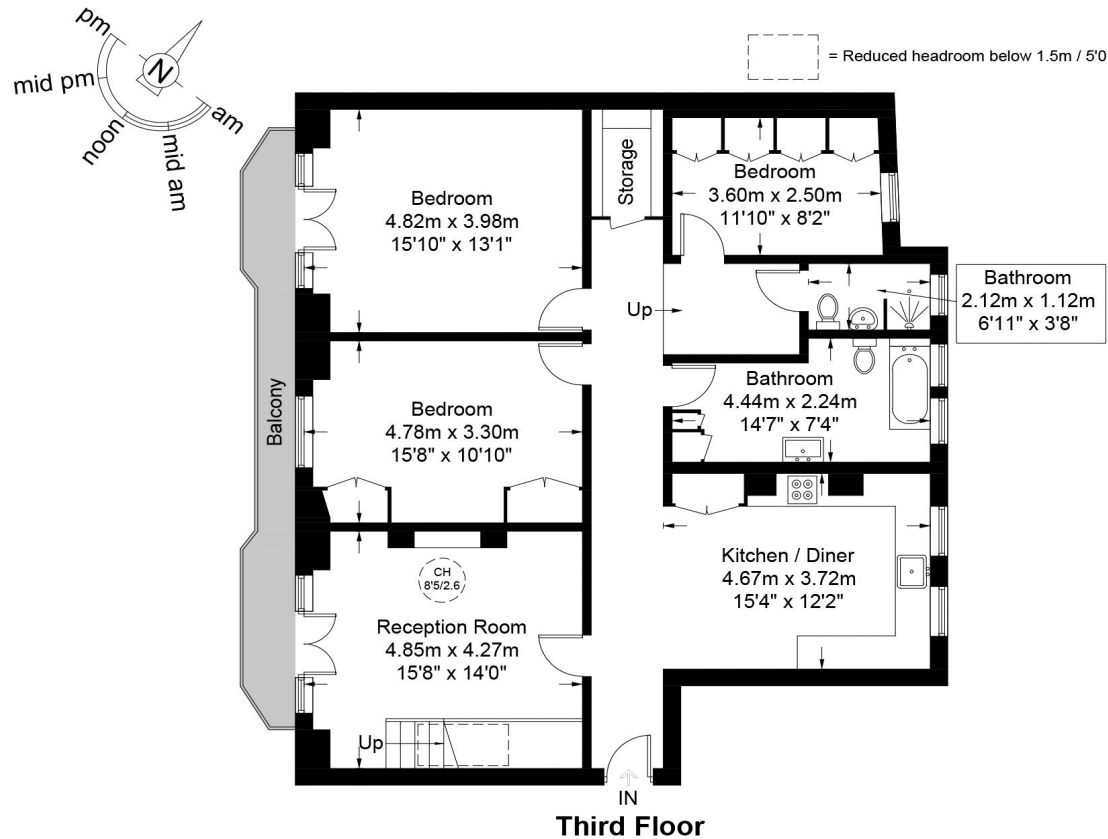
Find us on social media

vitaproperties
 VitaProperties
 VitaProperties

Burgess Park Mansions, NW6

Approximate Gross Internal Area = 2574 sq ft / 239.1 sq m

Restricted Height = 393 sq ft / 36.5 sq m



This plan is for layout guidance only and is not drawn to scale unless stated. All dimensions, including windows, doors, and the Total Gross Internal Area (GIA), are approximate. For precise measurements, please consult a qualified architect or surveyor before making any decisions based on this plan.



Certified
Property
Measurer