



Wessex Gardens, Golders Green, London NW11 . | £1,595

- House in NW11
- 5 bedrooms
- Terrace
- Off Street Parking

- Available 12th February
- Recently Refurbished

"Vita Properties have been tremendously helpful throughout the process of securing/renting my flat. Informative about the property, prompt communication, easy to use dashboard for sharing of information, and pleasant to work with. Highly recommend!"

A recently refurbished family home available on the 12th February. The home is immaculately presented throughout and offers ample living accommodation. The property comprises principal bedroom with en-suite bathroom and dressing area, four further double bedrooms, four bathrooms, double reception room with wood flooring and an eat in kitchen. Further benefits include a private garden, terrace off the master bedroom and off street parking. Golders Green shops and amenities are located within 0.5 mile and Brent Cross Underground Station is 0.4 miles from the property.



Oliver Kent

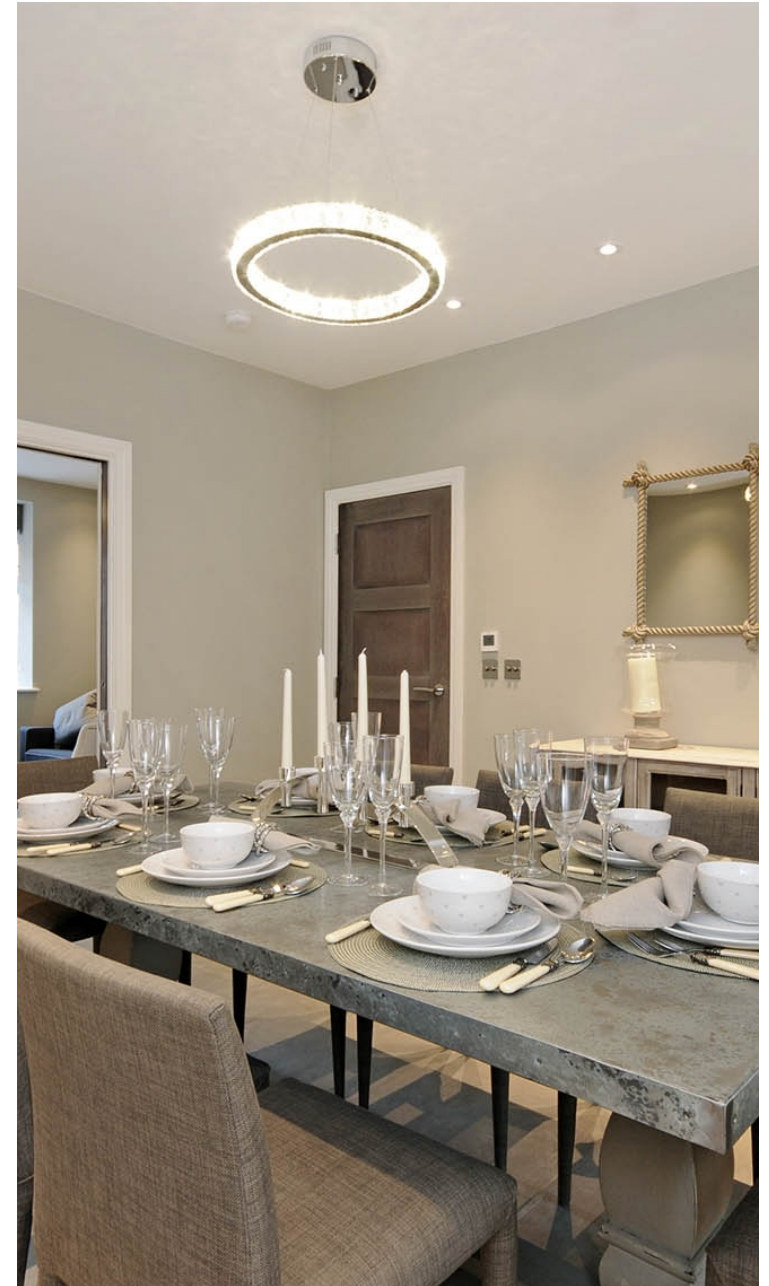
✉ oliver.kent@vitaproperties.uk
☎ +4477 7274 0351



🏠 House
🔑 Available
to Let
🛏 x 5
🛋 x 3
🚿 x 5



"I was very impressed with Vita and their network of buyers. When the sale of my flat fell through (twice) they worked extremely hard to find new buyers in a difficult market - thank you!"



"Working with Vita properties has been a smooth experience! No complaints at all. Our letting agent, Diana has been fantastic and very helpful throughout the whole process. I would highly recommend both Vita properties and Diana."



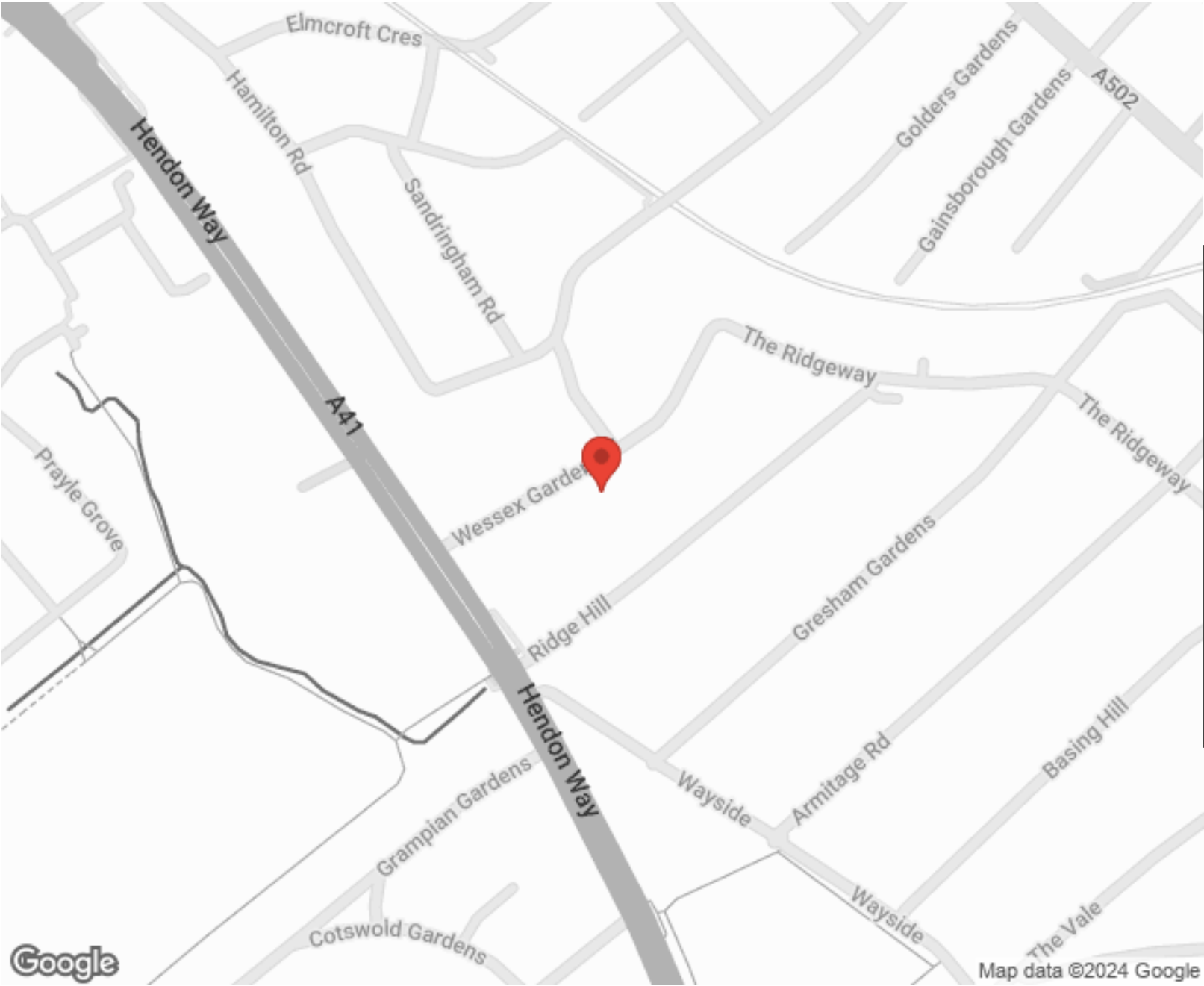
"I used Vita properties to find a flat recently and it was an overall professional, personalised and positive experience. Saira went the extra mile to accommodate to our needs and quick to help us whenever possible."



MORE INFO, PICTURES,
CONTACT ON
OUR WEBSITE



"Vita Properties is a very professional agency. My experience with them was incredible and the entire team was very helpful and kind throughout the renting process. I'd highly recommend!"



Score	Energy rating	Current	Potential
92+	A		
81-91	B		
69-80	C		80 C
55-68	D	63 D	
39-54	E		
21-38	F		
1-20	G		

SCAN FOR MORE
GOOGLE REVIEWS






Google



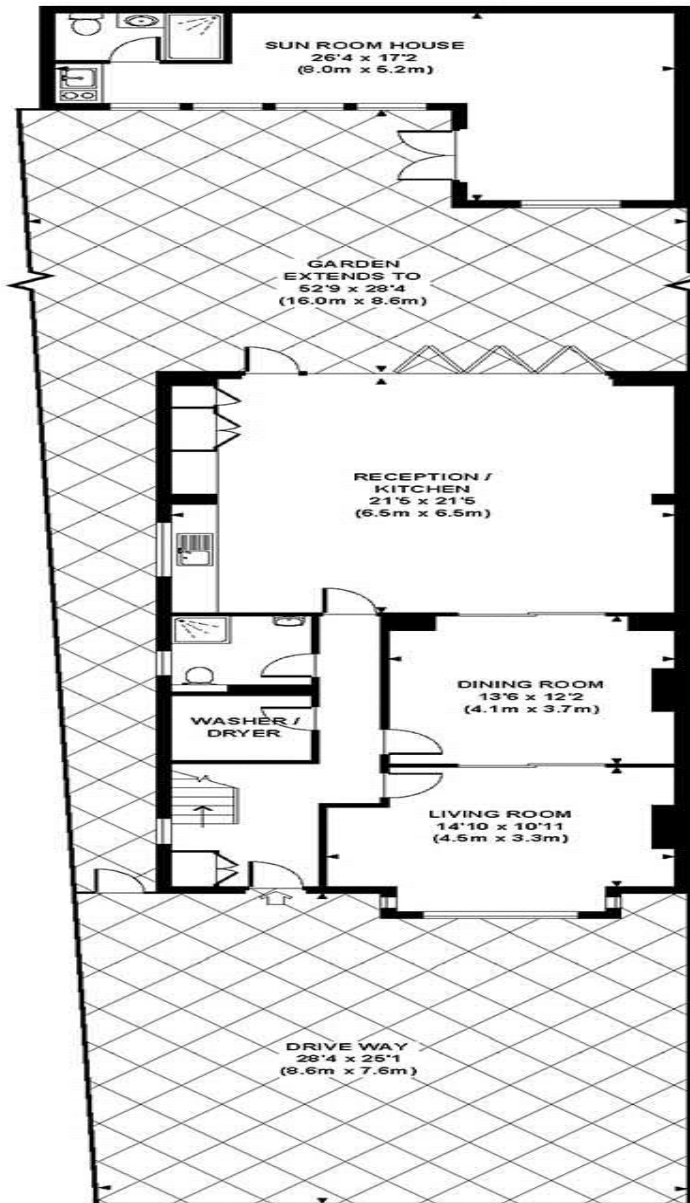
4.9 Stars | 132 Reviews

Find us on social media

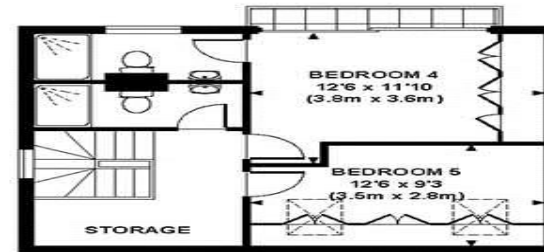
-  vitaproperties
-  VitaProperties
-  VitaProperties

WESSEX GARDENS, NW11

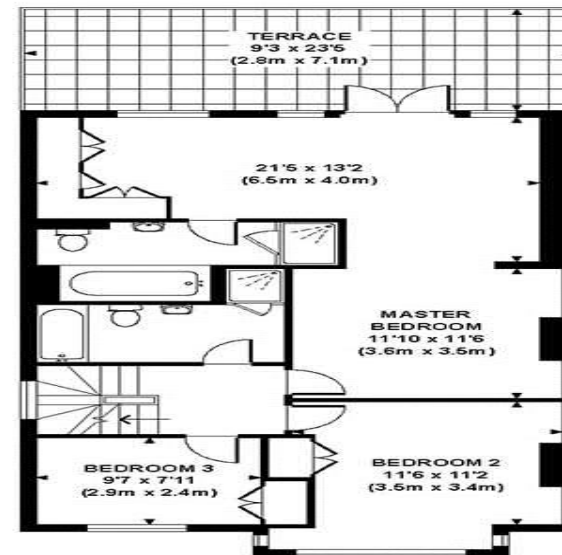
Approximate Gross Internal Area 2368 sq ft / 220.0 sq m
Approximate Gross Internal Area 2818 sq ft / 261.8 sq m Inc. Sun Room House



GROUND FLOOR
GROSS INTERNAL
FLOOR AREA 1007 SQ FT



SECOND FLOOR
GROSS INTERNAL
FLOOR AREA 443 SQ FT



FIRST FLOOR
GROSS INTERNAL
FLOOR AREA 918 SQ FT

Although every attempt has been made to ensure accuracy, all measurements are approximate.
The floor plan's for illustrative purposes only and not to scale. Measured in accordance to RICS standards.
Sizes to this floor plan are agreed on by SD Investments and Management.
DE-PHOTOGRAPHY.NET