



## Park Village West, Regents Park, London NW1 .| £4,500

- Close to Schools
- Moments from Regents Park and Primrose Hill
- Modern
- Garden

- Spanning over 2,781 sq ft (258.35 sqm)
- Available Immediately



"Vita Properties have been tremendously helpful throughout the process of securing/renting my flat. Informative about the property, prompt communication, easy to use dashboard for sharing of information, and pleasant to work with. Highly recommend!"

Discover the epitome of luxury living in this contemporary four-bedroom Nash villa, now available for immediate occupancy. Boasting a Grade II\* listed status, this residence seamlessly blends period features with modern comforts. Spanning four floors, the 2,781 sq.ft (258.35 sq.m.) of flexible living space is complemented by a generous 3,500 sq.ft outdoor oasis, perfect for both relaxation and entertainment.






The property has recently undergone a stunning redecoration, presenting a fresh and sophisticated aesthetic throughout. The interior features a spacious principal bedroom with a dressing room and ensuite bathroom, three additional bedrooms, a versatile study/fifth bedroom, a shower room, wet room, and steam room. Enhancing convenience, there are two separate WC's strategically placed within the home.

The modern kitchen is flooded with natural light, creating an inviting atmosphere for culinary endeavors.

A private patio area offers a serene escape, while the expansive reception room and dining area, complete with a dumbwaiter service lift, provide ample space for social gatherings.

Nestled in Park Village West, just moments away from Regent's Park, this property offers proximity to an array of recreational facilities, including the Zoological Gardens, Open Air Theatre, Queen Mary's Gardens, and more. For ease of commute, Great Portland Street and Camden Town Underground stations are conveniently located within 0.8 and 0.5 miles, respectively.



This extraordinary residence not only captivates with its period charm but also caters to modern lifestyles with air conditioning, a utility room, and staff accommodation.

 House  
 Available  
to Let  
 x 4  
 x 3  
 x 3

SCAN FOR  
A VIDEO  
WALKTHROUGH



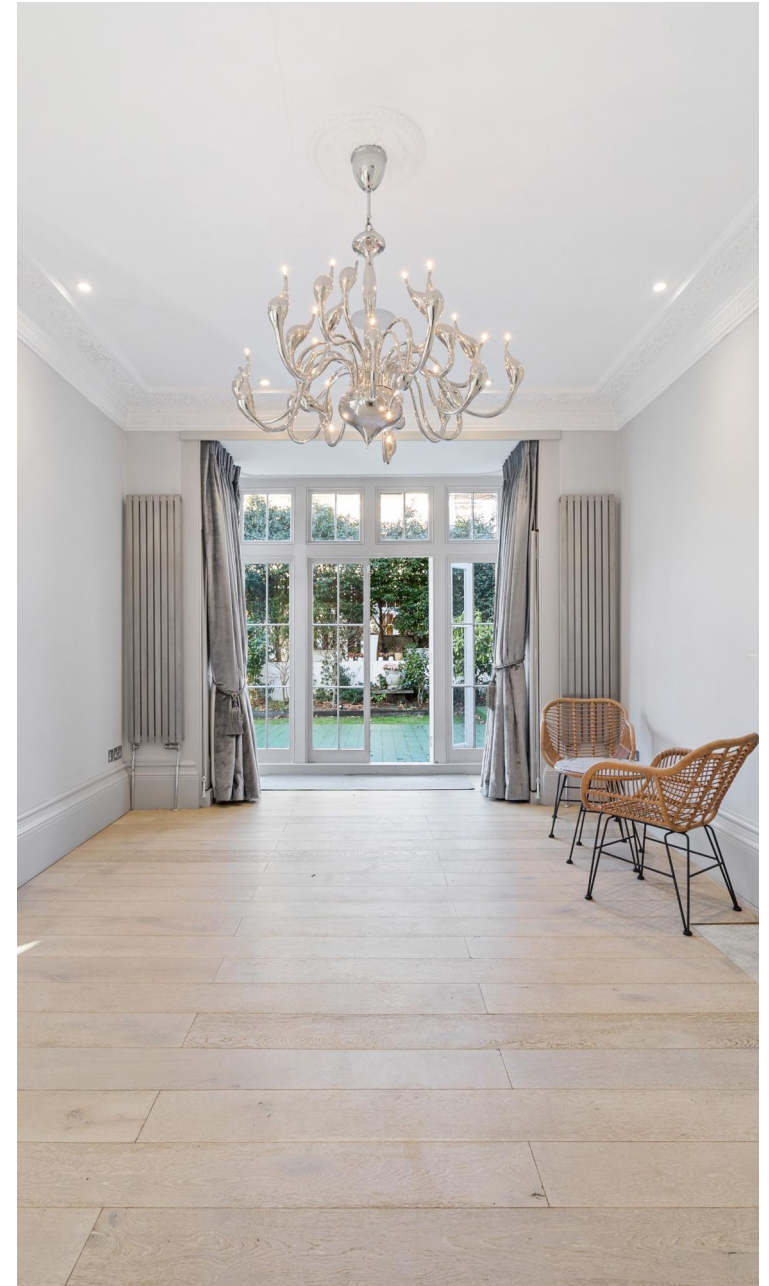
Saira Ishfaq

 [saira@vitaproperties.uk](mailto:saira@vitaproperties.uk)  
 +4475 5575 4510



"I was very impressed with Vita and their network of buyers. When the sale of my flat fell through (twice) they worked extremely hard to find new buyers in a difficult market - thank you!"

---





"Working with Vita properties has been a smooth experience! No complaints at all. Our letting agent, Diana has been fantastic and very helpful throughout the whole process. I would highly recommend both Vita properties and Diana."

---





"I used Vita properties to find a flat recently and it was an overall professional, personalised and positive experience. Saira went the extra mile to accommodate to our needs and quick to help us whenever possible."

---

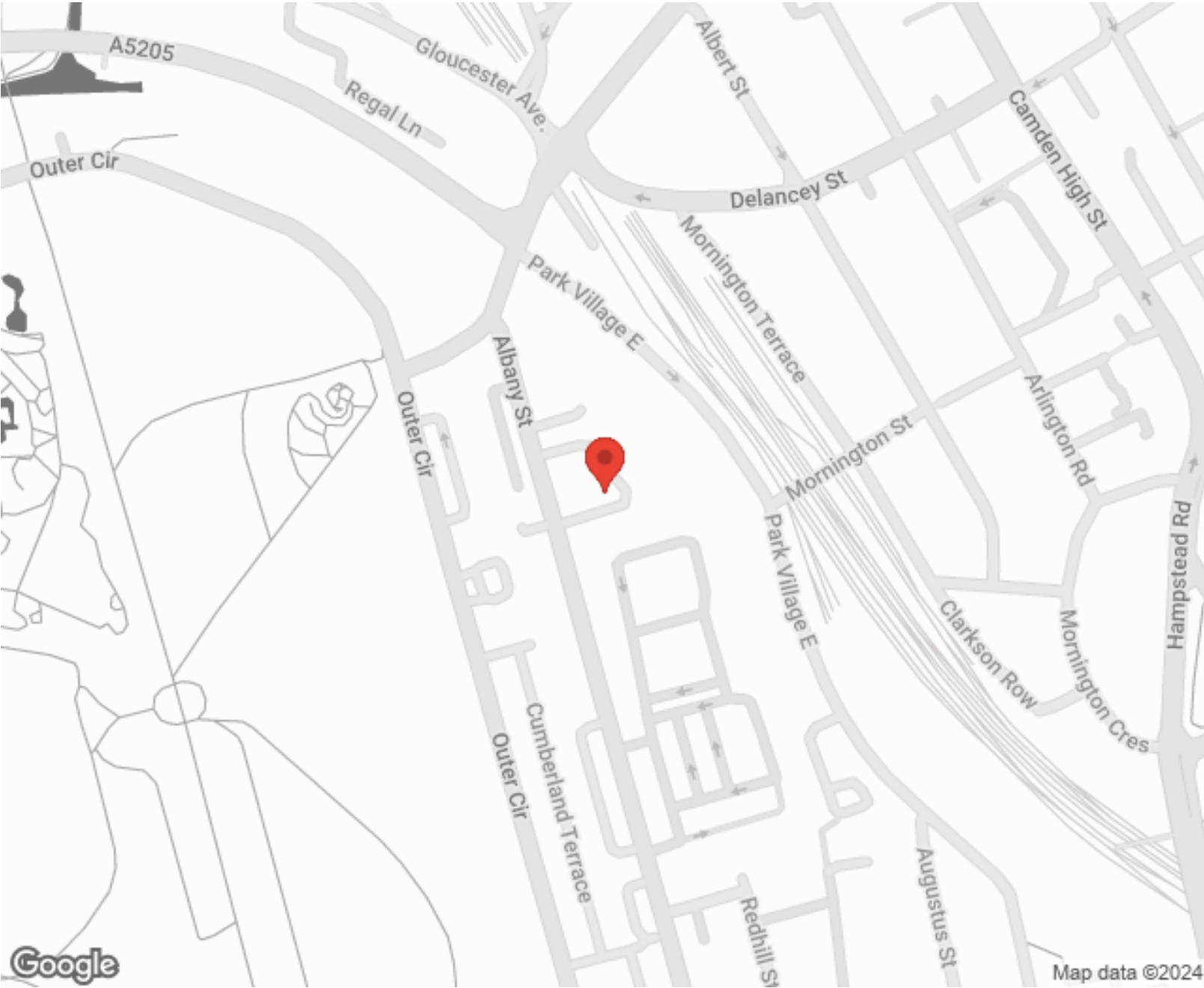


MORE INFO, PICTURES,  
CONTACT ON  
OUR WEBSITE





"Vita Properties is a very professional agency. My experience with them was incredible and the entire team was very helpful and kind throughout the renting process. I'd highly recommend!"



Score	Energy rating	Current	Potential
92+	A		
81-91	B		
69-80	C		77 C
55-68	D	55 D	
39-54	E		
21-38	F		
1-20	G		

SCAN FOR MORE  
GOOGLE REVIEWS



Google



4.9 Stars | 132 Reviews

Find us on social media



vitaproperties



VitaProperties

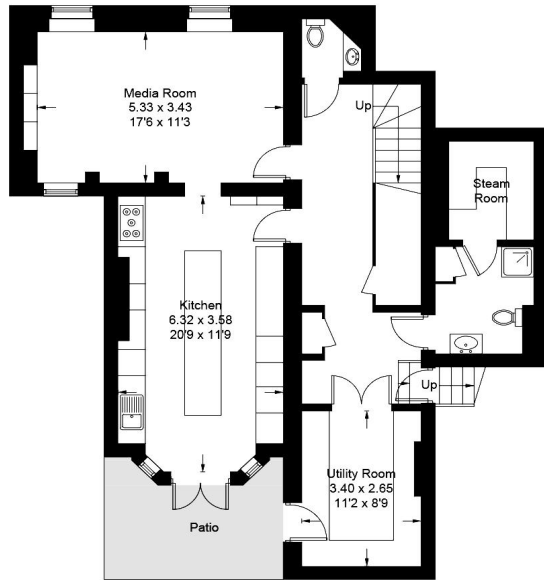


VitaProperties

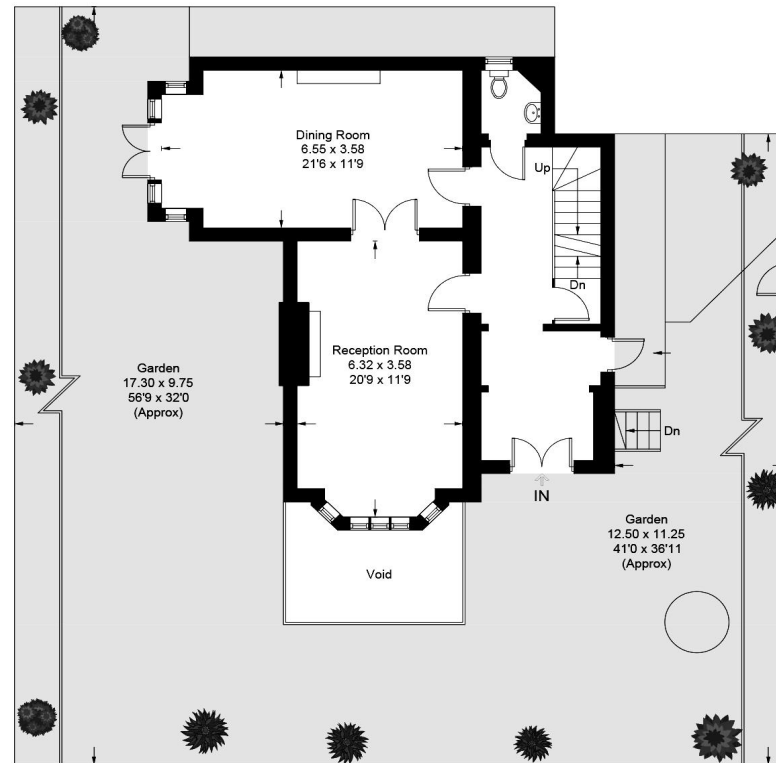


# Park Village West, NW1

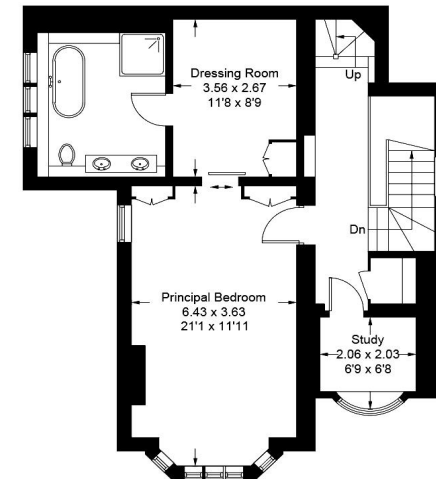
Approximate Gross Internal Area = 258.3 sq m / 2781 sq ft



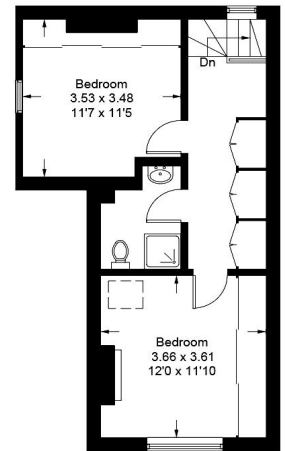
Lower Ground Floor



Ground Floor



First Floor



Second Floor