



Priory Road, South Hampstead, London NW6 .| £735,000

- Share Of Freehold
- 900 SQ FT
- Private Communal Gardens
- Lifts

- Low Service Charge
- Private Communal Gardens

"Vita Properties have been tremendously helpful throughout the process of securing/renting my flat. Informative about the property, prompt communication, easy to use dashboard for sharing of information, and pleasant to work with. Highly recommend!"

A bright and spacious two double bedroom, two-bathroom (one en-suite) apartment with high ceilings in a purpose-built block. This property is situated on West Hampstead favoured residential addresses and it is a very short walk to St John's Wood and Maida Vale.

Flooded with natural light throughout the property comprises a spacious reception room with an area to dine, a separate kitchen, two large double bedrooms with two recently refurbished bathrooms and a well maintained private communal garden.



This property is located on a very quiet neighbourhood in West Hampstead and has multiple shops, amenities, transport links and parks nearby such as: -

Closest Parks - Regent's Park, Hampstead Heath, Kilburn Grange Park and Paddington Recreation.

Closest Tube Station - West Hampstead Underground (Jubilee Line) - 7-minutes, Finchley Road Station (Jubilee & Metropolitan) - 10-minutes, West Hampstead Overground Train Station - 8 Minutes, West Hampstead Thameslink - 9 Minutes, Finchley Road Underground Station (Metropolitan and Jubilee lines) - 10 Minutes, Kilburn Park Underground Station (Bakerloo) - 7 Minutes and Kilburn High Road Overground Rail Station - 6 Minutes.

Bus: various bus connections including buses 328, 139 and 189 to Oxford Street (and beyond!). - 2-minute walk to bus stop

You have every supermarket, cuisine, restaurants and shops within a 7-minute walk away.

 Flat
 Share of
Freehold
 x 2
 x 1
 x 2



Oliver Kent

 oliver.kent@vitaproperties.uk
 +4477 7274 0351



"I was very impressed with Vita and their network of buyers. When the sale of my flat fell through (twice) they worked extremely hard to find new buyers in a difficult market - thank you!"



"Working with Vita properties has been a smooth experience! No complaints at all. Our letting agent, Diana has been fantastic and very helpful throughout the whole process. I would highly recommend both Vita properties and Diana."



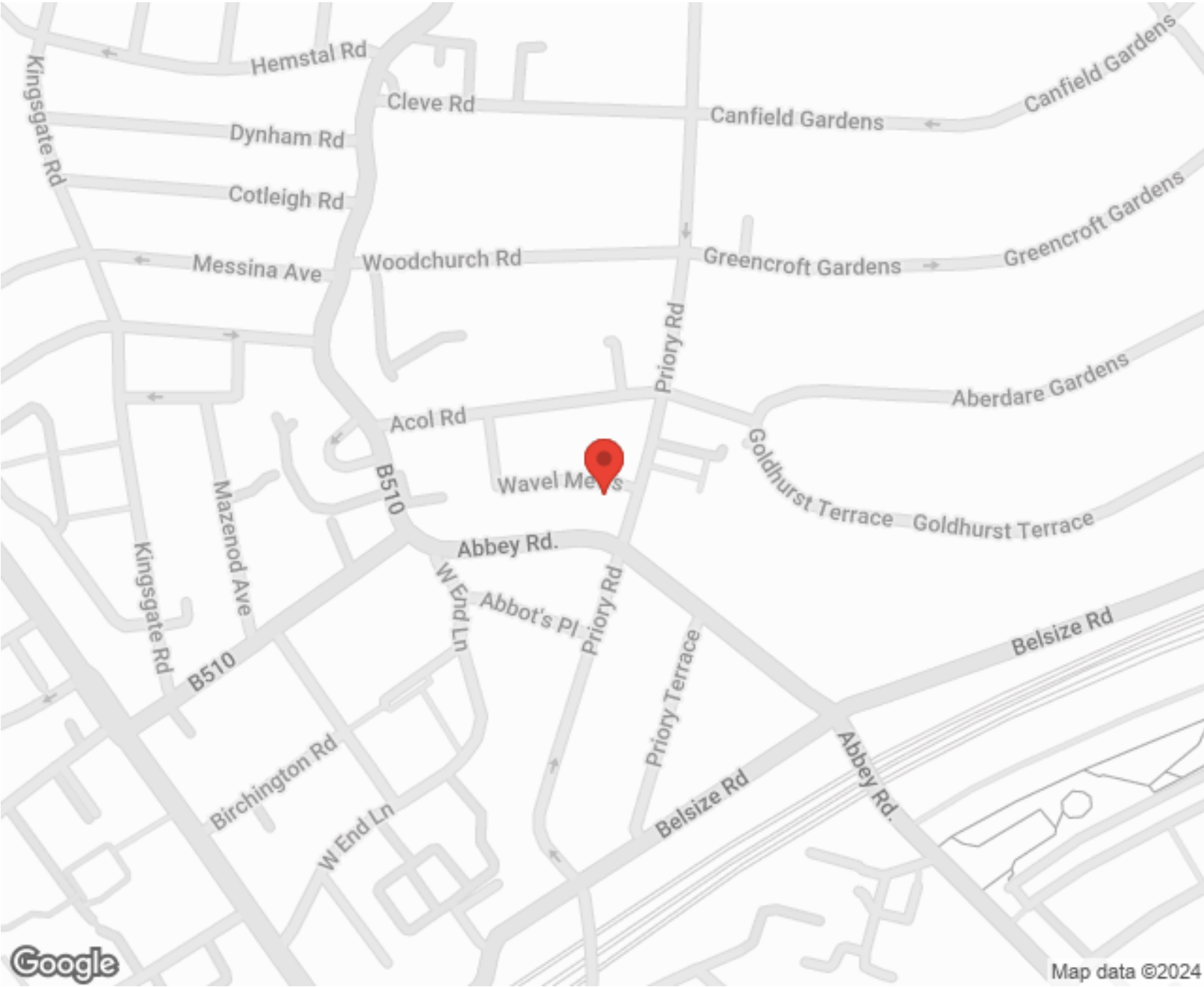
"I used Vita properties to find a flat recently and it was an overall professional, personalised and positive experience. Saira went the extra mile to accommodate to our needs and quick to help us whenever possible."



MORE INFO, PICTURES,
CONTACT ON
OUR WEBSITE



"Vita Properties is a very professional agency. My experience with them was incredible and the entire team was very helpful and kind throughout the renting process. I'd highly recommend!"



Score	Energy rating	Current	Potential
92+	A		
81-91	B		
69-80	C		70 C
55-68	D	65 D	
39-54	E		
21-38	F		
1-20	G		

SCAN FOR MORE
GOOGLE REVIEWS

Google
★★★★★
4.9 Stars | 132 Reviews

Find us on social media

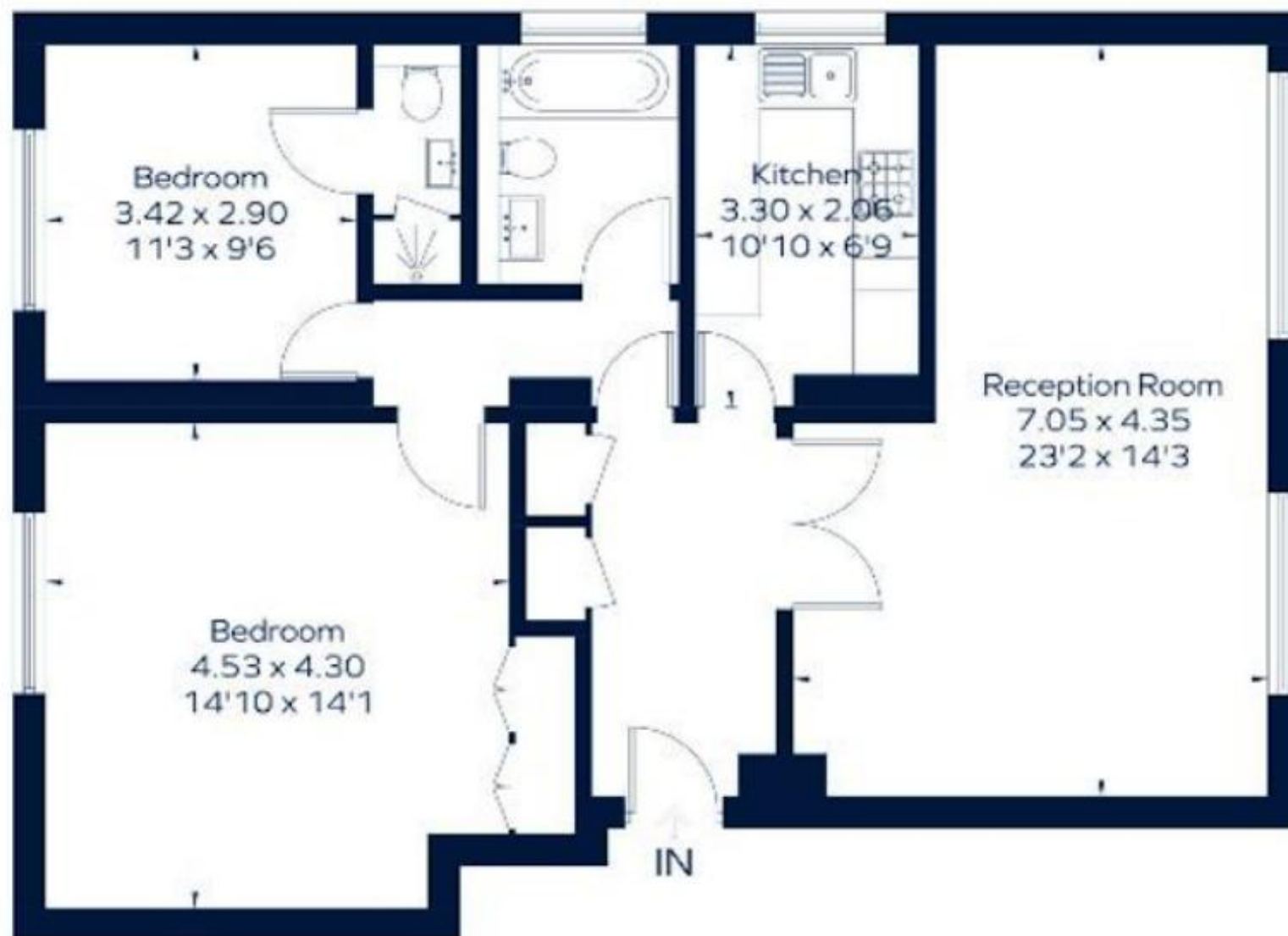
vitaproperties

VitaProperties

VitaProperties

Priory Road

Approximate Gross Internal Area = 895 sq. ft. (83.2 sq. m.)



Ground Floor