



The Mount, Hampstead Village, London NW3 .| £1,000

- Period Conversion
- Close To Hampstead Heath
- Close To Hampstead Village
- Roof Terrace

- Interior Designed
- Available 23 October 2023
- Council tax - E - £1619 per annum

"Vita Properties have been tremendously helpful throughout the process of securing/renting my flat. Informative about the property, prompt communication, easy to use dashboard for sharing of information, and pleasant to work with. Highly recommend!"

A two bedroom stunning apartment in the heart of Hampstead village with spectacular views and pristine, stylish interior, brand new kitchen and bathroom, double volume reception and fabulous private roof garden.



Saira Ishfaq

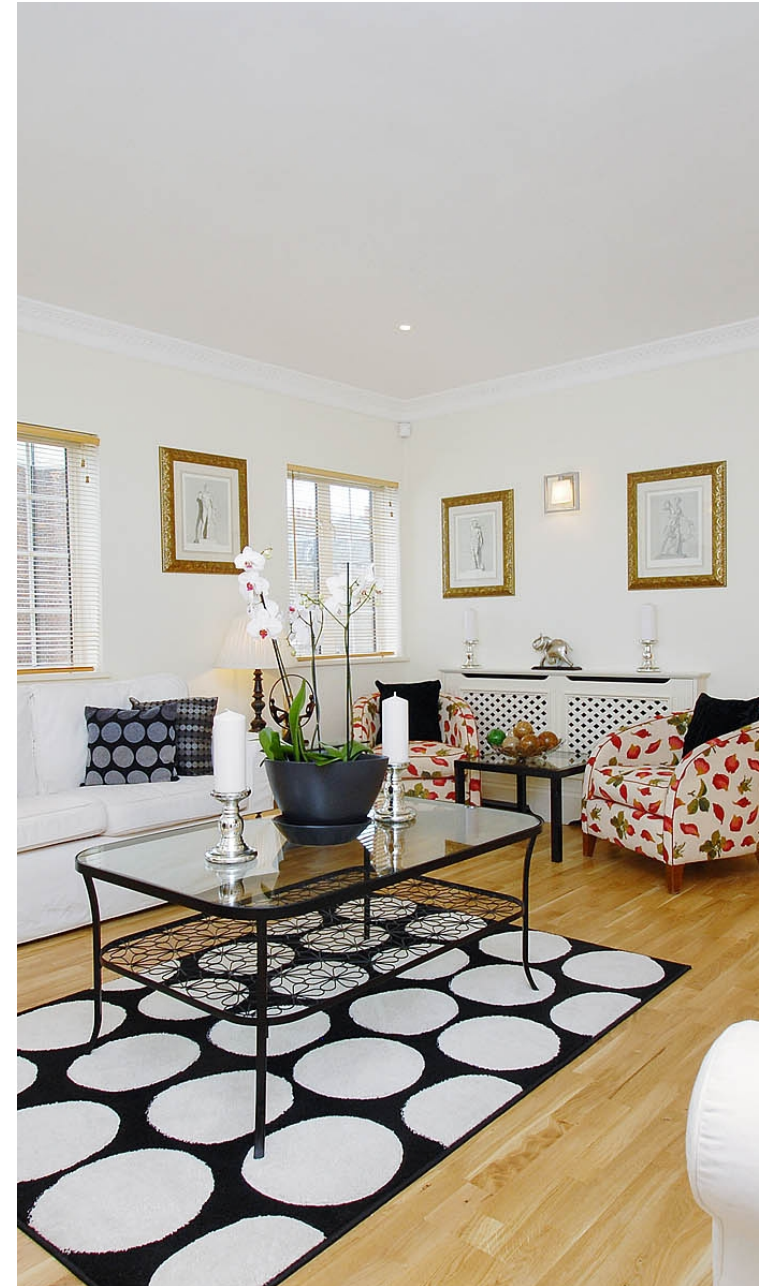
✉ saira@vitaproperties.uk
☎ +4475 5575 4510



🏠 Flat
🔑 Available
to Let
🛏 x 2
🛋 x 1
🚿 x 2



"I was very impressed with Vita and their network of buyers. When the sale of my flat fell through (twice) they worked extremely hard to find new buyers in a difficult market - thank you!"



"Working with Vita properties has been a smooth experience! No complaints at all. Our letting agent, Diana has been fantastic and very helpful throughout the whole process. I would highly recommend both Vita properties and Diana."



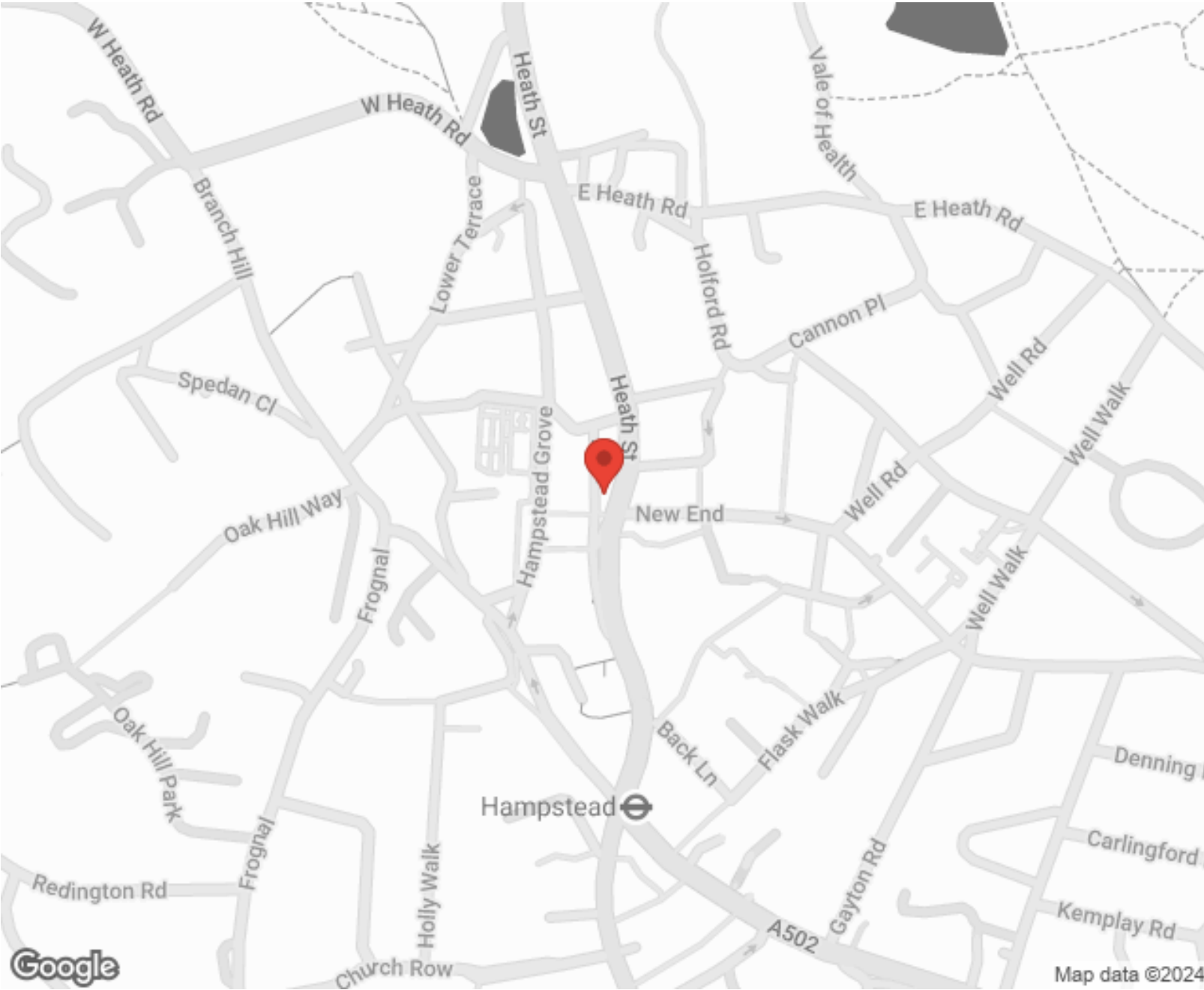
"I used Vita properties to find a flat recently and it was an overall professional, personalised and positive experience. Saira went the extra mile to accommodate to our needs and quick to help us whenever possible."



MORE INFO, PICTURES,
CONTACT ON
OUR WEBSITE




"Vita Properties is a very professional agency. My experience with them was incredible and the entire team was very helpful and kind throughout the renting process. I'd highly recommend!"



Map data ©2024




Score	Energy rating	Current	Potential
92+	A		
81-91	B		
69-80	C		75 C
55-68	D	62 D	
39-54	E		
21-38	F		
1-20	G		

SCAN FOR MORE
GOOGLE REVIEWS



Google
★★★★★
4.9 Stars | 132 Reviews

Find us on social media

-  vitaproperties
-  VitaProperties
-  VitaProperties

THE MOUNT
NW3

Approximate gross internal area 556 sq ft - 52 sq m

