



Welbeck Close, Borehamwood, Herts WD6 .| £575,000

- Guest WC
- 2 Off Street Parking Spaces
- South East Facing Garden
- Loft

- 1477 sq foot of Living Space
- Porch

"Vita Properties have been tremendously helpful throughout the process of securing/renting my flat. Informative about the property, prompt communication, easy to use dashboard for sharing of information, and pleasant to work with. Highly recommend!"

Introducing a stunning 4-bedroom end of terrace house located in the desirable area of Borehamwood, Hertfordshire. This property offers a range of impressive features, making it an ideal family home.

As you step inside, you are greeted by a spacious and inviting interior. The ground floor boasts two reception rooms, including a converted garage and a formal dining room.

One of the standout features of this property is its private south-east facing garden. The well-maintained garden presents the perfect outdoor retreat, allowing you to soak up the sun and enjoy al fresco dining or leisurely activities with family and friends. Its orientation ensures you'll benefit from natural sunlight throughout the day.

Convenience is also a key highlight of this house, with off-street parking available for two cars. You can bid farewell to the hassle of finding parking spaces, as this property provides a dedicated area for your vehicles, ensuring easy access and peace of mind.

The interior of the house has been meticulously designed with a turnkey finish, offering a modern and stylish aesthetic. The tasteful decor, combined with high-quality fixtures and fittings, creates a luxurious and contemporary ambiance throughout.

Upstairs, you will find a a cozy family lounge, four generously-sized bedrooms, providing ample space for a growing family or accommodating guests. Each bedroom offers comfort and privacy, allowing for peaceful nights and restful sleep. Additionally, the property features well-appointed bathrooms, providing convenience and functionality for the household.

Situated in Borehamwood, Hertfordshire, this home benefits from its prime location.

-  House
-  Freehold
-  x 4
-  x 3
-  x 2

SCAN FOR
A VIDEO
WALKTHROUGH

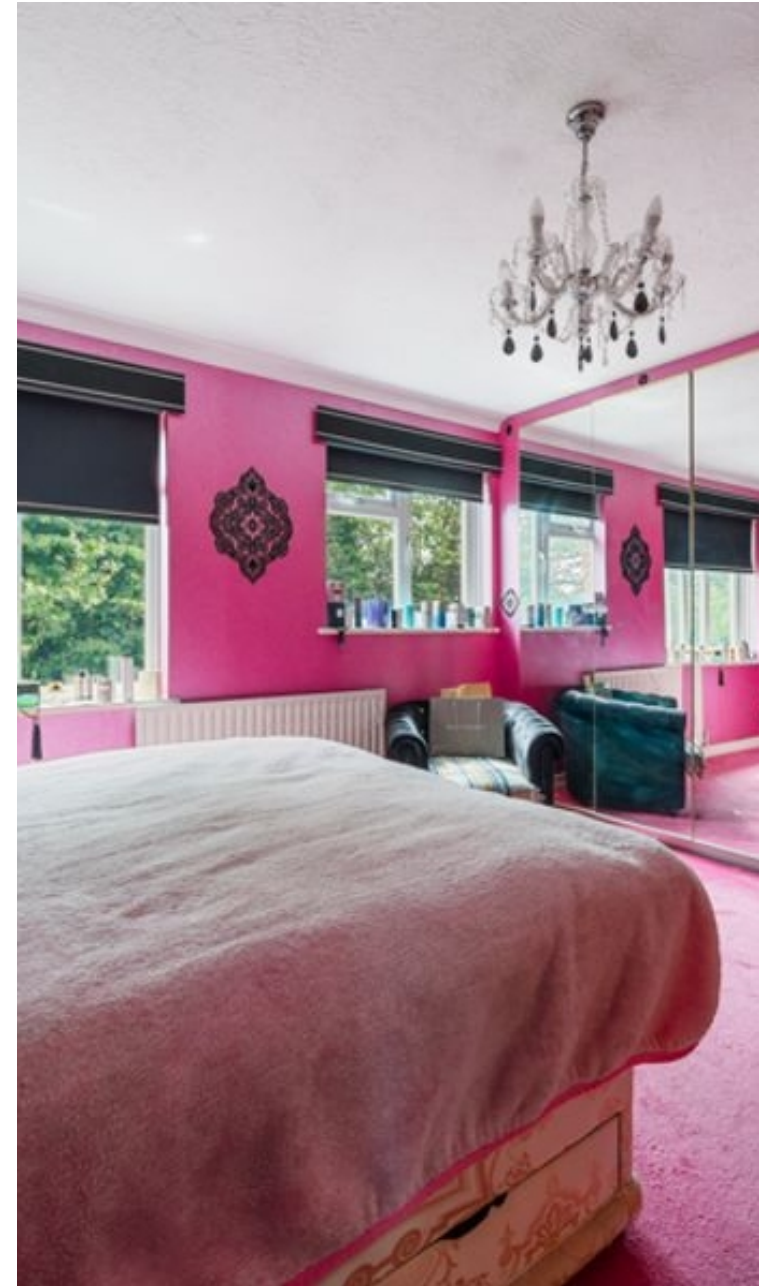


Oliver Kent

 oliver.kent@vitaproperties.uk
 +4477 7274 0351



"I was very impressed with Vita and their network of buyers. When the sale of my flat fell through (twice) they worked extremely hard to find new buyers in a difficult market - thank you!"



"Working with Vita properties has been a smooth experience! No complaints at all. Our letting agent, Diana has been fantastic and very helpful throughout the whole process. I would highly recommend both Vita properties and Diana."



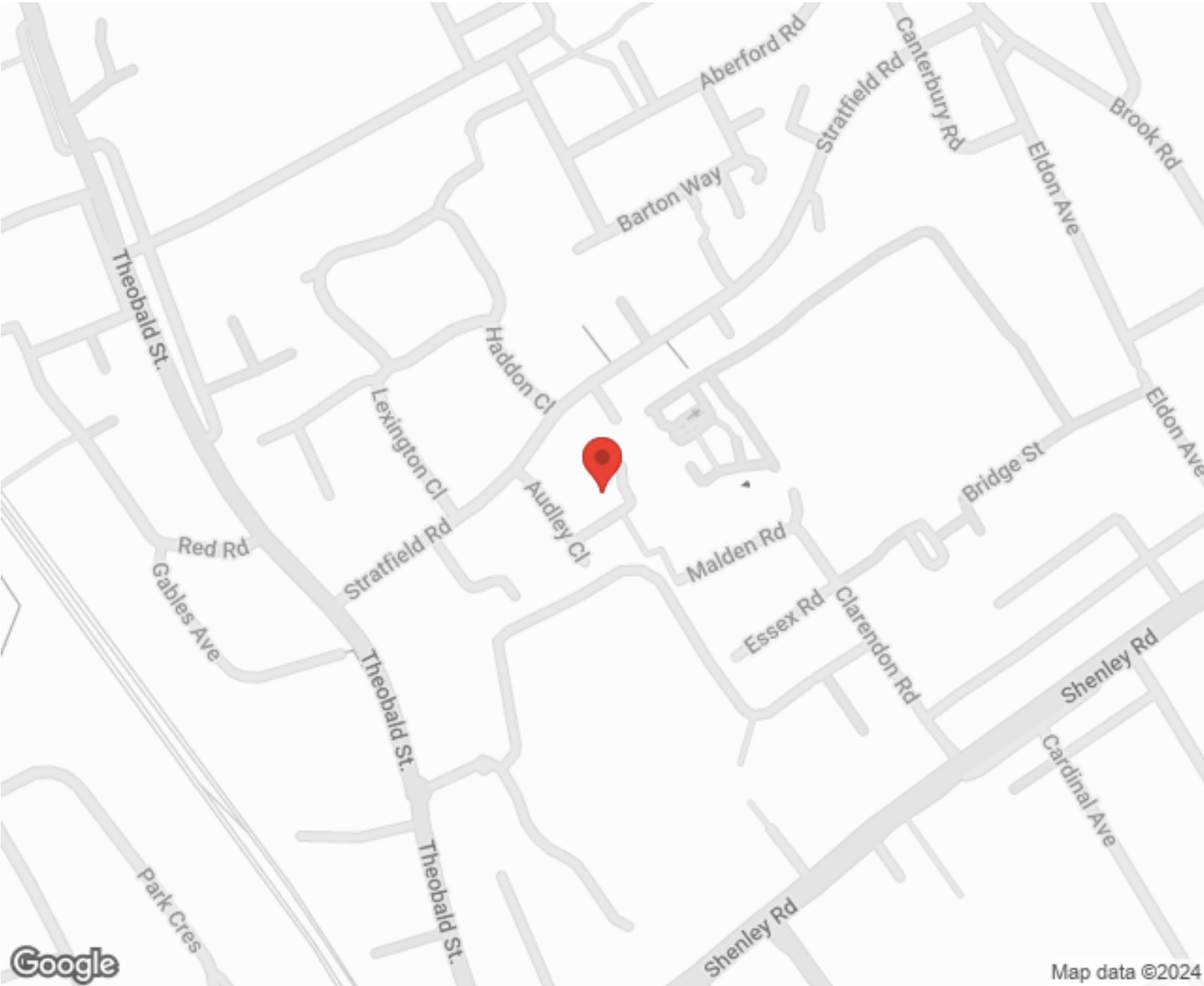
"I used Vita properties to find a flat recently and it was an overall professional, personalised and positive experience. Saira went the extra mile to accommodate to our needs and quick to help us whenever possible."



MORE INFO, PICTURES,
CONTACT ON
OUR WEBSITE



"Vita Properties is a very professional agency. My experience with them was incredible and the entire team was very helpful and kind throughout the renting process. I'd highly recommend!"



Score	Energy rating	Current	Potential
92+	A		
81-91	B		83 B
69-80	C		
55-68	D	64 D	
39-54	E		
21-38	F		
1-20	G		

SCAN FOR MORE
GOOGLE REVIEWS

Google
★★★★★
4.9 Stars | 132 Reviews

Find us on social media

vitaproperties

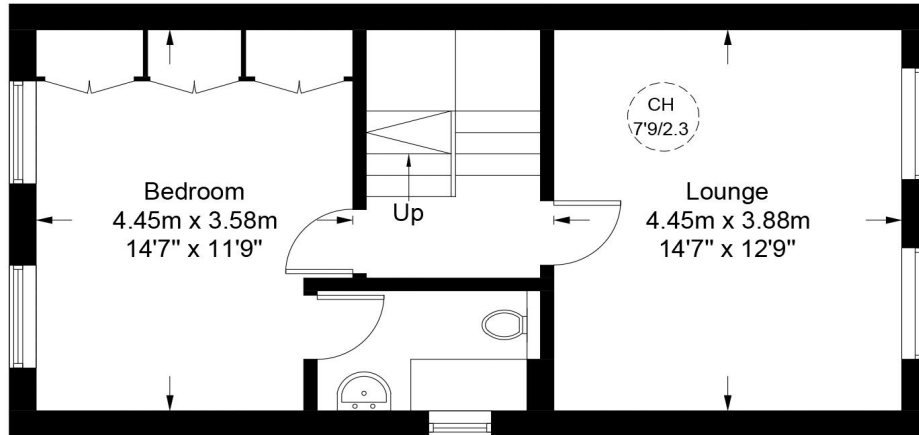
VitaProperties

VitaProperties

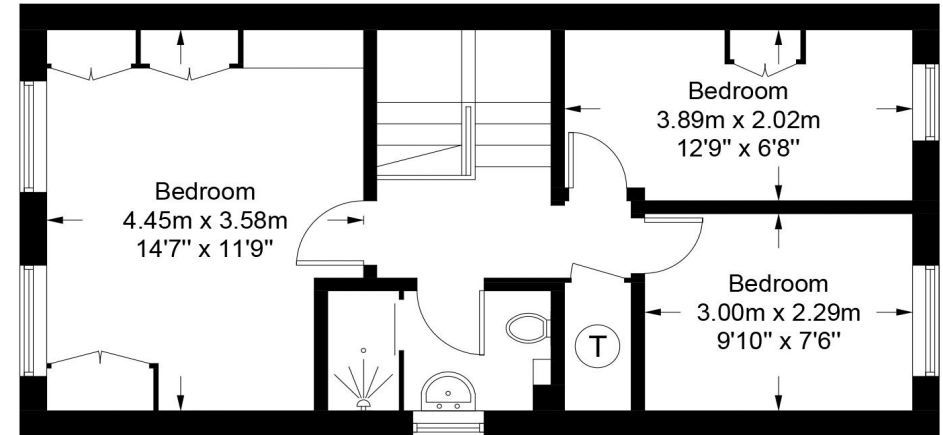


Welbeck Close, WD6

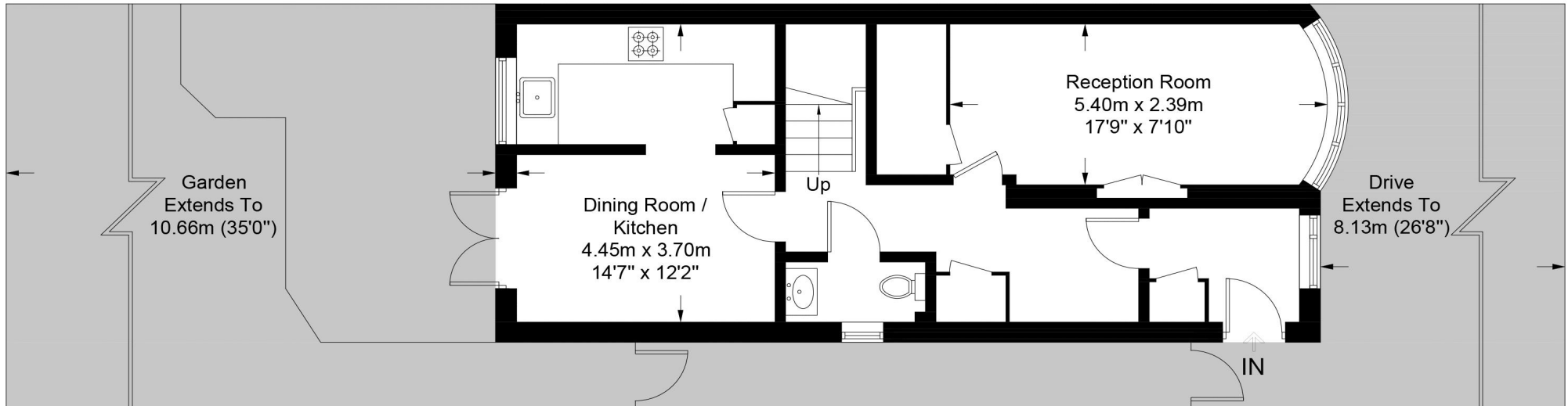
Approximate Gross Internal Area = 1477 sq ft / 137.2 sq m



First Floor



Second Floor



Ground Floor



**Certified
Property
Measurer**

This plan is for layout guidance only. Not drawn to scale unless stated. Windows and door openings are approximate. Whilst every care is taken in the preparation of this plan, please check all dimensions, shapes and compass bearings before making any decisions reliant upon them. (ID981514)