



Buttermere Court, Boundary Road, St Johns Wood, London NW8 .| £600,000

- Amazing Views Over London
- Porter
- Underground Parking Space
- 10th Floor

- Lift Access
- Share of Freehold

"Vita Properties have been tremendously helpful throughout the process of securing/renting my flat. Informative about the property, prompt communication, easy to use dashboard for sharing of information, and pleasant to work with. Highly recommend!"

---





Located on the 10th floor with lift access, this lovely one-bedroom apartment offers a bright and spacious living room, perfect for relaxation and entertaining. Step onto your private balcony and soak in the stunning views that will inspire you daily.

The modern kitchen is equipped with everything you need to get creative with your cooking. The master bedroom includes ample storage, keeping your space tidy and organized. The fully-tiled bathroom provides a tranquil retreat after a long day.

This property includes a Share of Freehold, giving you ownership and security, along with a private parking space for added convenience.



With St Johns Wood, Swiss Cottage, and South Hampstead Stations just a short walk away, commuting and exploring the city is easy. Plus, you'll find plenty of local shops, bars, and restaurants nearby for all your needs.

Don't miss out on this charming apartment! Contact us today to arrange a viewing and start enjoying stylish and convenient living in this sought-after location.

-  Flat
-  Share of Freehold
-  x 1
-  x 1
-  x 1



Nouri Alexander

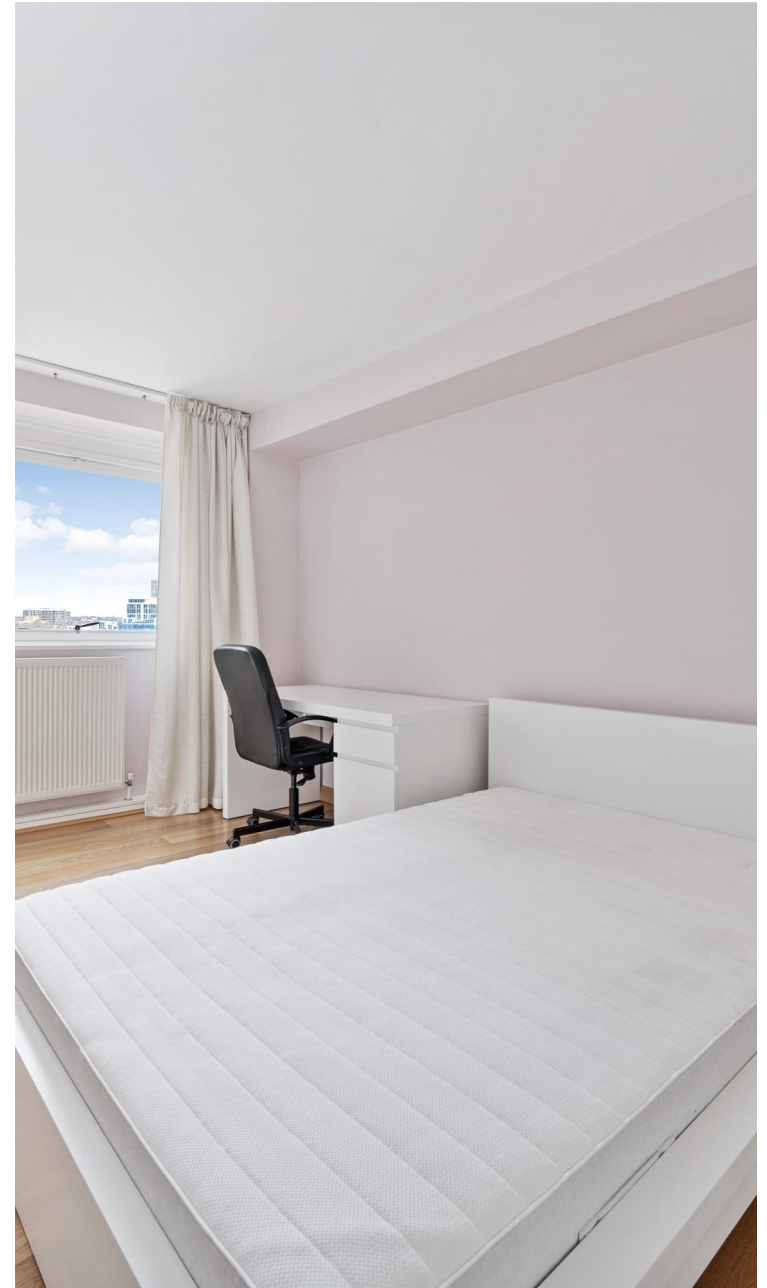
 [nouri.alexander@vitaproperties.uk](mailto:nouri.alexander@vitaproperties.uk)  
 +4475 8405 1289





"I was very impressed with Vita and their network of buyers. When the sale of my flat fell through (twice) they worked extremely hard to find new buyers in a difficult market - thank you!"

---



"Working with Vita properties has been a smooth experience! No complaints at all. Our letting agent, Diana has been fantastic and very helpful throughout the whole process. I would highly recommend both Vita properties and Diana."

---





"I used Vita properties to find a flat recently and it was an overall professional, personalised and positive experience. Saira went the extra mile to accommodate to our needs and quick to help us whenever possible."

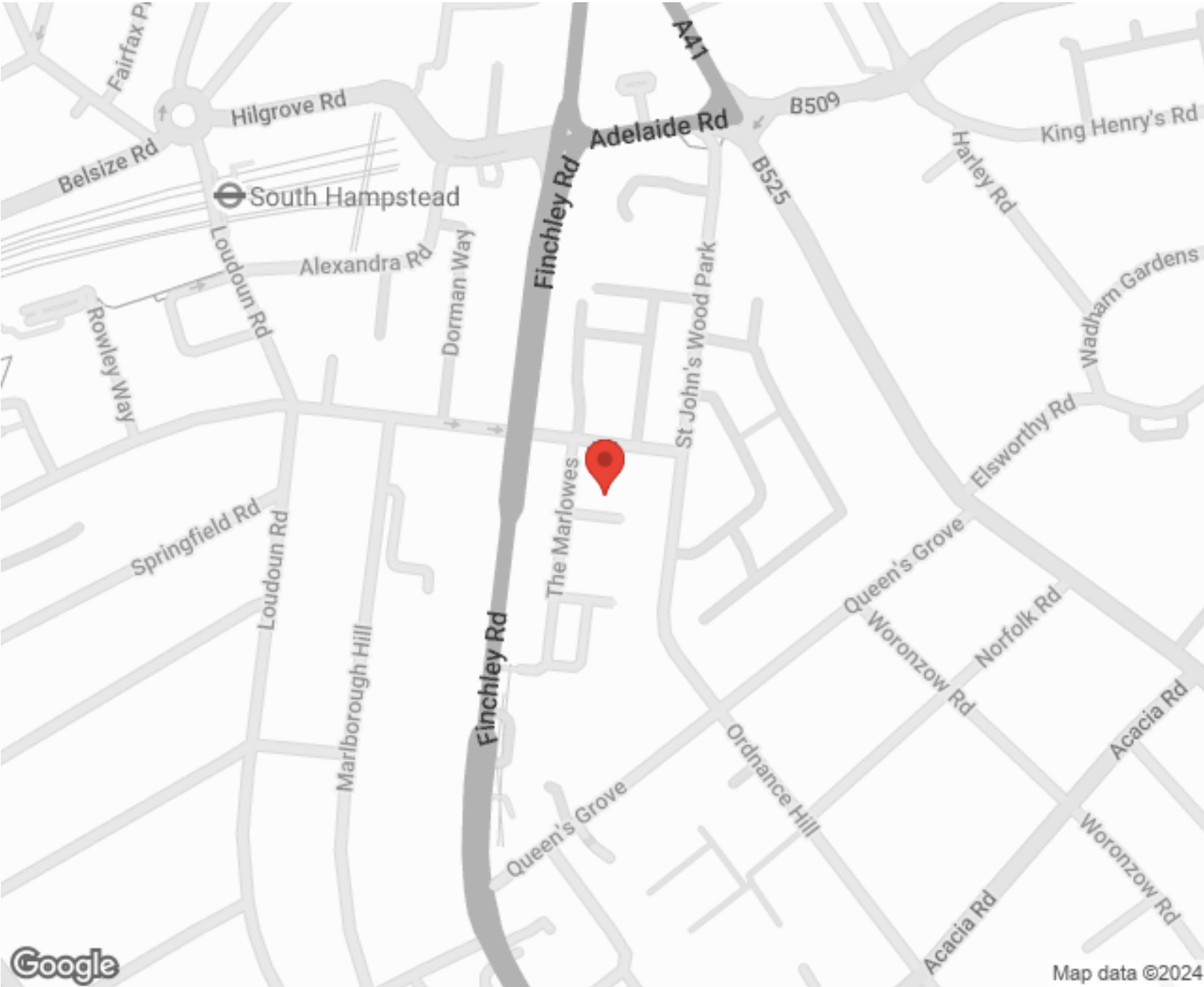
---



**MORE INFO, PICTURES,  
CONTACT ON  
OUR WEBSITE**



"Vita Properties is a very professional agency. My experience with them was incredible and the entire team was very helpful and kind throughout the renting process. I'd highly recommend!"



Score	Energy rating	Current	Potential
92+	A		
81-91	B		
69-80	C	74 C	80 C
55-68	D		
39-54	E		
21-38	F		
1-20	G		

SCAN FOR MORE  
GOOGLE REVIEWS

Google  
★★★★★  
4.9 Stars | 132 Reviews

Find us on social media

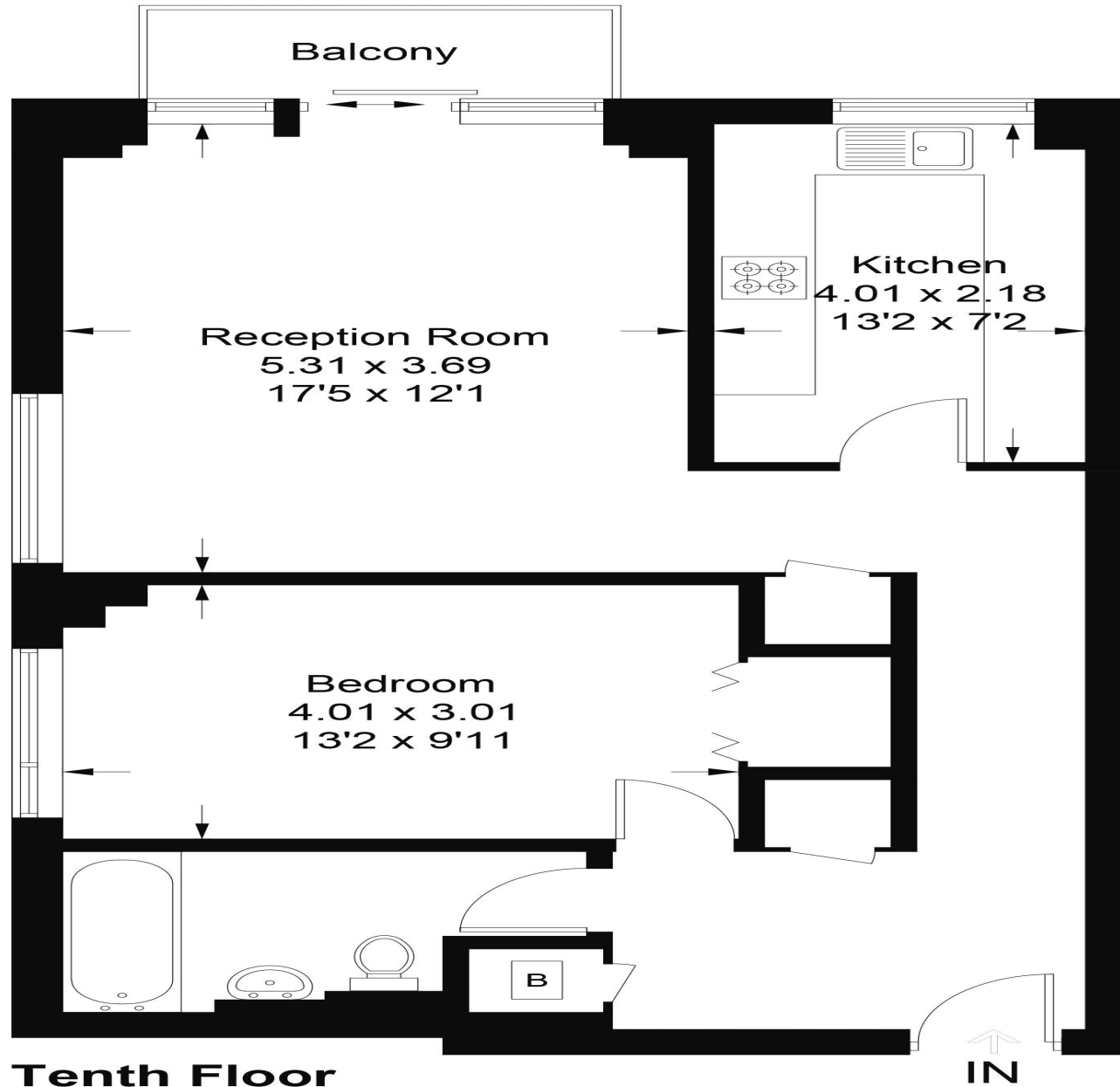
vitaproperties

VitaProperties

VitaProperties

# Buttermere Court, NW8

Approximate Gross Internal Area = 64.5 sq m / 694 sq ft



**Tenth Floor**

Illustration for identification purposes only, measurements are approximate, not to scale. floorplansUsketch.com © (ID739656)