



Belsize Lane, Belsize Village. London NW3. | £615

- Excellent Location
- Available Immediately
- Recently Refurbished
- 2 Bathrooms

- Spacious
- Unfurnished

"Vita Properties have been tremendously helpful throughout the process of securing/renting my flat. Informative about the property, prompt communication, easy to use dashboard for sharing of information, and pleasant to work with. Highly recommend!"

This two-bedroom, two-bathroom apartment located in the highly desirable Belsize Village offers an exceptional living experience.

The apartment boasts a spacious reception room that provides ample space for relaxation and entertainment. The apartment has been recently refurbished to a high standard and features modern fixtures and fittings, ensuring that residents can enjoy a comfortable and stylish living environment.

The apartment is located in an excellent location, just a stone's throw from Belsize Park Tube Station and the charming shops and cafes of Belsize Village. The property offers easy access to the amenities of both Hampstead and Swiss Cottage and is located within walking distance of some of London's most beautiful parks and green spaces.

The apartment comes fully equipped with all the necessary appliances ensuring that residents can move in and feel at home from day one.

This is an opportunity to live in a beautifully presented and thoughtfully designed apartment, in one of London's most sought-after

Available as soon as possible, this apartment is a must-see for anyone looking for a high-quality rental property in London.



Oliver Kent

✉ oliver.kent@vitaproperties.uk
☎ +4477 7274 0351



 Flat
 Under
Negotiation
 x 2
 x 1
 x 2



locations.

"I was very impressed with Vita and their network of buyers. When the sale of my flat fell through (twice) they worked extremely hard to find new buyers in a difficult market - thank you!"



"Working with Vita properties has been a smooth experience! No complaints at all. Our letting agent, Diana has been fantastic and very helpful throughout the whole process. I would highly recommend both Vita properties and Diana."



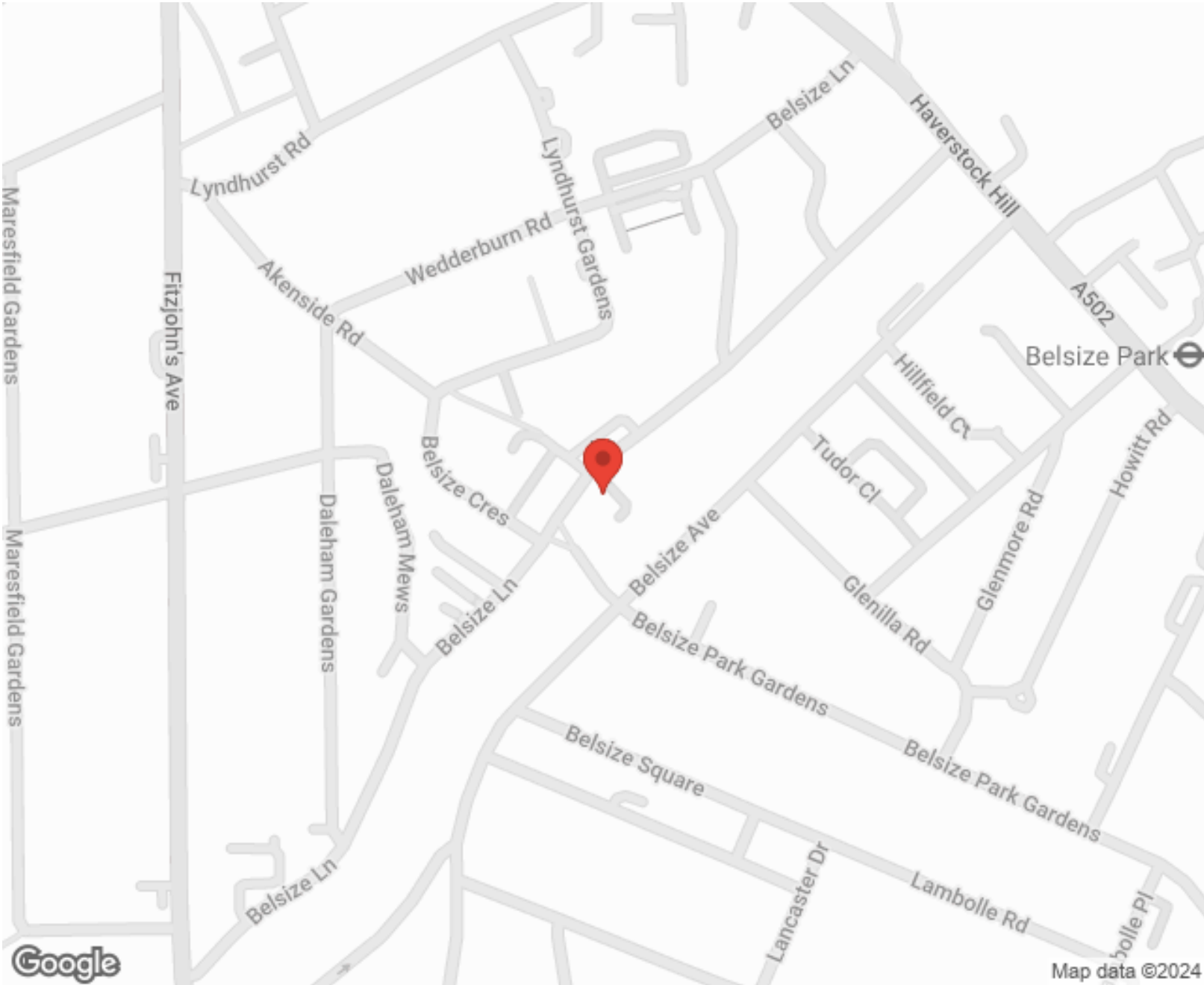
"I used Vita properties to find a flat recently and it was an overall professional, personalised and positive experience. Saira went the extra mile to accommodate to our needs and quick to help us whenever possible."



**MORE INFO, PICTURES,
CONTACT ON
OUR WEBSITE**



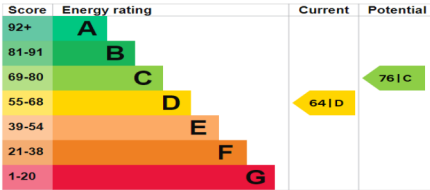
"Vita Properties is a very professional agency. My experience with them was incredible and the entire team was very helpful and kind throughout the renting process. I'd highly recommend!"



Energy efficiency rating for this property

This property's current energy rating is D. It has the potential to be C.

[See how to improve this property's energy performance.](#)



The graph shows this property's current and potential energy rating.

SCAN FOR MORE
GOOGLE REVIEWS



Google



4.9 Stars | 132 Reviews

Find us on social media



vitaproperties

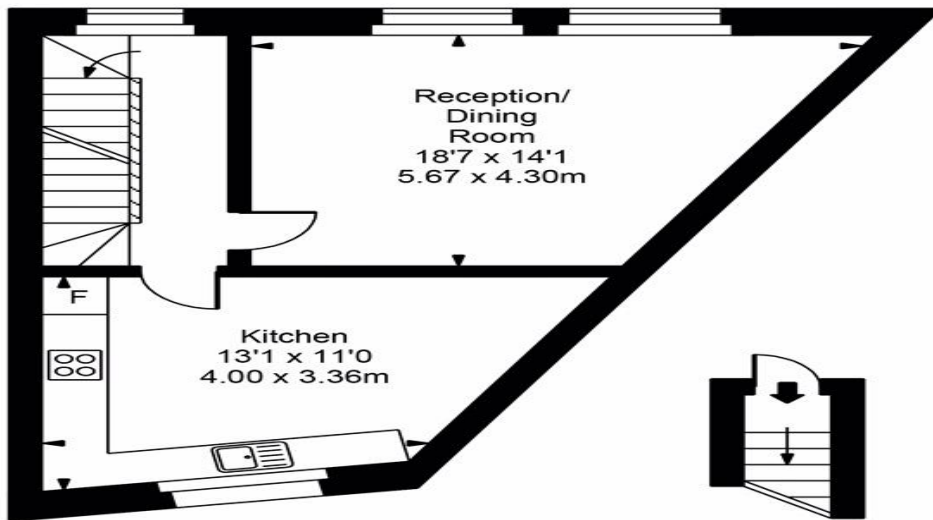
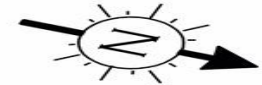


VitaProperties

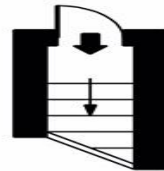


VitaProperties

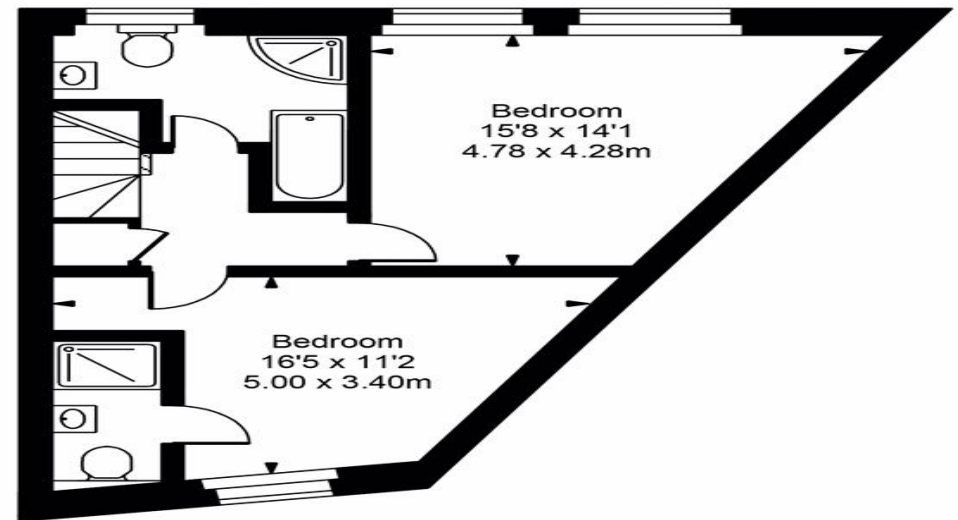
Belsize Lane



First Floor



Ground Floor
Entrance



Second Floor



Approx Gross Internal Area **930 Sq Ft - 86.44 Sq M**

For Illustration Purposes Only - Not To Scale
Floor plan by www.bestangle.co.uk