



## Portman Mansions, Chiltern Street, Marylebone, London W1U .| £1,150

- Residents Gym
- Moments to Marylebone
- Seconds to Baker Street
- Close to the open spaces of Regent's Park
- Modern Finish
- Available 14 April 2023

"Vita Properties have been tremendously helpful throughout the process of securing/renting my flat. Informative about the property, prompt communication, easy to use dashboard for sharing of information, and pleasant to work with. Highly recommend!"

Situated on the fourth floor of an impressive red brick mansion block with lift access, 24 hour concierge, residents' gym and secure bike storage area. Comprising of a dual aspect open plan reception room and fitted kitchen with built in dishwasher, washing machine, fridge and freezer. The principal bedroom has built in storage and en suite shower room, second bedroom and bathroom. Gas central heating and hot water is included in the service charge. Portman Mansions is an impressive Mansion block that also benefits from a 24-hour porter service, bicycle racks, an onsite gymnasium and sauna.

It is located on fashionable Chiltern Street, within easy reach of the boutique shops and restaurants of Marylebone High Street and the green, open spaces of Regent's Park





Flat



Available to Let



x 2



x 1



x 2





"I was very impressed with Vita and their network of buyers. When the sale of my flat fell through (twice) they worked extremely hard to find new buyers in a difficult market - thank you!"

---



"Working with Vita properties has been a smooth experience! No complaints at all. Our letting agent, Diana has been fantastic and very helpful throughout the whole process. I would highly recommend both Vita properties and Diana."

---





"I used Vita properties to find a flat recently and it was an overall professional, personalised and positive experience. Saira went the extra mile to accommodate to our needs and quick to help us whenever possible."

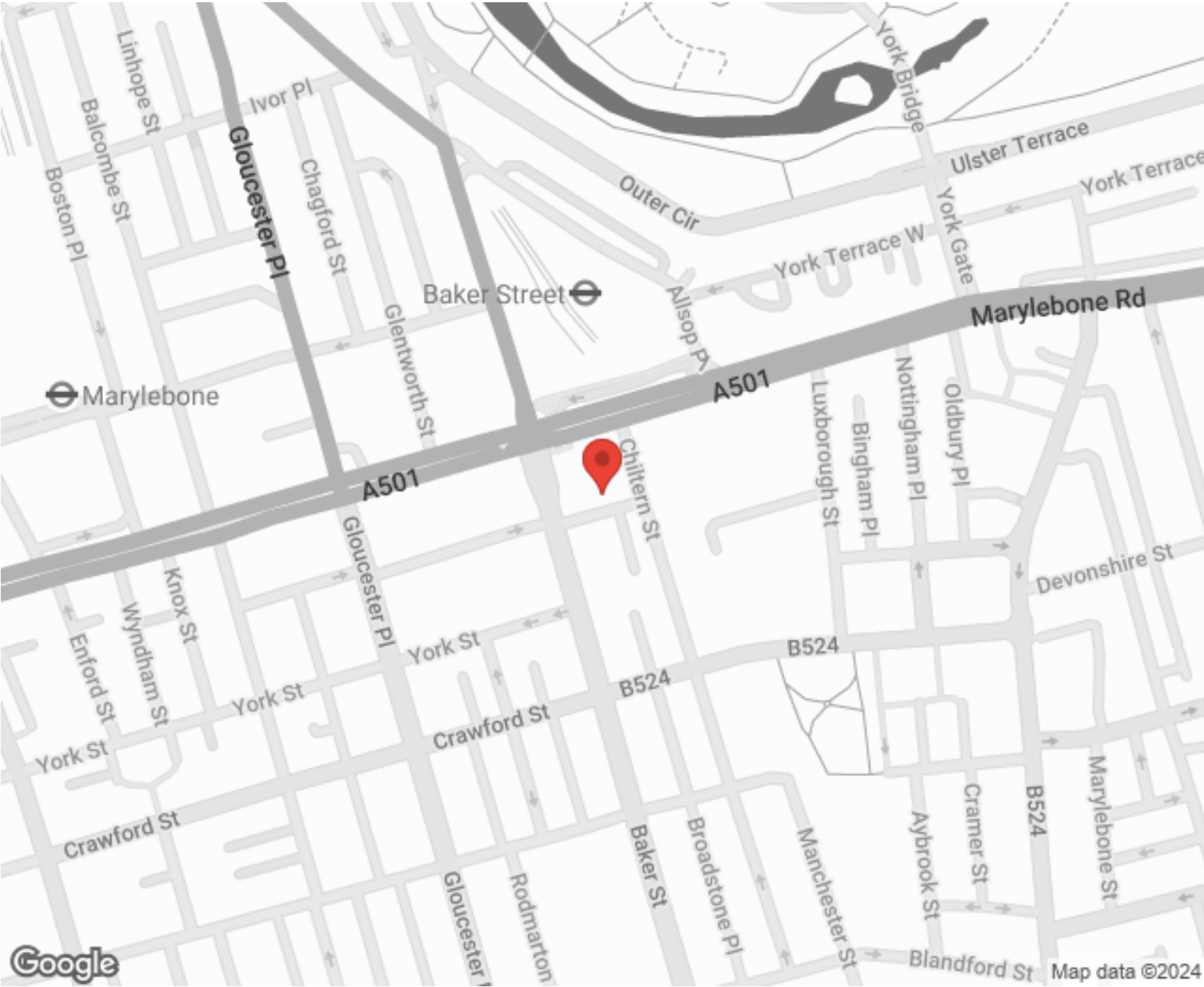
---



**MORE INFO, PICTURES,  
CONTACT ON  
OUR WEBSITE**



"Vita Properties is a very professional agency. My experience with them was incredible and the entire team was very helpful and kind throughout the renting process. I'd highly recommend!"



| Score | Energy rating | Current | Potential |
|-------|---------------|---------|-----------|
| 92+   | A             |         |           |
| 81-91 | B             |         |           |
| 69-80 | C             |         | 75   C    |
| 55-68 | D             |         |           |
| 39-54 | E             | 48   E  |           |
| 21-38 | F             |         |           |
| 1-20  | G             |         |           |

SCAN FOR MORE  
GOOGLE REVIEWS

Google  
★★★★★  
4.9 Stars | 132 Reviews

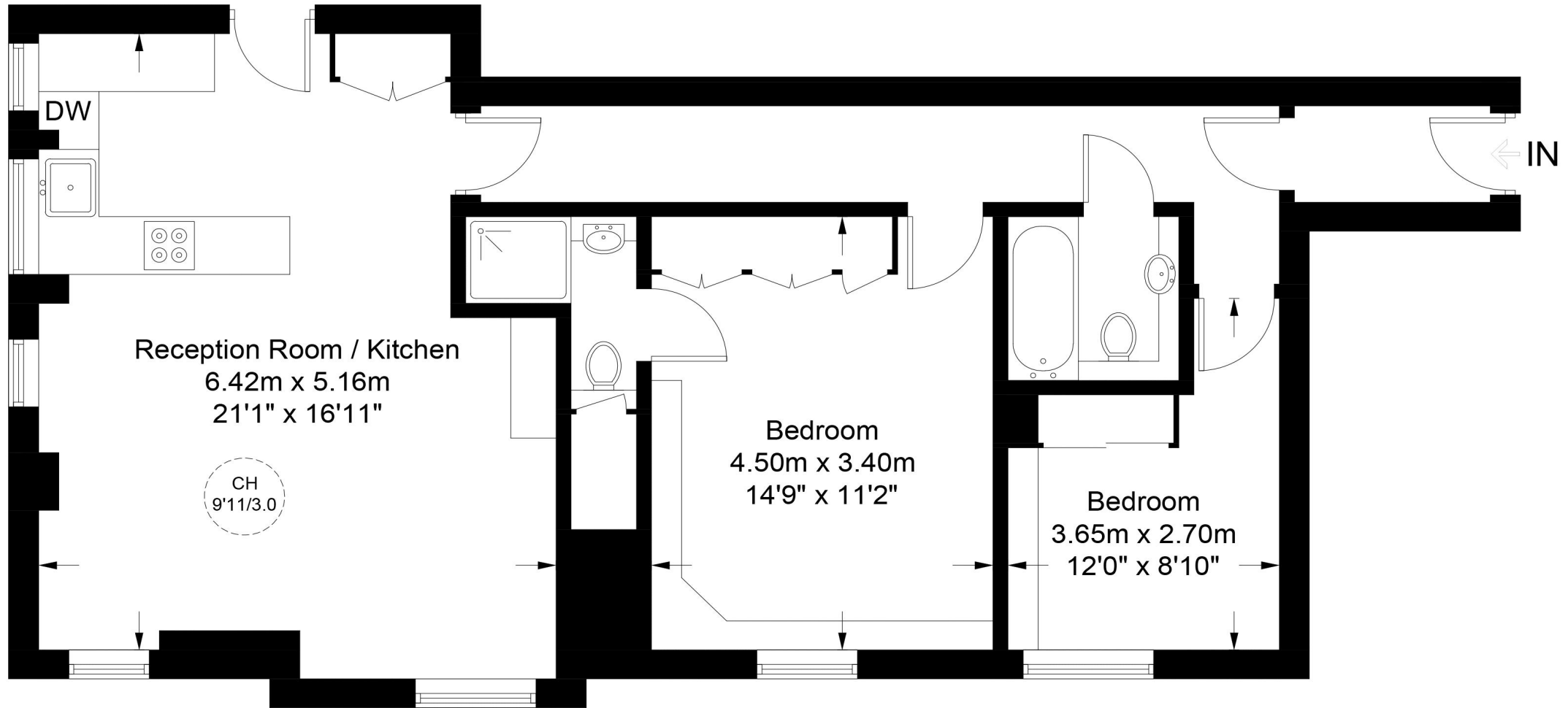
Find us on social media

vitaproperties  
 VitaProperties  
 VitaProperties



# Portman Mansions, W1U

Approximate Gross Internal Area = 818 sq ft / 76.0 sq m



## Fourth Floor



**Certified  
Property  
Measurer**

This plan is for layout guidance only. Not drawn to scale unless stated. Windows and door openings are approximate. Whilst every care is taken in the preparation of this plan, please check all dimensions, shapes and compass bearings before making any decisions reliant upon them. (ID947178)