



Belsize Park Gardens, Belsize Park, London, NW3 - Garden Flat | £2,750,000

- Modern
- Fitted Granite Kitchen
- Conservatory
- Private Gardens

- Moments to Belsize Tube and Shops
- Chain Free

"Vita Properties have been tremendously helpful throughout the process of securing/renting my flat. Informative about the property, prompt communication, easy to use dashboard for sharing of information, and pleasant to work with. Highly recommend!"

A modern and spacious three bedroom garden apartment situated in this well presented white stucco fronted period conversion in the heart of Belsize Park. Boasting a bright and airy reception room and a modern fully integrated kitchen with granite surfaces and adjoining conservatory. Further benefits include two bathrooms (one en-suite), am large private garden, a guest w/c and a utility room. Ideally located for all the popular restaurants and cafes on Englands Lane and the transport links of Swiss Cottage & Belsize Park.

-  Flat
-  Unknown
-  x 3
-  x 1
-  x 2



Oliver Kent

 oliver.kent@vitaproperties.uk

 +4477 7274 0351



"I was very impressed with Vita and their network of buyers. When the sale of my flat fell through (twice) they worked extremely hard to find new buyers in a difficult market - thank you!"



"Working with Vita properties has been a smooth experience! No complaints at all. Our letting agent, Diana has been fantastic and very helpful throughout the whole process. I would highly recommend both Vita properties and Diana."



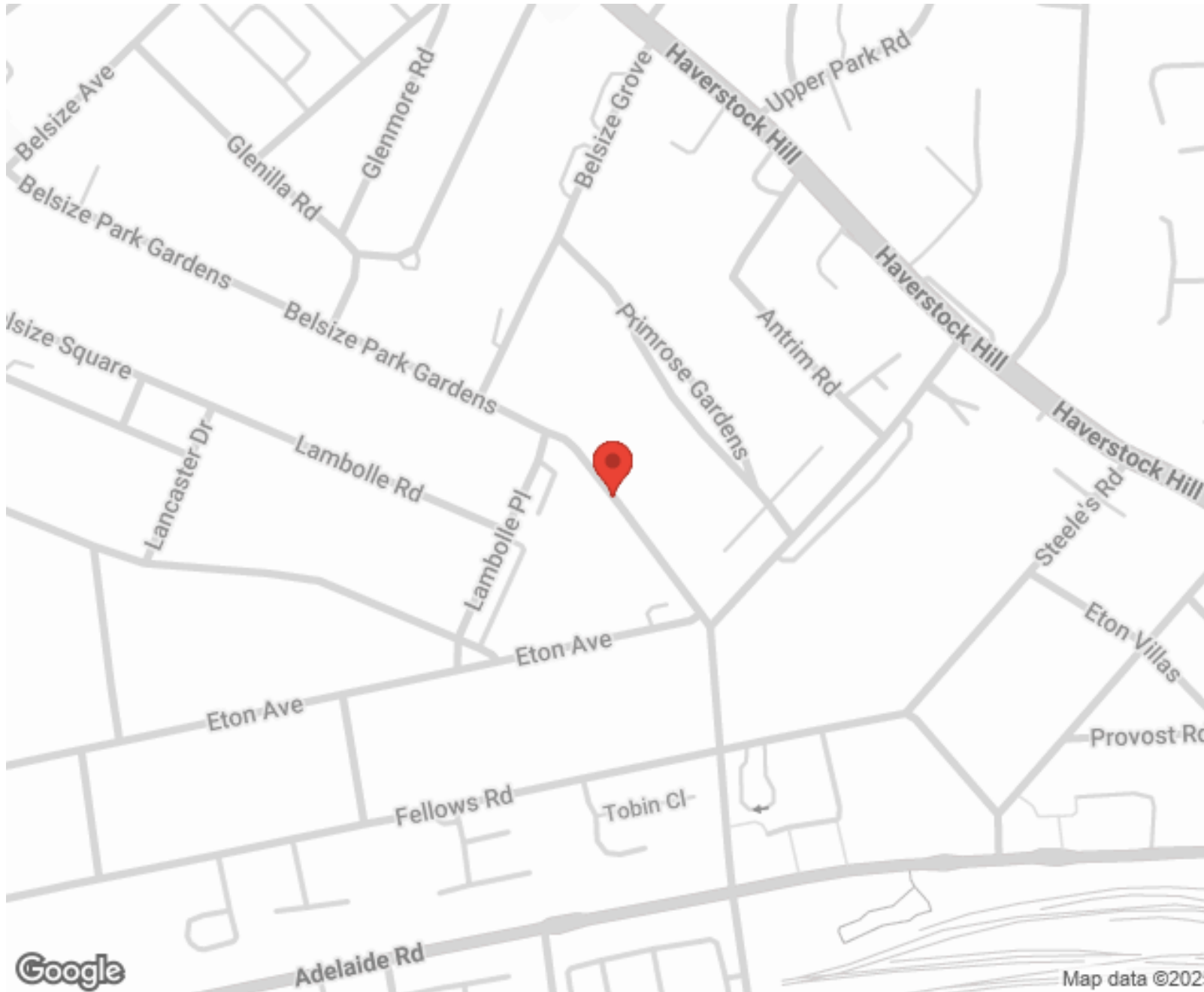
"I used Vita properties to find a flat recently and it was an overall professional, personalised and positive experience. Saira went the extra mile to accommodate to our needs and quick to help us whenever possible."



**MORE INFO, PICTURES,
CONTACT ON
OUR WEBSITE**



"Vita Properties is a very professional agency. My experience with them was incredible and the entire team was very helpful and kind throughout the renting process. I'd highly recommend!"



SCAN FOR MORE
GOOGLE REVIEWS



Google



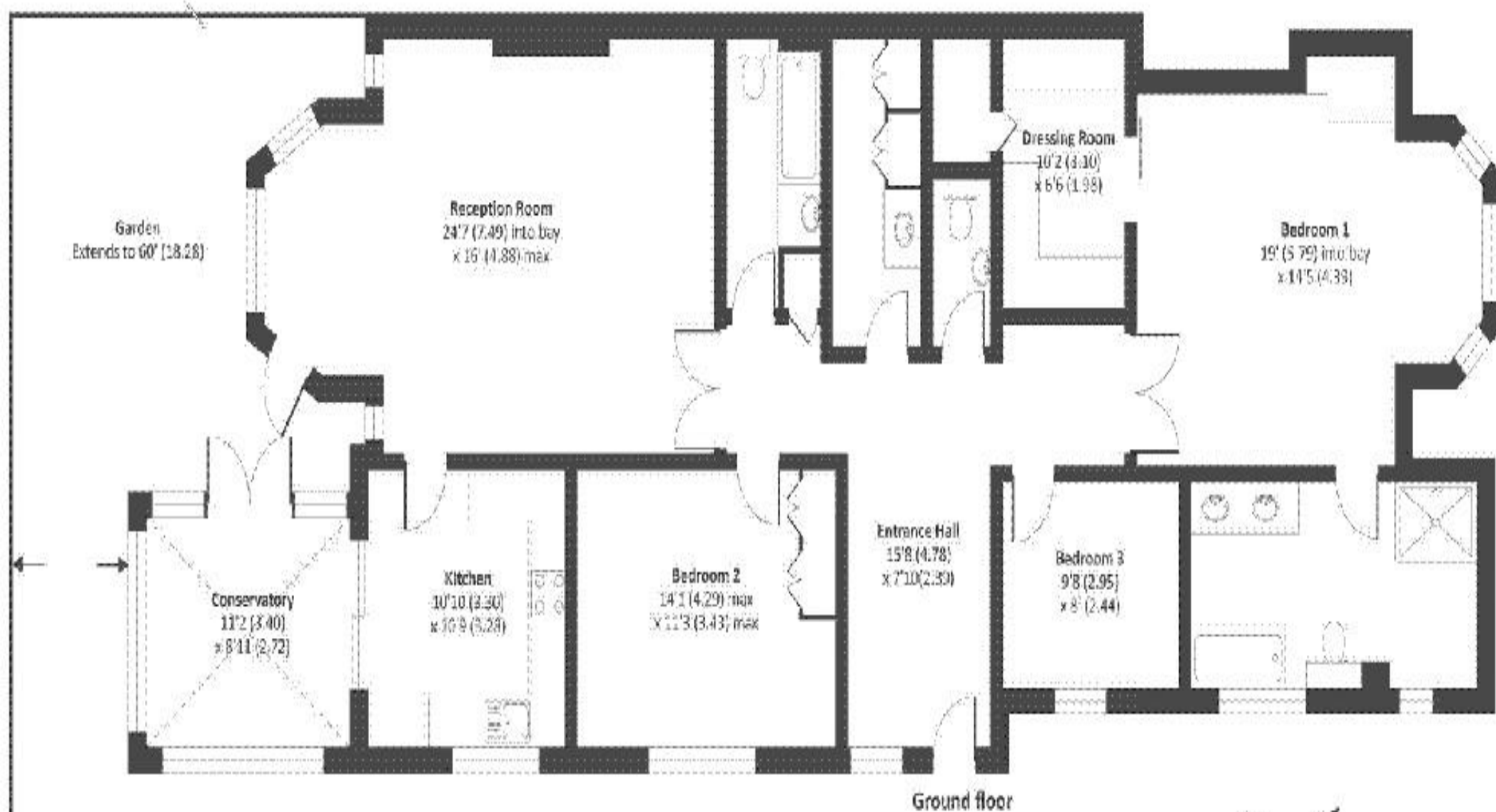
4.9 Stars | 132 Reviews

Find us on social media

 vitaproperties

 VitaProperties

 VitaProperties



Approx. gross internal floor area 1701 SQFT / 158 SQM

