



St Johns Wood Terrace, St Johns Wood, London NW8 .| £3,250

- Family House
- Fully Fitted Separate Kitchen
- Landscaped Front and Rear Gardens
- Excellent Location

- Modern
- Available immediately

"Vita Properties have been tremendously helpful throughout the process of securing/renting my flat. Informative about the property, prompt communication, easy to use dashboard for sharing of information, and pleasant to work with. Highly recommend!"

This fantastic house for rent in St John's Wood, London is a real gem!

It has been refurbished to the highest standard, combining modern and traditional features for an elegant look.

The house is arranged mainly over three floors, with a large main bedroom with en suite bathroom, three further double bedrooms and two family bathrooms.

The split level reception room and generous dining area is open plan to the kitchen, making it perfect for entertaining. Furthermore, original period features add to the charm of this excellent property.

Ideally situated for the shops, cafes and Underground Station of St John's Wood (Jubilee Line) and within close proximity of The American School in London.



Oliver Kent

✉ oliver.kent@vitaproperties.uk
☎ +4477 7274 0351



🏠 House
🔑 Available
to Let
🛏 x 4
🛋 x 2
🚿 x 3

SCAN FOR
A VIDEO
WALKTHROUGH



"I was very impressed with Vita and their network of buyers. When the sale of my flat fell through (twice) they worked extremely hard to find new buyers in a difficult market - thank you!"



"Working with Vita properties has been a smooth experience! No complaints at all. Our letting agent, Diana has been fantastic and very helpful throughout the whole process. I would highly recommend both Vita properties and Diana."



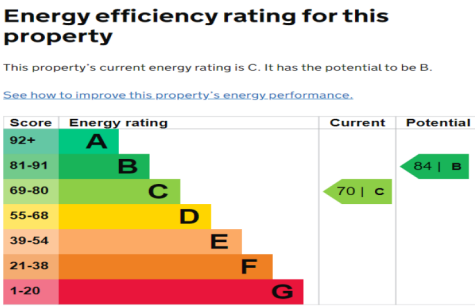
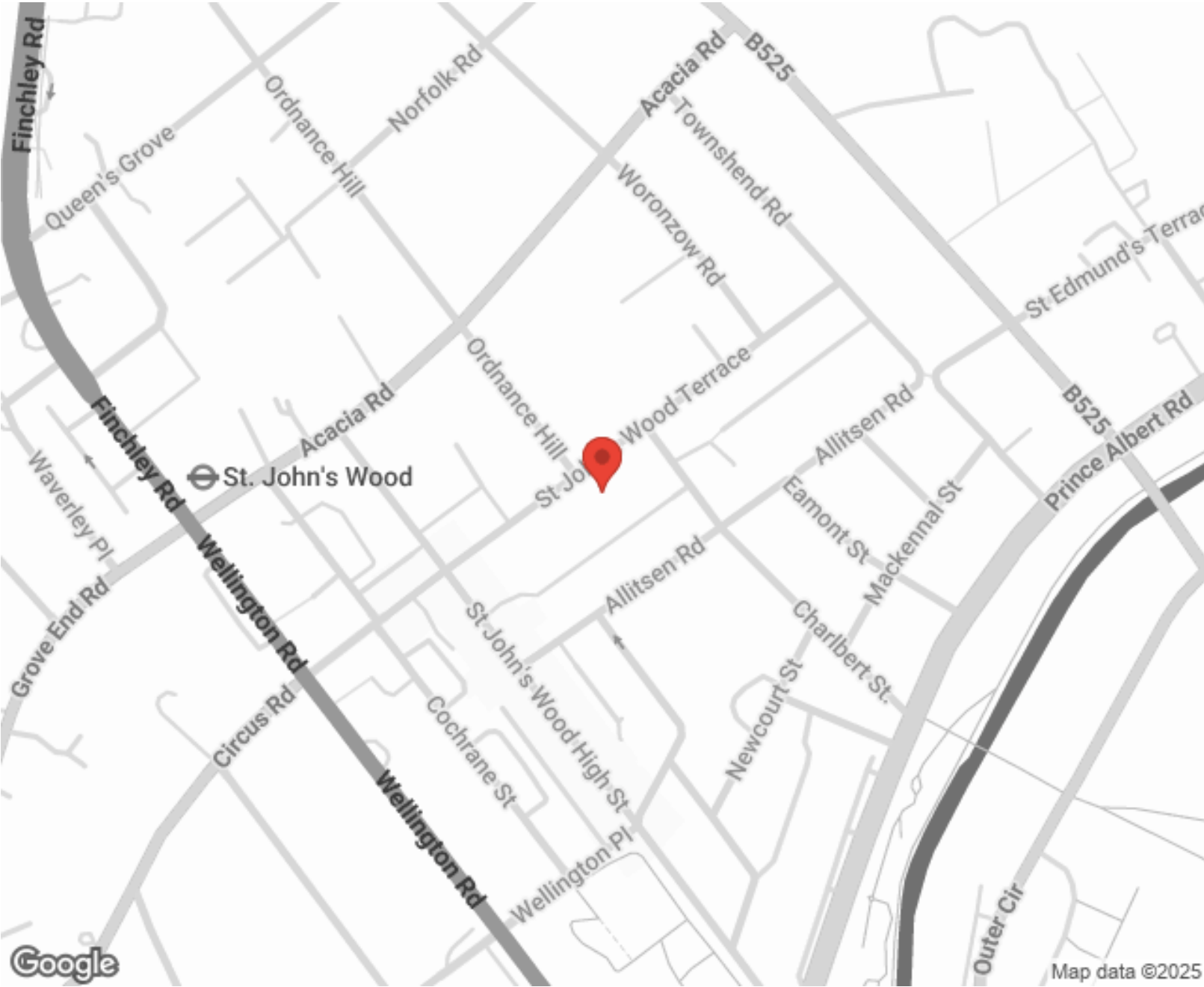
"I used Vita properties to find a flat recently and it was an overall professional, personalised and positive experience. Saira went the extra mile to accommodate to our needs and quick to help us whenever possible."



**MORE INFO, PICTURES,
CONTACT ON
OUR WEBSITE**



"Vita Properties is a very professional agency. My experience with them was incredible and the entire team was very helpful and kind throughout the renting process. I'd highly recommend!"






The graph shows this property's current and potential energy efficiency.

SCAN FOR MORE
GOOGLE REVIEWS



Google
★★★★★
4.9 Stars | 132 Reviews

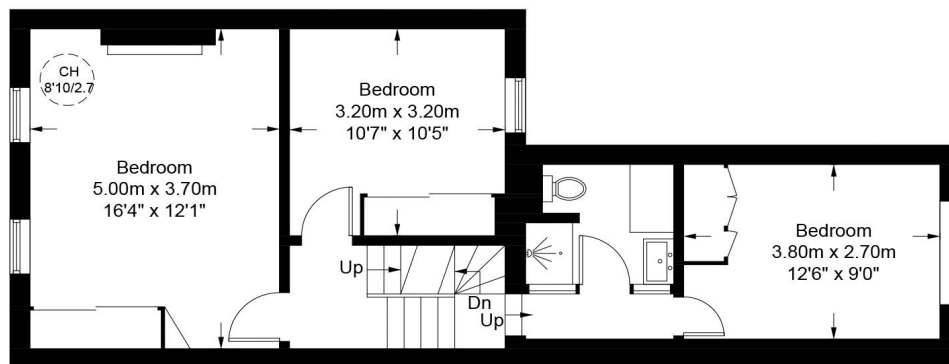
Find us on social media

-  vitaproperties
-  VitaProperties
-  VitaProperties

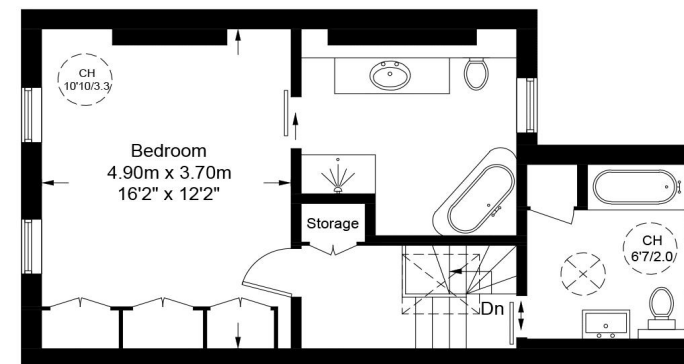


St. Johns Wood Terrace, NW8

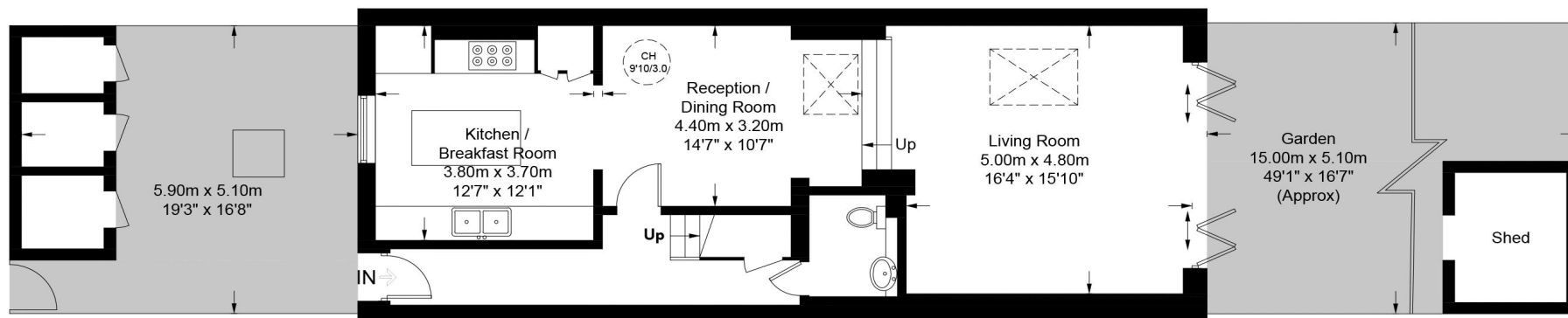
Approximate Gross Internal Area = 1732 sq ft / 160.9 sq m



First Floor



Second Floor



Ground Floor



**Certified
Property
Measurer**

This plan is for layout guidance only. Not drawn to scale unless stated. Windows and door openings are approximate. Whilst every care is taken in the preparation of this plan, please check all dimensions, shapes and compass bearings before making any decisions reliant upon them. (ID942260)