



Eyre Court, Finchley Road, London NW8 .| £1,850,000

- Three Bedrooms
- Two Bathrooms
- Reception Room
- Communal Heating & Hot Water

- Dining Room
- Utility Room
- Off Street Parking
- 24hr Porter

"Vita Properties have been tremendously helpful throughout the process of securing/renting my flat. Informative about the property, prompt communication, easy to use dashboard for sharing of information, and pleasant to work with. Highly recommend!"

Situated on the ground floor of this highly sought after purpose built portered building is this three bedroom, three bathroom apartment which is located on Finchley Road, accessed from a carriage drive opposite St John's Wood Underground Station (Jubilee line). The accommodation comprises a recently refurbished kitchen, spacious reception room, dining room and utility room. The apartment also benefits from a share of freehold, communal garden, 24 hour porter, communal heating and hot water, and off street parking on a first come first served basis. Eyre Court is conveniently located 0.2 miles from the amenities and cafe's of St Johns Wood High Street. St Johns Wood underground station (Jubilee Line) is 0.1 miles from the property which provides access to the West End and Canary Wharf.

🏠 Flat
🔑 Share of
Freehold
🛏 x 3
🚿 x 2
🚗 x 3

SCAN FOR
A VIDEO
WALKTHROUGH



Jonathan Singer

✉ jonathan.singer@vitaproperties.uk
☎ +4478 8428 6414



"I was very impressed with Vita and their network of buyers. When the sale of my flat fell through (twice) they worked extremely hard to find new buyers in a difficult market - thank you!"



"Working with Vita properties has been a smooth experience! No complaints at all. Our letting agent, Diana has been fantastic and very helpful throughout the whole process. I would highly recommend both Vita properties and Diana."



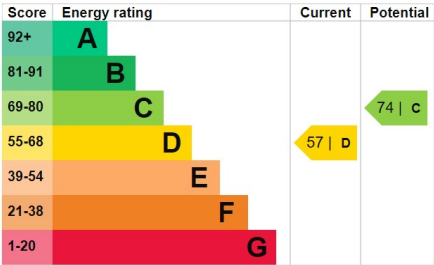
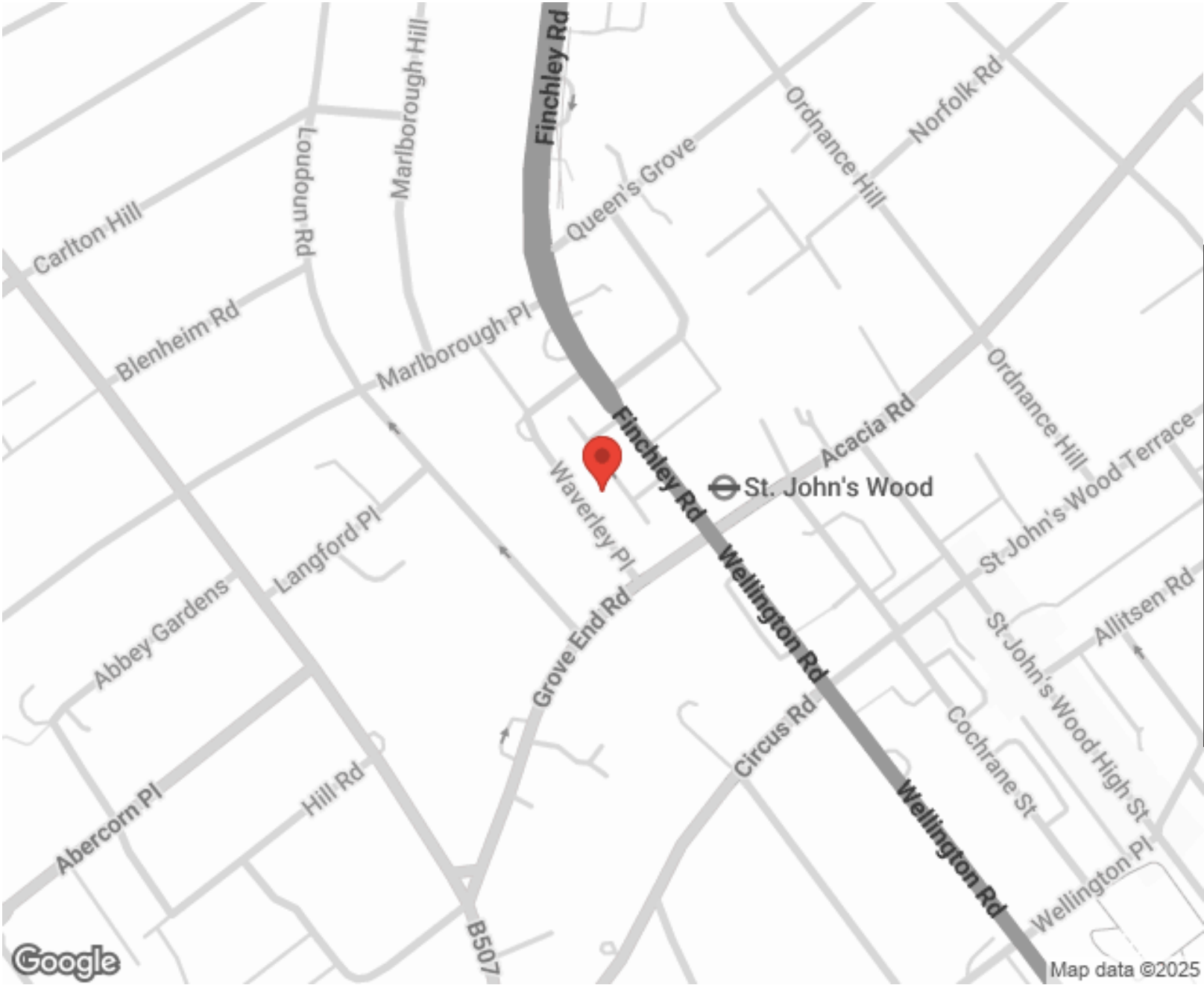
"I used Vita properties to find a flat recently and it was an overall professional, personalised and positive experience. Saira went the extra mile to accommodate to our needs and quick to help us whenever possible."



**MORE INFO, PICTURES,
CONTACT ON
OUR WEBSITE**



"Vita Properties is a very professional agency. My experience with them was incredible and the entire team was very helpful and kind throughout the renting process. I'd highly recommend!"



The graph shows this property's current and potential energy efficiency.

SCAN FOR MORE
GOOGLE REVIEWS






Google



4.9 Stars | 132 Reviews

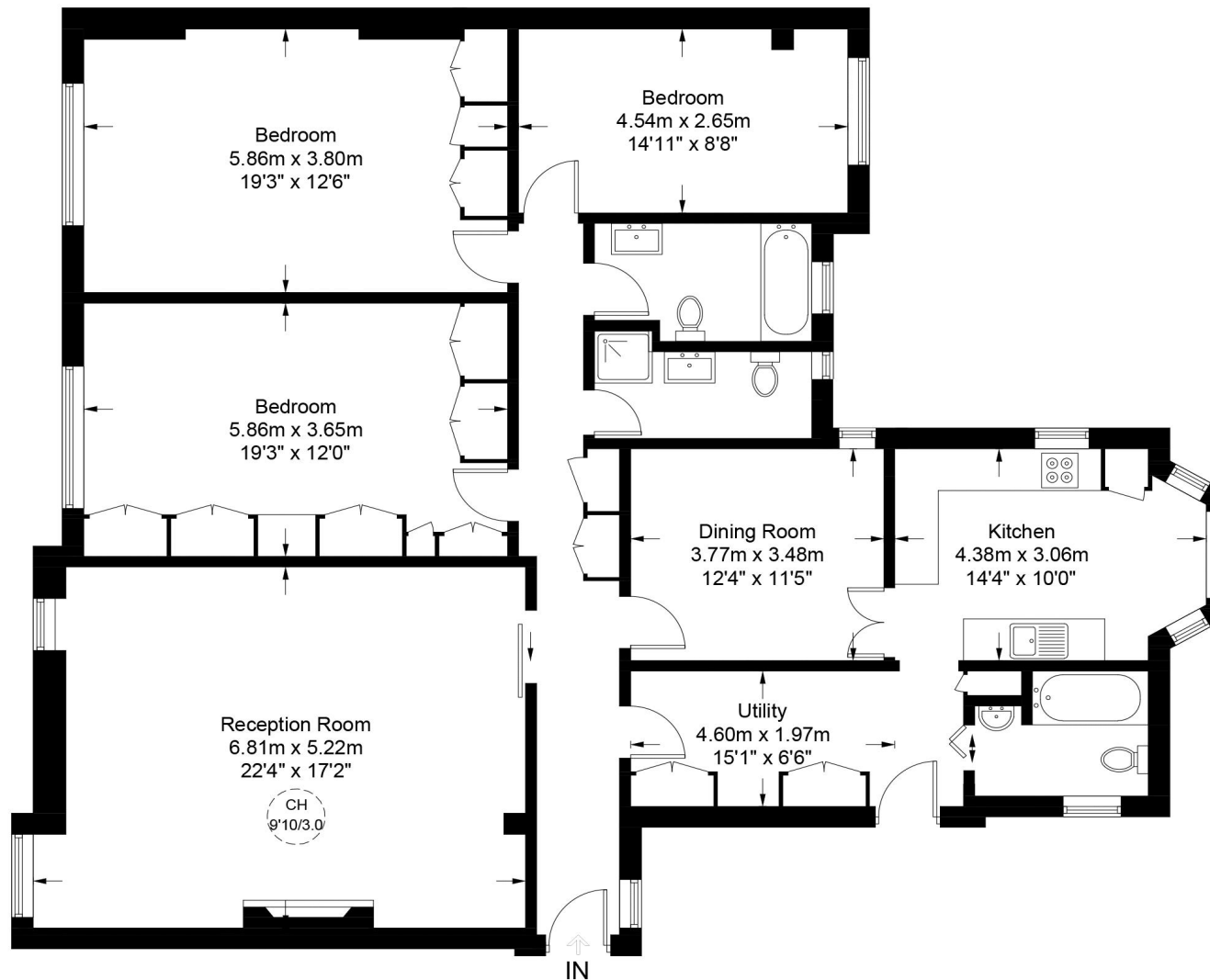
Find us on social media

-  vitaproperties
-  VitaProperties
-  VitaProperties



Eyre Court ,NW8

Approximate Gross Internal Area = 1674 sq ft / 155.5 sq m



Ground Floor



**Certified
Property
Measurer**

This plan is for layout guidance only. Not drawn to scale unless stated. Windows and door openings are approximate. Whilst every care is taken in the preparation of this plan, please check all dimensions, shapes and compass bearings before making any decisions reliant upon them. (ID927225)