



"Vita Properties have been tremendously helpful throughout the process of securing/renting my flat. Informative about the property, prompt communication, easy to use dashboard for sharing of information, and pleasant to work with. Highly recommend!"

Recently refurbished and very well presented two bedroom flat in West Hampstead set on the first floor of this impressive double fronted period building. Comprising of a reception room, a fitted kitchen with high ceilings, 2 bedrooms, 2 bathrooms (One En-suite) and is within easy walking distance to local amenities of Finchley Road.

Ideal for easy access for Swiss Cottage, West Hampstead and Finchley Road stations.



Oliver Kent

✉ oliver.kent@vitaproperties.uk

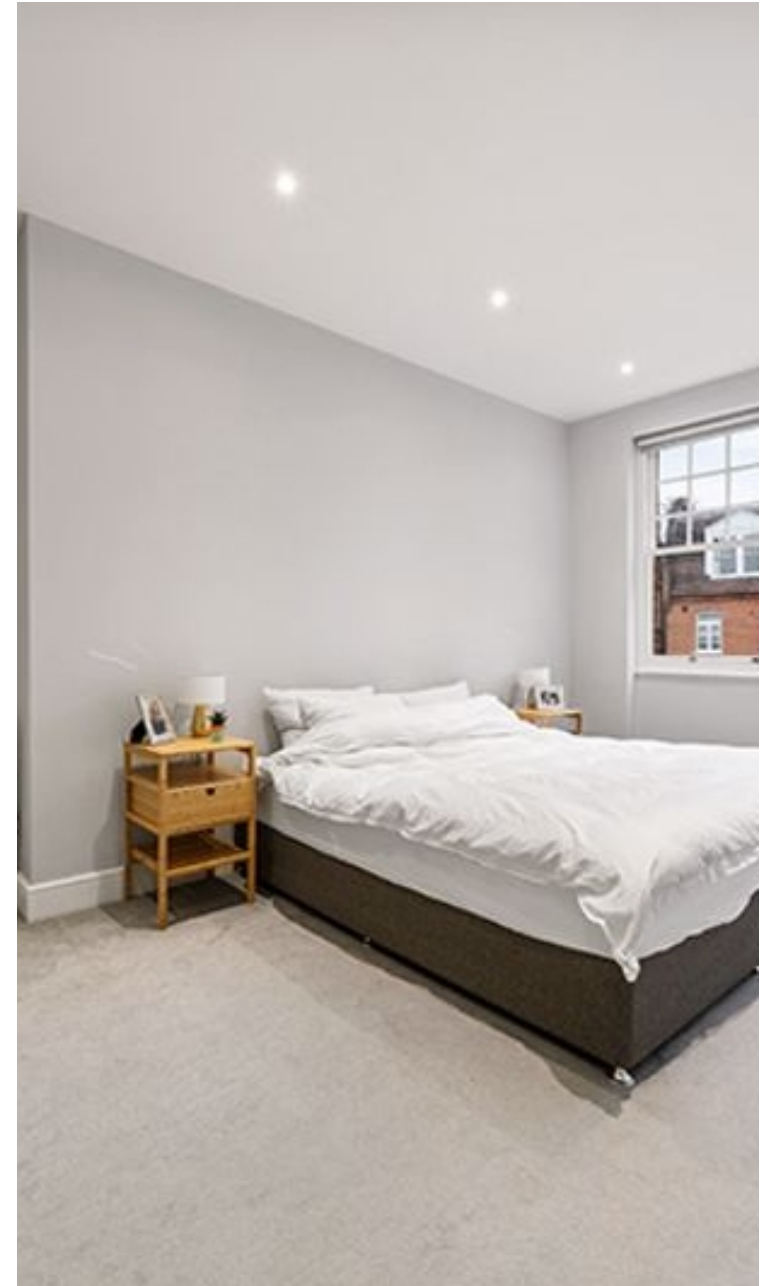
☎ +4477 7274 0351



🏠 Flat
🔑 Available
to Let
🛏 x 2
🛎 x 1
🚿 x 2



"I was very impressed with Vita and their network of buyers. When the sale of my flat fell through (twice) they worked extremely hard to find new buyers in a difficult market - thank you!"



"Working with Vita properties has been a smooth experience! No complaints at all. Our letting agent, Diana has been fantastic and very helpful throughout the whole process. I would highly recommend both Vita properties and Diana."



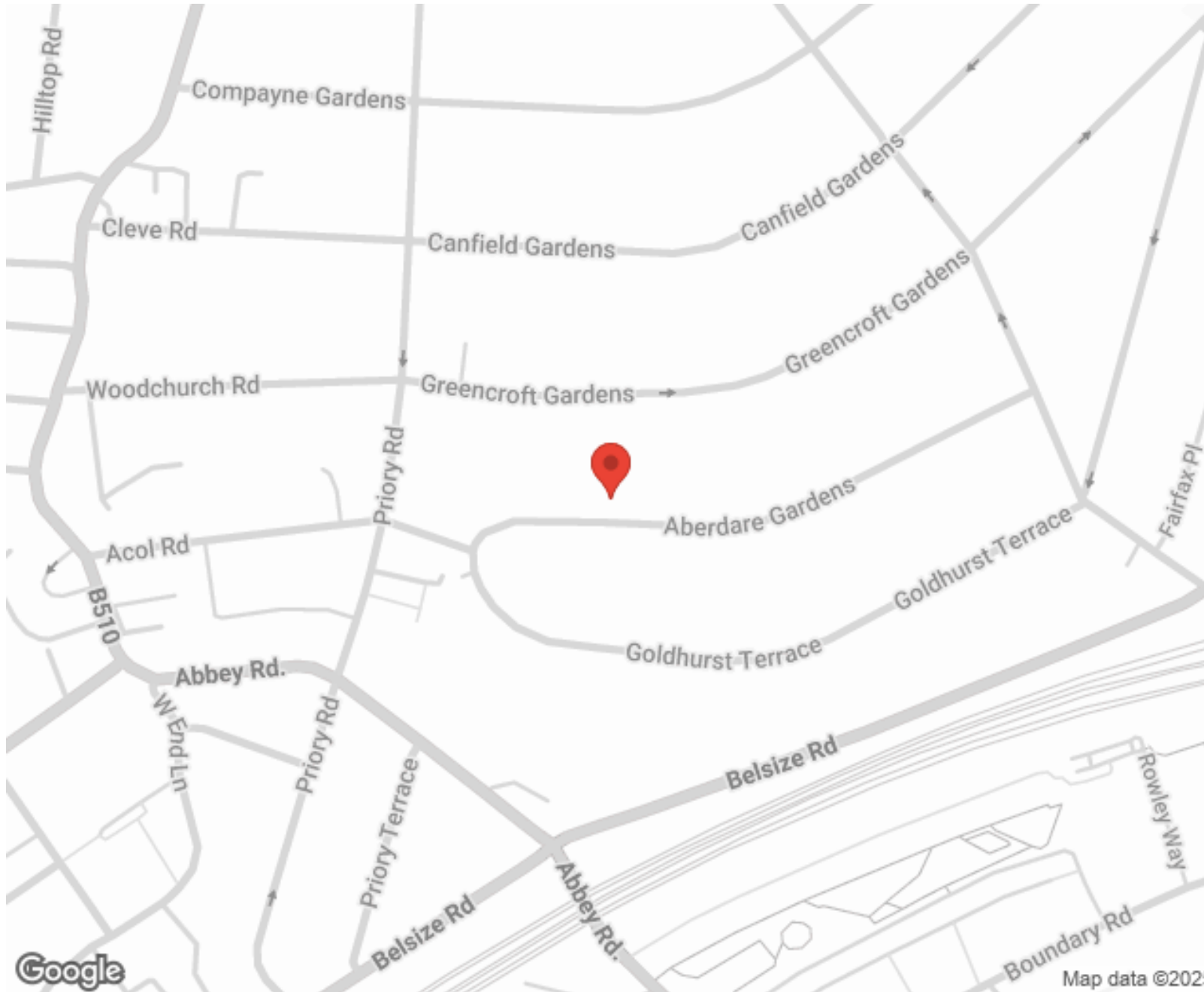
"I used Vita properties to find a flat recently and it was an overall professional, personalised and positive experience. Saira went the extra mile to accommodate to our needs and quick to help us whenever possible."



MORE INFO, PICTURES,
CONTACT ON
OUR WEBSITE



"Vita Properties is a very professional agency. My experience with them was incredible and the entire team was very helpful and kind throughout the renting process. I'd highly recommend!"



SCAN FOR MORE
GOOGLE REVIEWS

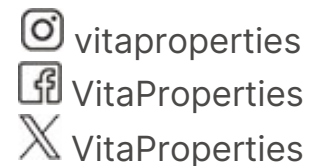


Google



4.9 Stars | 132 Reviews

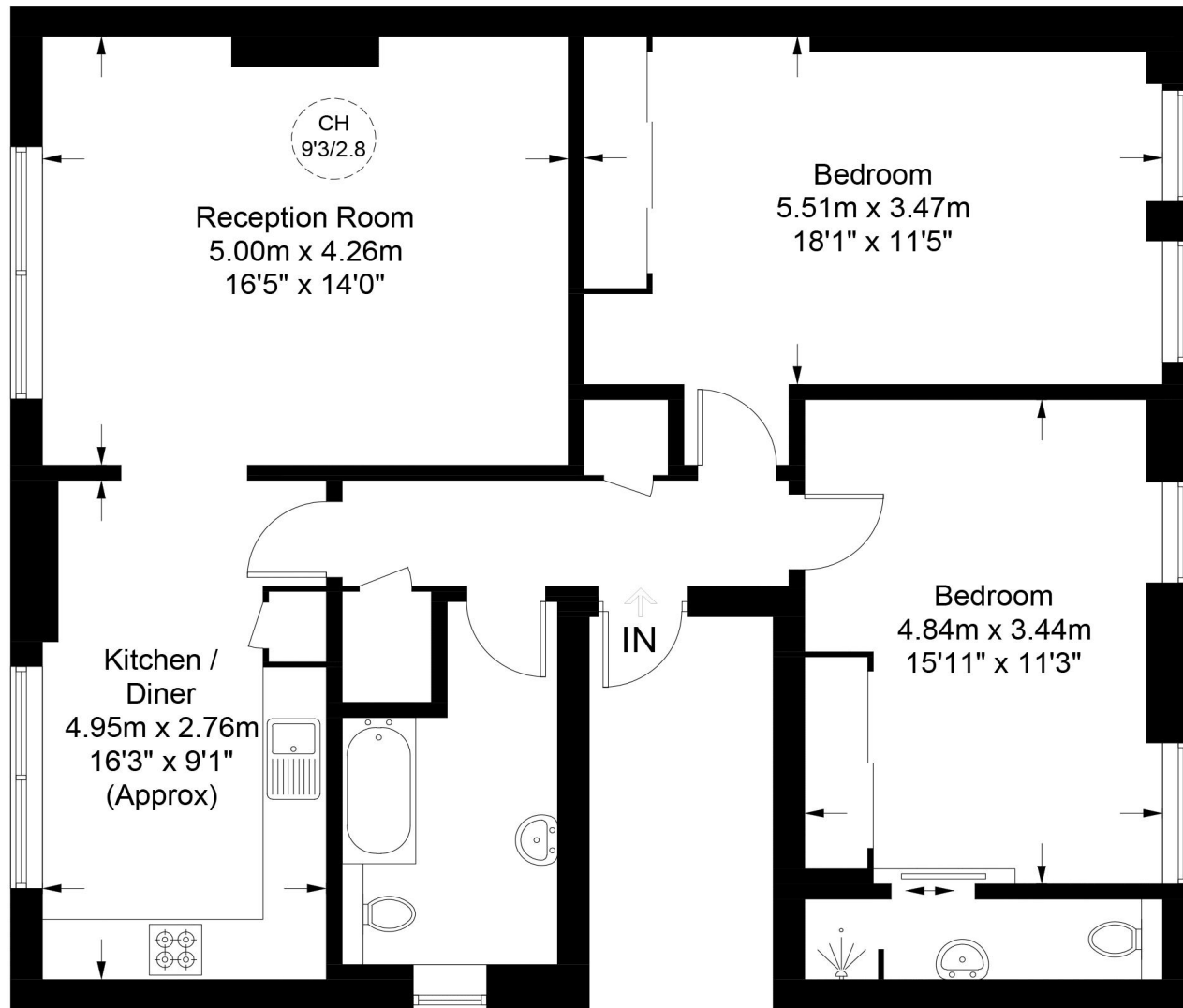
Find us on social media





Aberdare Gardens, NW6

Approximate Gross Internal Area = 971 sq ft / 90.2 sq m



First Floor

This plan is for layout guidance only. Not drawn to scale unless stated. Windows and door openings are approximate. Whilst every care is taken in the preparation of this plan, please check all dimensions, shapes and compass bearings before making any decisions reliant upon them. (ID818139)