



Grosvenor Hill Mayfair W1K .| £1,250

- Central location
- Private building
- CCTV
- Super fast broadband included






- Professionally managed
- Available 5th December 2022

"Vita Properties have been tremendously helpful throughout the process of securing/renting my flat. Informative about the property, prompt communication, easy to use dashboard for sharing of information, and pleasant to work with. Highly recommend!"

Available 5th December 2022 - A magnificent First-floor apartment set within a private block consisting of four apartments has been individually designed with the highest specification allowing for space set in the heart of Mayfair giving access to designer shops, high-end cafés, and restaurants with Bond Street, Oxford Street, and Berkeley Square within walking distance along with associated transport facilities. Bond Street and Green Park Underground stations are located within a 10-minute walk of the apartment.

The apartment comprises a double bedroom with an en-suite bathroom and separate guest Shower room, reception room, a stunning fitted kitchen breakfast room. with wood flooring to the reception room, hallway and kitchen


The Royal Parks of Green Park and Hyde Park are a short stroll away along with Underground stations include Bond Street and Green Park. This fabulous apartment makes a fantastic central London base for the enthusiastic shopper or a perfect Pied-à-Terre.

 Flat  
 Available  
to Let  
 x 1  
 x 1  
 x 2

SCAN FOR  
A VIDEO  
WALKTHROUGH



Oliver Kent

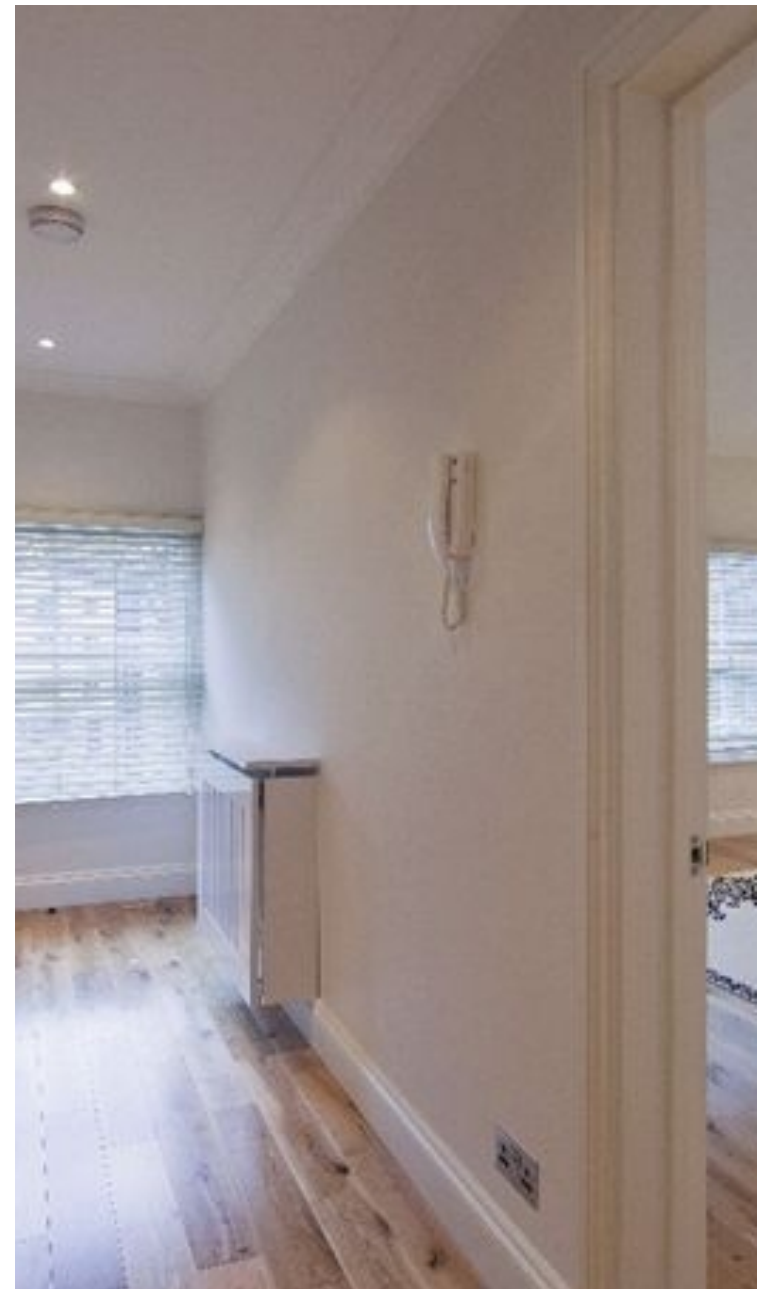
 [oliver.kent@vitaproperties.uk](mailto:oliver.kent@vitaproperties.uk)  
 +4477 7274 0351





"I was very impressed with Vita and their network of buyers. When the sale of my flat fell through (twice) they worked extremely hard to find new buyers in a difficult market - thank you!"

---



"Working with Vita properties has been a smooth experience! No complaints at all. Our letting agent, Diana has been fantastic and very helpful throughout the whole process. I would highly recommend both Vita properties and Diana."

---



"I used Vita properties to find a flat recently and it was an overall professional, personalised and positive experience. Saira went the extra mile to accommodate to our needs and quick to help us whenever possible."

---

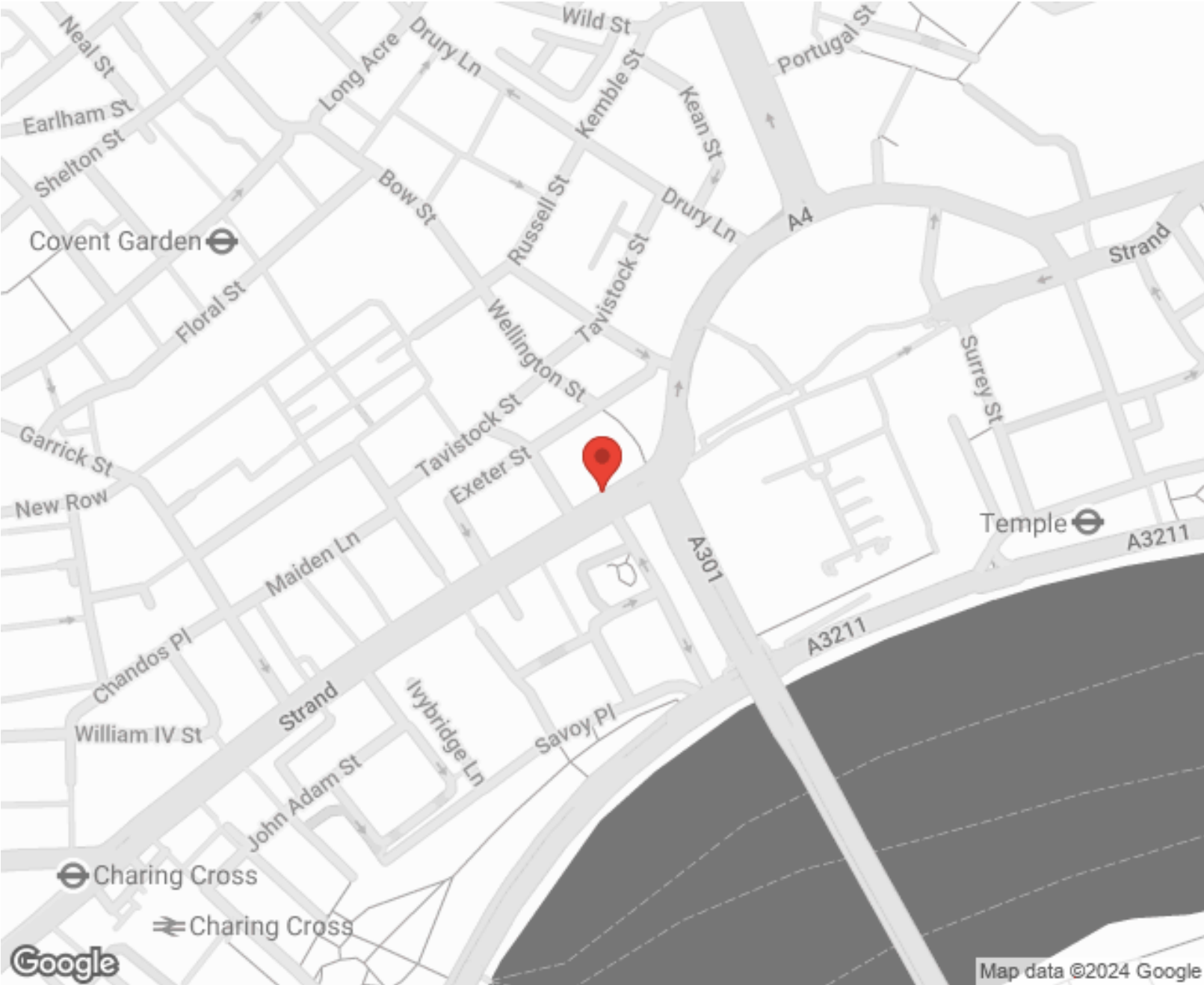


**MORE INFO, PICTURES,  
CONTACT ON  
OUR WEBSITE**





"Vita Properties is a very professional agency. My experience with them was incredible and the entire team was very helpful and kind throughout the renting process. I'd highly recommend!"



Score	Energy rating	Current	Potential
92+	A		
81-91	B		87   B
69-80	C	80   C	
55-68	D		
39-54	E		
21-38	F		
1-20	G		

SCAN FOR MORE  
GOOGLE REVIEWS

Google  
★★★★★  
4.9 Stars | 132 Reviews

Find us on social media

vitaproperties

VitaProperties

VitaProperties

**FLAT 2,  
9 - 10 GROSVENOR HILL,  
Approx. Gross Internal Area \*  
819 Ft<sup>2</sup> - 76.09 M<sup>2</sup>**

*Illustration For Identification Purposes Only. Not to Scale  
\* As Defined by RICS - Code of Measuring Practice*



**SECOND FLOOR**