



Mozart Street, Maida Vale, London W10 .| £450,000

- Located Moments to Shops and Transport
- Private Entrance
- Open Plan Kitchen and Reception
- Modern

- Long Lease
- Close to Parks

"Vita Properties have been tremendously helpful throughout the process of securing/renting my flat. Informative about the property, prompt communication, easy to use dashboard for sharing of information, and pleasant to work with. Highly recommend!"

Situated on a quiet residential street, this wonderful two bedroom maisonette offers excellent open plan accommodation and is within close proximity to a host of amenities in Maida Vale and St John's Wood.


Located on Mozart Street, the property is moments from local shops and amenities, whilst a wide selection of shops, bars and restaurants can be found close by both on Salusbury Road and Harrow Road. Transport links include Queen's Park Station.





Oliver Kent


✉ oliver.kent@vitaproperties.uk
☎ +4477 7274 0351




 Flat

 Leasehold

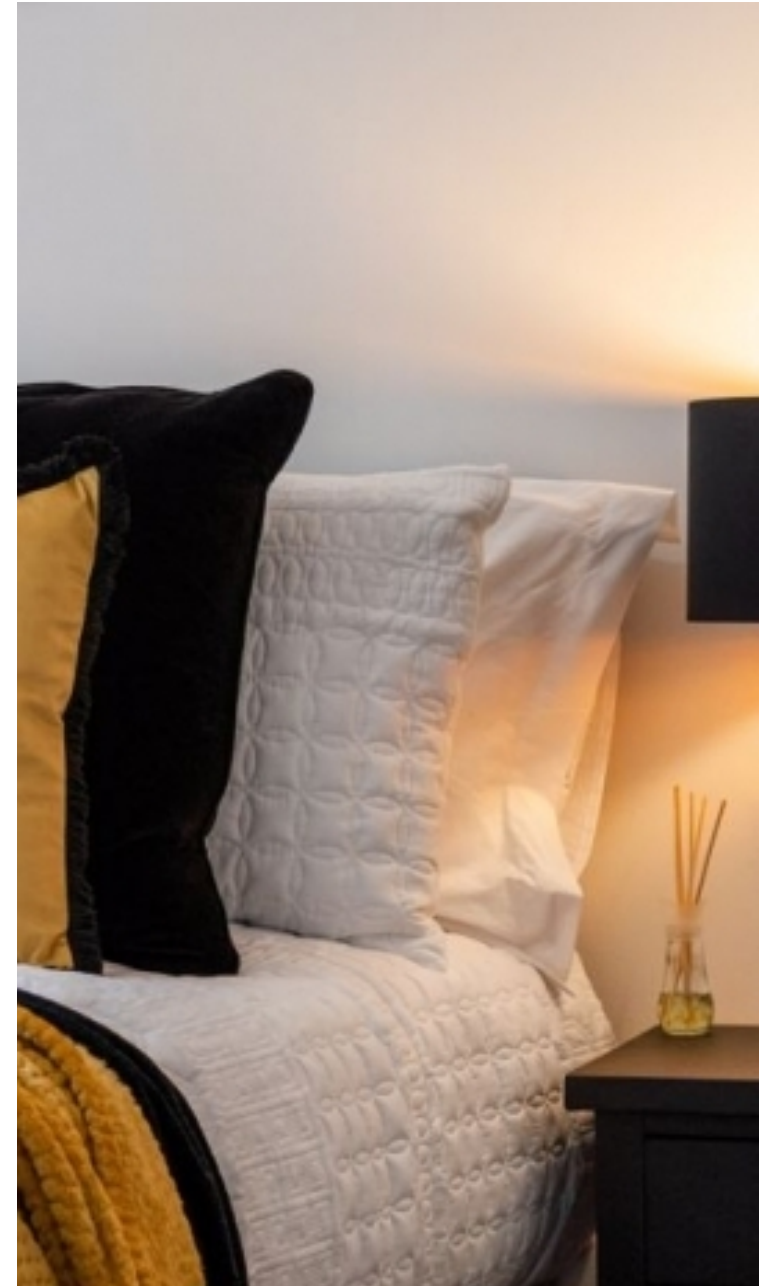
 x 2

 x 1

 x 1



"I was very impressed with Vita and their network of buyers. When the sale of my flat fell through (twice) they worked extremely hard to find new buyers in a difficult market - thank you!"



"Working with Vita properties has been a smooth experience! No complaints at all. Our letting agent, Diana has been fantastic and very helpful throughout the whole process. I would highly recommend both Vita properties and Diana."



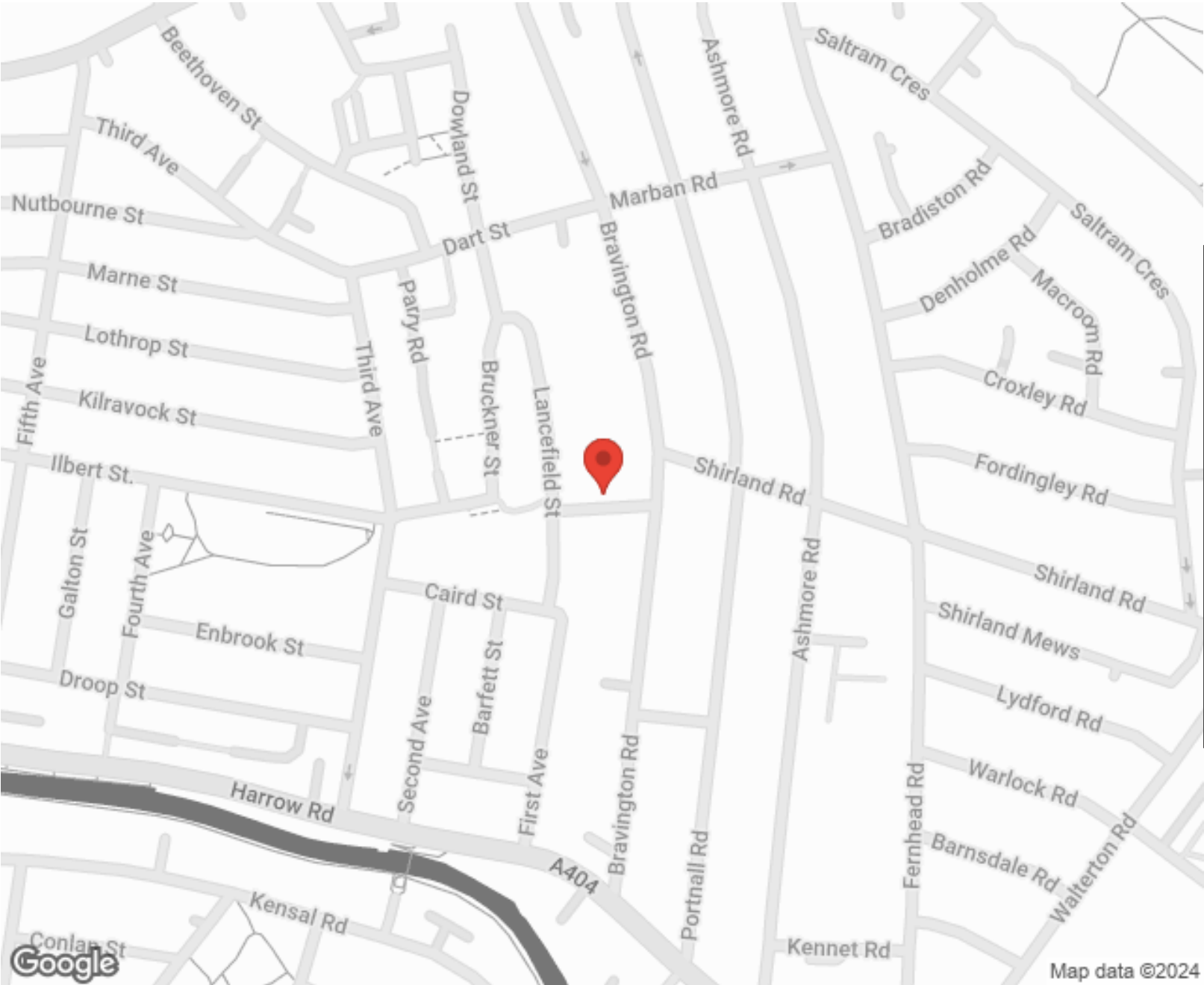
"I used Vita properties to find a flat recently and it was an overall professional, personalised and positive experience. Saira went the extra mile to accommodate to our needs and quick to help us whenever possible."



**MORE INFO, PICTURES,
CONTACT ON
OUR WEBSITE**



"Vita Properties is a very professional agency. My experience with them was incredible and the entire team was very helpful and kind throughout the renting process. I'd highly recommend!"



Energy efficiency rating for this property

This property's current energy rating is D. It has the potential to be C.

[See how to improve this property's energy performance.](#)

Score	Energy rating	Current	Potential
92+	A		
81-91	B		
69-80	C		76 C
55-68	D	60 D	
39-54	E		
21-38	F		
1-20	G		

SCAN FOR MORE
GOOGLE REVIEWS



Google



4.9 Stars | 132 Reviews

Find us on social media



vitaproperties



VitaProperties

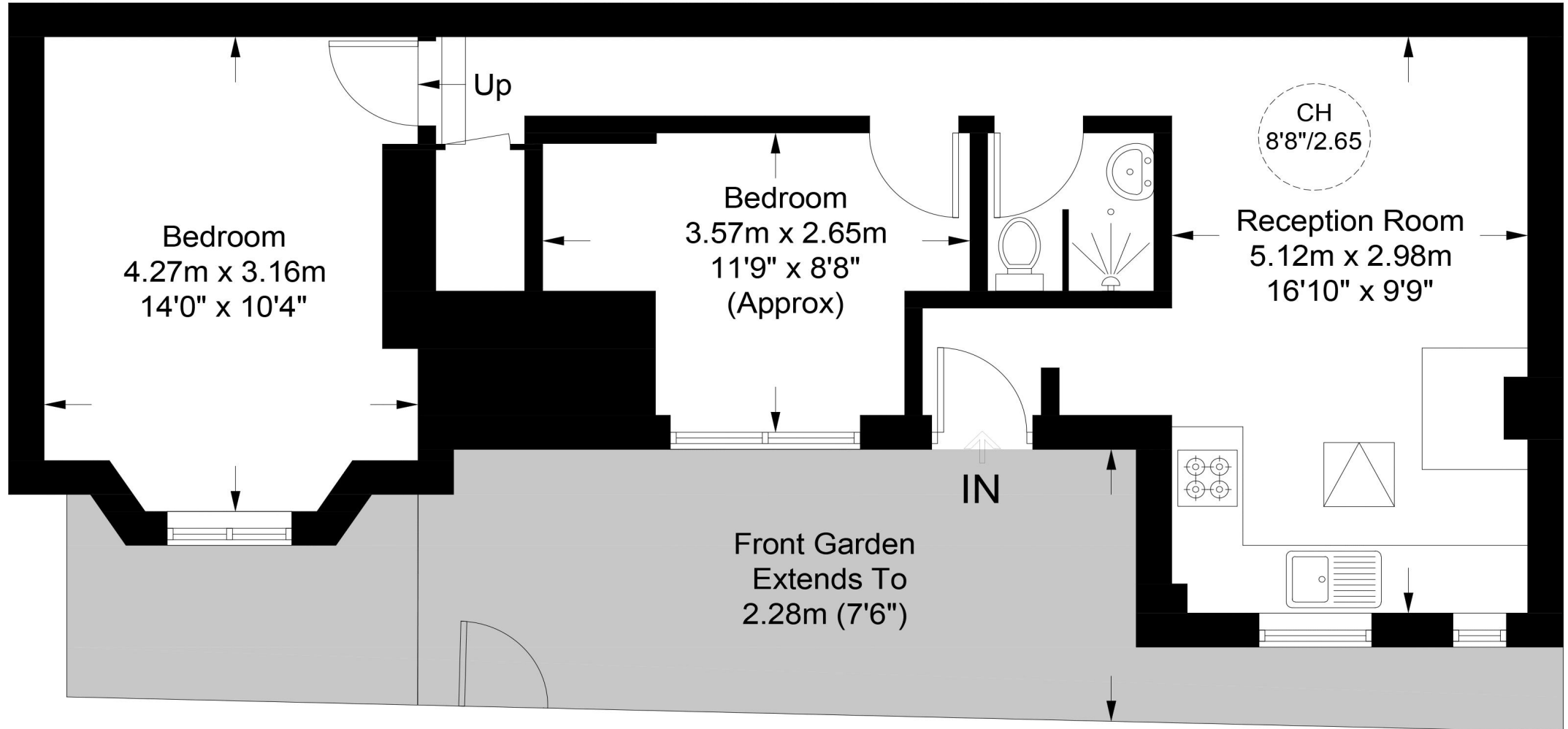


VitaProperties



Mozart Street, W10

Approximate Gross Internal Area = 534 sq ft / 49.6 sq m



Ground Floor



**Certified
Property
Measurer**

This plan is for layout guidance only. Not drawn to scale unless stated. Windows and door openings are approximate. Whilst every care is taken in the preparation of this plan, please check all dimensions, shapes and compass bearings before making any decisions reliant upon them. (ID913910)