



Albermarle Mansions, Heath Drive, Hampstead NW3 | £1,350,000

- Share Of Freehold
- Abundance of Natural Light
- Circa 2000 sqft of Lateral Space
- High Ceilings

- 2nd Floor with Lift


"Vita Properties have been tremendously helpful throughout the process of securing/renting my flat. Informative about the property, prompt communication, easy to use dashboard for sharing of information, and pleasant to work with. Highly recommend!"


We are delighted to showcase this south facing four bedroom lateral apartment. This rarely available second floor apartment is placed within this beautifully maintained Mansion Block that's situated on the prestigious tree lined street of Heath Drive.


This outstanding home which extends to approximately 1955 sq ft of well-proportioned accommodation, features: Large reception room with triple aspect windows, fully fitted kitchen/diner, principal bedroom with fitted wardrobes, three further good sized bedrooms, family bathroom, guest cloakroom and utility room.


Heath Drive is walking distance from Hampstead Heath and Hampstead village and a short walk to West Hampstead Thameslink station & Jubilee line, Hampstead underground station (Northern Line) and within walking distance to the Finchley Road amenities.




 Flat

 Share of Freehold

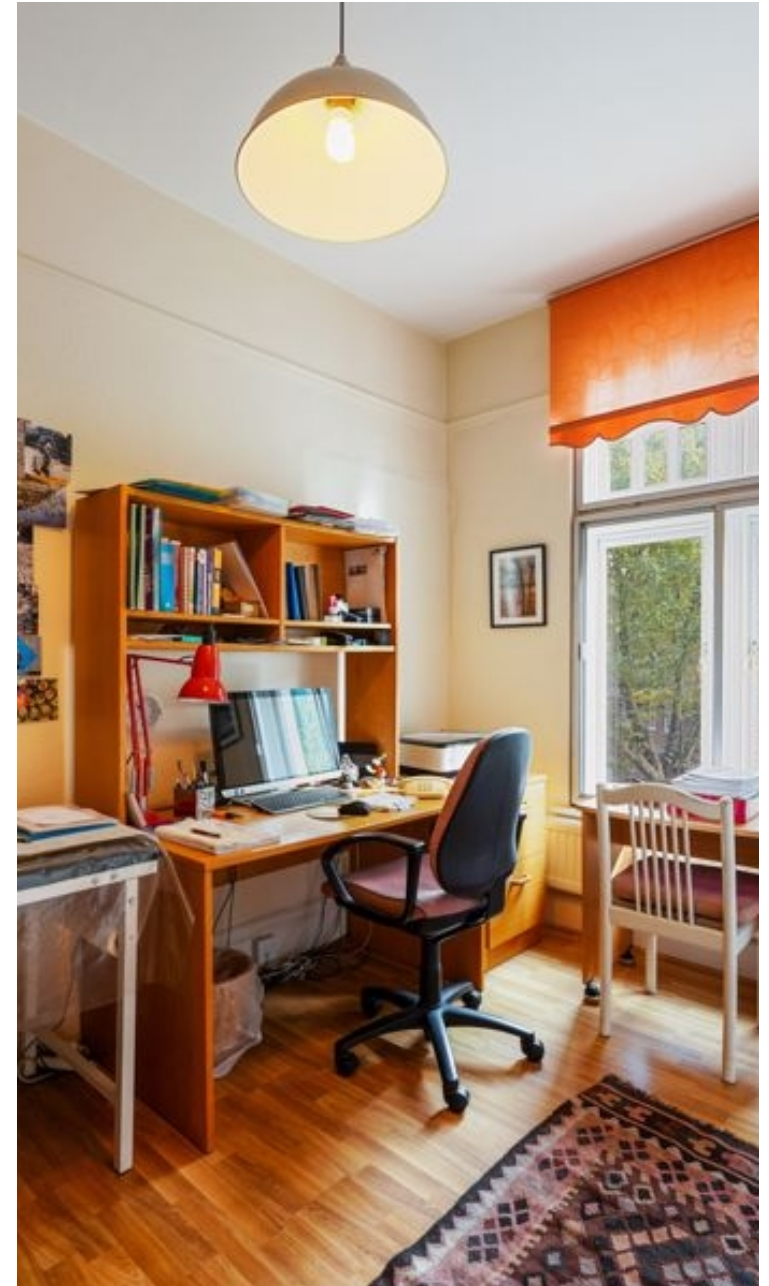
 x 4

 x 1

 x 1



"I was very impressed with Vita and their network of buyers. When the sale of my flat fell through (twice) they worked extremely hard to find new buyers in a difficult market - thank you!"



"Working with Vita properties has been a smooth experience! No complaints at all. Our letting agent, Diana has been fantastic and very helpful throughout the whole process. I would highly recommend both Vita properties and Diana."



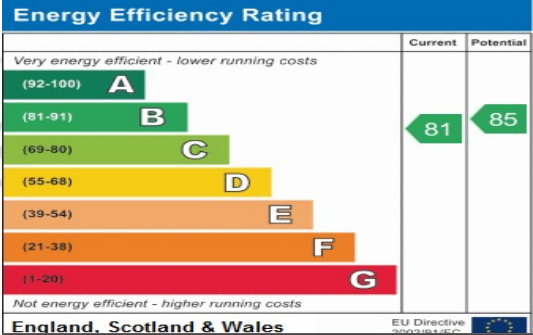
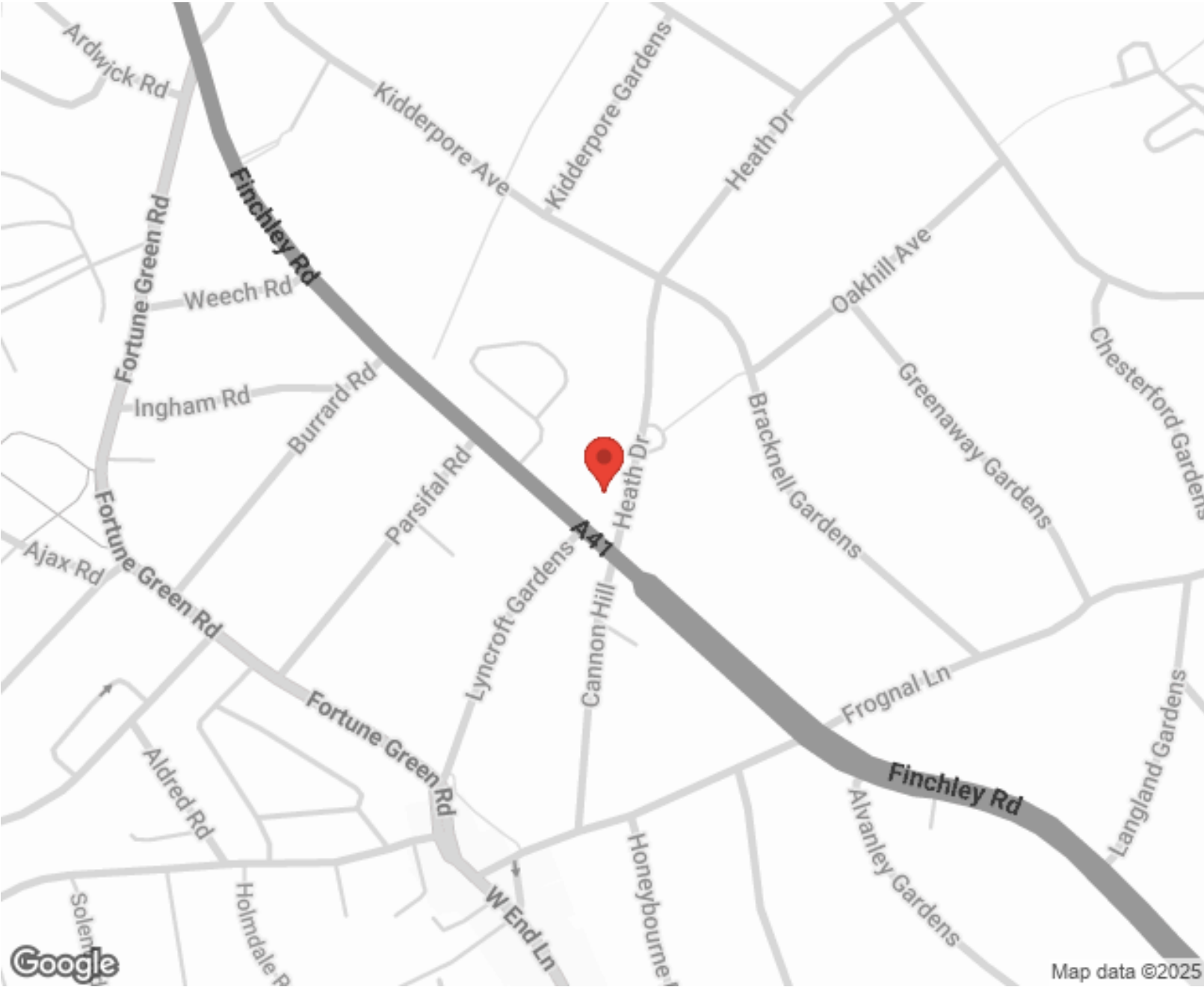
"I used Vita properties to find a flat recently and it was an overall professional, personalised and positive experience. Saira went the extra mile to accommodate to our needs and quick to help us whenever possible."



MORE INFO, PICTURES,
CONTACT ON
OUR WEBSITE



"Vita Properties is a very professional agency. My experience with them was incredible and the entire team was very helpful and kind throughout the renting process. I'd highly recommend!"



SCAN FOR MORE
GOOGLE REVIEWS

Google
★★★★★
4.9 Stars | 132 Reviews

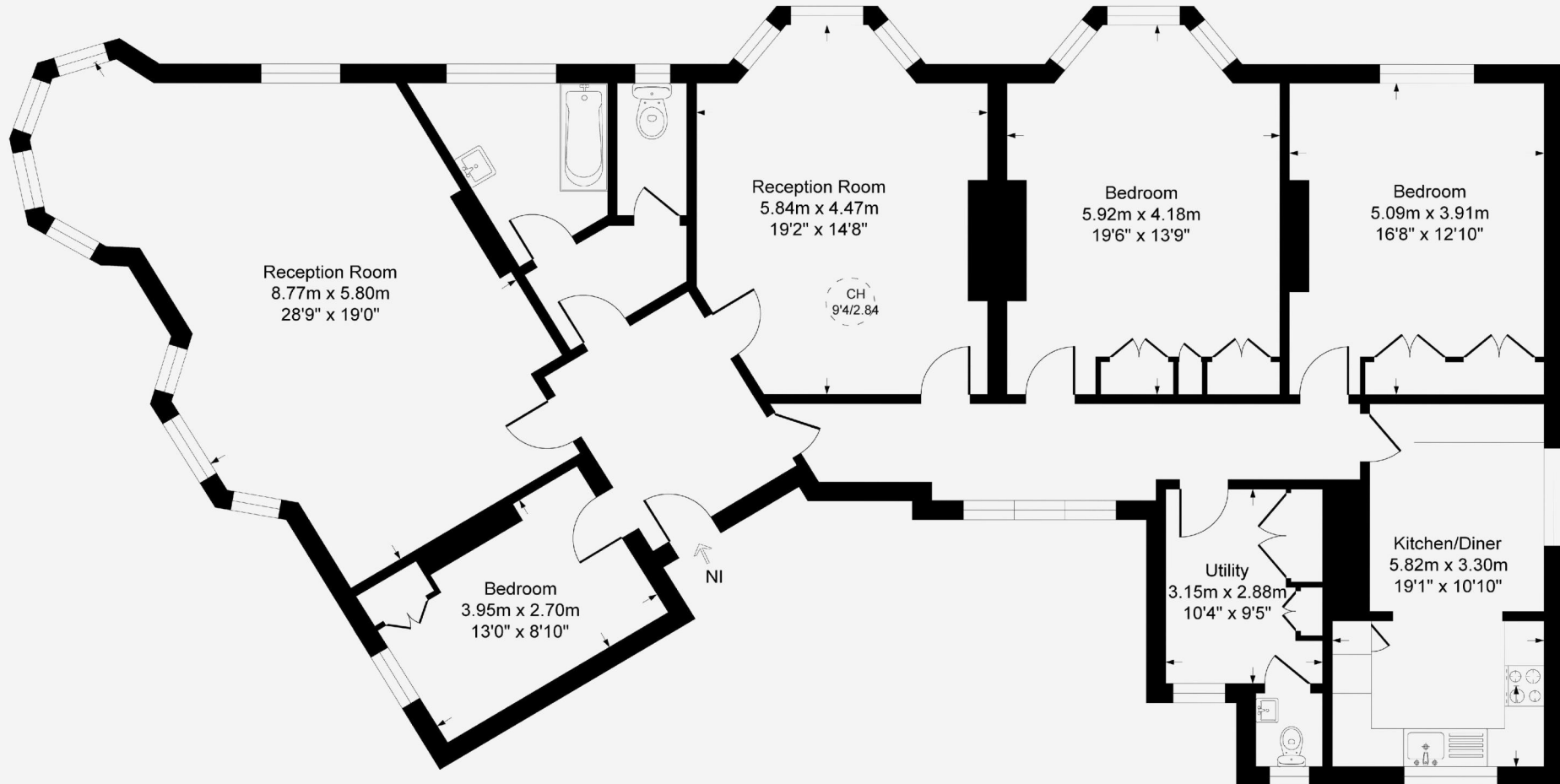
Find us on social media

- vitaproperties
- VitaProperties
- VitaProperties



Albermarle Mansions NW3

Approximate Gross Internal Area = 1955 sq ft / 182 sq m



Second Floor



**Certified
Property
Measurer**

This plan is for layout guidance only. Not drawn to scale unless stated. Windows and door openings are approximate. Whilst every care is taken in the preparation of this plan, please check all dimensions, shapes and compass bearings before making any decisions reliant upon them. (ID905399)