



Clive Court, Maida Vale, Maida Vale, London W9 .| £850

- 3 bedrooms
- Balcony
- Heating and Hot Water Included
- Managed

- Modern throughout
- Available immediately

"Vita Properties have been tremendously helpful throughout the process of securing/renting my flat. Informative about the property, prompt communication, easy to use dashboard for sharing of information, and pleasant to work with. Highly recommend!"

A bright and brand newly refurbished three bedroom apartment arranged over the fifth floor of a well presented purpose built block located in the centre of Maida Vale. This fantastic property offers modern fixtures and fittings and separate fully fitted kitchen, three double bedrooms with built in storage and a family bathroom. Further benefits include wooden flooring and 24 hour concierge. Clive Court is ideally positioned 0.1m from Clifton Gardens and the local amenities that W9 has to offer. Council Tax Band: F.



Saira Ishfaq

✉ [saira@vitaproperties.uk](mailto:saira@vitaproperties.uk)  
☎ +4475 5575 4510





Flat



Available to Let



x 3



x 1

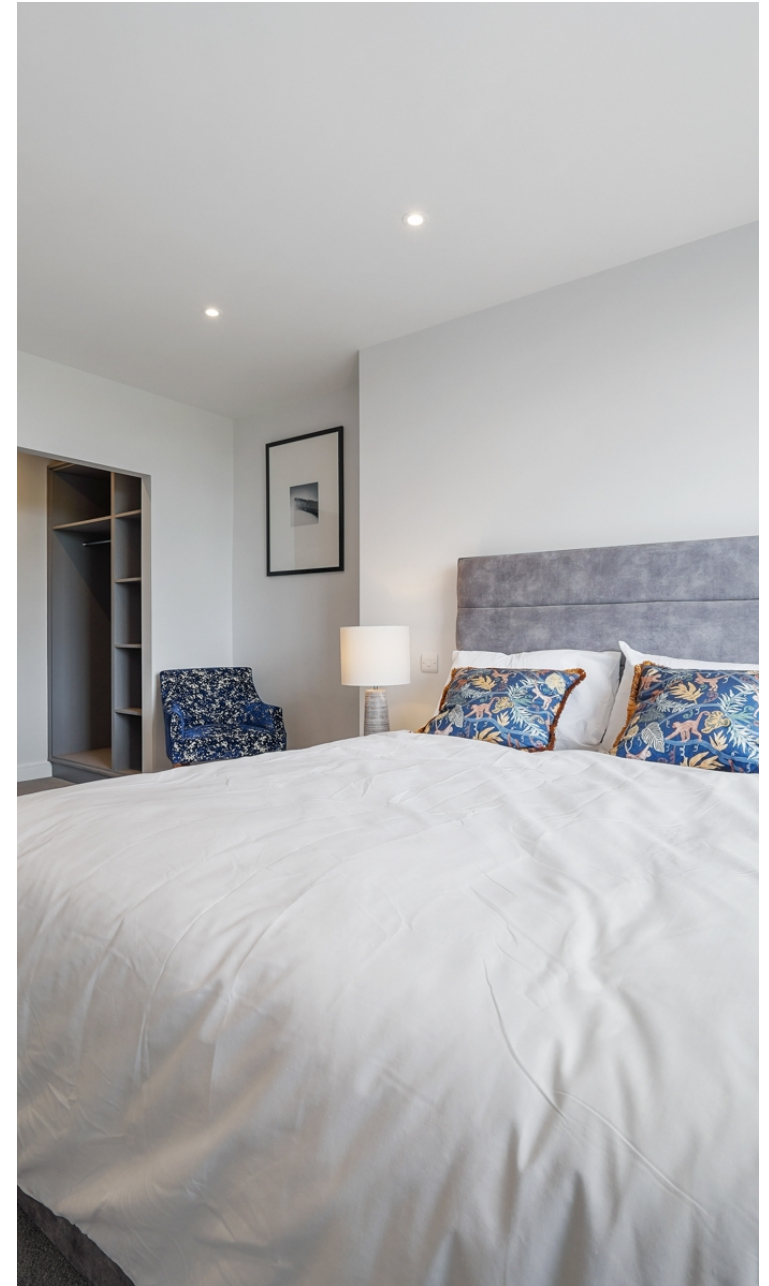


x 2



"I was very impressed with Vita and their network of buyers. When the sale of my flat fell through (twice) they worked extremely hard to find new buyers in a difficult market - thank you!"

---



"Working with Vita properties has been a smooth experience! No complaints at all. Our letting agent, Diana has been fantastic and very helpful throughout the whole process. I would highly recommend both Vita properties and Diana."

---



"I used Vita properties to find a flat recently and it was an overall professional, personalised and positive experience. Saira went the extra mile to accommodate to our needs and quick to help us whenever possible."

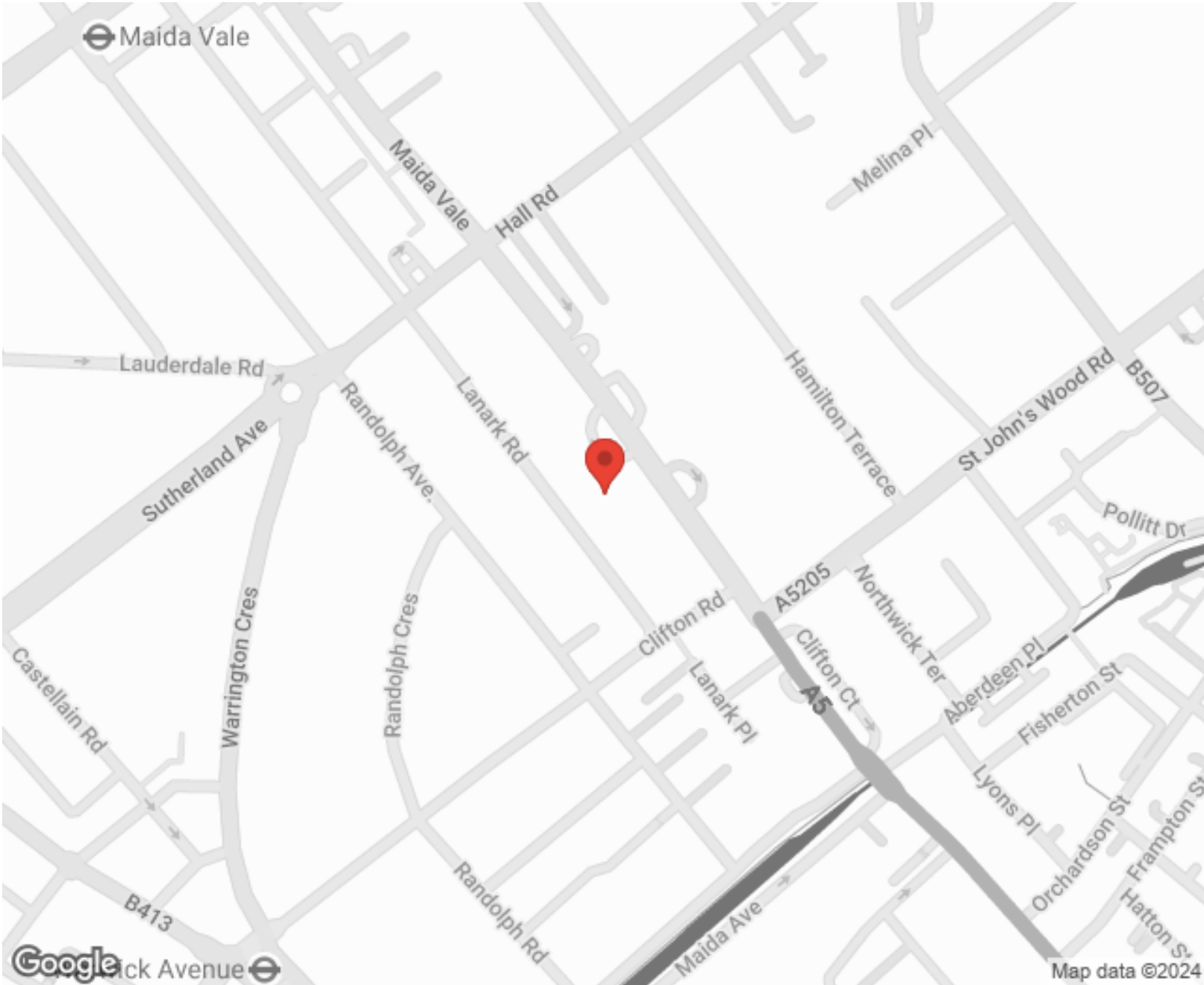
---



MORE INFO, PICTURES,  
CONTACT ON  
OUR WEBSITE



"Vita Properties is a very professional agency. My experience with them was incredible and the entire team was very helpful and kind throughout the renting process. I'd highly recommend!"



Energy Efficiency Rating		
	Current	Potential
Very energy efficient - lower running costs		
(92-100) <b>A</b>		85
(81-91) <b>B</b>		
(69-80) <b>C</b>	79	
(55-68) <b>D</b>		
(39-54) <b>E</b>		
(21-38) <b>F</b>		
(1-20) <b>G</b>		
Not energy efficient - higher running costs		
England, Scotland & Wales		
EU Directive 2002/91/EC		

SCAN FOR MORE  
GOOGLE REVIEWS






Google



4.9 Stars | 132 Reviews

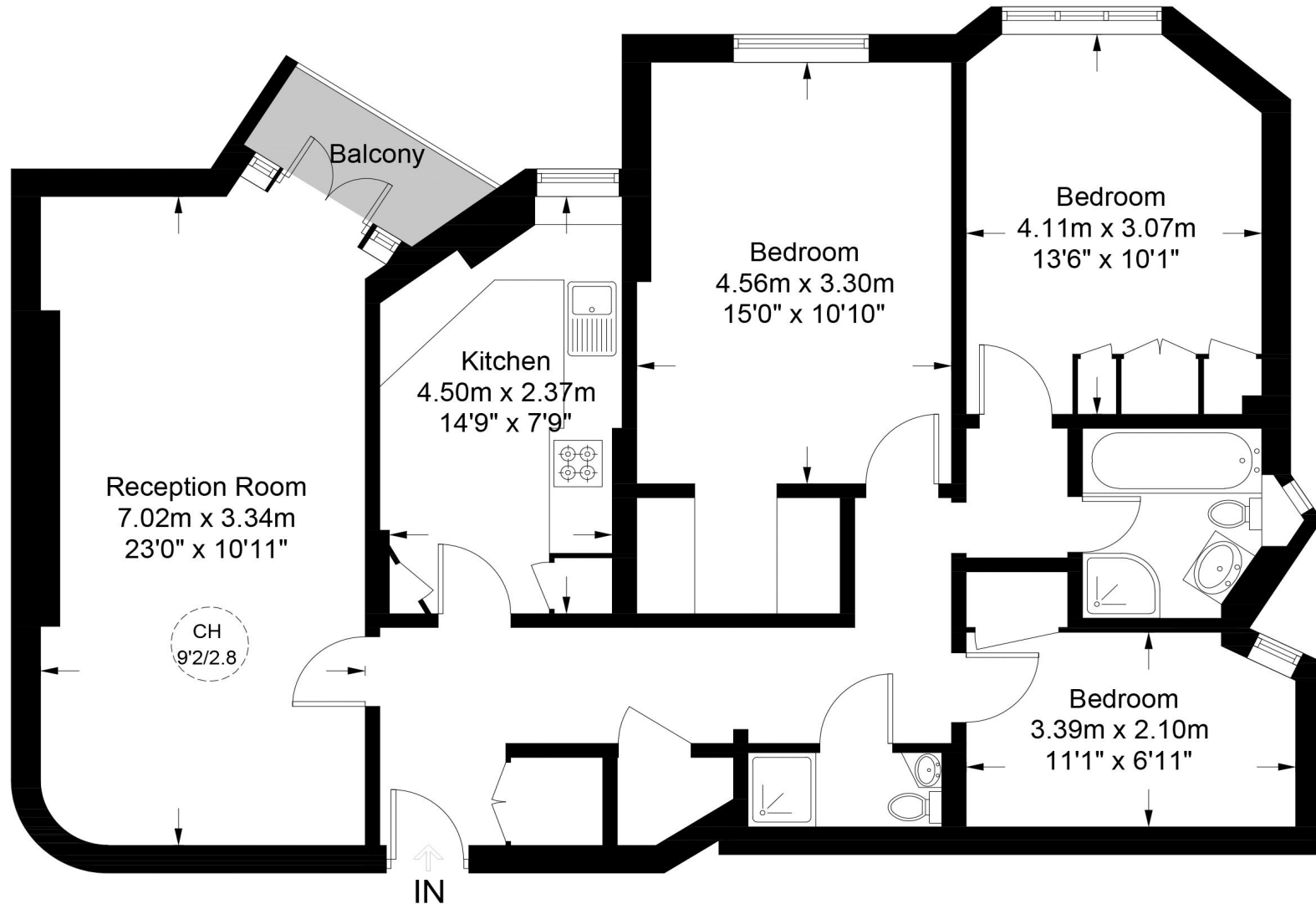
Find us on social media

-  vitaproperties
-  VitaProperties
-  VitaProperties



# Clive Court, W9

Approximate Gross Internal Area = 1032 sq ft / 95.9 sq m



## Fifth Floor

This plan is for layout guidance only. Not drawn to scale unless stated. Windows and door openings are approximate. Whilst every care is taken in the preparation of this plan, please check all dimensions, shapes and compass bearings before making any decisions reliant upon them. (ID896167)



**Certified  
Property  
Measurer**