



Honeybourne Road, West Hampstead, London NW6 .| £900,000

- 3/4 Bedrooms
- 2 Bathrooms
- Small Balcony
- Moments from tube

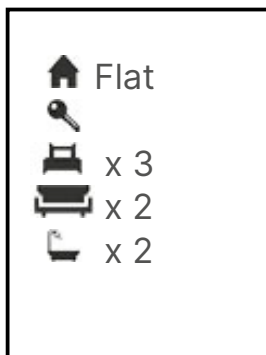
- Sought after location
- Eat in kitchen

"Vita Properties have been tremendously helpful throughout the process of securing/renting my flat. Informative about the property, prompt communication, easy to use dashboard for sharing of information, and pleasant to work with. Highly recommend!"

We are delighted to offer this 3/4 bedroom, two bathroom apartment situated in a redbrick mansion block on one of West Hampstead's most desirable streets.

The apartment further comprises of a large kitchen, fantastic size reception room and a balcony further benefiting access to communal gardens.

The property boasts 1,074 sq ft and is 0.4 miles from West Hampstead Station whilst also being moments away from the fashionable high street which includes amazing restaurants, shops and amenities.

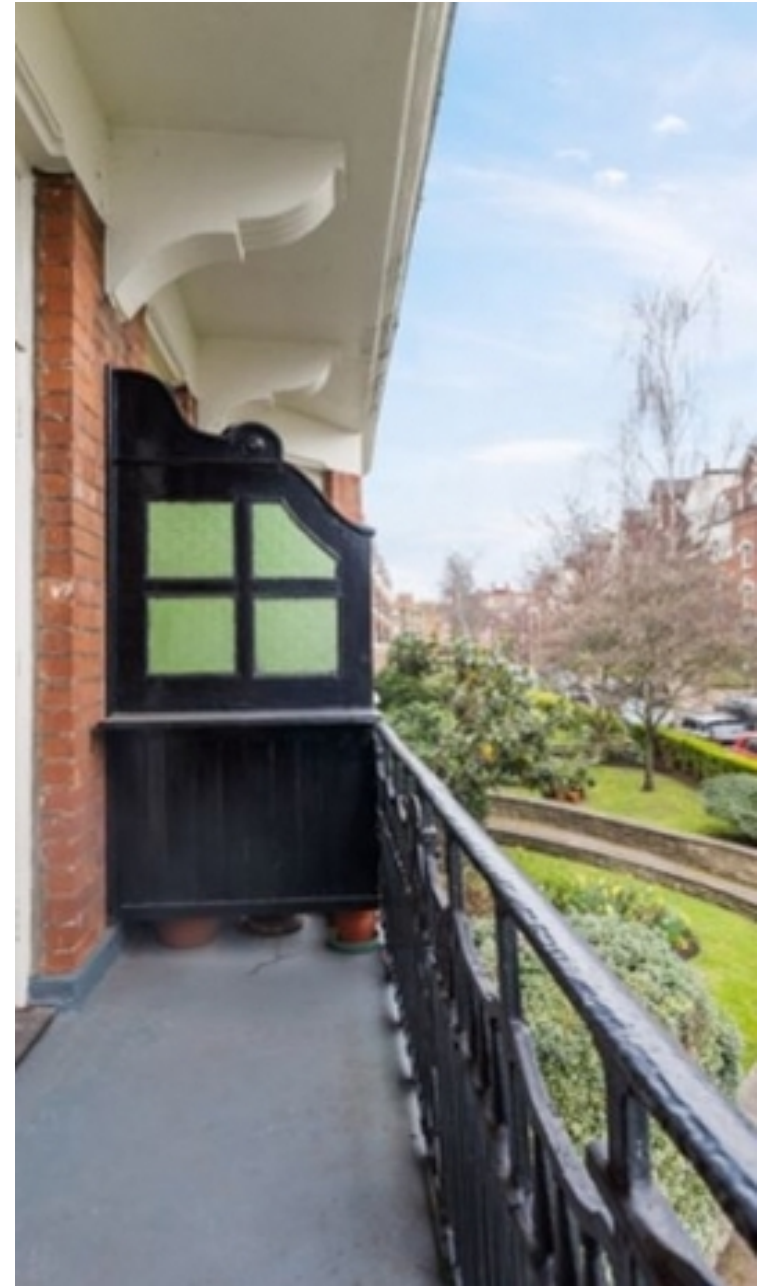


Oliver Kent

✉ oliver.kent@vitaproperties.uk
☎ +4477 7274 0351



"I was very impressed with Vita and their network of buyers. When the sale of my flat fell through (twice) they worked extremely hard to find new buyers in a difficult market - thank you!"



"Working with Vita properties has been a smooth experience! No complaints at all. Our letting agent, Diana has been fantastic and very helpful throughout the whole process. I would highly recommend both Vita properties and Diana."



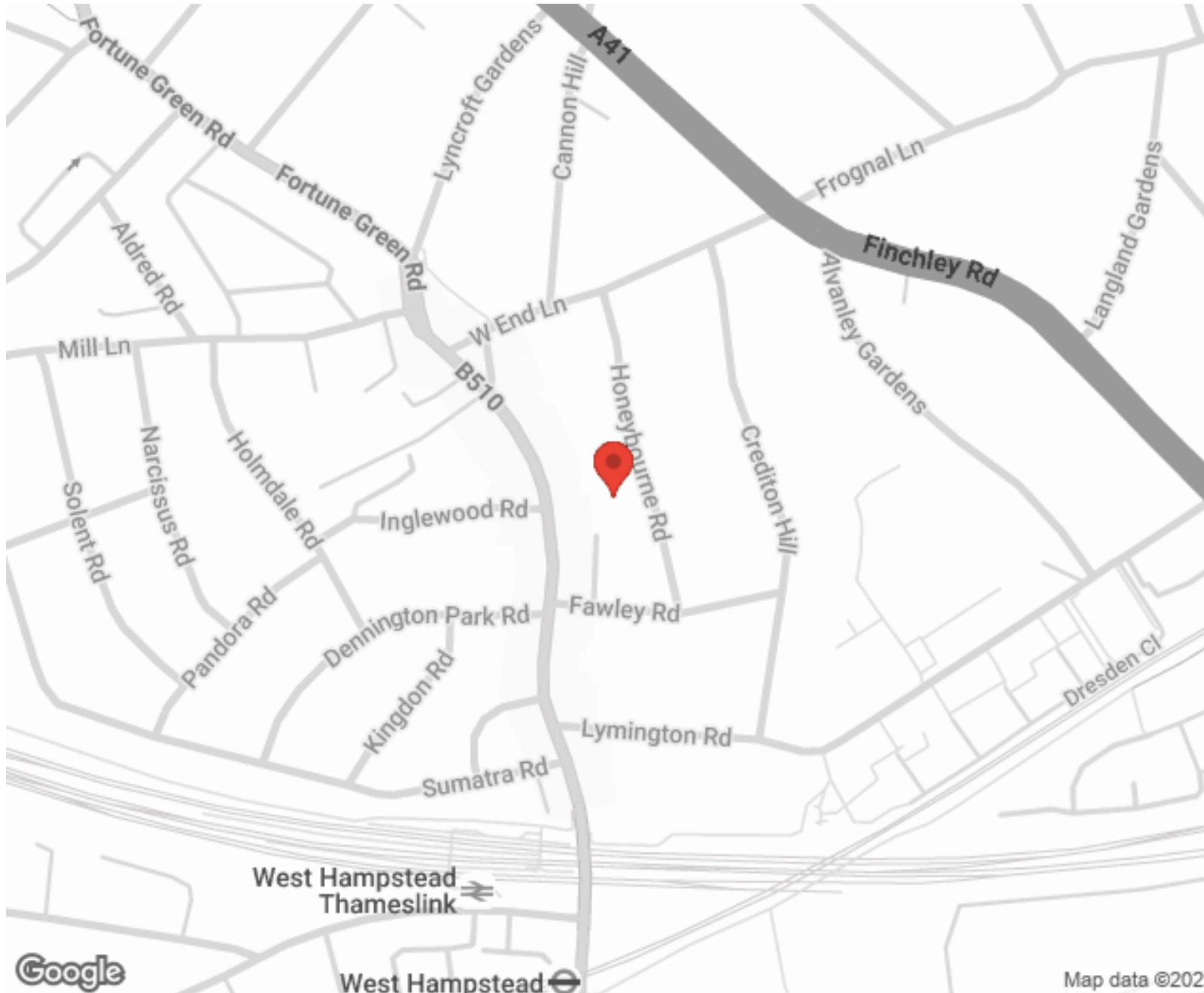
"I used Vita properties to find a flat recently and it was an overall professional, personalised and positive experience. Saira went the extra mile to accommodate to our needs and quick to help us whenever possible."



MORE INFO, PICTURES,
CONTACT ON
OUR WEBSITE



"Vita Properties is a very professional agency. My experience with them was incredible and the entire team was very helpful and kind throughout the renting process. I'd highly recommend!"



SCAN FOR MORE
GOOGLE REVIEWS



Google




4.9 Stars | 132 Reviews

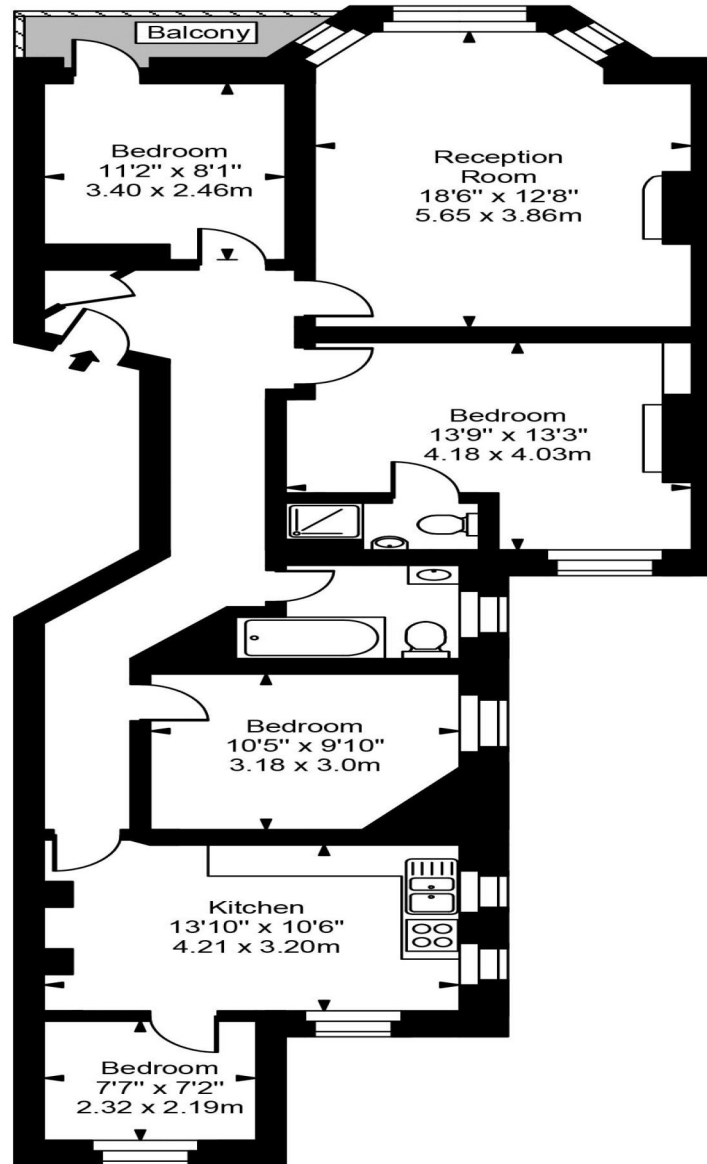
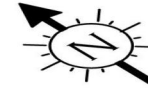
Find us on social media

 vitaproperties

 VitaProperties

 VitaProperties

Harvard Court



First Floor



Approx Gross Internal Area **1074 Sq Ft - 99.82 Sq M**

For Illustration Purposes Only - Not To Scale
Floor plan by www.creativeplanetlk.com