



Abercorn Place, St Johns Wood, London NW8 .| £1,500

- Modern Throughout
- Wooden Floors
- Off Street Parking
- Private South Facing Patio Garden

- Moments to St Johns Wood and Maida Vale
- Available Beg June

"Vita Properties have been tremendously helpful throughout the process of securing/renting my flat. Informative about the property, prompt communication, easy to use dashboard for sharing of information, and pleasant to work with. Highly recommend!"

A charming, bright and attractively presented three bedroom house located within easy reach of Maida Vale with its vast array of shopping and transport amenities. The house offers bright, comfortable and well-planned living accommodation. Abercorn Cottages is situated at the western end of Abercorn Place with easy access to Central London and within a short walk of the leisure, sports and park facilities at Paddington Recreation Ground. The nearest tube station is Maida Vale Bakerloo Line - 0.1 miles.



Oliver Kent

✉ oliver.kent@vitaproperties.uk

☎ +4477 7274 0351



🏠 House
🔑 Under
Negotiation
🛏 x 3
🛋 x 2
🚗 x 2



"I was very impressed with Vita and their network of buyers. When the sale of my flat fell through (twice) they worked extremely hard to find new buyers in a difficult market - thank you!"



"Working with Vita properties has been a smooth experience! No complaints at all. Our letting agent, Diana has been fantastic and very helpful throughout the whole process. I would highly recommend both Vita properties and Diana."



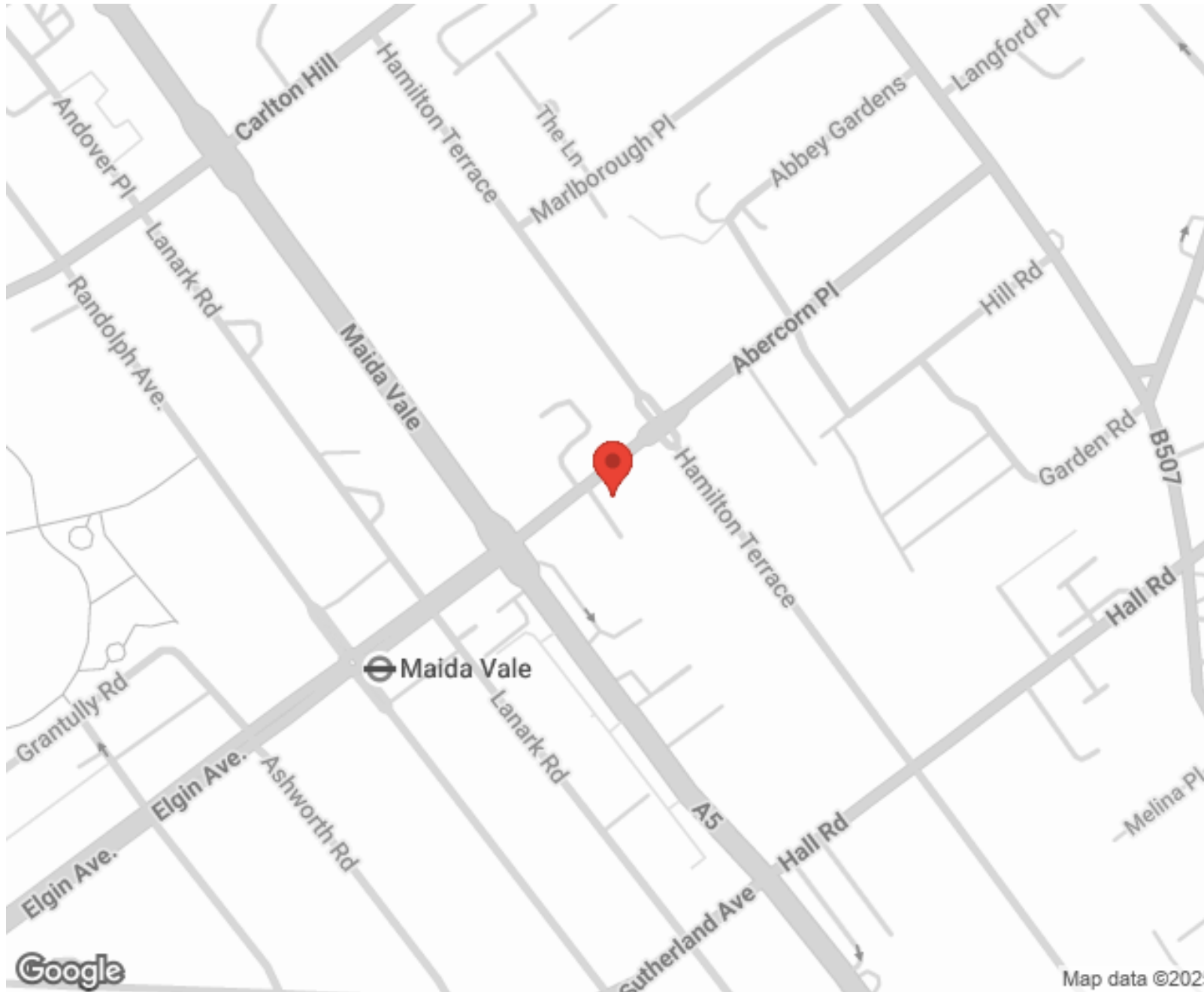
"I used Vita properties to find a flat recently and it was an overall professional, personalised and positive experience. Saira went the extra mile to accommodate to our needs and quick to help us whenever possible."



**MORE INFO, PICTURES,
CONTACT ON
OUR WEBSITE**



"Vita Properties is a very professional agency. My experience with them was incredible and the entire team was very helpful and kind throughout the renting process. I'd highly recommend!"



SCAN FOR MORE
GOOGLE REVIEWS



Google




4.9 Stars | 132 Reviews

Find us on social media

 vitaproperties

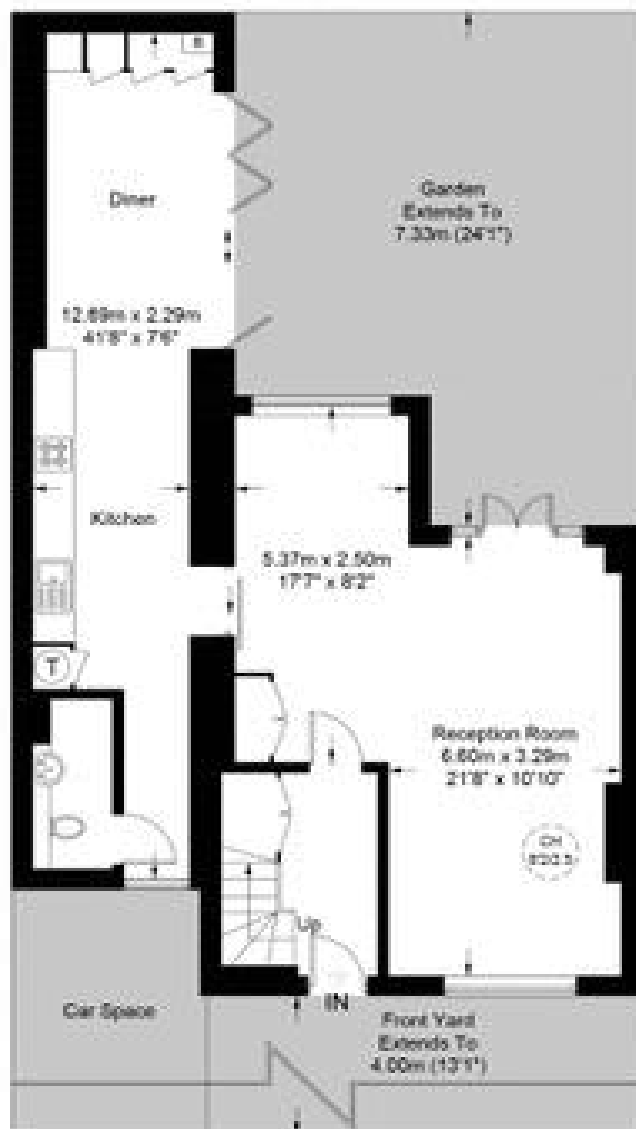
 VitaProperties

 VitaProperties



Abercorn Cottages, NW8

Approximate Gross Internal Area = 1469 sq ft / 136.5 sq m



Ground Floor



First Floor

This plan is for layout guidance only. Not drawn to scale unless stated. Windows and door openings are approximate. Whilst every care is taken in the preparation of this plan, please check all dimensions, shapes and compass bearings before making any decisions reliant upon them. (ID835601)