



Luxborough Street, Marylebone, London W1 .| £850,000

- Third Floor with Lift Access!
- Share of Freehold
- Heart of Marylebone
- Decorated Throughout

- Excellent Amenities & Transport Links
- Chain free

"Vita Properties have been tremendously helpful throughout the process of securing/renting my flat. Informative about the property, prompt communication, easy to use dashboard for sharing of information, and pleasant to work with. Highly recommend!"

Presenting a lovely two bedroom flat set of the third floor (with lift access) of this purpose built development. Ideally located for the boutiques and restaurants of the vibrant Marylebone High Street and within walking distance to Baker Street Underground Station.

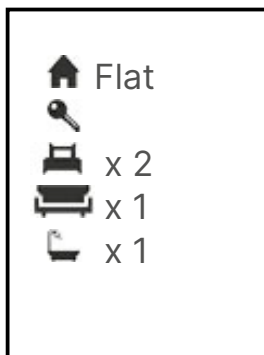
This property has been recently decorated to an excellent standard, so the property feels fresh and bright, but still allows plenty of room for further personal touches. Comprising of a bright and inviting reception room with access onto a small balcony with views of Paddington Street Gardens, a fitted kitchen with breakfast bar, exceptionally large master bedroom with built in storage, smaller double bedroom and finally a large family shower room.

Offered Chain Free with the Share of Freehold



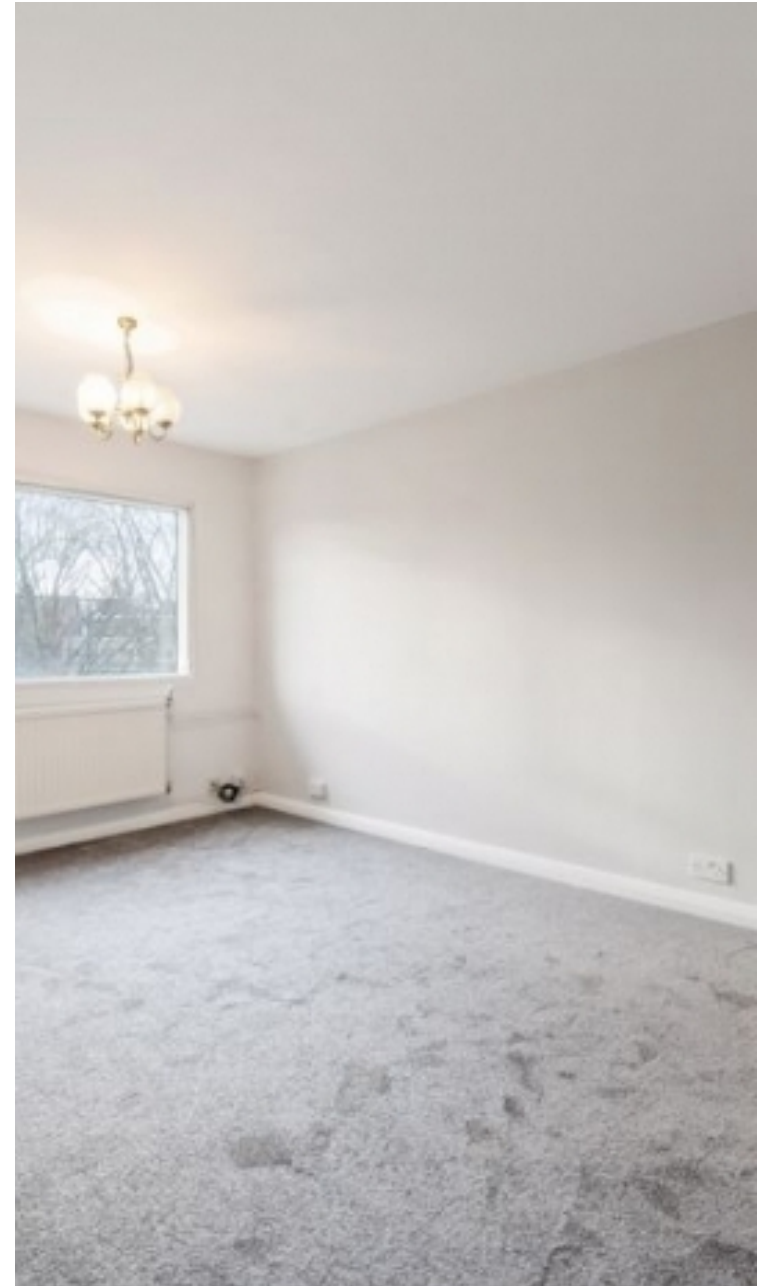
Oliver Kent

✉ [oliver.kent@vitaproperties.uk](mailto:oliver.kent@vitaproperties.uk)  
☎ +4477 7274 0351



"I was very impressed with Vita and their network of buyers. When the sale of my flat fell through (twice) they worked extremely hard to find new buyers in a difficult market - thank you!"

---



"Working with Vita properties has been a smooth experience! No complaints at all. Our letting agent, Diana has been fantastic and very helpful throughout the whole process. I would highly recommend both Vita properties and Diana."

---





"I used Vita properties to find a flat recently and it was an overall professional, personalised and positive experience. Saira went the extra mile to accommodate to our needs and quick to help us whenever possible."

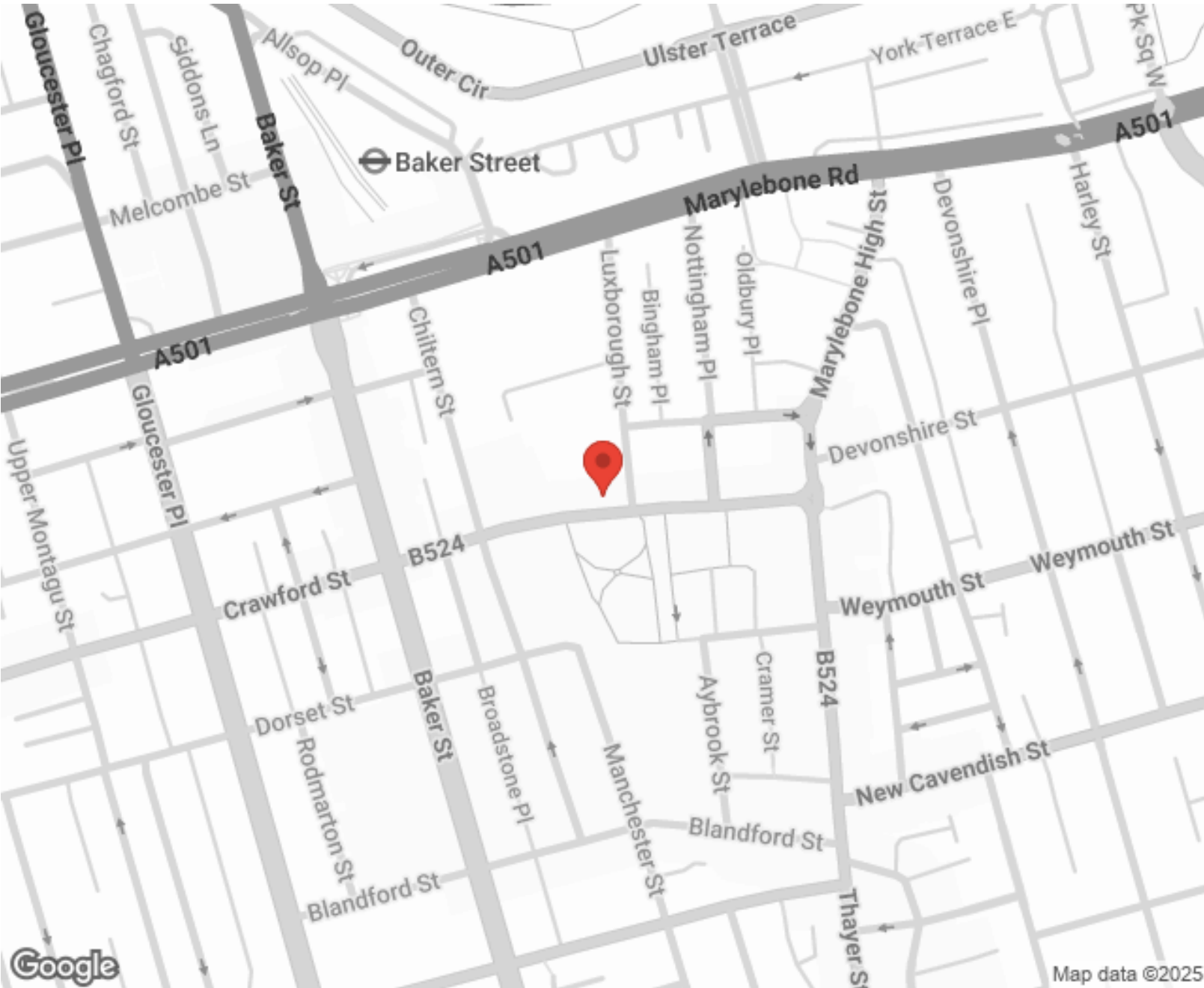
---



**MORE INFO, PICTURES,  
CONTACT ON  
OUR WEBSITE**



"Vita Properties is a very professional agency. My experience with them was incredible and the entire team was very helpful and kind throughout the renting process. I'd highly recommend!"



Energy Efficiency Rating		
	Current	Potential
Very energy efficient - lower running costs		
(92-100) <b>A</b>		
(81-91) <b>B</b>		
(69-80) <b>C</b>		71
(55-68) <b>D</b>		
(39-54) <b>E</b>	50	
(21-38) <b>F</b>		
(1-20) <b>G</b>		
Not energy efficient - higher running costs		
England, Scotland & Wales		
EU Directive 2002/91/EC		

SCAN FOR MORE  
GOOGLE REVIEWS



Google



4.9 Stars | 132 Reviews

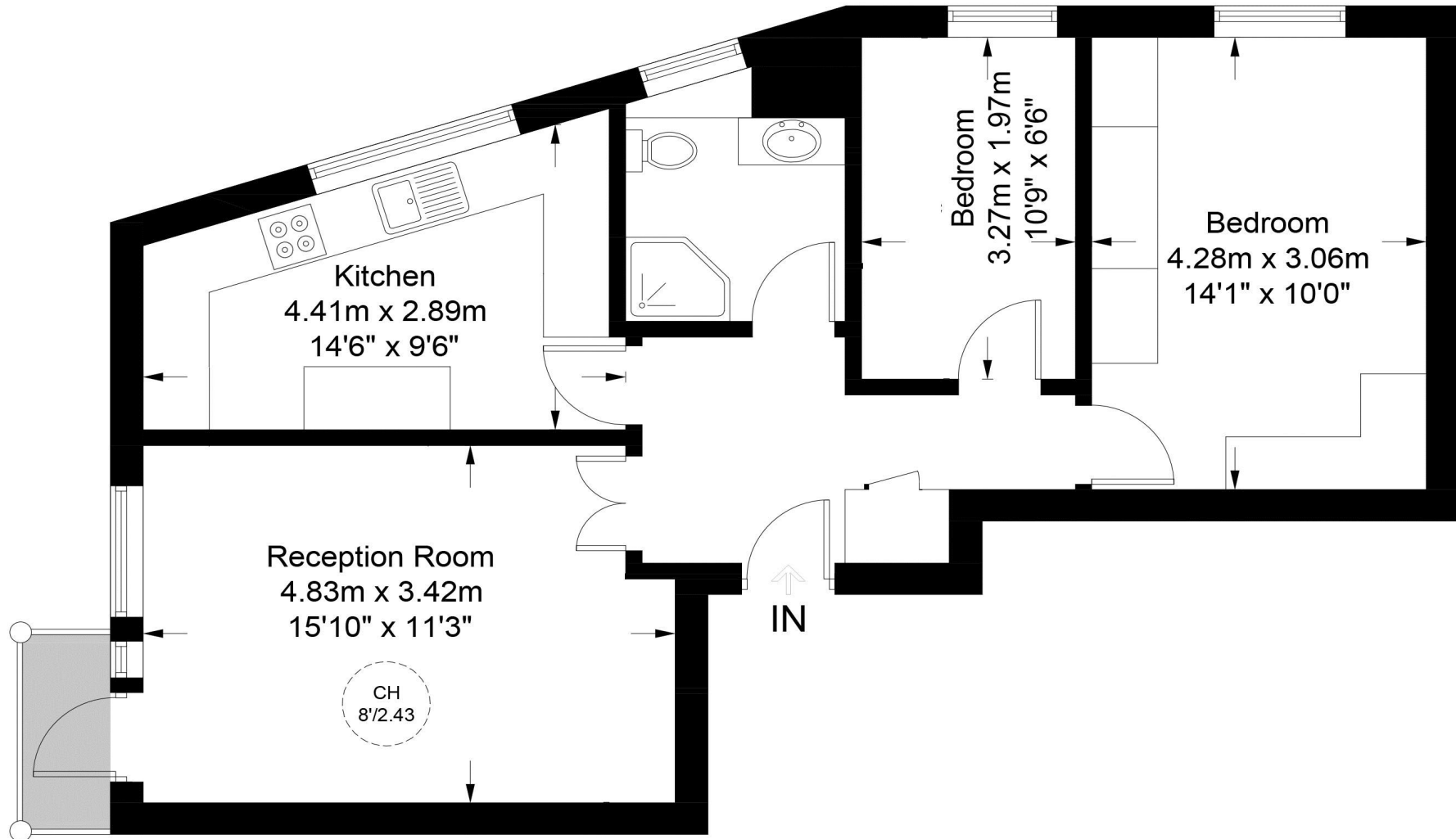
Find us on social media

-  vitaproperties
-  VitaProperties
-  VitaProperties



# Luxborough House, W1U

Approximate Gross Internal Area = 648 sq ft / 60.2 sq m



## Third Floor

This plan is for layout guidance only. Not drawn to scale unless stated. Windows and door openings are approximate. Whilst every care is taken in the preparation of this plan, please check all dimensions, shapes and compass bearings before making any decisions reliant upon them. (ID731103)