



VITA
Properties

W1 Place, Great Portland Street, London W1W | £2,250,000

- Natural stone walls façade
- Floor to ceiling bay windows
- Juliette balconies with bespoke cast aluminium balustrades
- Triple glazed aluminium windows

- Natural light throughout
- 24 Hour Concierge

"Vita Properties have been tremendously helpful throughout the process of securing/renting my flat. Informative about the property, prompt communication, easy to use dashboard for sharing of information, and pleasant to work with. Highly recommend!"

Designed from the inside out, and with an enviable central London location, W1 Place is perfect for the discerning individual, the professional couple and the modern family. The highly crafted quality throughout the building means you'll be feeling that reassuring click with every door you close, and the satisfying sound of your feet on the oak floor. Light pours in through the floor-to-ceiling bay windows, creating a sense of both openness and warmth, while the open-plan living and kitchen areas provide a thoroughly modern space to host your friends or enjoy a cosy night in. The selection of one, two and three-bed layouts provide luxurious living, designed with you at the heart.

The 37 unit scheme will include a selection of one, two and three

bed layouts.

The exterior boasts a bright, natural limestone façade coupled with bronze-coloured French windows. Inspired by the distinctive glaze of Japanese porcelain, the building's balustrades introduce additional artistic flair and texture as well as frame the windows from the outside in.

The nearest tube stations are Great Portland Street (3 min walk), Regents Park (4 min) and Warren Street (6 min).

****Images are for Marketing Purposes Only****

Leasehold: 900 Years

Estimated Service Charge: £7.00/Sq Ft per annum

Ground Rent:

1 beds: £750.00
2 beds: £1,250.00
3 beds: £1,500.00
Leasehold

Estimated Completion: Q3/ Q4 2023

x 2
x 1
x 2



Oliver Kent

✉ oliver.kent@vitaproperties.uk
☎ +4477 7274 0351



bedroom luxury residences with

South, West and East Facing views.

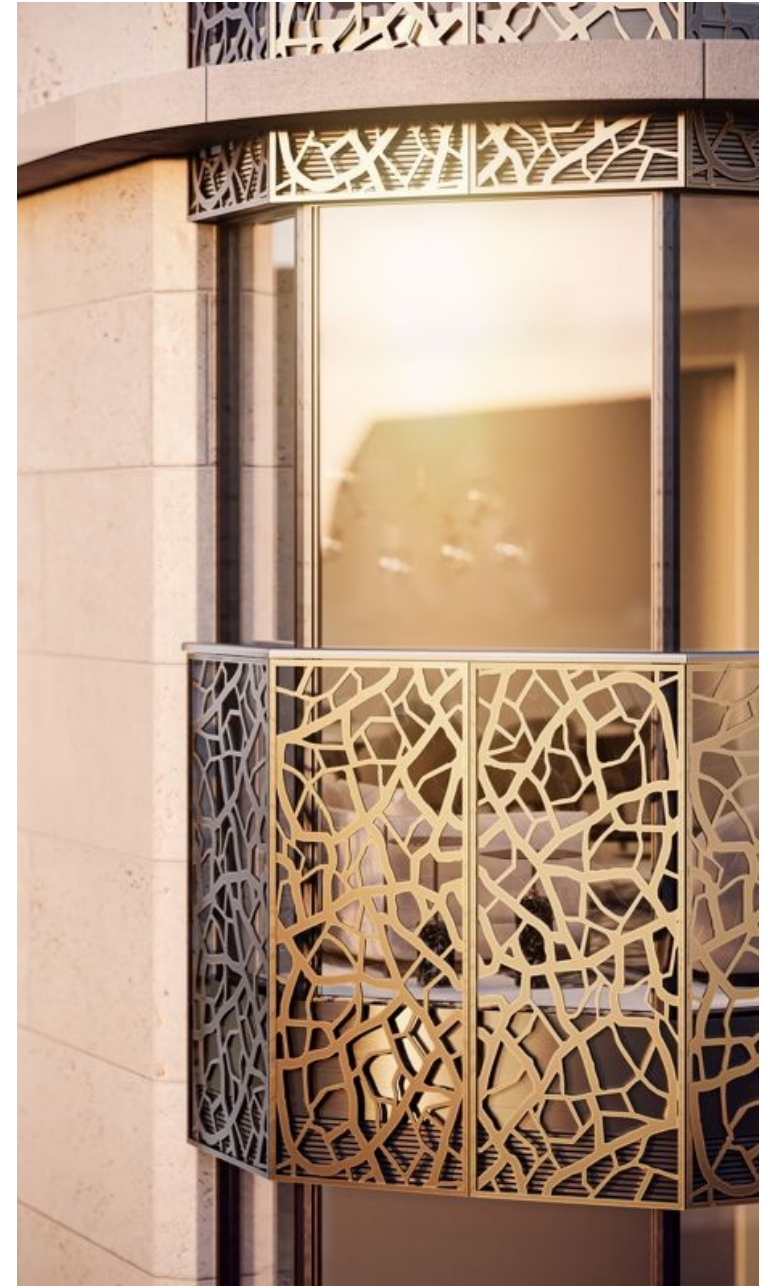
All apartments come with

generously proportioned open plan

living and kitchen areas framed by

the floor-to-ceiling bay windows.

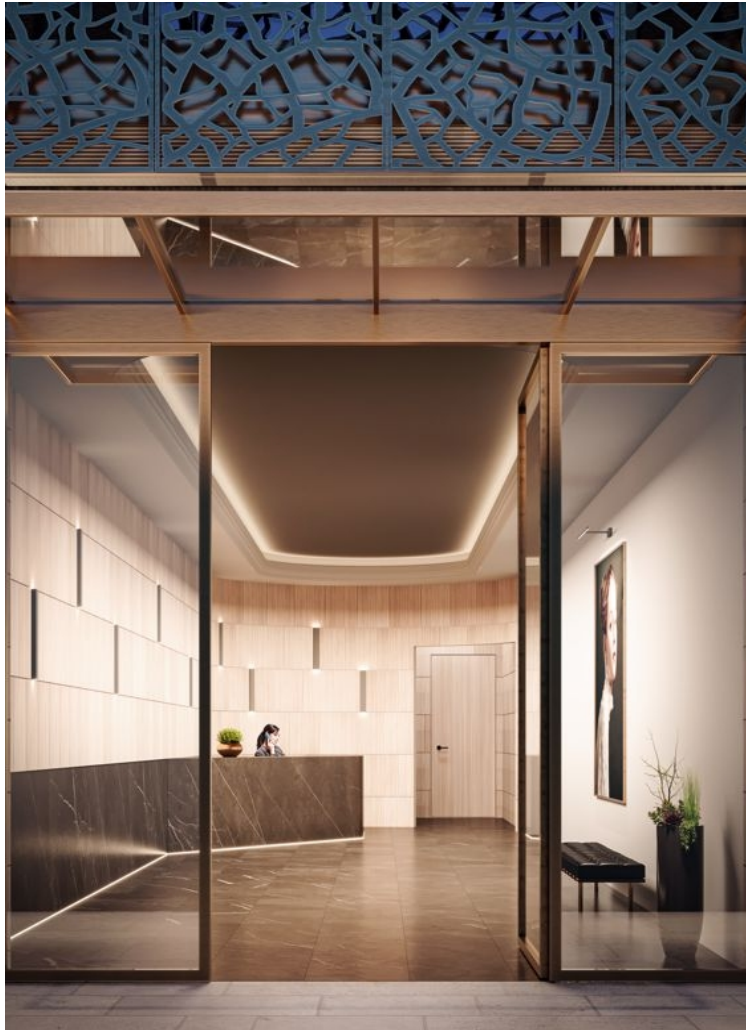
"I was very impressed with Vita and their network of buyers. When the sale of my flat fell through (twice) they worked extremely hard to find new buyers in a difficult market. Thank you!"



"Working with Vita properties has been a smooth experience! No complaints at all. Our letting agent, Diana has been fantastic and very helpful throughout the whole process. I would highly recommend both Vita properties and Diana."



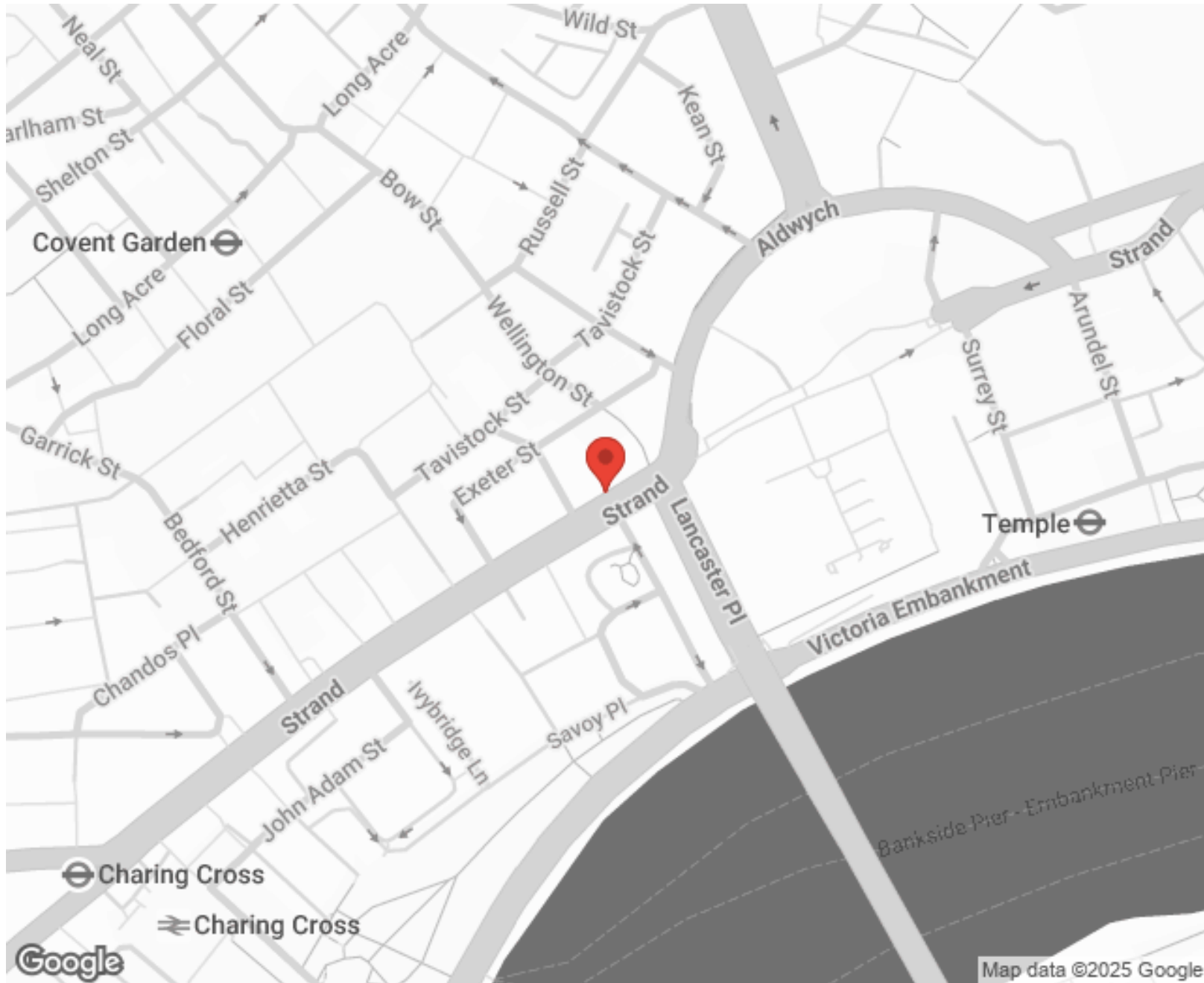
"I used Vita properties to find a flat recently and it was an overall professional, personalised and positive experience. Saira went the extra mile to accommodate to our needs and quick to help us whenever possible."



MORE INFO, PICTURES,
CONTACT ON
OUR WEBSITE



"Vita Properties is a very professional agency. My experience with them was incredible and the entire team was very helpful and kind throughout the renting process. I'd highly recommend!"



SCAN FOR MORE
GOOGLE REVIEWS



Google



4.9 Stars | 132 Reviews

Find us on social media



