



**VITA**  
*Properties*

Arkwright Road, Hampstead, London, NW3 | £2,450

- Pet Friendly
- 3 Bedrooms
- 3 Bathrooms
- Allocated Parking Space

- Excellent Location
- Available Asap

"Vita Properties have been tremendously helpful throughout the process of securing/renting my flat. Informative about the property, prompt communication, easy to use dashboard for sharing of information, and pleasant to work with. Highly recommend!"

---

A beautifully presented ground floor apartment of this stunning property on Arkwright Road. This property comprises of three bedrooms, one reception room, one dining room and three bathrooms including two en suites and one WC.

The property is a close walk to the stylish boutiques, shops and food stores of Hampstead Village benefiting from the surrounding parks and open spaces.

-  Flat
-  Available to Let
-  x 3
-  x 1
-  x 3



Oliver Kent

 [oliver.kent@vitaproperties.uk](mailto:oliver.kent@vitaproperties.uk)

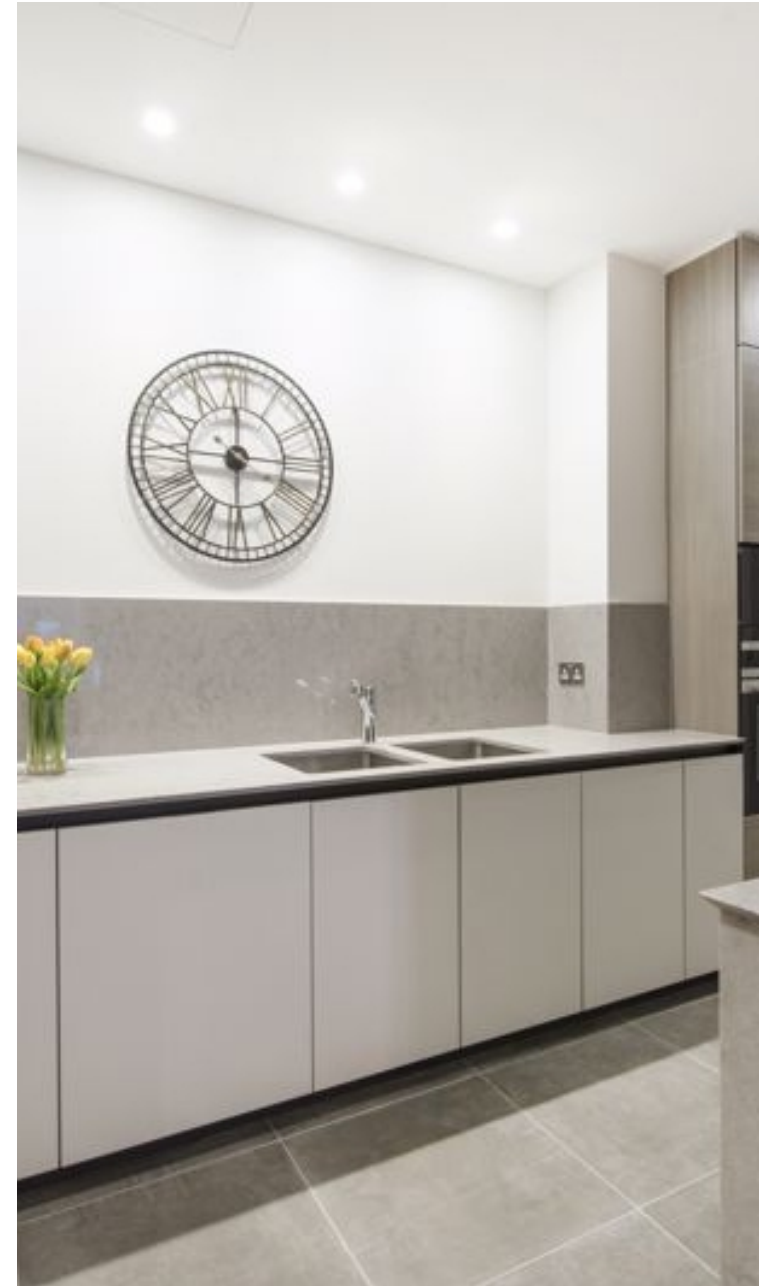
 +4477 7274 0351





"I was very impressed with Vita and their network of buyers. When the sale of my flat fell through (twice) they worked extremely hard to find new buyers in a difficult market - thank you!"

---



"Working with Vita properties has been a smooth experience! No complaints at all. Our letting agent, Diana has been fantastic and very helpful throughout the whole process. I would highly recommend both Vita properties and Diana."

---





"I used Vita properties to find a flat recently and it was an overall professional, personalised and positive experience. Saira went the extra mile to accommodate to our needs and quick to help us whenever possible."

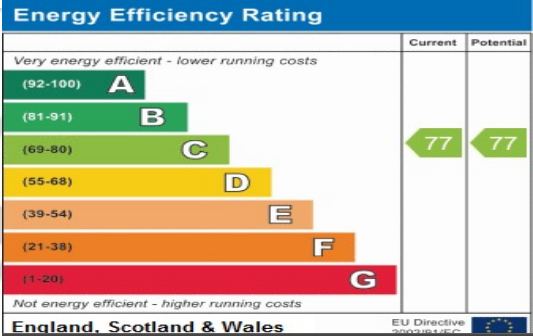
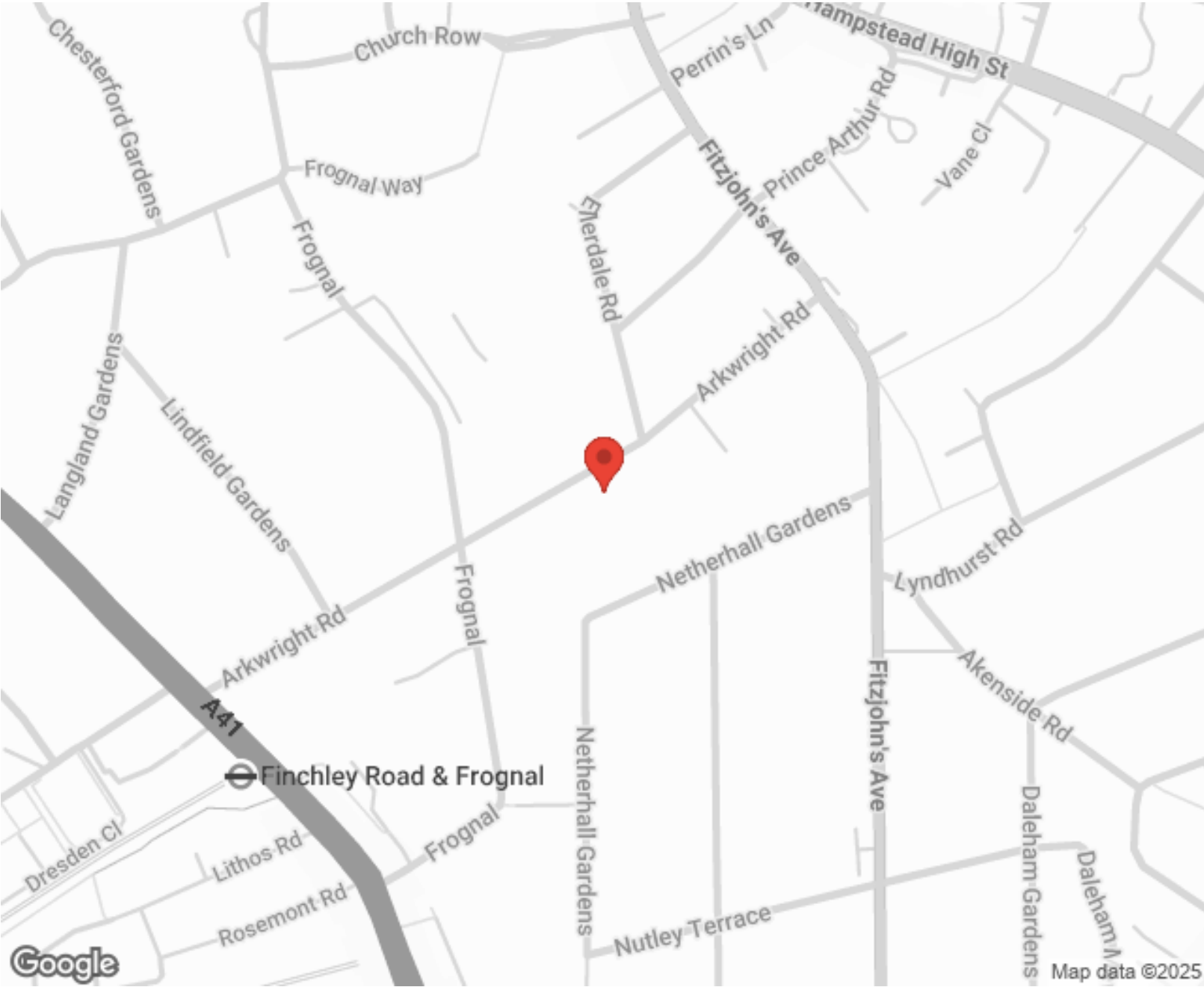
---



MORE INFO, PICTURES,  
CONTACT ON  
OUR WEBSITE



"Vita Properties is a very professional agency. My experience with them was incredible and the entire team was very helpful and kind throughout the renting process. I'd highly recommend!"



SCAN FOR MORE  
GOOGLE REVIEWS

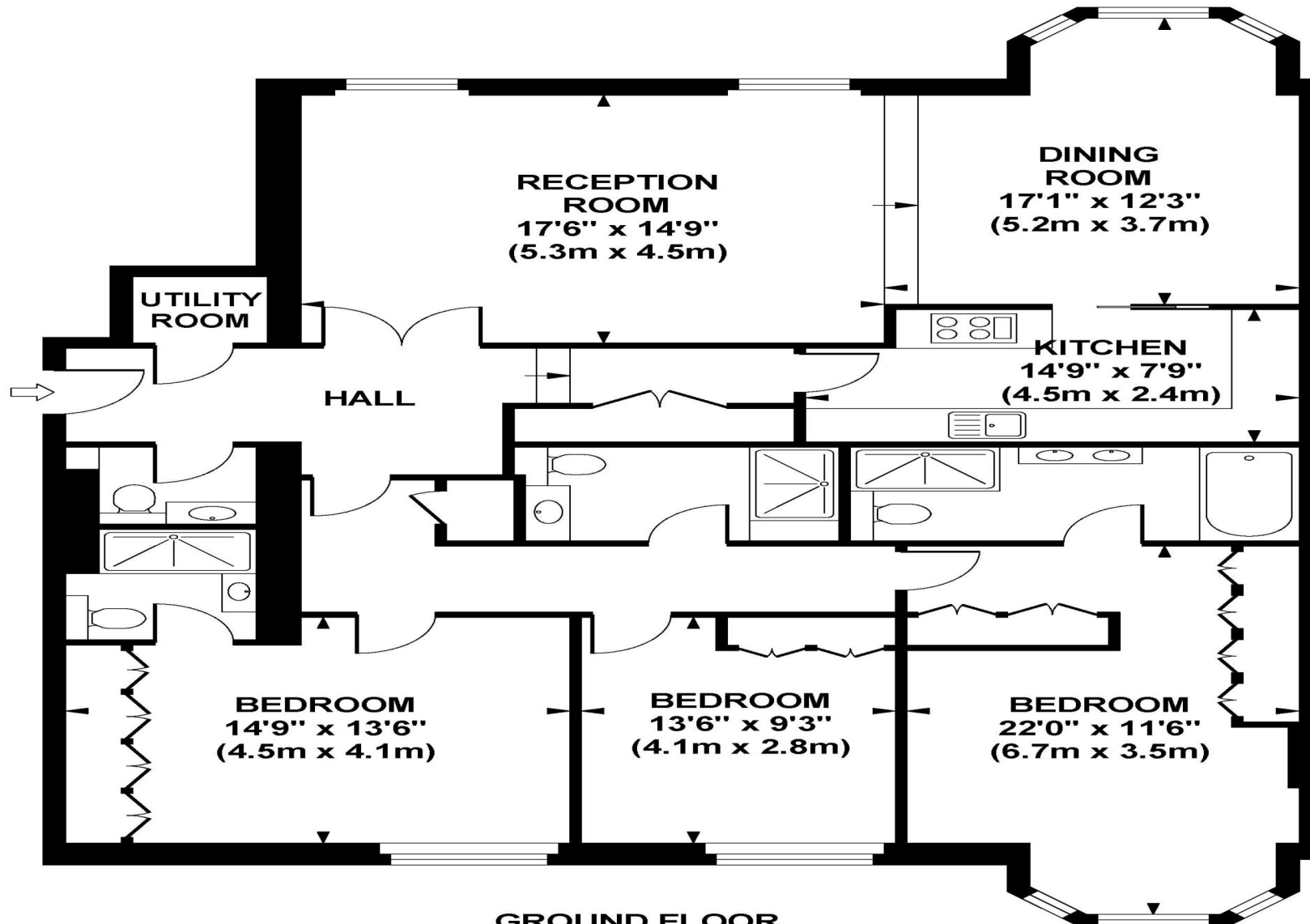
Google  
★★★★★  
4.9 Stars | 132 Reviews

Find us on social media

- vitaproperties
- VitaProperties
- VitaProperties

## ARKWRIGHT ROAD

Approximate Gross Internal Area 1588 sq ft / 147.5 sq m



**GROUND FLOOR  
GROSS INTERNAL  
FLOOR AREA 1588 SQ FT**

Although every attempt has been made to ensure accuracy, all measurements are approximate. The floor plan's for illustrative purposes only and not to scale. Measured in accordance to RICS standards.