



Portnall Road, London W9 .| £535,000

- High Ceilings
- Newly Refurbished
- Moments to Queens Park
- Close to Maida Vale





- Stunning Private Roof Terrace

"Vita Properties have been tremendously helpful throughout the process of securing/renting my flat. Informative about the property, prompt communication, easy to use dashboard for sharing of information, and pleasant to work with. Highly recommend!"

Presenting this newly refurbished two bed apartment, set on the first floor of this lovely Victorian building, located on a quiet, residential street in W9!

This property comprises of a modern, open-plan reception room and bespoke kitchen, with beautiful, light-enhancing bay windows, sleek cabinets and hard-wood floors; large master bedroom with direct access to a stunning roof terrace, smaller double bedroom with built-in storage, and finally a contemporary shower room. The recent refurbishment has been carried out with the greatest of care and attention to detail.

Conveniently located for a plethora of amenities from Queen's Park, Maida Vale and Notting Hill, and with great transport links from Queen's Park station (Bakerloo line and London Overground), Westbourne Park station (Hammersmith & City and Circle line) and Paddington Station (Overground & Heathrow Express). This incredible location beautifully blends convenience with beautiful environments, such as the luscious green spaces of Queen's Park & Paddington Recreation Ground.

	Flat
	
	x 2
	x 1
	x 1



Oliver Kent

 oliver.kent@vitaproperties.uk
 +4477 7274 0351



"I was very impressed with Vita and their network of buyers. When the sale of my flat fell through (twice) they worked extremely hard to find new buyers in a difficult market - thank you!"



"Working with Vita properties has been a smooth experience! No complaints at all. Our letting agent, Diana has been fantastic and very helpful throughout the whole process. I would highly recommend both Vita properties and Diana."



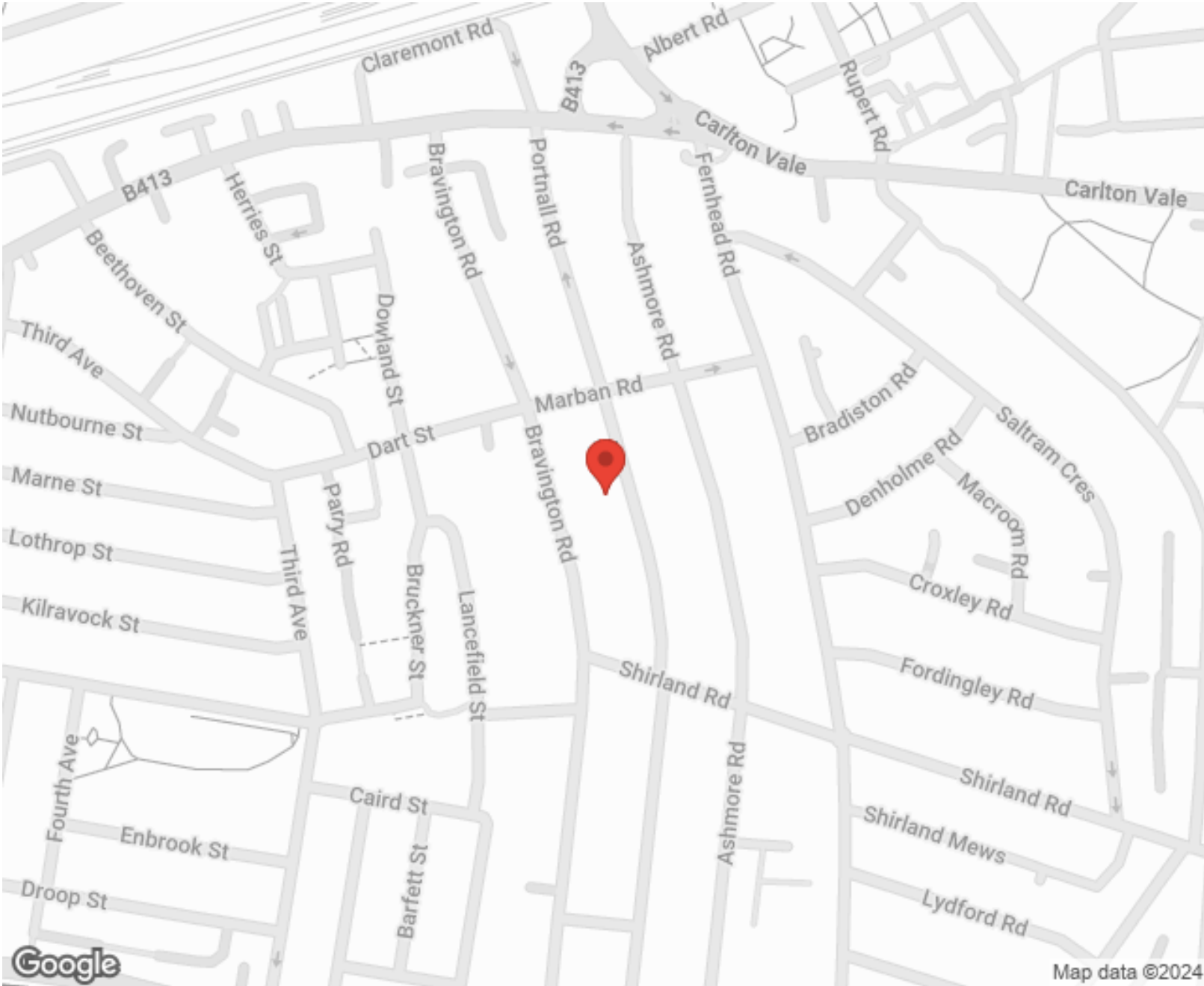
"I used Vita properties to find a flat recently and it was an overall professional, personalised and positive experience. Saira went the extra mile to accommodate to our needs and quick to help us whenever possible."



**MORE INFO, PICTURES,
CONTACT ON
OUR WEBSITE**



"Vita Properties is a very professional agency. My experience with them was incredible and the entire team was very helpful and kind throughout the renting process. I'd highly recommend!"



Energy Efficiency Rating		
	Current	Potential
Very energy efficient - lower running costs		
(92-100) A		
(81-91) B		
(69-80) C		
(55-68) D		
(39-54) E		
(21-38) F		
(1-20) G		
Not energy efficient - higher running costs		
England, Scotland & Wales		
EU Directive 2002/91/EC		

SCAN FOR MORE
GOOGLE REVIEWS




Google



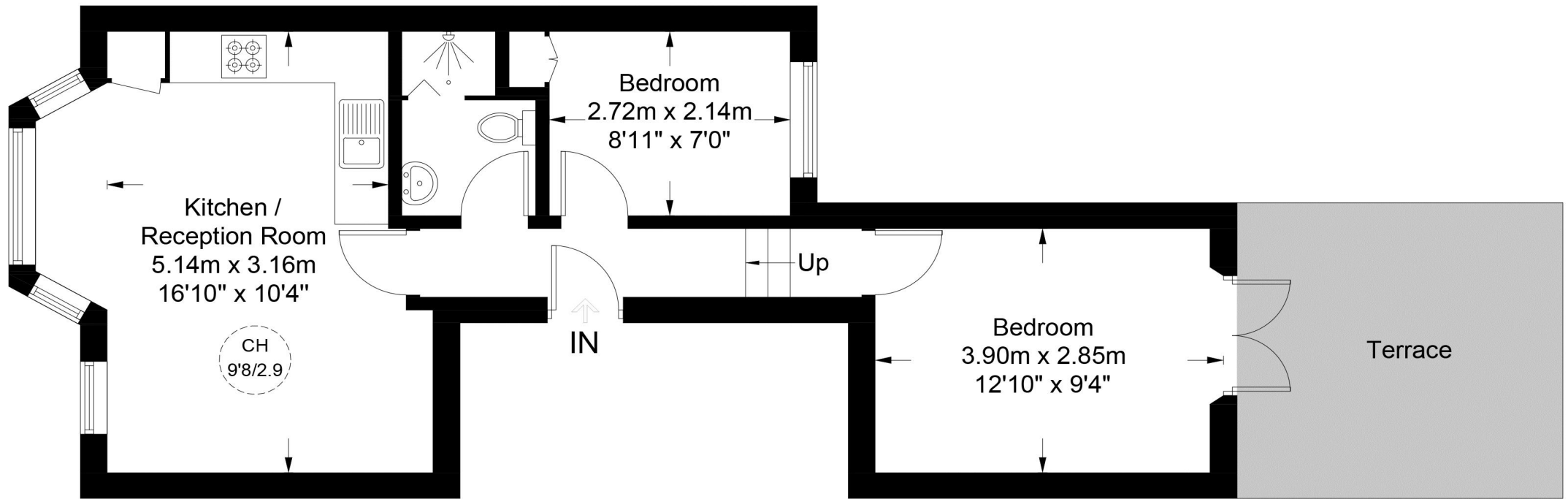
4.9 Stars | 132 Reviews

Find us on social media

-  vitaproperties
-  VitaProperties
-  VitaProperties

166 Portnall Road, W9

Approximate Gross Internal Area = 481 sq ft / 44.7 sq m



First Floor

This plan is for layout guidance only. Not drawn to scale unless stated. Windows and door openings are approximate. Whilst every care is taken in the preparation of this plan, please check all dimensions, shapes and compass bearings before making any decisions reliant upon them. (ID796012)