



West Heath Place, 1B Hodford Road, London, NW11 . | £2,300

- Three double bedroom suites each with en-suite bathrooms
- Concierge
- Modern and spacious open-plan Poggenpohl integrated kitchen
- Underfloor heating throughout and air conditioning to principal rooms
- Access to the lovely communal garden and gym
- Two underground garage spaces

"Vita Properties have been tremendously helpful throughout the process of securing/renting my flat. Informative about the property, prompt communication, easy to use dashboard for sharing of information, and pleasant to work with. Highly recommend!"

A spectacular, luxury three double bedroom, three bathroom penthouse apartment comprising 2700 sq ft / 249 sq m set within a prestigious development with stunning panoramic views over the South and West London skyline. The apartment comprises a large reception room with fireplace, modern open plan Poggenpohl kitchen/breakfast room with separate utility room, guest wc,, three private balconies, storage room and two underground parking spaces. Other features include air conditioning to principal rooms, a private gym for residents of the building and a communal garden. Available immediately on a furnished or unfurnished basis.



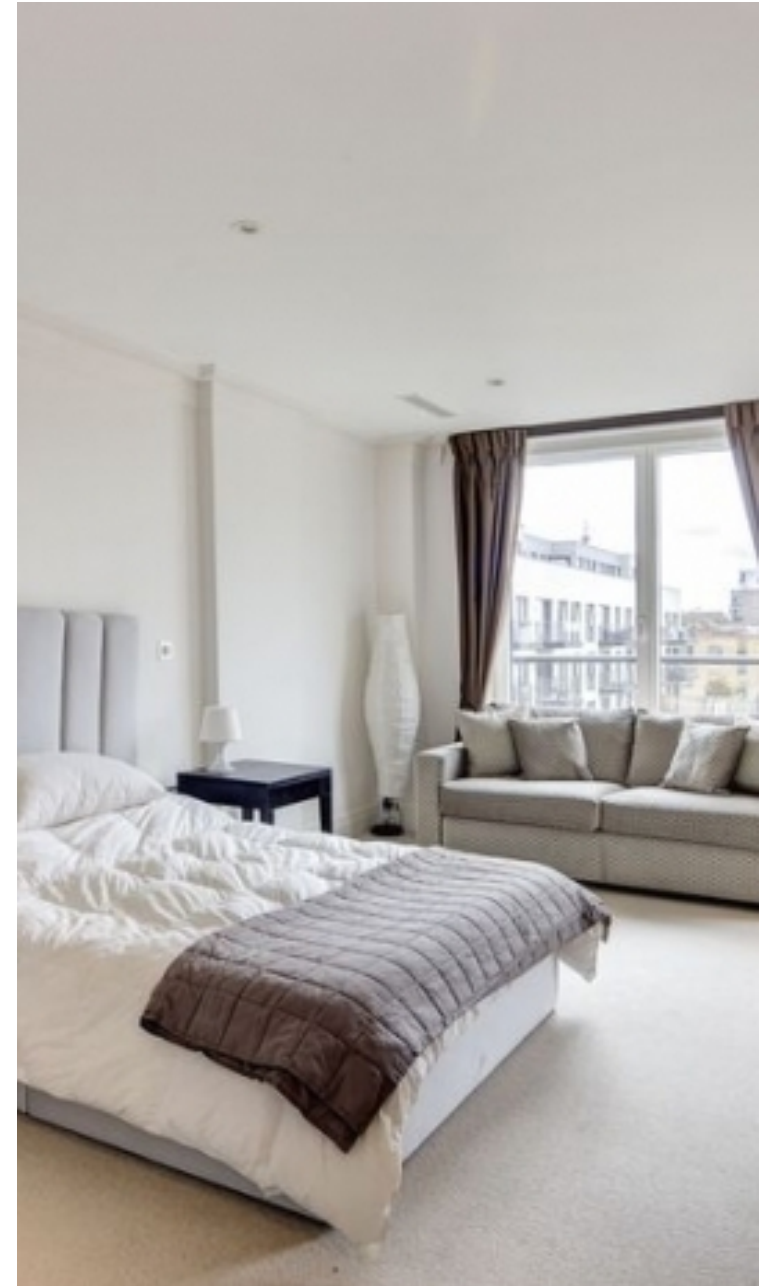
Oliver Kent

✉ oliver.kent@vitaproperties.uk
☎ +4477 7274 0351



🏠 Flat
🔑 Available
to Let
🛏 x 3
🛋 x 2
🚿 x 3

"I was very impressed with Vita and their network of buyers. When the sale of my flat fell through (twice) they worked extremely hard to find new buyers in a difficult market - thank you!"



"Working with Vita properties has been a smooth experience! No complaints at all. Our letting agent, Diana has been fantastic and very helpful throughout the whole process. I would highly recommend both Vita properties and Diana."



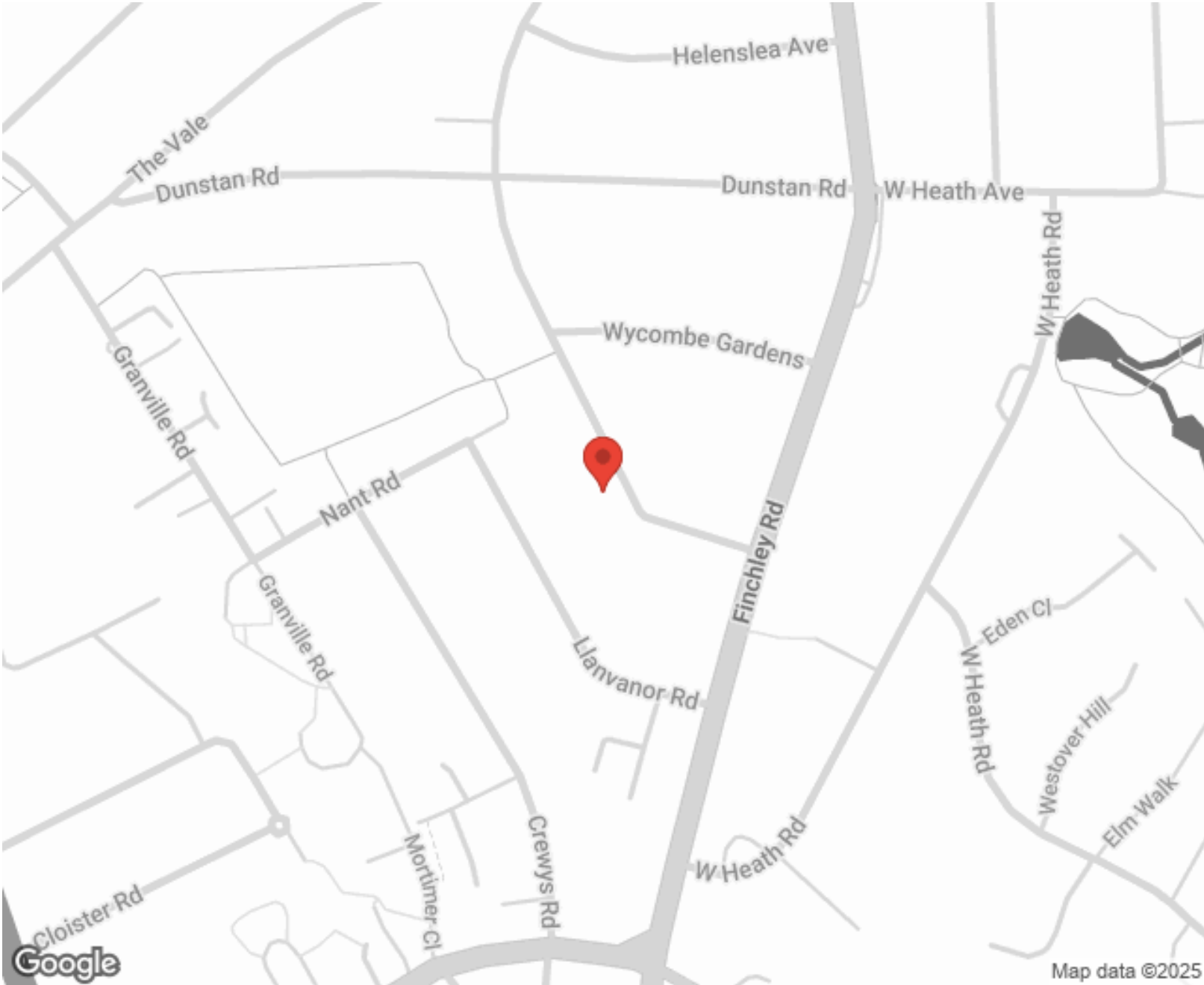
"I used Vita properties to find a flat recently and it was an overall professional, personalised and positive experience. Saira went the extra mile to accommodate to our needs and quick to help us whenever possible."



MORE INFO, PICTURES,
CONTACT ON
OUR WEBSITE



"Vita Properties is a very professional agency. My experience with them was incredible and the entire team was very helpful and kind throughout the renting process. I'd highly recommend!"



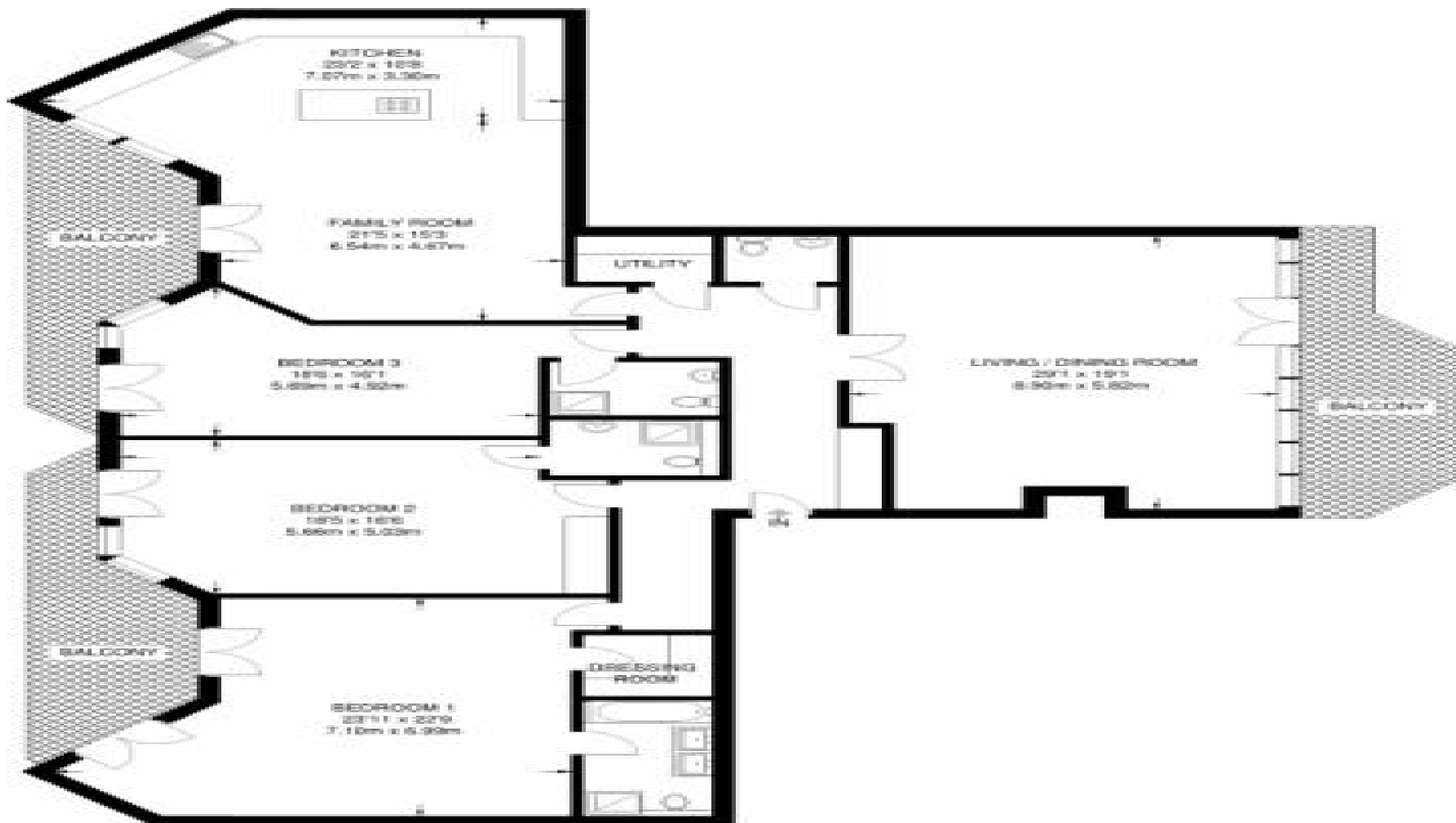
Energy Efficiency Rating			Environmental Impact (CO ₂) Rating		
	Current	Potential		Current	Potential
Very energy efficient - lower running costs			Very environmentally friendly - lower CO ₂ emissions		
(92-100) A			(82-100) A		
(81-91) B			(81-91) B		
(69-80) C			(69-80) C		
(55-68) D			(55-68) D		
(39-54) E			(39-54) E		
(21-38) F			(21-38) F		
(1-20) G			(1-20) G		
Not energy efficient - higher running costs			Not environmentally friendly - higher CO ₂ emissions		
England, Scotland & Wales			England, Scotland & Wales		
EU Directive			EU Directive		

SCAN FOR MORE
GOOGLE REVIEWS

Google
★★★★★
4.9 Stars | 132 Reviews

Find us on social media

vitaproperties
 VitaProperties
 VitaProperties



FIFTH FLOOR
2663 SQ FT / 249.0 SQ M