



VITA
Properties

Adelaide Road, Swiss Cottage, London, NW3 | £1,000,000

- South facing
- Interior designed
- Close to St Johns Wood High Street & Swiss Cottage Tube
- Portered mansion block

- Three double bedrooms - Two bathrooms
- Long Lease

"Vita Properties have been tremendously helpful throughout the process of securing/renting my flat. Informative about the property, prompt communication, easy to use dashboard for sharing of information, and pleasant to work with. Highly recommend!"

We are delighted to offer this exquisite recently refurbished interior designed apartment in the heart of Swiss Cottage. The south facing second floor apartment of a 1930's portered mansion block that features an ample amount of natural light and boasting over 1300 sq ft has very recently gone through a complete renovation with modern fixtures and fittings. Comprising of a large double aspect living room, high-spec bespoke german kitchen/diner, three double bedrooms with fitted wardrobes, italian family bathroom, shower room and guest cloak room. The property is located on the borders of St Johns Wood and Swiss cottage, benefiting from short walk to Primrose Hill and trendy St Johns Wood High Street. The property also provides great storage throughout, fantastic transport links and convenience of local amenities of Swiss Cottage and Finchley Road.

-  Flat
-  Leasehold
-  x 3
-  x 2
-  x 2

SCAN FOR
A VIDEO
WALKTHROUGH



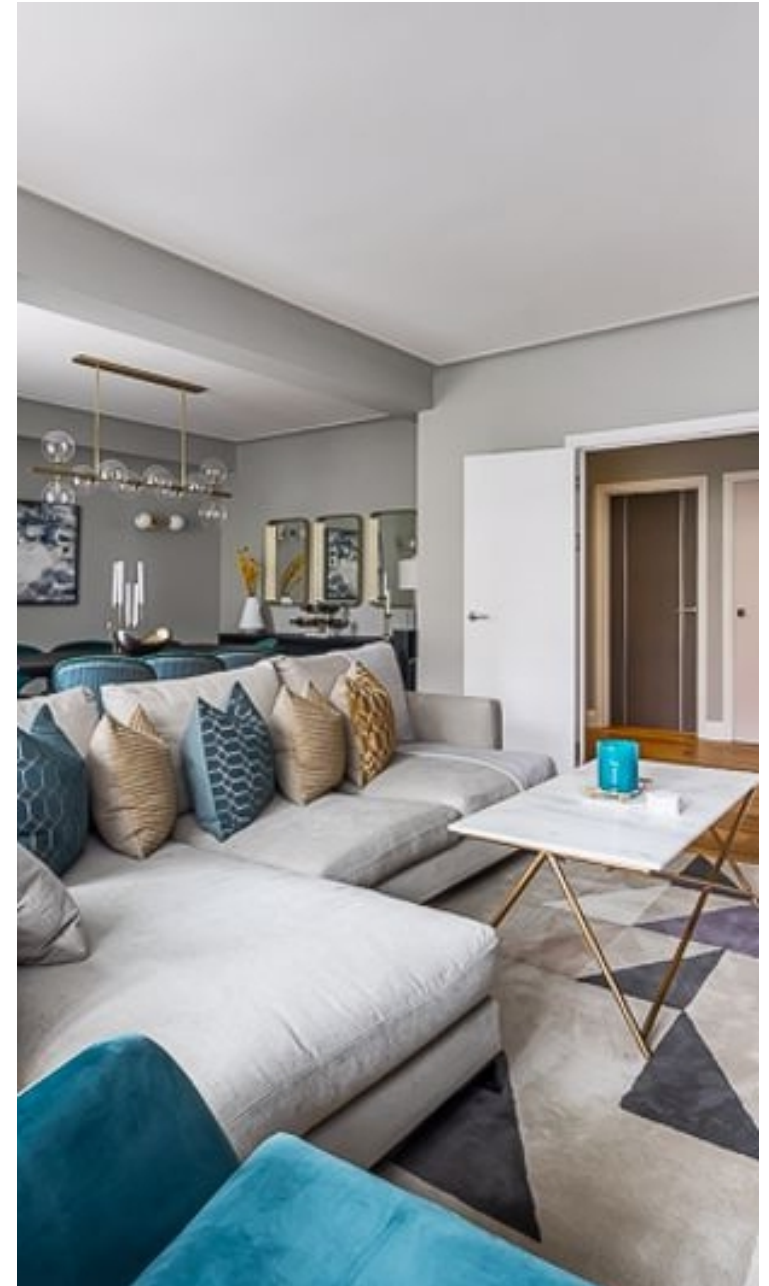
Oliver Kent

 oliver.kent@vitaproperties.uk

 +4477 7274 0351



"I was very impressed with Vita and their network of buyers. When the sale of my flat fell through (twice) they worked extremely hard to find new buyers in a difficult market - thank you!"



"Working with Vita properties has been a smooth experience! No complaints at all. Our letting agent, Diana has been fantastic and very helpful throughout the whole process. I would highly recommend both Vita properties and Diana."



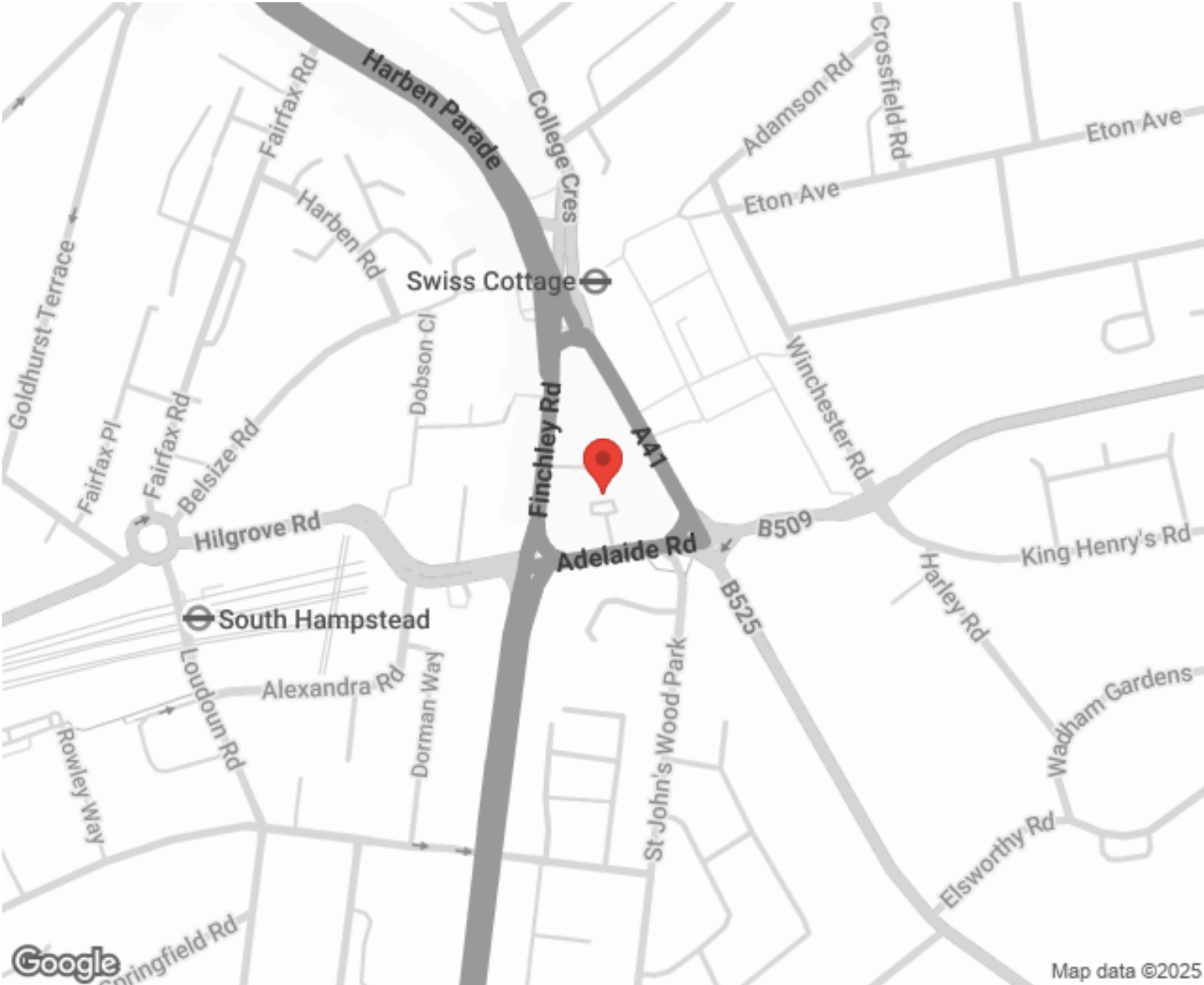
"I used Vita properties to find a flat recently and it was an overall professional, personalised and positive experience. Saira went the extra mile to accommodate to our needs and quick to help us whenever possible."



MORE INFO, PICTURES,
CONTACT ON
OUR WEBSITE



"Vita Properties is a very professional agency. My experience with them was incredible and the entire team was very helpful and kind throughout the renting process. I'd highly recommend!"



Energy Efficiency Rating			Environmental Impact (CO ₂) Rating		
	Current	Potential		Current	Potential
Very energy efficient - lower running costs			Very environmentally friendly - lower CO ₂ emissions		
(92-100) A		81	(92-100) A		80
(81-91) B			(81-91) B		
(69-80) C			(69-80) C		
(55-68) D	68		(55-68) D		63
(39-54) E			(39-54) E		
(21-38) F			(21-38) F		
(1-20) G			(1-20) G		
Not energy efficient - higher running costs			Not environmentally friendly - higher CO ₂ emissions		
England, Scotland & Wales			England, Scotland & Wales		
EU Directive			EU Directive		

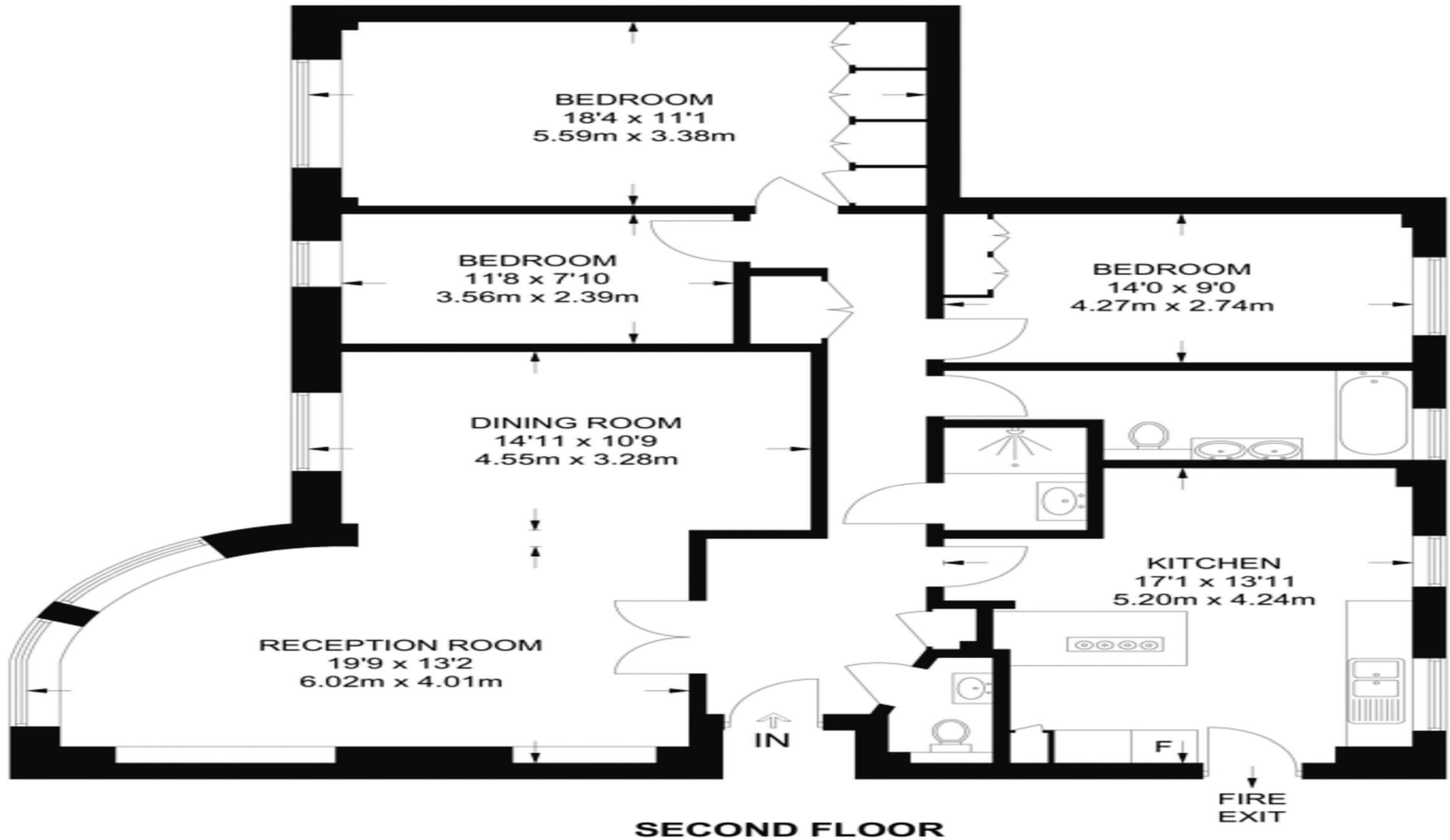
SCAN FOR MORE
GOOGLE REVIEWS

Google
★★★★★
4.9 Stars | 132 Reviews

Find us on social media

vitaproperties
 VitaProperties
 VitaProperties

APPROXIMATE FLOOR AREA = 1373 SQ FT / 127.6 SQ M
INCLUDING LIMITED USE AREA (31 SQ FT / 2.9 SQ M)



Surveyed and drawn in accordance with the International Property Measurement Standards (IPMS 2: Residential)

