



Avenue Mansions, Hampstead, London NW3 .| £1,300,000

- First Floor
- Lift
- High Ceilings
- Over 2000 SQFT

- Lateral Space

"Vita Properties have been tremendously helpful throughout the process of securing/renting my flat. Informative about the property, prompt communication, easy to use dashboard for sharing of information, and pleasant to work with. Highly recommend!"

Larger than average character filled first floor THREE BEDROOM apartment, with high ceilings throughout situated within this prestigious Mansion Block (BAM Estate). The property offers over 2000sq ft of lateral living and benefits from: Two large reception rooms retaining many original features, tiled kitchen/breakfast room, utility room, three bathrooms.

Further benefits include: Beautifully maintained landscaped communal gardens and a first class portorage/management service. The development is within walking distance to West Hampstead that offers a variety of popular shops, restaurants and coffee bars. Transportation links include West Hampstead tube station (Jubilee Line) and West Hampstead (Thames Link). Hampstead & Finchley Road transport links are also a short walk away. Viewings are highly recommended.

🏠 Flat
🔑
🛋️ x 3
📺 x 2
🚪 x 3



Oliver Kent

✉️ oliver.kent@vitaproperties.uk
☎️ +4477 7274 0351



"I was very impressed with Vita and their network of buyers. When the sale of my flat fell through (twice) they worked extremely hard to find new buyers in a difficult market - thank you!"



"Working with Vita properties has been a smooth experience! No complaints at all. Our letting agent, Diana has been fantastic and very helpful throughout the whole process. I would highly recommend both Vita properties and Diana."



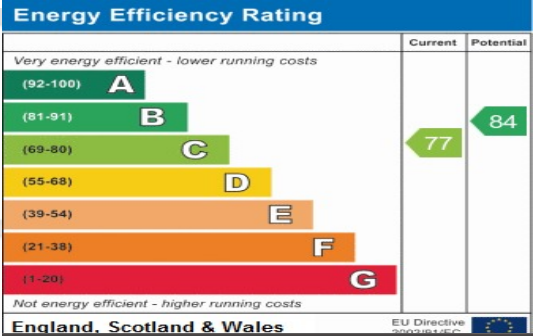
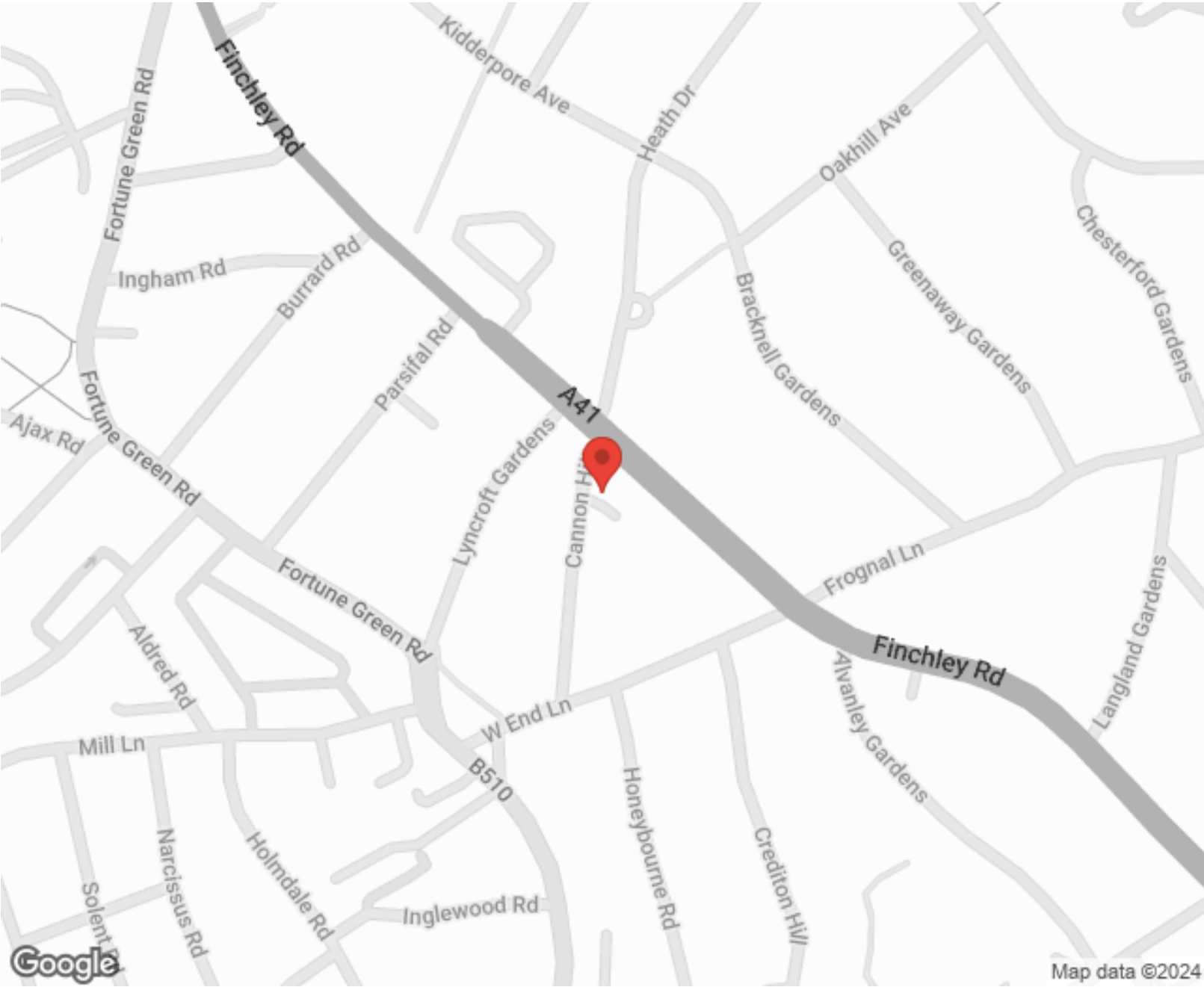
"I used Vita properties to find a flat recently and it was an overall professional, personalised and positive experience. Saira went the extra mile to accommodate to our needs and quick to help us whenever possible."



**MORE INFO, PICTURES,
CONTACT ON
OUR WEBSITE**



"Vita Properties is a very professional agency. My experience with them was incredible and the entire team was very helpful and kind throughout the renting process. I'd highly recommend!"



SCAN FOR MORE
GOOGLE REVIEWS

Google
★★★★★
4.9 Stars | 132 Reviews

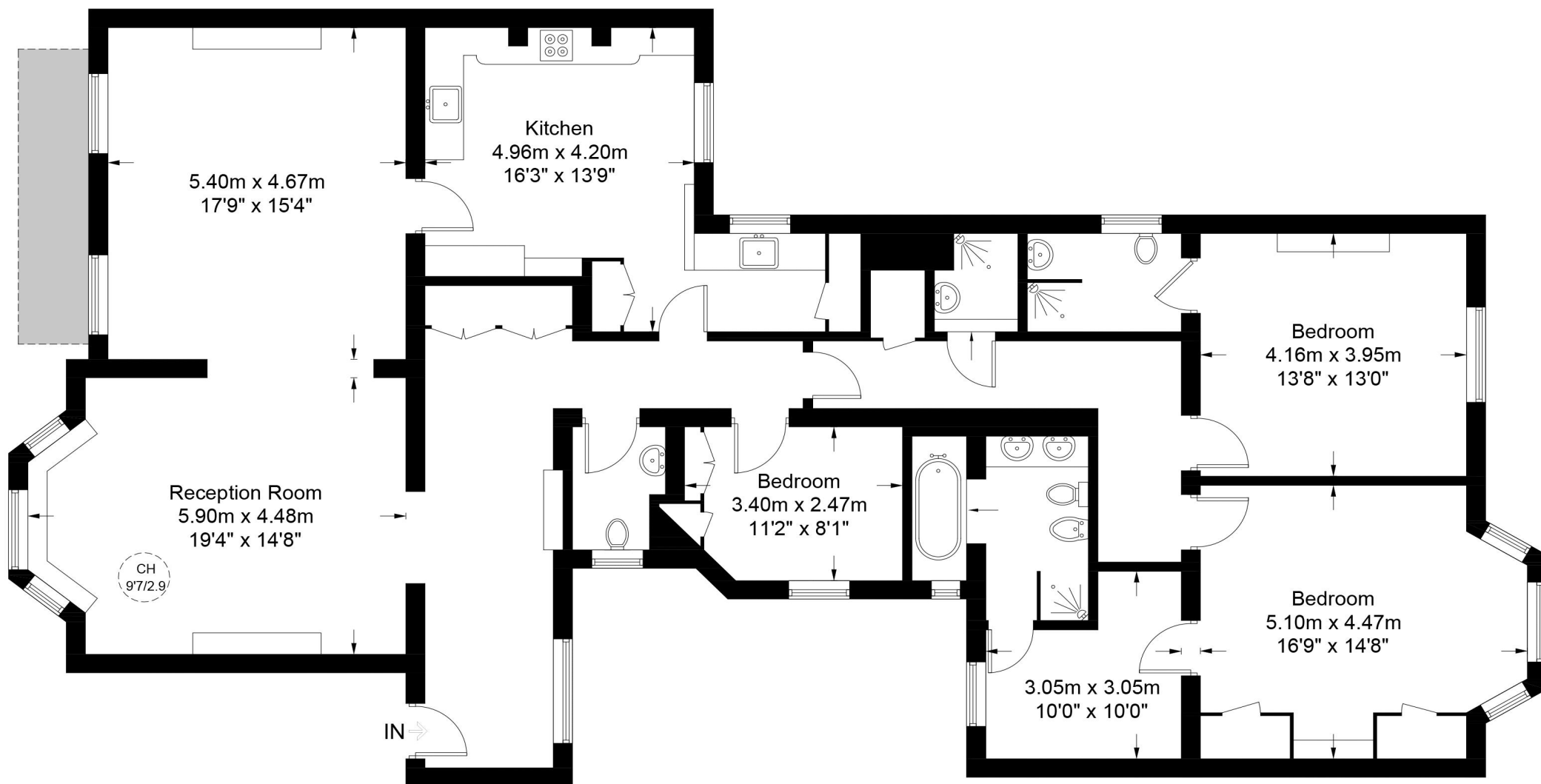
Find us on social media

- vitaproperties
- VitaProperties
- VitaProperties



Avenue Mansions, NW37AU

Approximate Gross Internal Area = 2028 sq ft / 188.4 sq m



First Floor

This plan is for layout guidance only. Not drawn to scale unless stated. Windows and door openings are approximate. Whilst every care is taken in the preparation of this plan, please check all dimensions, shapes and compass bearings before making any decisions reliant upon them. (ID748766)