



## All Souls Church Conversion, Loudoun Road, London, NW8 | £485

- Church Conversion
- Gothic Style
- Managed
- Good transport links South Hampstead over ground, and Swiss cottage (jubilee Link)

- Underfloor heating
- Available 28th August

"Vita Properties have been tremendously helpful throughout the process of securing/renting my flat. Informative about the property, prompt communication, easy to use dashboard for sharing of information, and pleasant to work with. Highly recommend!"

---

Available 28th August – A spacious one bedroom apartment set on the ground floor of a fabulous church conversion conveniently located within walking distance to Swiss Cottage Underground station (Jubilee line) and South Hampstead Overground Station.

The property has retained many of its original Gothic features including stone painted arch windows and ornate column and comprises bedroom, fully tiled modern bathroom, wood floored reception room with open-plan fully fitted kitchen and balcony. Good transport links with South Hampstead over ground station and Swiss Cottage Jubilee Line Zone 2.



 Flat

 Available to Let

 x 1

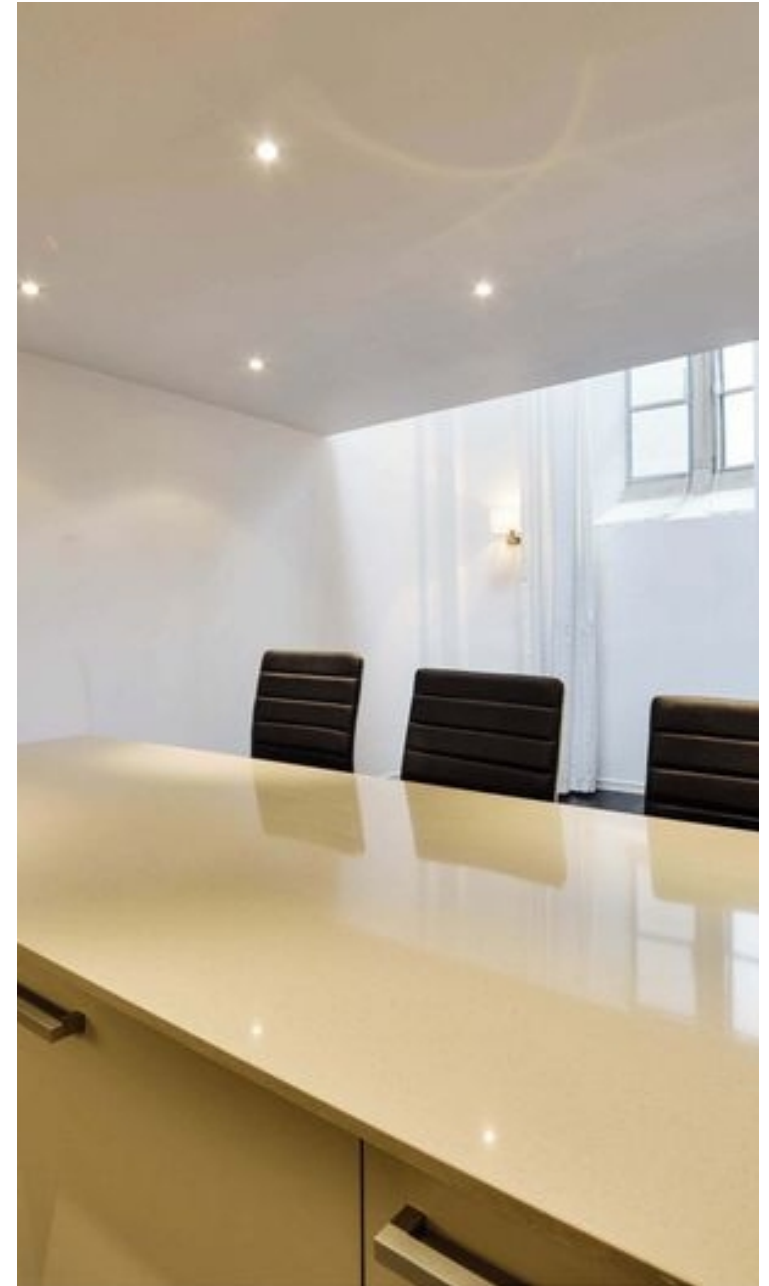
 x 1

 x 1



"I was very impressed with Vita and their network of buyers. When the sale of my flat fell through (twice) they worked extremely hard to find new buyers in a difficult market - thank you!"

---





"Working with Vita properties has been a smooth experience! No complaints at all. Our letting agent, Diana has been fantastic and very helpful throughout the whole process. I would highly recommend both Vita properties and Diana."

---



"I used Vita properties to find a flat recently and it was an overall professional, personalised and positive experience. Saira went the extra mile to accommodate to our needs and quick to help us whenever possible."

---

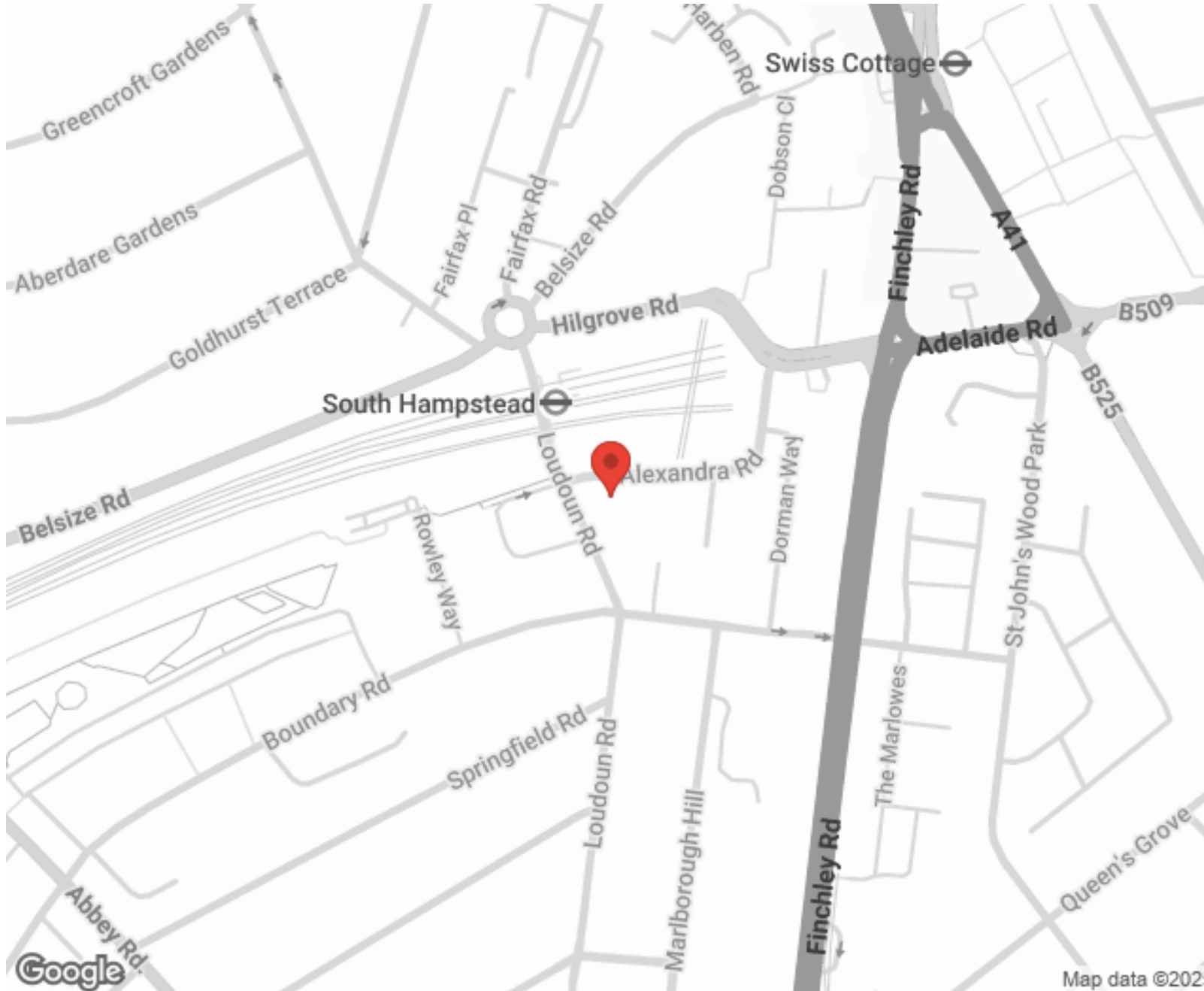


MORE INFO, PICTURES,  
CONTACT ON  
OUR WEBSITE



"Vita Properties is a very professional agency. My experience with them was incredible and the entire team was very helpful and kind throughout the renting process. I'd highly recommend!"

---



SCAN FOR MORE  
GOOGLE REVIEWS

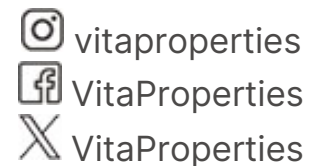


Google

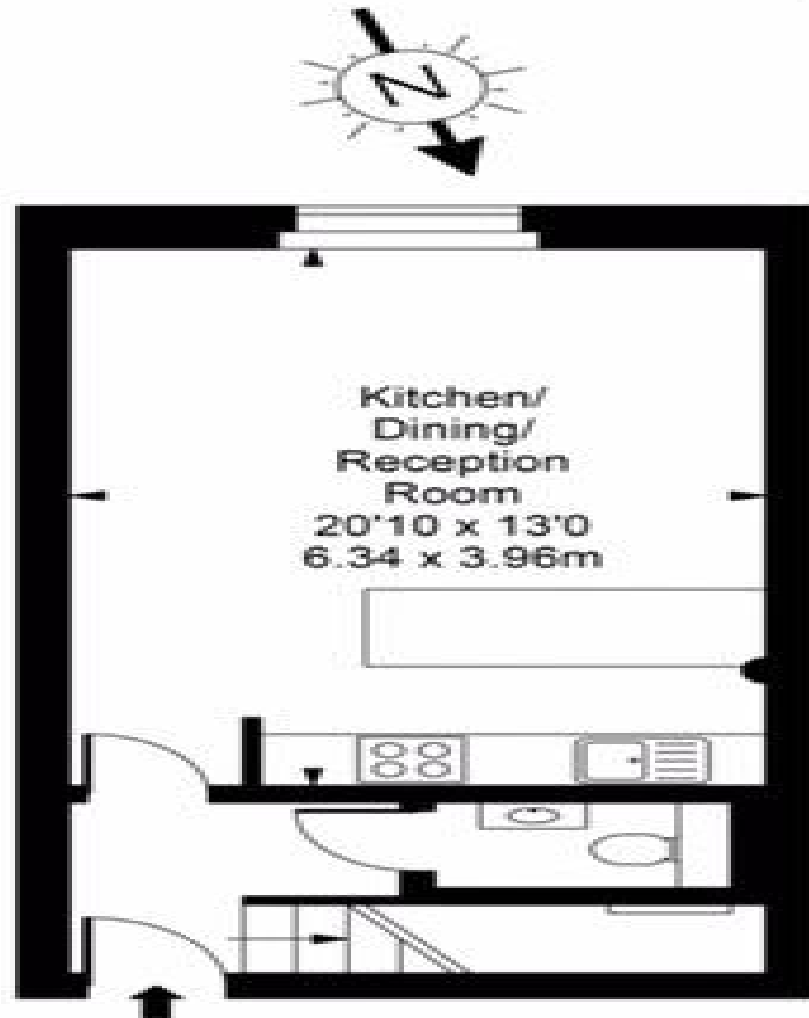


4.9 Stars | 132 Reviews

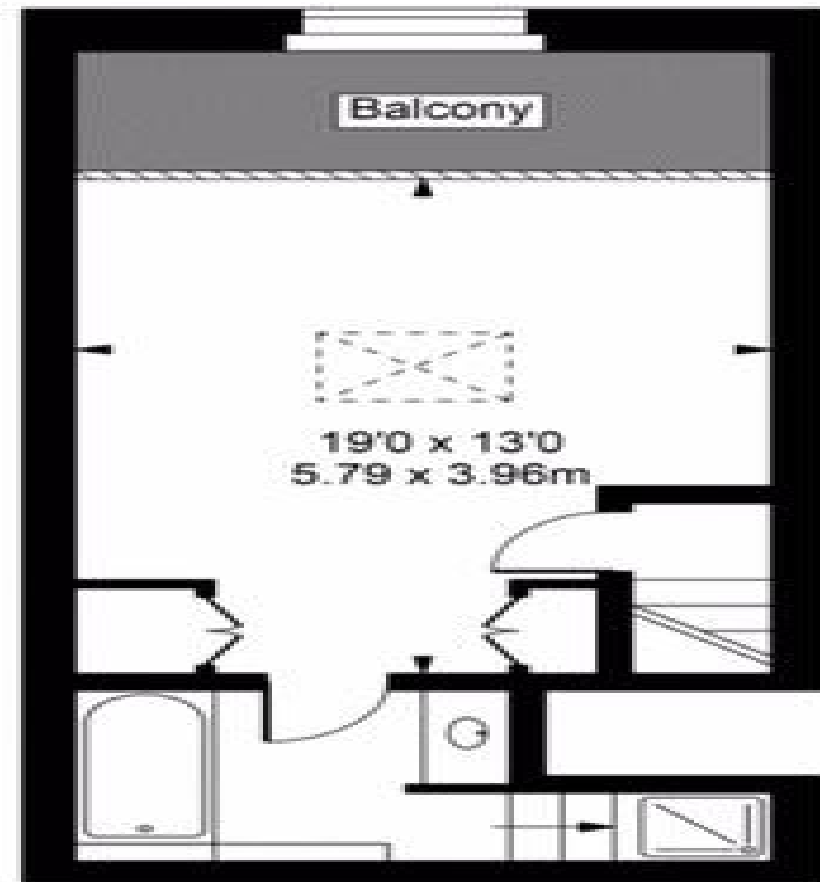
Find us on social media



## All Souls



Ground Floor



First Floor



Approx Gross Internal Area      **752 Sq Ft - 69.90 Sq M**

For Illustration Purposes Only - Not To Scale  
Floor plan by [www.creativeplanetik.com](http://www.creativeplanetik.com)