



College Crescent, Swiss Cottage, London NW3 | £550

- Heating & Hot water is included
- High Quality furniture
- Close to Primrose Hill, Regents Park and Hampstead Village
- Portered Block

- Offered on a furnished basis
- Available late October 2023

"Vita Properties have been tremendously helpful throughout the process of securing/renting my flat. Informative about the property, prompt communication, easy to use dashboard for sharing of information, and pleasant to work with. Highly recommend!"

We are delighted to present this newly refurbished 1 bed apartment in this well maintained development with a porter. Benefitting from modern fittings throughout and close proximity to Swiss Cottage Station.

Northway's is located close to Hampstead and Belsize Park, while also benefiting from the excellent selection of amenities on Finchley Road. Available late October & offered Furnished.



Zoe Browne

✉ zoe.browne@vitaproperties.uk

☎ +44 7880 277371



🏠	Flat
🔑	Under Negotiation
🛏	x 1
🛋	x 1
🪑	x 1



"I was very impressed with Vita and their network of buyers. When the sale of my flat fell through (twice) they worked extremely hard to find new buyers in a difficult market - thank you!"



"Working with Vita properties has been a smooth experience! No complaints at all. Our letting agent, Diana has been fantastic and very helpful throughout the whole process. I would highly recommend both Vita properties and Diana."



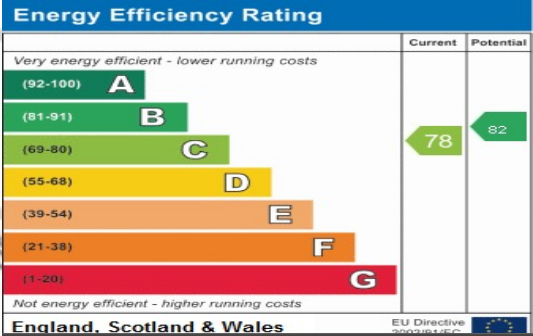
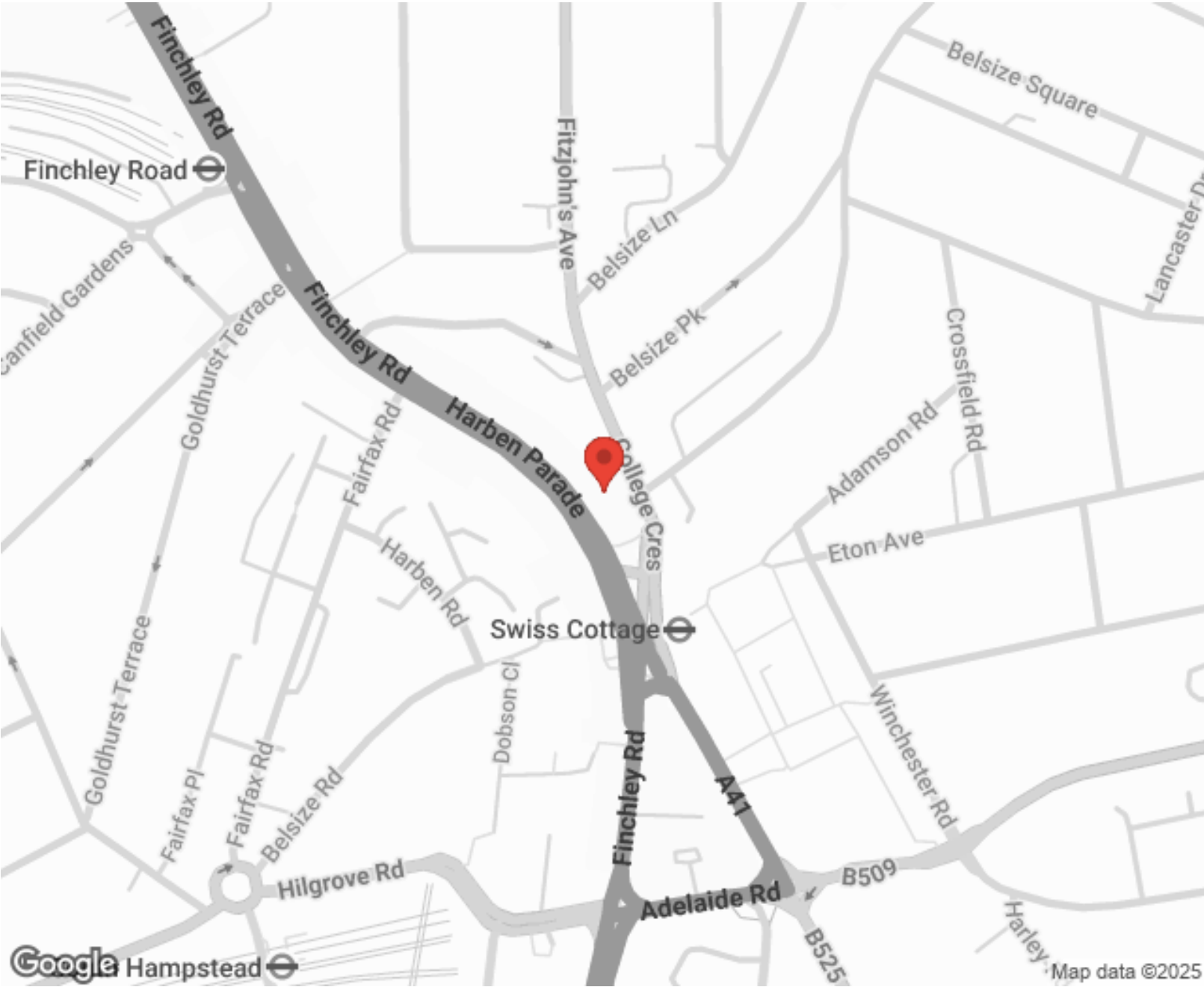
"I used Vita properties to find a flat recently and it was an overall professional, personalised and positive experience. Saira went the extra mile to accommodate to our needs and quick to help us whenever possible."



**MORE INFO, PICTURES,
CONTACT ON
OUR WEBSITE**



"Vita Properties is a very professional agency. My experience with them was incredible and the entire team was very helpful and kind throughout the renting process. I'd highly recommend!"



SCAN FOR MORE
GOOGLE REVIEWS



Google



4.9 Stars | 132 Reviews

Find us on social media



vitaproperties



VitaProperties

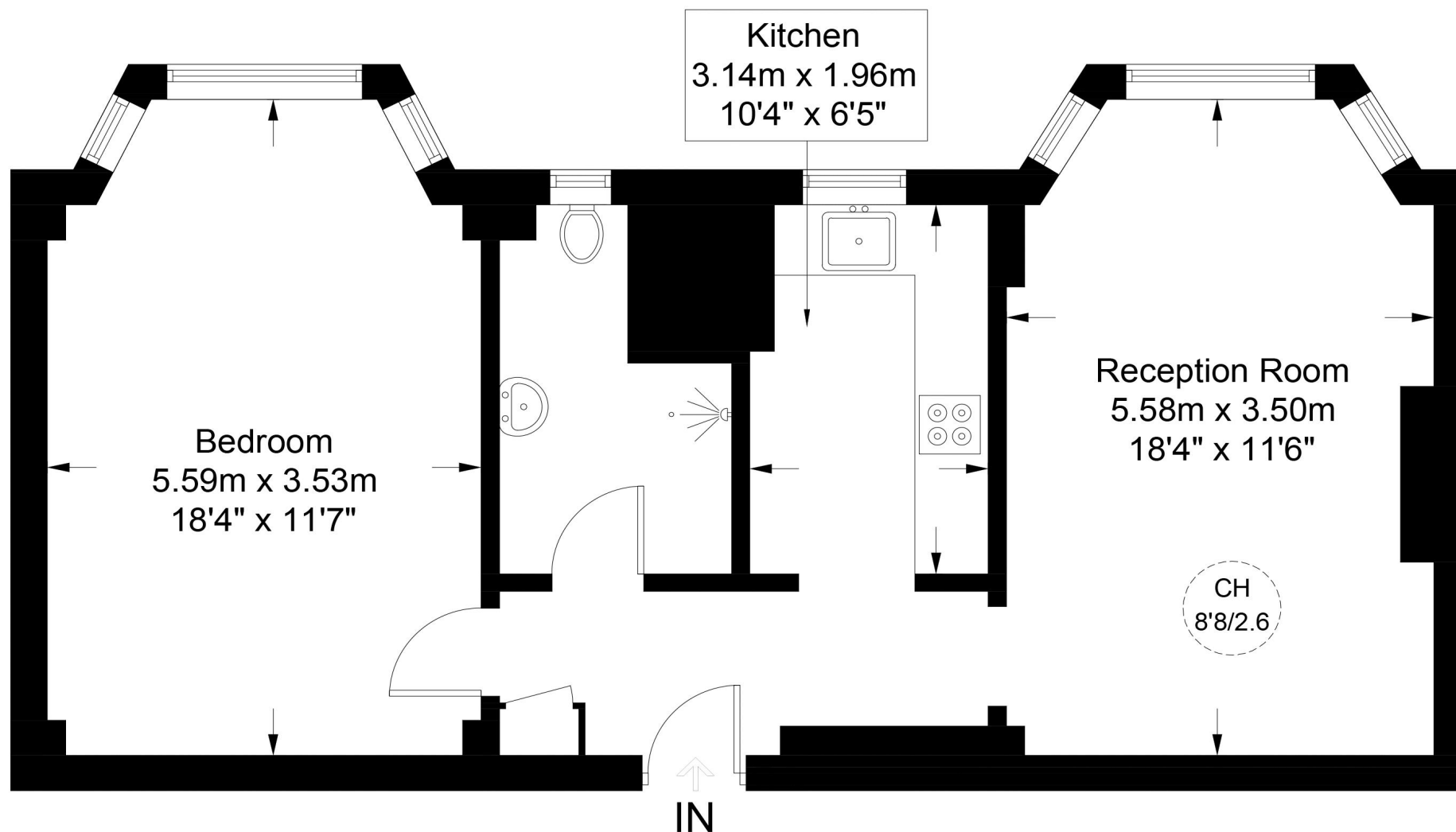


VitaProperties



Northways, NW3

Approximate Gross Internal Area = 621 sq ft / 57.7 sq m



Third Floor

This plan is for layout guidance only. Not drawn to scale unless stated. Windows and door openings are approximate. Whilst every care is taken in the preparation of this plan, please check all dimensions, shapes and compass bearings before making any decisions reliant upon them. (ID690967)