



Elgin Avenue, Maida Vale, London W9 . | £500,000

- One bed
- Open plan
- Abundance of Outside Space
- Fitted Wardrobes

- Bright & Airy
- Close to Little Venice, Westbourne Grove & Notting Hill.

"Vita Properties have been tremendously helpful throughout the process of securing/renting my flat. Informative about the property, prompt communication, easy to use dashboard for sharing of information, and pleasant to work with. Highly recommend!"


Presenting this incredible, one bed, one bath apartment with an abundance of outside space. Comprising of a large, open-plan reception and kitchen with doors leading through to the amazing private garden space. Close to Little Venice, Westbourne Grove & Notting Hill.





Oliver Kent


✉ oliver.kent@vitaproperties.uk
☎ +4477 7274 0351




 Flat



 x 1

 x 1

 x 1



"I was very impressed with Vita and their network of buyers. When the sale of my flat fell through (twice) they worked extremely hard to find new buyers in a difficult market - thank you!"



"Working with Vita properties has been a smooth experience! No complaints at all. Our letting agent, Diana has been fantastic and very helpful throughout the whole process. I would highly recommend both Vita properties and Diana."



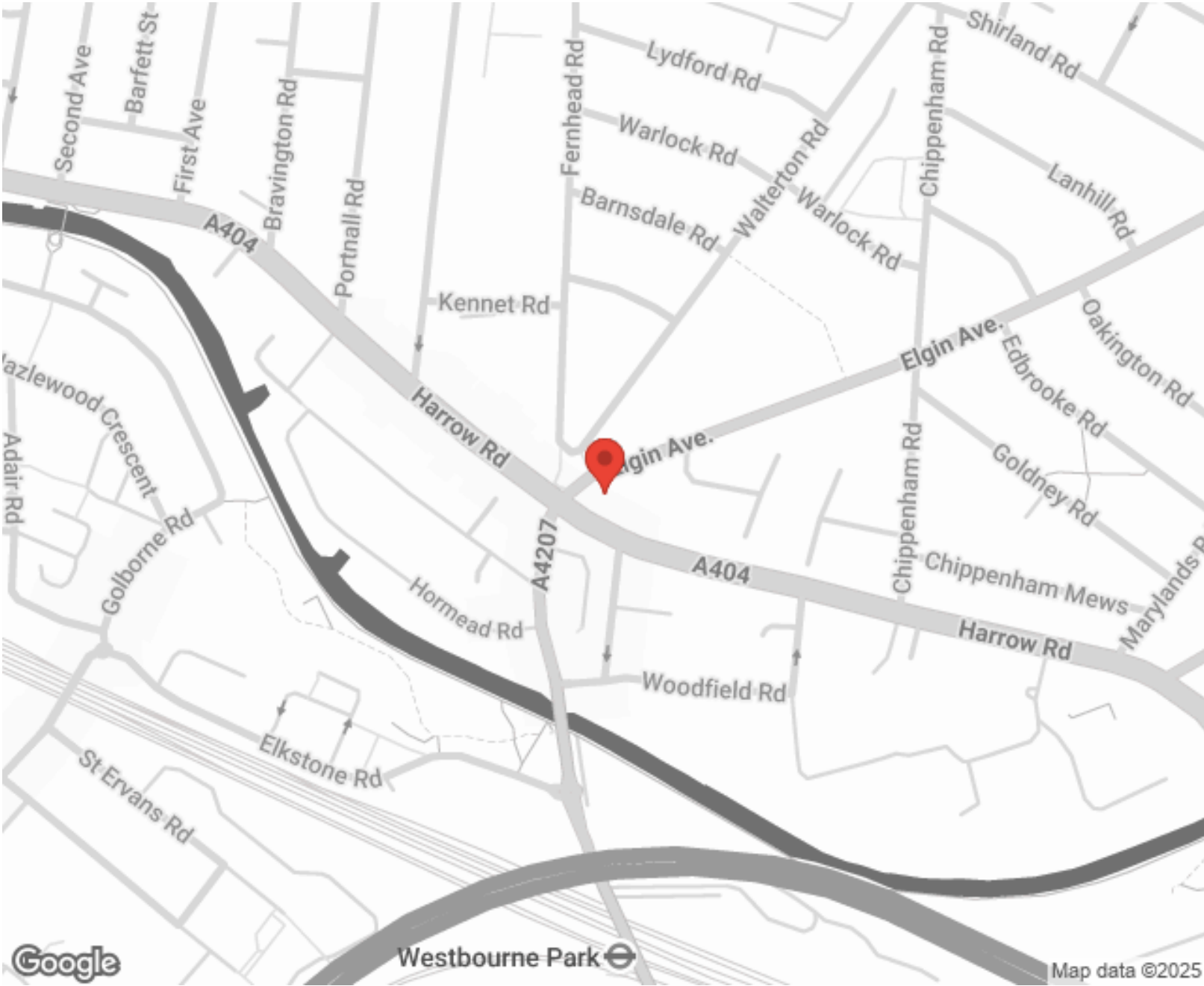
"I used Vita properties to find a flat recently and it was an overall professional, personalised and positive experience. Saira went the extra mile to accommodate to our needs and quick to help us whenever possible."



**MORE INFO, PICTURES,
CONTACT ON
OUR WEBSITE**



"Vita Properties is a very professional agency. My experience with them was incredible and the entire team was very helpful and kind throughout the renting process. I'd highly recommend!"



Energy Efficiency Rating		
	Current	Potential
Very energy efficient - lower running costs		
(92-100) A		
(81-91) B	82	82
(69-80) C		
(55-68) D		
(39-54) E		
(21-38) F		
(1-20) G		
Not energy efficient - higher running costs		
England, Scotland & Wales		
EU Directive 2002/91/EC		

SCAN FOR MORE
GOOGLE REVIEWS






Google



4.9 Stars | 132 Reviews

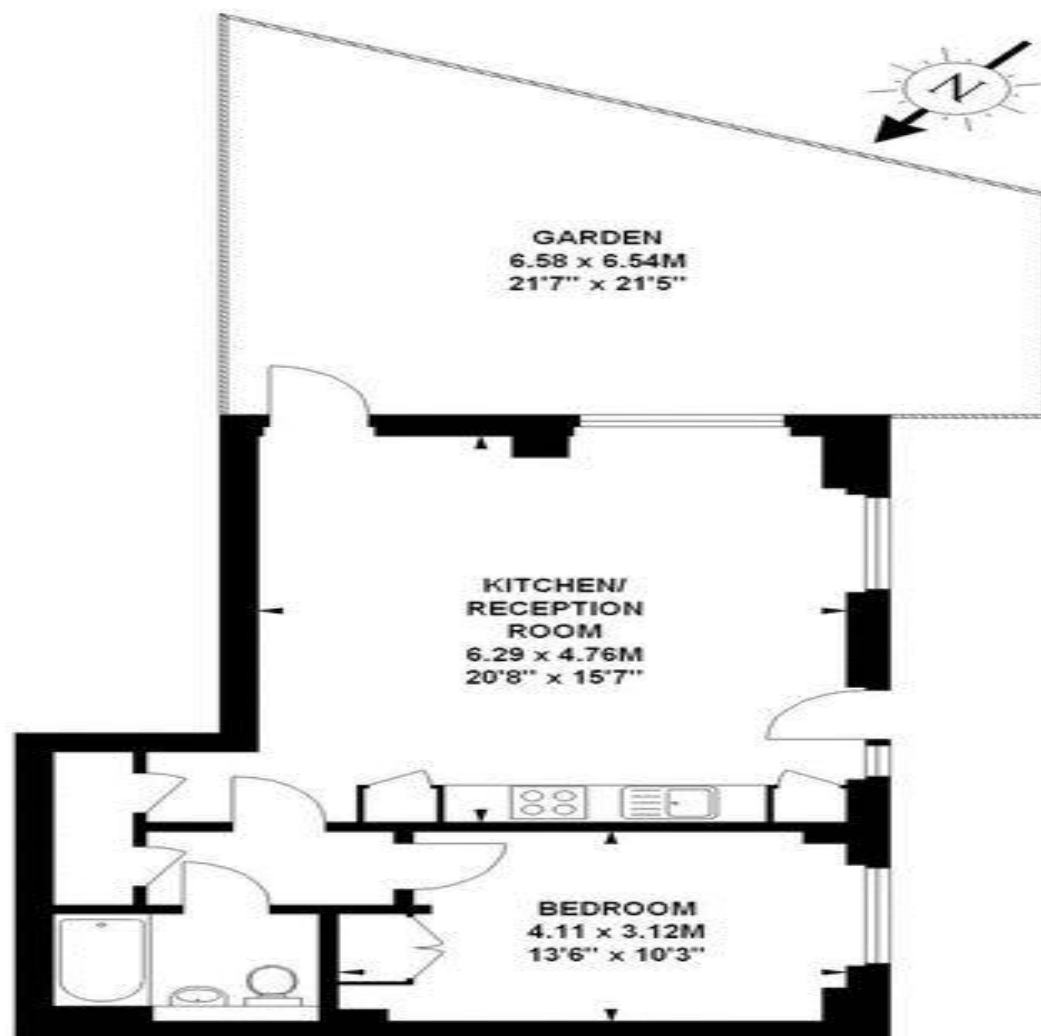
Find us on social media

-  vitaproperties
-  VitaProperties
-  VitaProperties

Elgin Avenue, W9

Approximate gross internal area

53.42 sq m / 575 sq ft



Ground Floor

The floor plan is not to scale and measurements and areas shown are approximate and therefore should be used for illustrative purposes only. The plan has been prepared in accordance with the RICS code of Measuring Practice and whilst we have confidence in the information produced, it must be not be relied on. If there is any aspect of particular importance, you should carry out or commission your own inspection of the property.

Copyright of FeaturePRO.