



VITA
Properties

Arkwright Mansions Finchley Road, Hampstead, London NW3 .| £1,495,000

- Turn Key
- 4 Bedrooms - 2 Receptions
- 4th floor with Lift
- 1880 sq ft/175 sq m






- Chain free

"Vita Properties have been tremendously helpful throughout the process of securing/renting my flat. Informative about the property, prompt communication, easy to use dashboard for sharing of information, and pleasant to work with. Highly recommend!"

Presenting this bright and spacious, four-bed apartment located in this period mansion block 'Arkwright Mansions', NW3.

Situated on the fourth floor (with lift access) this delightful home comprises of an inviting, open-plan reception room, large dining room; contemporary kitchen/ breakfast room; three enormous, light-flooded bedrooms, fourth smaller double bedroom with access onto a private West-facing balcony; three-piece family bathroom with 'his & hers' sinks and a guest WC. This exceptional property boasts high ceilings, multiple feature fireplaces, ample storage and a pleasing mixture of hardwood and parquet flooring throughout. Residents in Arkwright Mansions also benefit from access to lovely communal gardens.

Ideally situated just moments from Finchley Road & Frognal (Overground) and within a short walking distance to both Hampstead Station (Northern Line) and Finchley Road Underground (Jubilee, Metropolitan Line) and the plethora of nearby boutique shops, café's, restaurants and luscious green open spaces of Hampstead.

- | | |
|---|------|
|  | Flat |
|  | |
|  | x 4 |
|  | x 2 |
|  | x 1 |

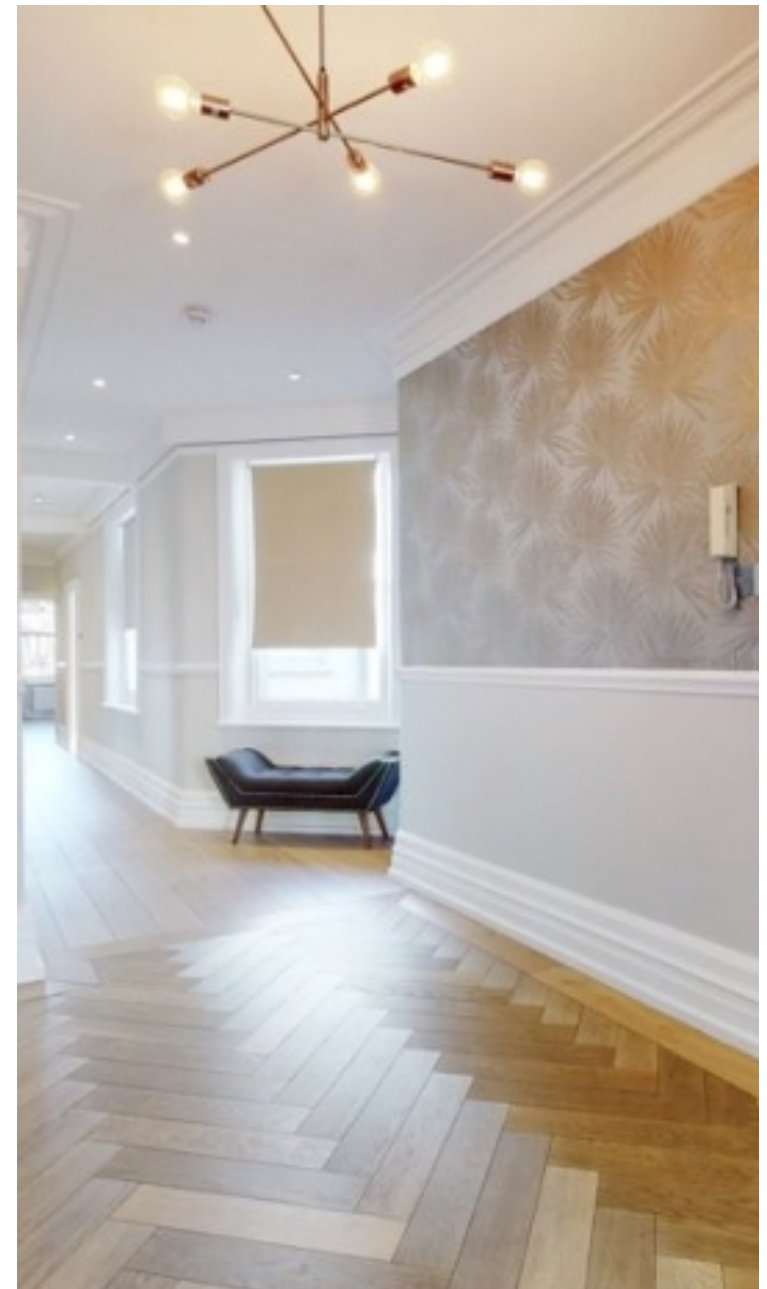


Oliver Kent

✉ oliver.kent@vitaproperties.uk
☎ +4477 7274 0351



"I was very impressed with Vita and their network of buyers. When the sale of my flat fell through (twice) they worked extremely hard to find new buyers in a difficult market - thank you!"



"Working with Vita properties has been a smooth experience! No complaints at all. Our letting agent, Diana has been fantastic and very helpful throughout the whole process. I would highly recommend both Vita properties and Diana."



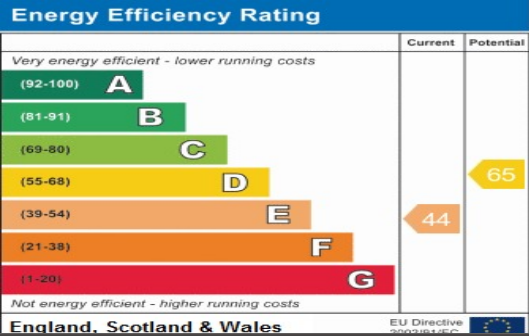
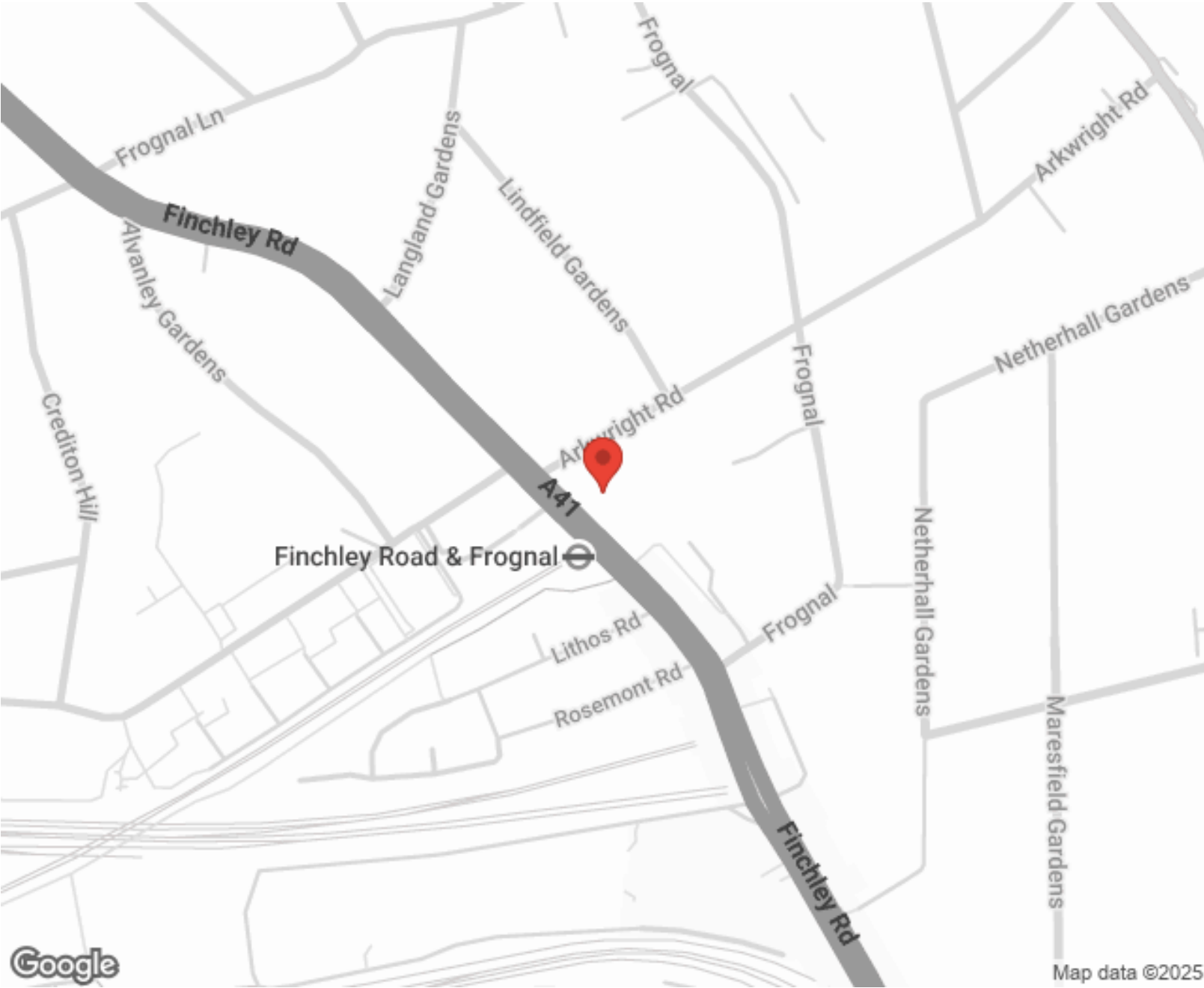
"I used Vita properties to find a flat recently and it was an overall professional, personalised and positive experience. Saira went the extra mile to accommodate to our needs and quick to help us whenever possible."



**MORE INFO, PICTURES,
CONTACT ON
OUR WEBSITE**



"Vita Properties is a very professional agency. My experience with them was incredible and the entire team was very helpful and kind throughout the renting process. I'd highly recommend!"

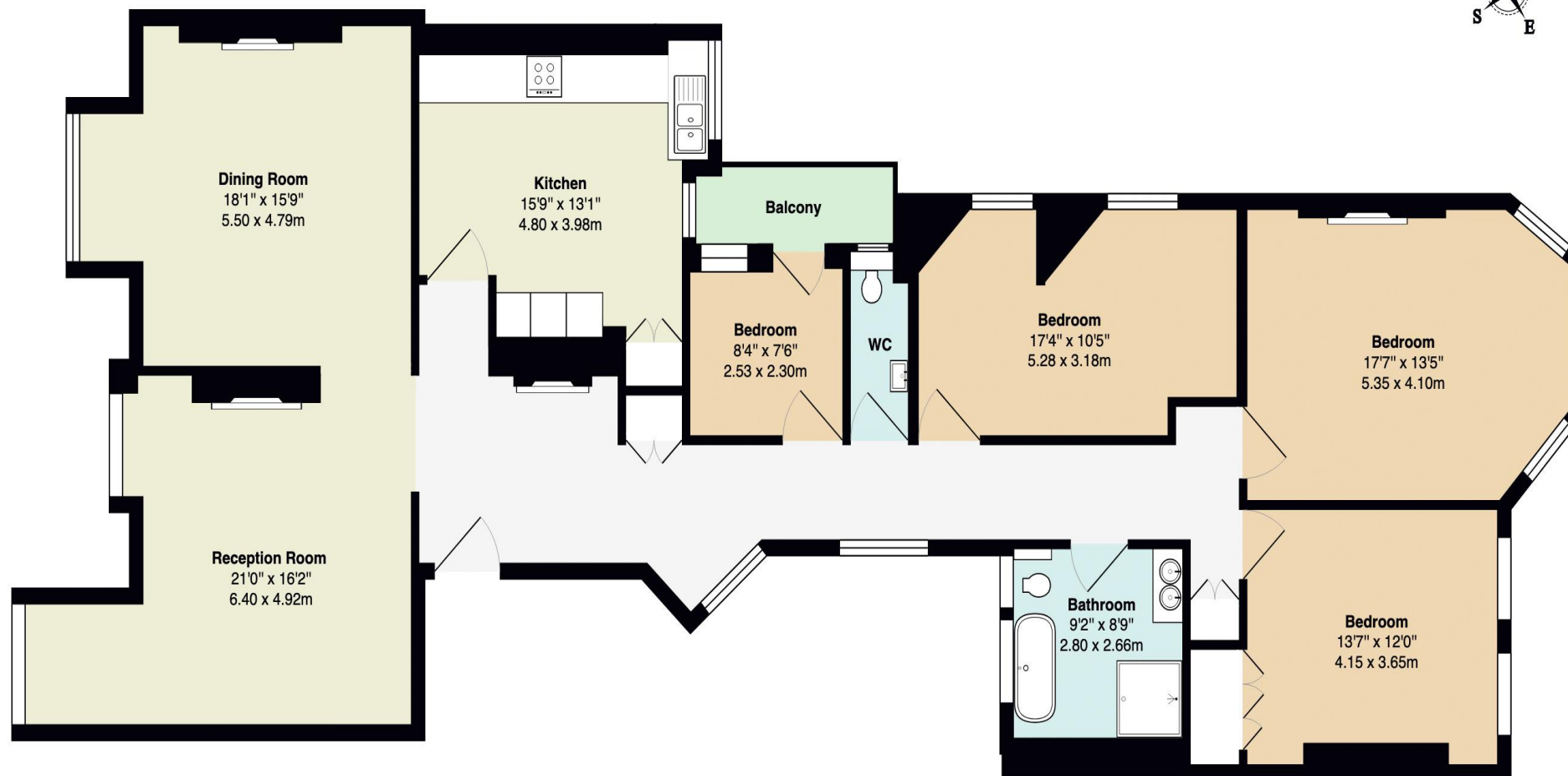


SCAN FOR MORE
GOOGLE REVIEWS

Google
★★★★★
4.9 Stars | 132 Reviews

Find us on social media

- vitaproperties
- VitaProperties
- VitaProperties



4th Floor

Arkwright Mansions NW3

Gross Internal Area: 1880 ft² ... 174.7 m² (excluding balcony)

Floor plans are for identification and guideline purposes only, not to scale
Compliant RICS code of measuring practice