



Welbeck Mansions, Inglewood Road, West Hampstead, London NW6 .| £575,000

- Beautiful Mansion Block
- Two Double Bedrooms
- Two Bathrooms
- Modern Kitchen with Integrated Appliances

- Hardwood Floors
- High Ceilings Throughout
- Superb Location

"Vita Properties have been tremendously helpful throughout the process of securing/renting my flat. Informative about the property, prompt communication, easy to use dashboard for sharing of information, and pleasant to work with. Highly recommend!"

We are delighted to offer as sole agents this bright and beautifully presented, circa 650 sq ft, two double bedroom two bathroom apartment situated on the fourth floor "Panoramic Views" of this popular mansion block discreetly tucked away off West End Lane. Spacious living room, open plan modern kitchen with an array of wall & base units, utility cupboard, two large bedrooms with En-suite to principal, hardwood floors and high ceilings.


Share of Freehold





Oliver Kent


✉ [oliver.kent@vitaproperties.uk](mailto:oliver.kent@vitaproperties.uk)  
☎ +4477 7274 0351




 Flat



 x 2

 x 1

 x 2



"I was very impressed with Vita and their network of buyers. When the sale of my flat fell through (twice) they worked extremely hard to find new buyers in a difficult market - thank you!"

---



"Working with Vita properties has been a smooth experience! No complaints at all. Our letting agent, Diana has been fantastic and very helpful throughout the whole process. I would highly recommend both Vita properties and Diana."

---





"I used Vita properties to find a flat recently and it was an overall professional, personalised and positive experience. Saira went the extra mile to accommodate to our needs and quick to help us whenever possible."

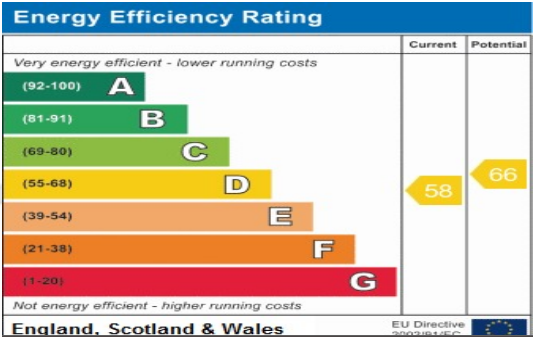
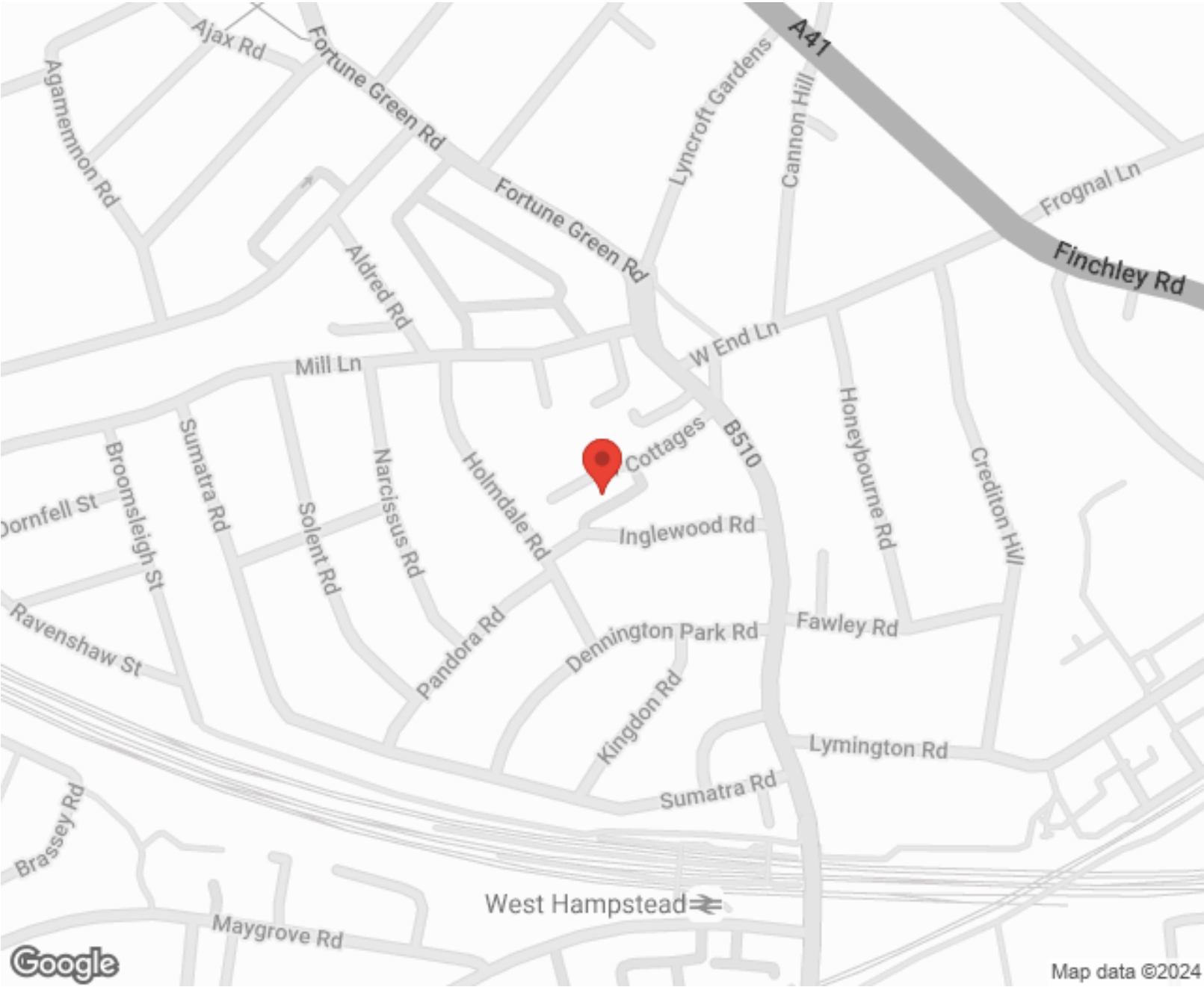
---



**MORE INFO, PICTURES,  
CONTACT ON  
OUR WEBSITE**



"Vita Properties is a very professional agency. My experience with them was incredible and the entire team was very helpful and kind throughout the renting process. I'd highly recommend!"



SCAN FOR MORE  
GOOGLE REVIEWS

Google  
★★★★★  
4.9 Stars | 132 Reviews

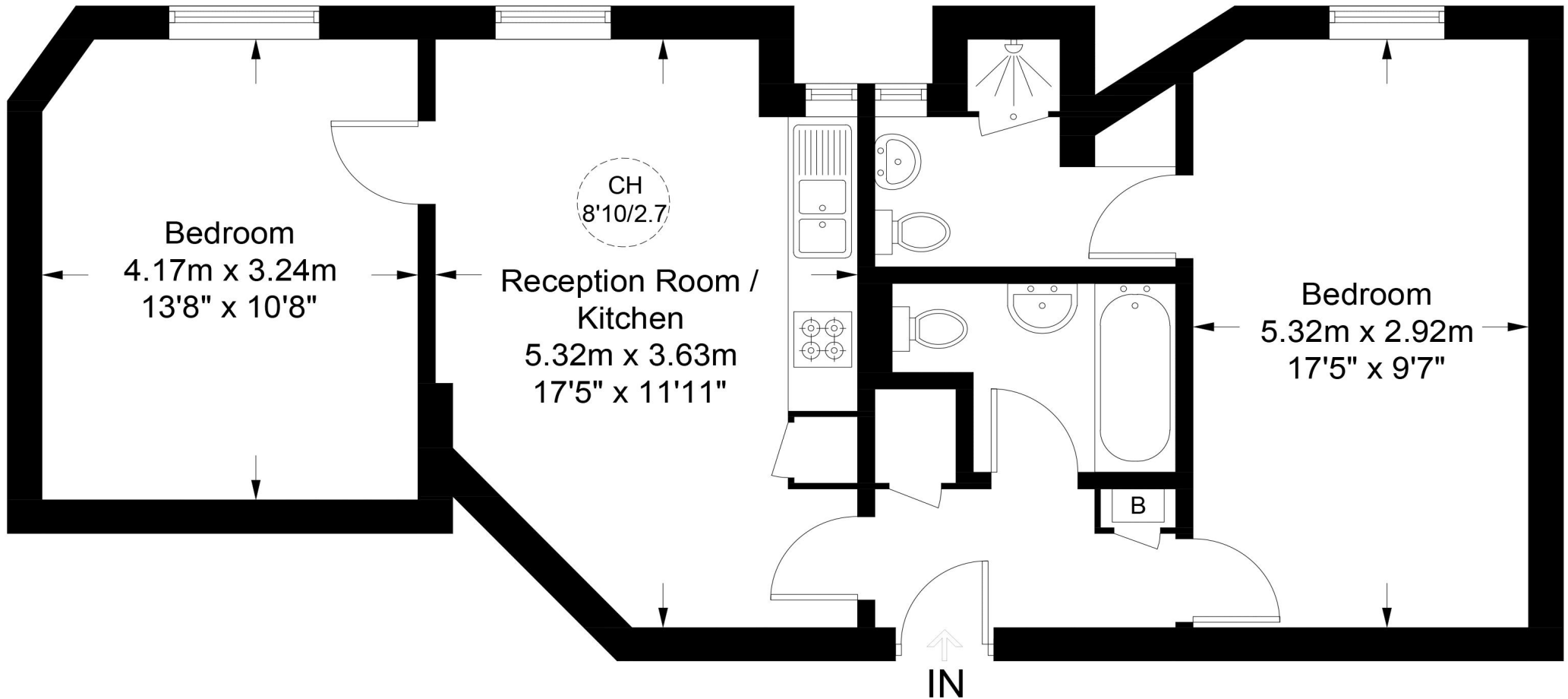
Find us on social media

- vitaproperties
- VitaProperties
- VitaProperties



# Welbeck Mansions, NW6

Approximate Gross Internal Area = 650 sq ft / 60.4 sq m



## Fourth Floor

This plan is for layout guidance only. Not drawn to scale unless stated. Windows and door openings are approximate. Whilst every care is taken in the preparation of this plan, please check all dimensions, shapes and compass bearings before making any decisions reliant upon them. (ID761609)