



## Crossfield Road, Belsize Park, London NW3 . | £800

- Modern Throughout
- Patio Garden
- Two Double Bedrooms
- Excellent Location

- Stones Throw From Amenities and Transport Links
- Available End of June

"Vita Properties have been tremendously helpful throughout the process of securing/renting my flat. Informative about the property, prompt communication, easy to use dashboard for sharing of information, and pleasant to work with. Highly recommend!"

Presenting this recently refurbished two double bedroom apartment with its own private entrance and large private patio. Benefiting from being over 850 sq ft this stunning flat is Ideally located from transport links from Swiss Cottage (Jubilee Line) and the wide variety of local shops bars and restaurants.



Available 30th June 2024 on an unfurnished basis





Oliver Kent

✉ [oliver.kent@vitaproperties.uk](mailto:oliver.kent@vitaproperties.uk)  
☎ +4477 7274 0351





Flat  
Under  
Negotiation

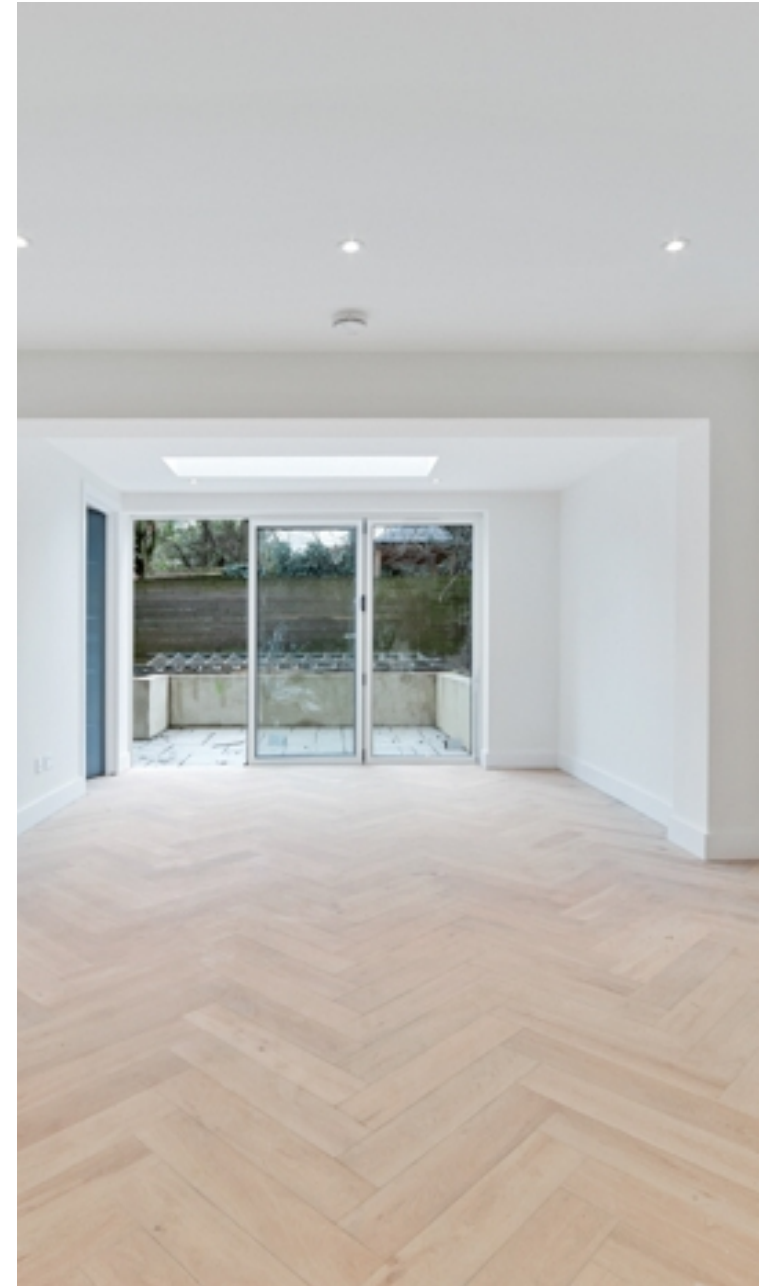


x 2  
x 1  
x 2



"I was very impressed with Vita and their network of buyers. When the sale of my flat fell through (twice) they worked extremely hard to find new buyers in a difficult market - thank you!"

---



"Working with Vita properties has been a smooth experience! No complaints at all. Our letting agent, Diana has been fantastic and very helpful throughout the whole process. I would highly recommend both Vita properties and Diana."

---



"I used Vita properties to find a flat recently and it was an overall professional, personalised and positive experience. Saira went the extra mile to accommodate to our needs and quick to help us whenever possible."

---

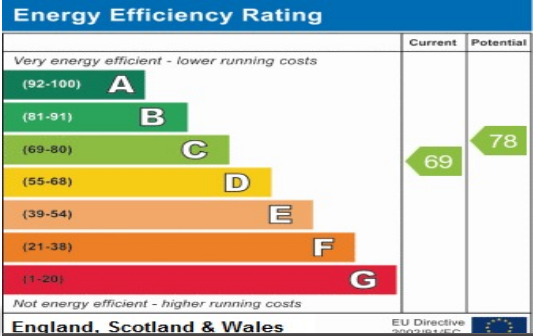
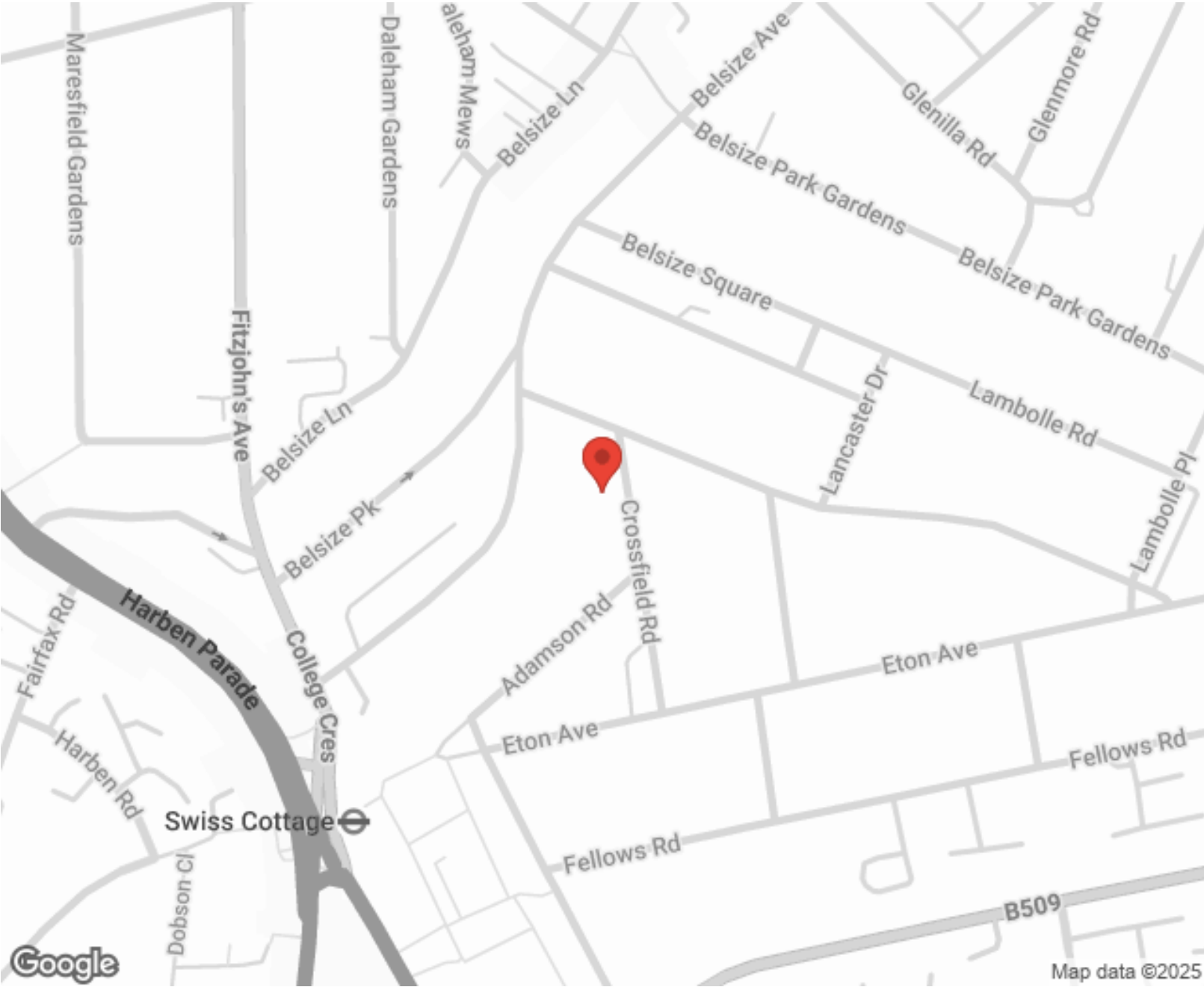


MORE INFO, PICTURES,  
CONTACT ON  
OUR WEBSITE





"Vita Properties is a very professional agency. My experience with them was incredible and the entire team was very helpful and kind throughout the renting process. I'd highly recommend!"



SCAN FOR MORE  
GOOGLE REVIEWS

Google  
★★★★★  
4.9 Stars | 132 Reviews

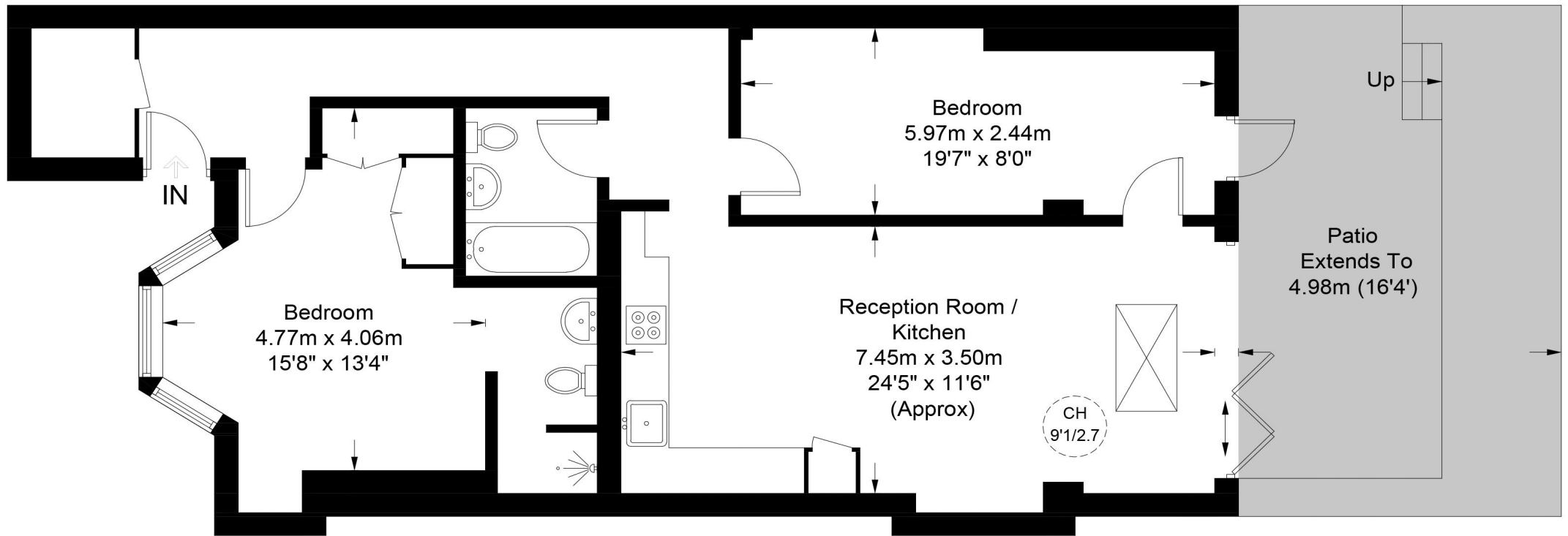
Find us on social media

- vitaproperties
- VitaProperties
- VitaProperties



# Crossfield Road, NW3

Approximate Gross Internal Area = 867 sq ft / 80.6 sq m



## Lower Ground Floor

This plan is for layout guidance only. Not drawn to scale unless stated. Windows and door openings are approximate. Whilst every care is taken in the preparation of this plan, please check all dimensions, shapes and compass bearings before making any decisions reliant upon them. (ID732636)