



Avenue Mansions, Finchley Road, Hampstead, London NW3 .| £635

- Brand New
- Lift
- 2nd Floor
- Large Living Room

- Porter
- Sep WC

"Vita Properties have been tremendously helpful throughout the process of securing/renting my flat. Informative about the property, prompt communication, easy to use dashboard for sharing of information, and pleasant to work with. Highly recommend!"

Vita Properties are proud to offer this exceptional NEWLY REFURBISHED bright and spacious 3 Double Bedroom Apartment situated on the 2nd Floor within the ever popular BAM Estate. The property comprises a spacious lounge, a fully fitted eat in kitchen, modern bathrooms with inset shower, excellent storage, high ceilings, original features retained and a separate WC. Avenue Mansions boasts highly secluded communal gardens fully laid to lawn with a first class portorage service. The development is a short walk to West Hampstead Village offering a selection of local shops, restaurants and public transportation that includes West Hampstead Tube Station (Jubilee Line) and West Hampstead (Thames Link). Avenue Mansions is also within close distance to the popular Hampstead Village and Hampstead Heath.

Viewings are highly recommended



Oliver Kent

✉ [oliver.kent@vitaproperties.uk](mailto:oliver.kent@vitaproperties.uk)  
☎ +4477 7274 0351



🏠 Flat  
🔑 Available  
to Let  
🛏 x 3  
🛋 x 1  
🚿 x 2

SCAN FOR  
A VIDEO  
WALKTHROUGH



"I was very impressed with Vita and their network of buyers. When the sale of my flat fell through (twice) they worked extremely hard to find new buyers in a difficult market - thank you!"

---



"Working with Vita properties has been a smooth experience! No complaints at all. Our letting agent, Diana has been fantastic and very helpful throughout the whole process. I would highly recommend both Vita properties and Diana."

---





"I used Vita properties to find a flat recently and it was an overall professional, personalised and positive experience. Saira went the extra mile to accommodate to our needs and quick to help us whenever possible."

---

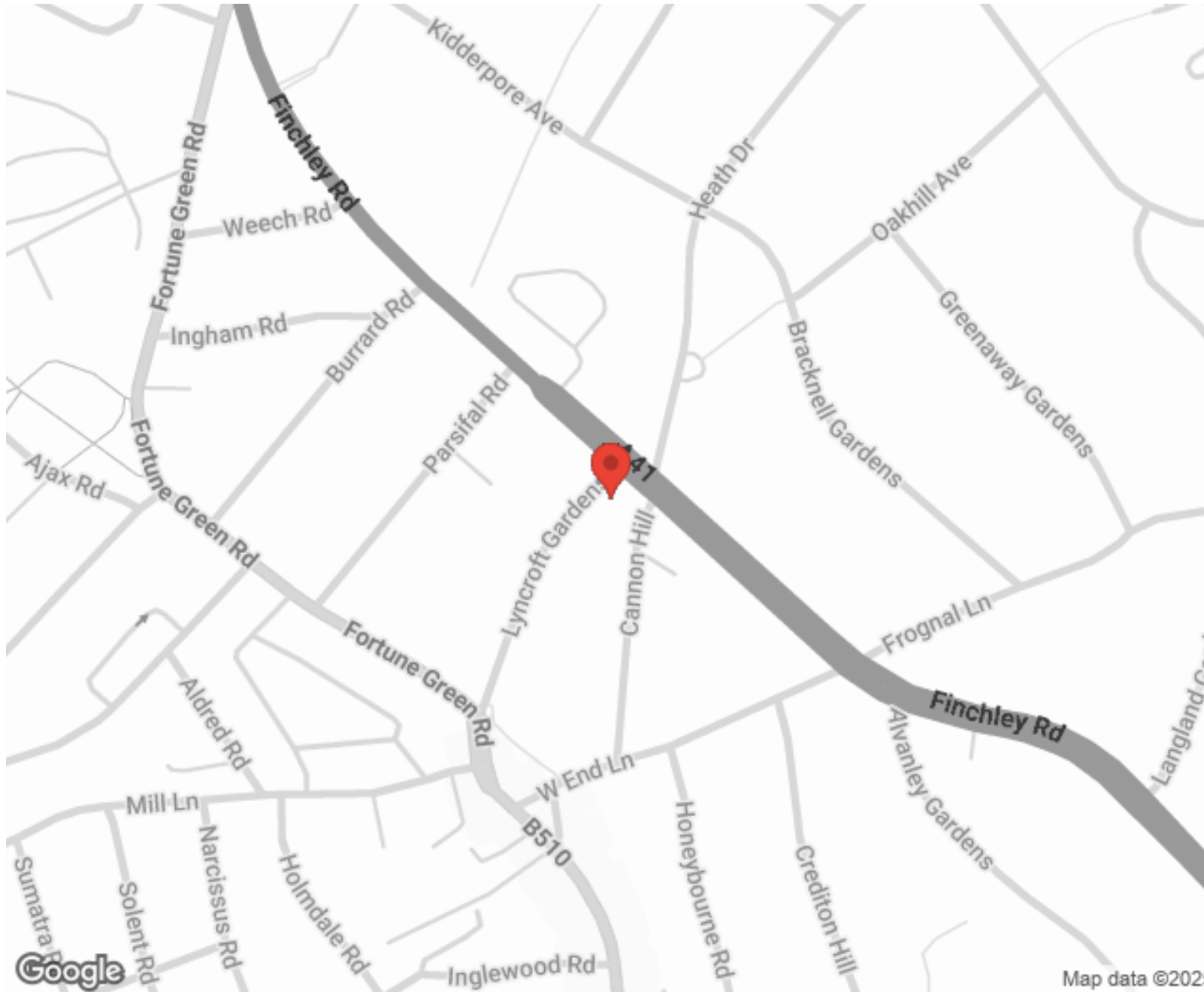


**MORE INFO, PICTURES,  
CONTACT ON  
OUR WEBSITE**



"Vita Properties is a very professional agency. My experience with them was incredible and the entire team was very helpful and kind throughout the renting process. I'd highly recommend!"

---



SCAN FOR MORE  
GOOGLE REVIEWS



Google



4.9 Stars | 132 Reviews

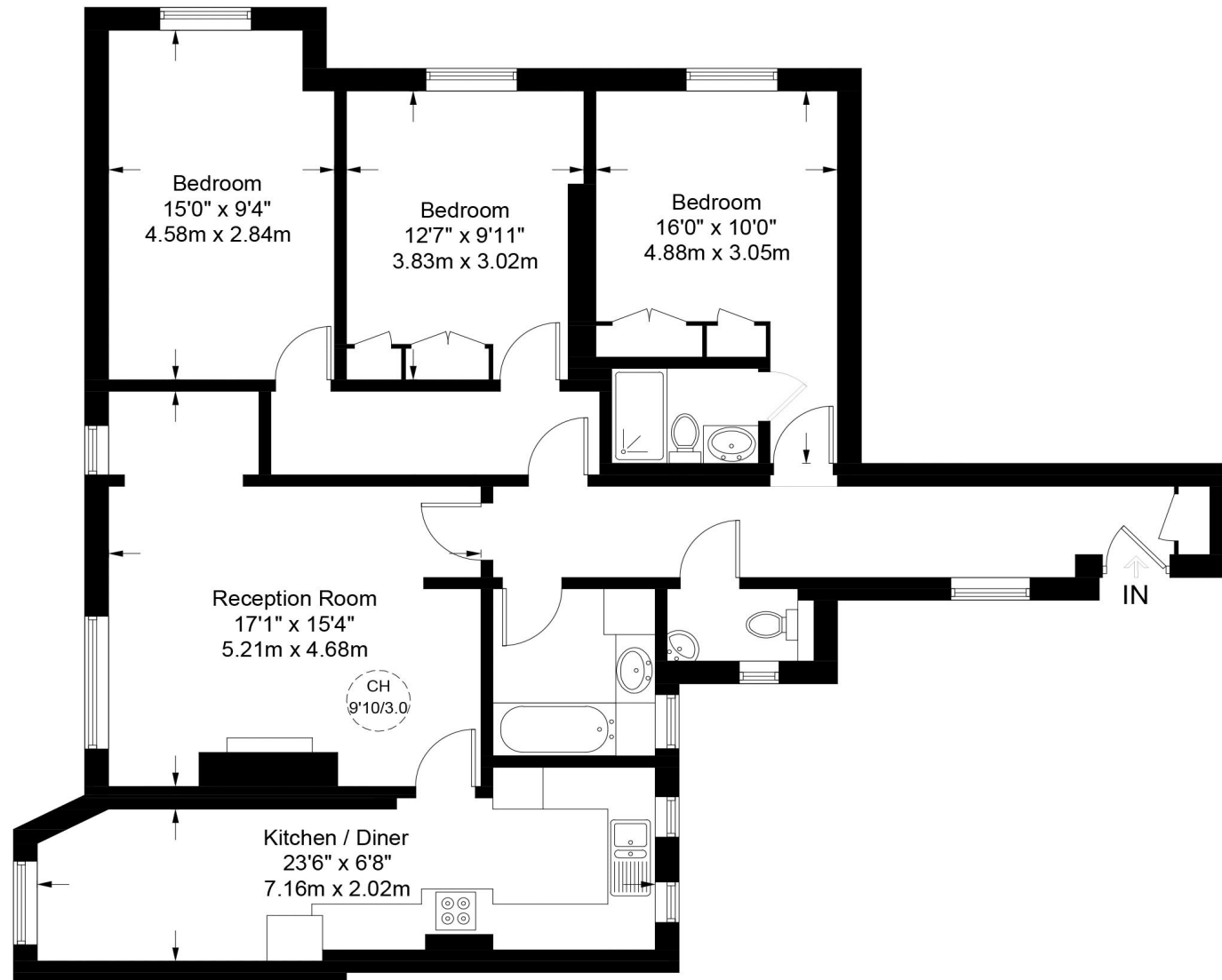
Find us on social media





# Avenue Mansions, NW3

Approximate Gross Internal Area = 1120 sq ft / 104.1 sq m



## Second Floor

This plan is for layout guidance only. Not drawn to scale unless stated. Windows and door openings are approximate. Whilst every care is taken in the preparation of this plan, please check all dimensions, shapes and compass bearings before making any decisions reliant upon them. (ID728122)