



Westbere Road, London NW2 .| £692

- Recently Refurbished
- Wooden flooring throughout
- Within moments of the Crickwood first Connect
- Within 15 mins to Kilburn tube

"Vita Properties have been tremendously helpful throughout the process of securing/renting my flat. Informative about the property, prompt communication, easy to use dashboard for sharing of information, and pleasant to work with. Highly recommend!"

This impressive three bedroomed garden flat is beautifully presented throughout and offers extremely bright and spacious accommodation set over the entire ground floor including a wonderful decked garden and stunning kitchen/dining room. This fantastic property has been recently renovated and comprises of a wonderful entrance hall, reception room with wood flooring, contemporary semi open plan kitchen/dining room, utility room, bay-fronted master bedroom with en suite shower room, two additional bedrooms and a family bathroom and a south facing fully functional summer house . The property is conveniently located close to many local amenities. Local transport links include West Hampstead and Kilburn Underground Station (Jubilee Line) and Cricklewood Station (National Rail). Available 14th December 2020 unfurnished or part furnished.

🏠 Flat
🔑 Available
to Let
🛏 x 3
🚿 x 1
🚶 x 2



Oliver Kent

✉ oliver.kent@vitaproperties.uk
☎ +4477 7274 0351



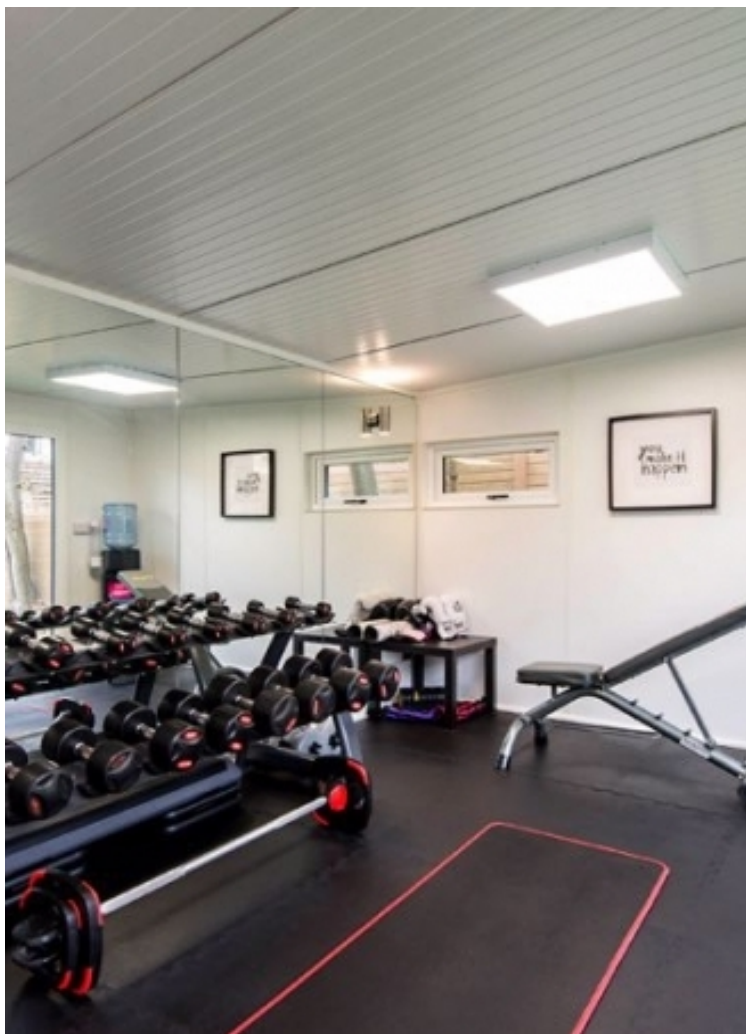
"I was very impressed with Vita and their network of buyers. When the sale of my flat fell through (twice) they worked extremely hard to find new buyers in a difficult market - thank you!"



"Working with Vita properties has been a smooth experience! No complaints at all. Our letting agent, Diana has been fantastic and very helpful throughout the whole process. I would highly recommend both Vita properties and Diana."



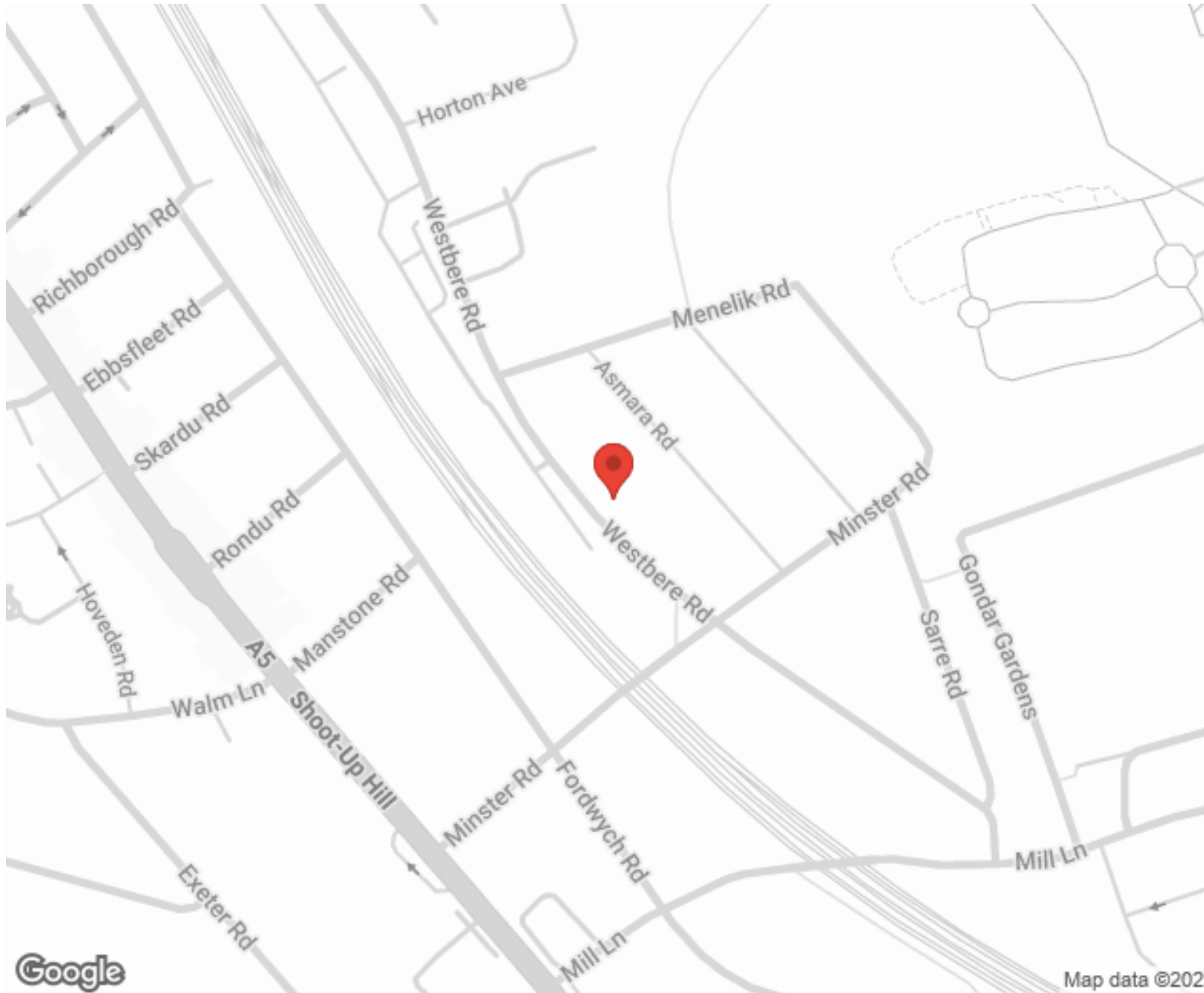
"I used Vita properties to find a flat recently and it was an overall professional, personalised and positive experience. Saira went the extra mile to accommodate to our needs and quick to help us whenever possible."



MORE INFO, PICTURES,
CONTACT ON
OUR WEBSITE



"Vita Properties is a very professional agency. My experience with them was incredible and the entire team was very helpful and kind throughout the renting process. I'd highly recommend!"



SCAN FOR MORE
GOOGLE REVIEWS



Google




4.9 Stars | 132 Reviews

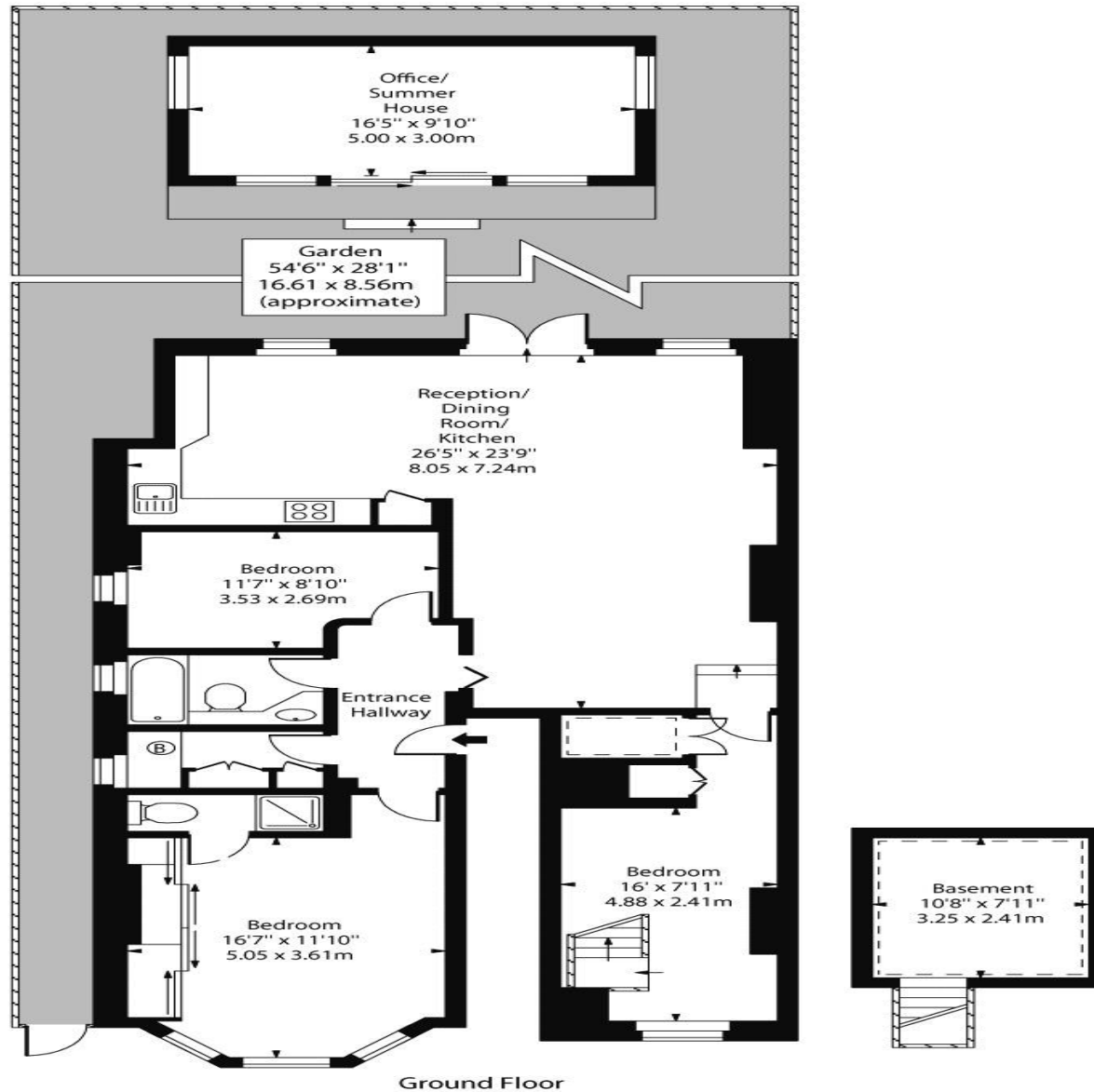
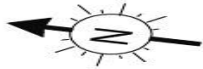
Find us on social media

 vitaproperties

 VitaProperties

 VitaProperties

Westbere Road, NW2



Ground Floor

Approx Gross Internal Area 1347 Sq Ft - 125.14 Sq M

(Including Basement, Gym & Summer House)

For Illustration Purposes Only - Not To Scale Floor Plan by www.nogaphotostudio.com Ref: No.42066

This floor plan should be used as a general outline for guidance only. Any intending purchaser or lessee should satisfy themselves by inspection, searches, enquiries and full survey as to the correctness of each statement. Any areas, measurements or distances quoted are approximate and should not be used to value a property or be the basis of any sale or let.