



## Wadham Gardens, Primrose Hill, London, NW3 | £1,200

- Wooden Floors
- Eat In Kitchen
- Fitted Wardrobes
- Moments to Avenue Road & Primrose Hill

- Spacious
- [Mycounciltax.org.uk](https://mycounciltax.org.uk) - G £2214 per annum

"Vita Properties have been tremendously helpful throughout the process of securing/renting my flat. Informative about the property, prompt communication, easy to use dashboard for sharing of information, and pleasant to work with. Highly recommend!"

---

A well presented 1500 sq ft 3 bed / 3 bath cottage situated on a popular road – Wadham Gardens, located within easy walking distance of Swiss Cottage Underground Station (Jubilee line) as well as wide open spaces of Primrose Hill.

The cottage is arranged over ground level and benefits from wood floors throughout and comprises a double reception room with feature fireplace, dining room, fully fitted eat-in kitchen with door to patio garden, 3 double bedrooms and 3 bathrooms (2 en suite).

\*\*Available immediately and offered unfurnished



Oliver Kent

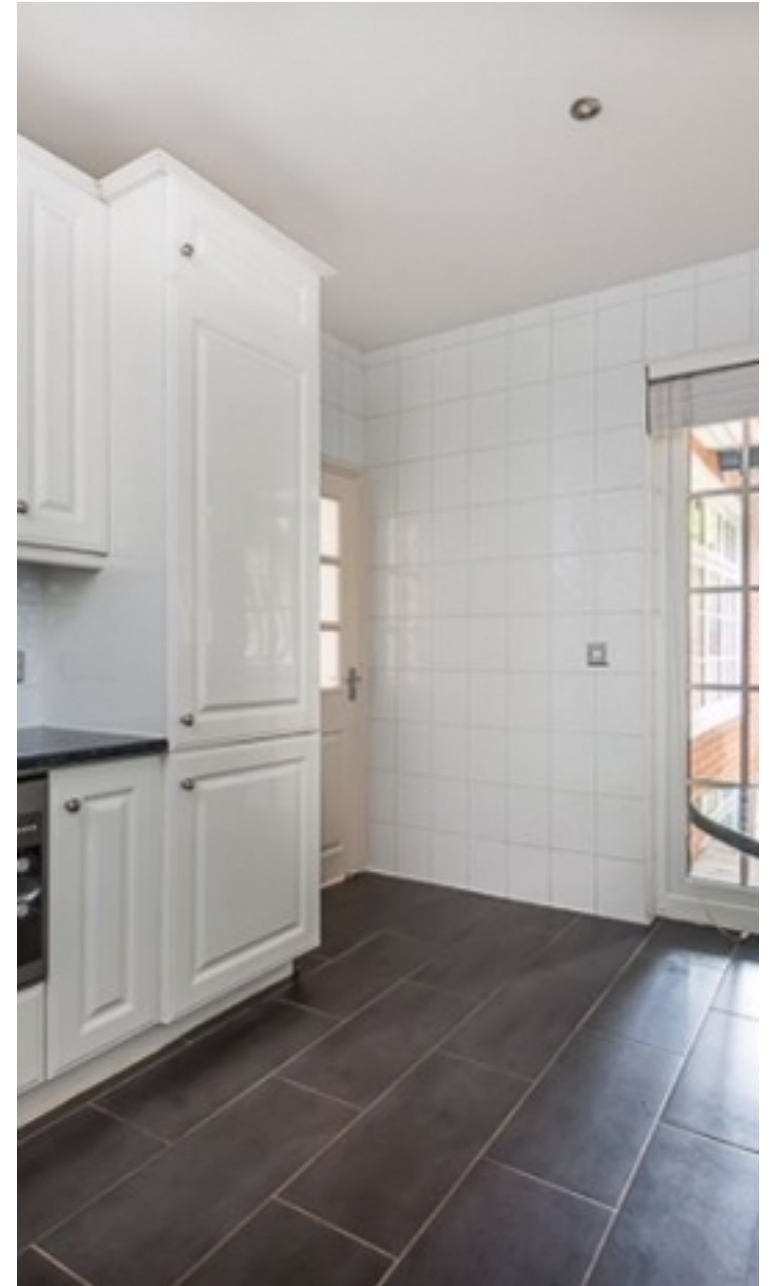
✉ [oliver.kent@vitaproperties.uk](mailto:oliver.kent@vitaproperties.uk)

☎ +4477 7274 0351



"I was very impressed with Vita and their network of buyers. When the sale of my flat fell through (twice) they worked extremely hard to find new buyers in a difficult market - thank you!"

---



"Working with Vita properties has been a smooth experience! No complaints at all. Our letting agent, Diana has been fantastic and very helpful throughout the whole process. I would highly recommend both Vita properties and Diana."

---





"I used Vita properties to find a flat recently and it was an overall professional, personalised and positive experience. Saira went the extra mile to accommodate to our needs and quick to help us whenever possible."

---

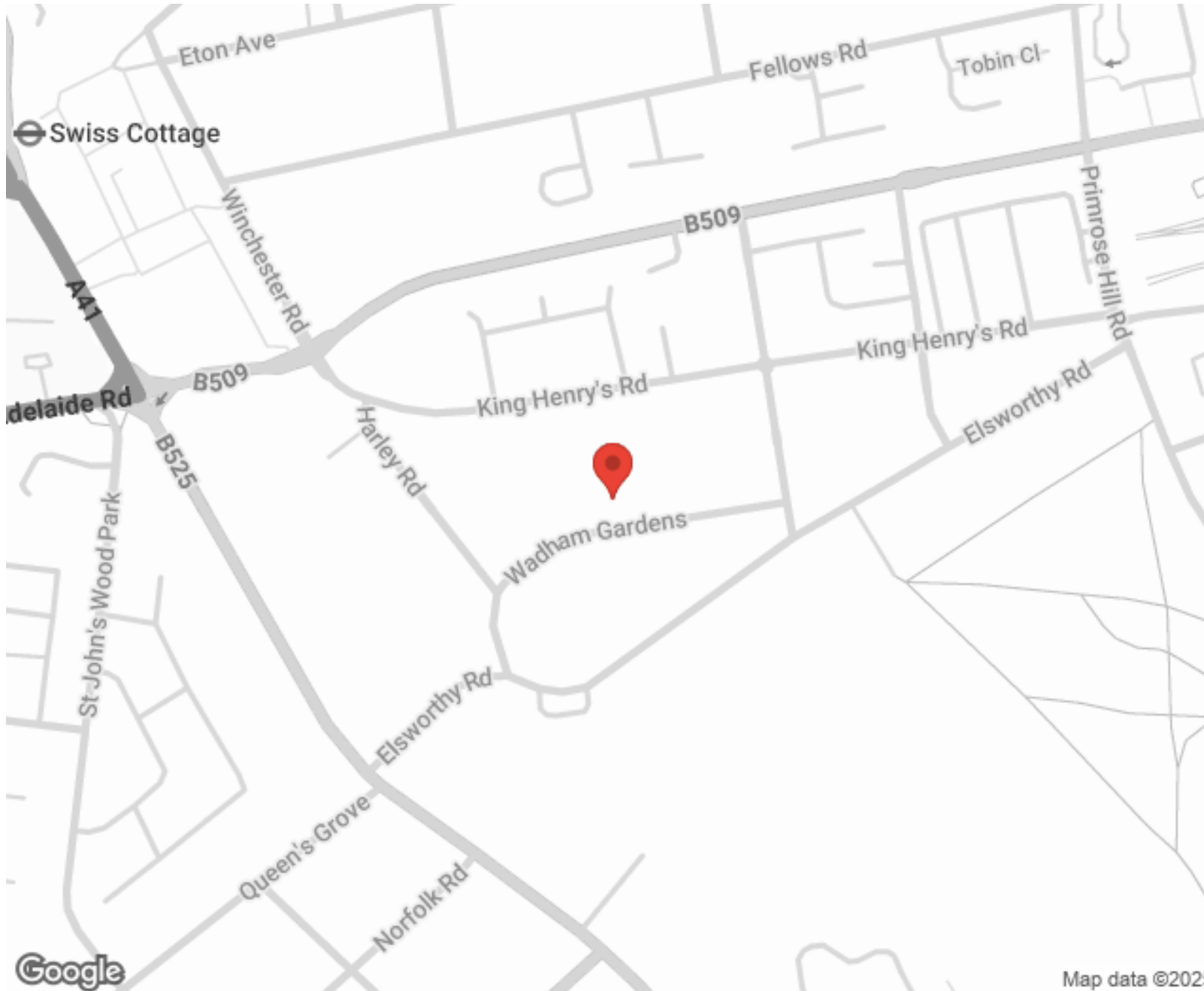


**MORE INFO, PICTURES,  
CONTACT ON  
OUR WEBSITE**



"Vita Properties is a very professional agency. My experience with them was incredible and the entire team was very helpful and kind throughout the renting process. I'd highly recommend!"

---



SCAN FOR MORE  
GOOGLE REVIEWS



Google



4.9 Stars | 132 Reviews

Find us on social media

 vitaproperties

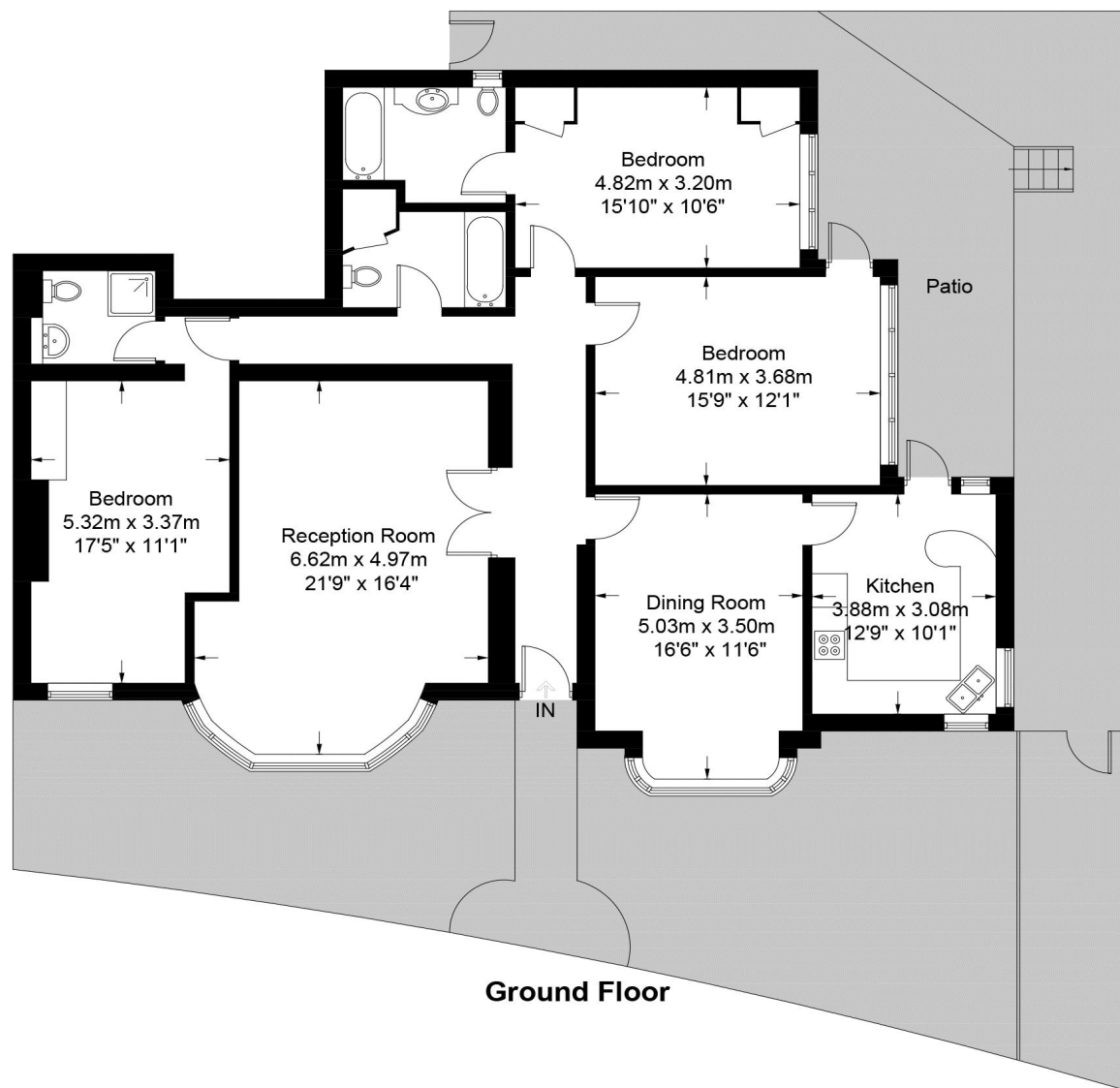
 VitaProperties

 VitaProperties



# Wadham Gardens, Primrose, Hill NW3

Approximate Gross Internal Area = 1553 sq ft / 144.3 sq m



This plan is for layout guidance only. Not drawn to scale unless stated. Windows and door openings are approximate. Whilst every care is taken in the preparation of this plan, please check all dimensions, shapes and compass bearings before making any decisions reliant upon them. (ID673780)