



Chatsworth Road, Mapesbury, London, NW2 .| £325

- Spacious one bedroom ground floor flat
- Communal gardens
- Unfurnished
- Available immediately

- Moments to Willesden Green tube






"Vita Properties have been tremendously helpful throughout the process of securing/renting my flat. Informative about the property, prompt communication, easy to use dashboard for sharing of information, and pleasant to work with. Highly recommend!"

Presenting this stunning 545 sq ft, one bedroom one bath, brand new ground floor flat. This beautiful property has recently been developed from a single period house into four great sized modern homes.

Offering an incredibly spacious bedroom with a gorgeous fully tiled bathroom, a semi open-plan living room/ kitchen, and finally a large family bathroom.

Boasting gorgeous hardwood floors throughout, stylish fully fitted kitchen with built in modern appliances, contemporary coloured brick feature bathrooms, high ceilings and spot lighting throughout.

Set on a picturesque tree-lined street and enviably located just moments from Willesden Green station (Jubilee Line) along with excellent connections for the overground.

 Flat
 Available
to Let
 x 1
 x 1
 x 1

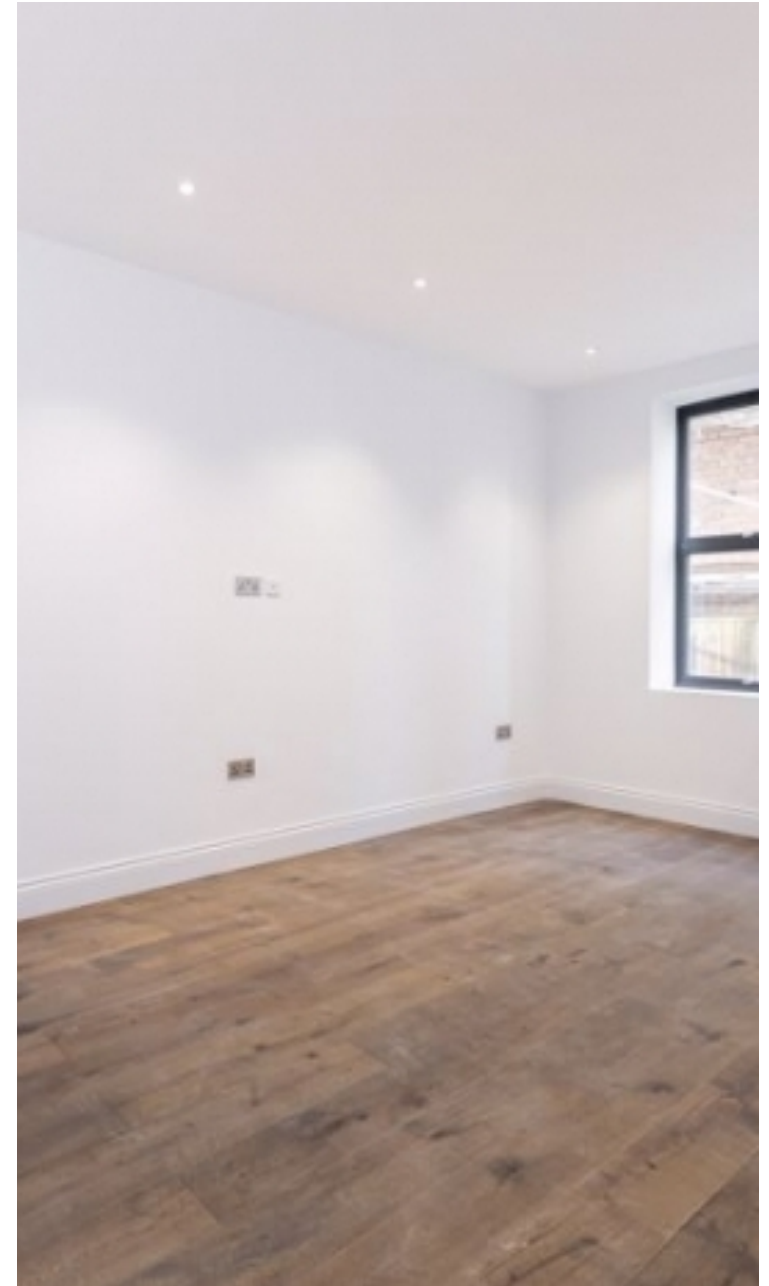


Oliver Kent

 oliver.kent@vitaproperties.uk
 +4477 7274 0351



"I was very impressed with Vita and their network of buyers. When the sale of my flat fell through (twice) they worked extremely hard to find new buyers in a difficult market - thank you!"



"Working with Vita properties has been a smooth experience! No complaints at all. Our letting agent, Diana has been fantastic and very helpful throughout the whole process. I would highly recommend both Vita properties and Diana."



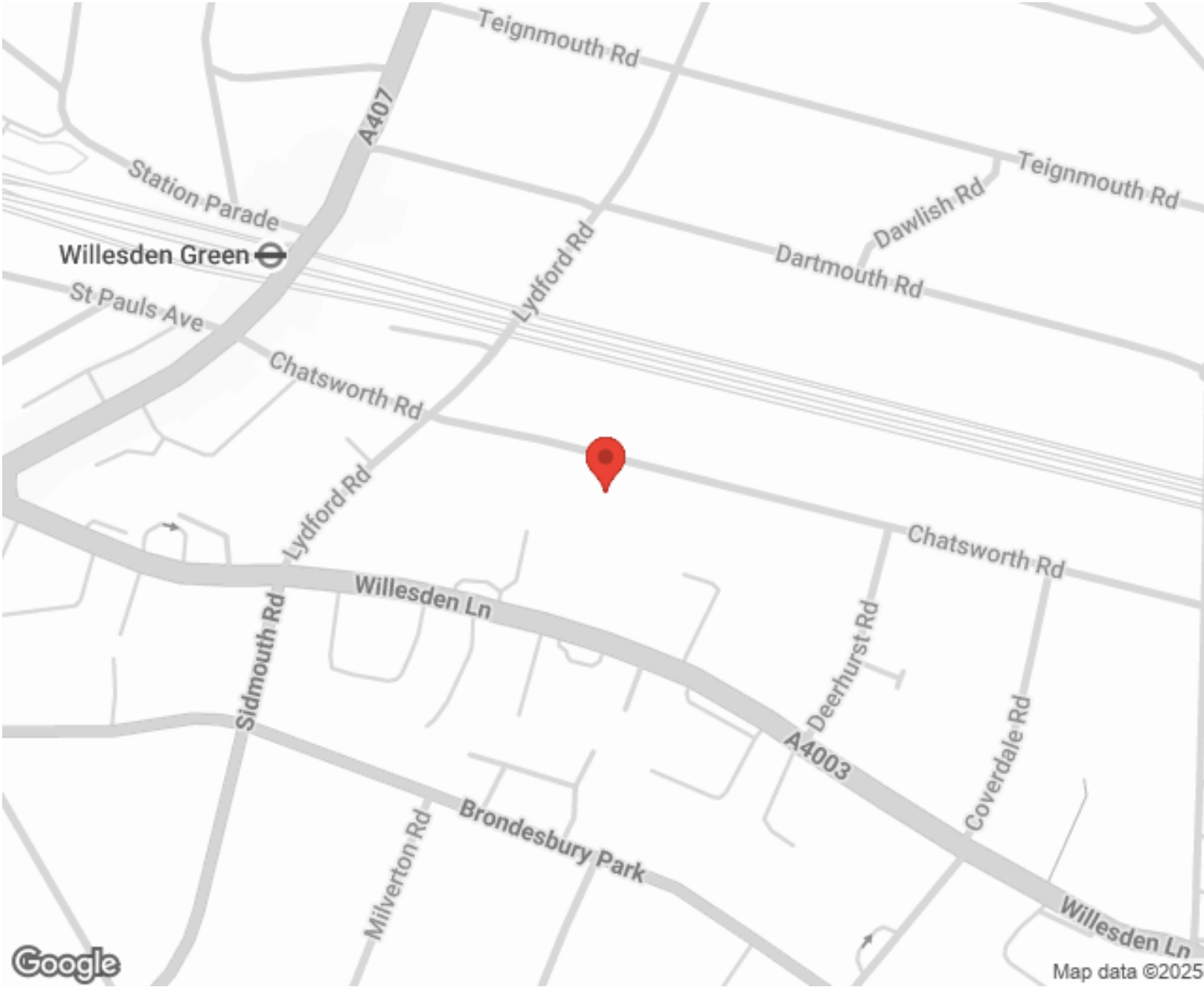
"I used Vita properties to find a flat recently and it was an overall professional, personalised and positive experience. Saira went the extra mile to accommodate to our needs and quick to help us whenever possible."



**MORE INFO, PICTURES,
CONTACT ON
OUR WEBSITE**



"Vita Properties is a very professional agency. My experience with them was incredible and the entire team was very helpful and kind throughout the renting process. I'd highly recommend!"



Energy Efficiency Rating		Environmental Impact (CO ₂) Rating	
	Potential		Potential
Very energy efficient - lower running costs		Very environmentally friendly - lower CO ₂ emissions	
(92-100) A		(92-100) A	
(81-91) B		(81-91) B	
(69-80) C	75	(69-80) C	76
(55-68) D		(55-68) D	
(39-54) E		(39-54) E	
(21-38) F		(21-38) F	
(1-20) G		(1-20) G	
Not energy efficient - higher running costs		Not environmentally friendly - higher CO ₂ emissions	
England, Scotland & Wales		England, Scotland & Wales	

SCAN FOR MORE
GOOGLE REVIEWS

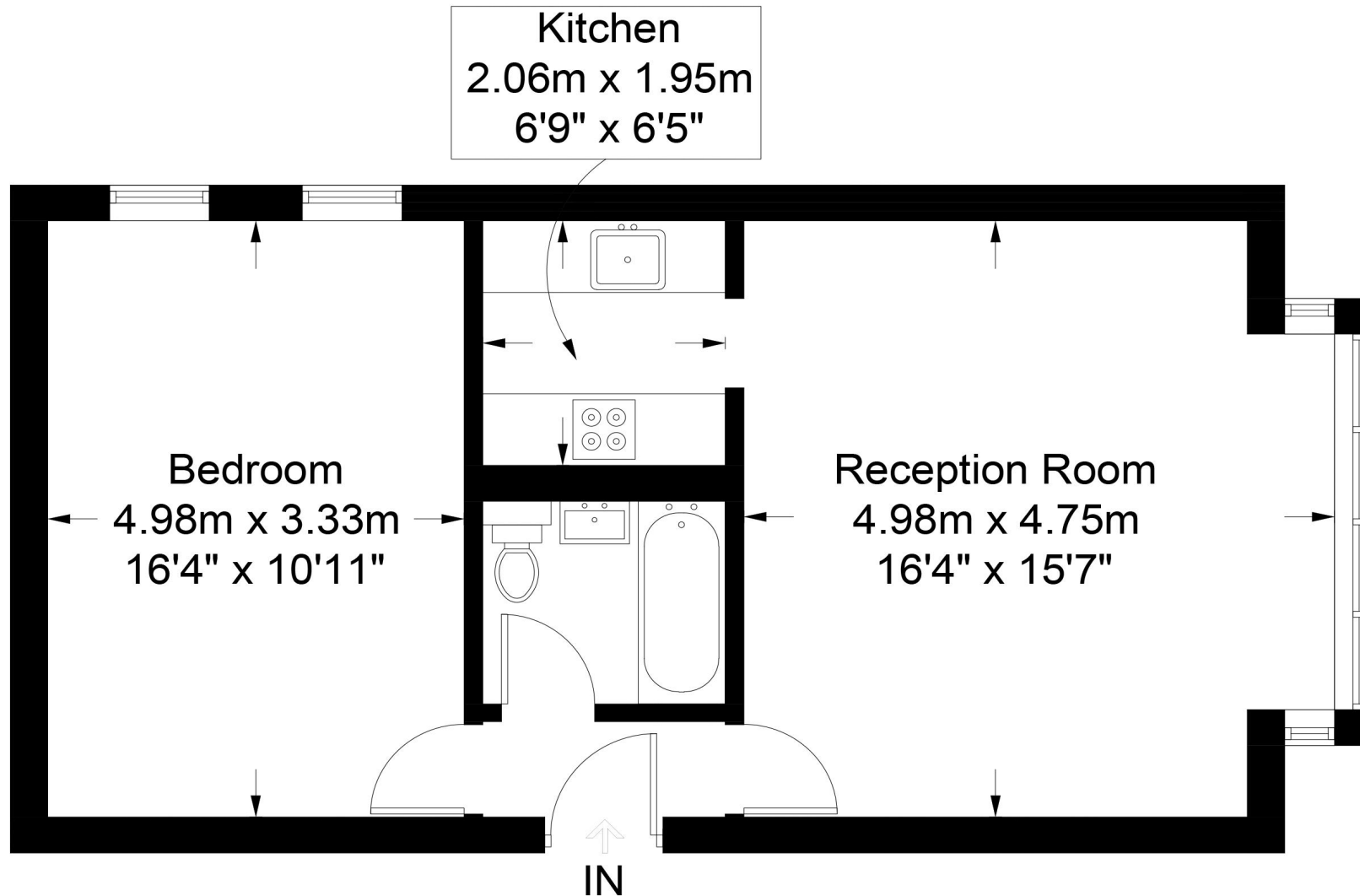
Google
★★★★★
4.9 Stars | 132 Reviews

Find us on social media

vitaproperties
 VitaProperties
 VitaProperties

Chatsworth Road, NW2

Approximate Gross Internal Area = 545 sq ft / 50.6 sq m



Ground Floor

This plan is for layout guidance only. Not drawn to scale unless stated. Windows and door openings are approximate. Whilst every care is taken in the preparation of this plan, please check all dimensions, shapes and compass bearings before making any decisions reliant upon them. (ID600714)