



West Heath Avenue, Golders Green, London, NW11 | £700,000

- Two bed, Two Bath
- Abundance of Outside Space
- 5 Minutes from Golders Green Tube
- Seconds from Golders Hill Park and Hampstead Heath

- Chain free

"Vita Properties have been tremendously helpful throughout the process of securing/renting my flat. Informative about the property, prompt communication, easy to use dashboard for sharing of information, and pleasant to work with. Highly recommend!"

We are delighted to offer as sole agents this stunning two bed apartment boasting an abundance of outside space and parking. Comprising of a fresh and modern living room, a fully fitted kitchen, stunning conservatory/ dining room which accesses onto the impressive garden which is a pleasing mixture of patio and grass, two similarly sized double bedrooms, the master offering en-suite bathroom access and the other boasting built in wardrobes as well as a separate family bathroom. Beautifully set surrounding local parks and green spaces, as well as Golders Green tube (Northern Line) being less than a five minute walk away.

🏠 Flat



🛏 x 2

🛋 x 1

🚗 x 2

SCAN FOR
A VIDEO
WALKTHROUGH



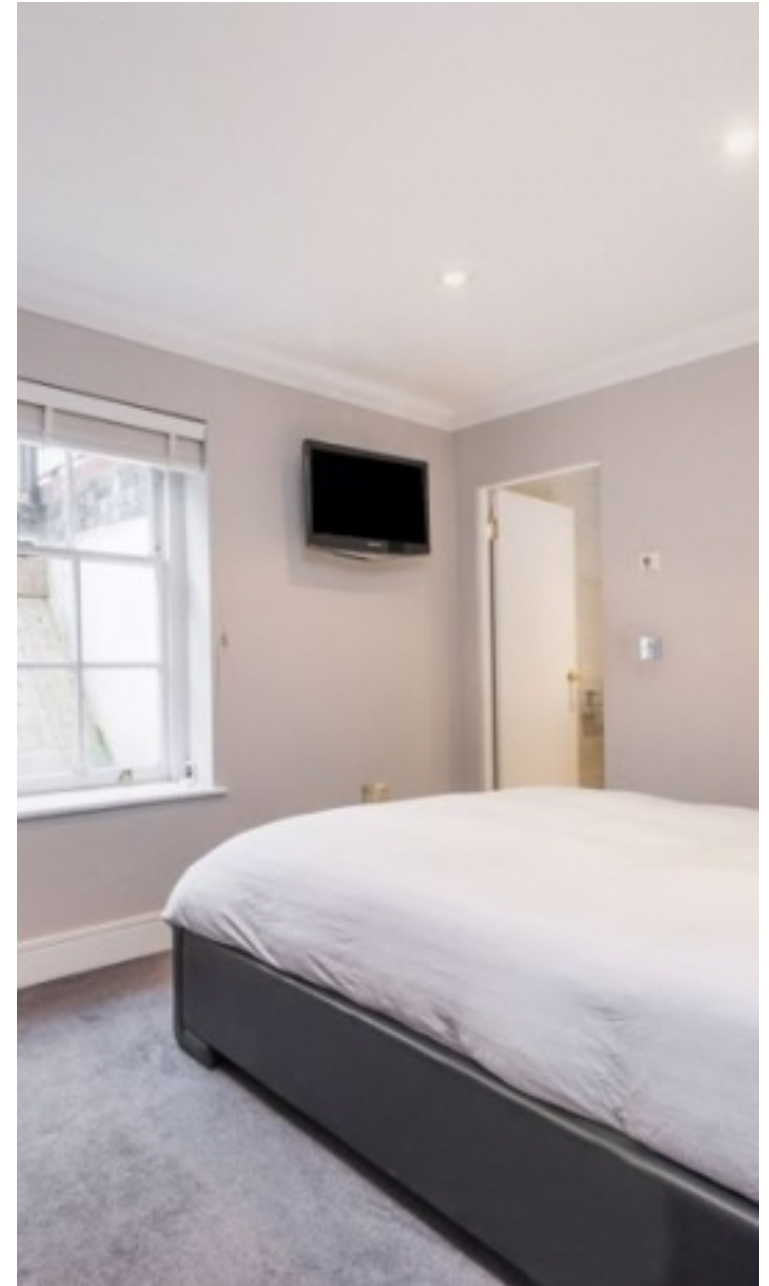
Oliver Kent

✉ oliver.kent@vitaproperties.uk

☎ +4477 7274 0351



"I was very impressed with Vita and their network of buyers. When the sale of my flat fell through (twice) they worked extremely hard to find new buyers in a difficult market - thank you!"



"Working with Vita properties has been a smooth experience! No complaints at all. Our letting agent, Diana has been fantastic and very helpful throughout the whole process. I would highly recommend both Vita properties and Diana."



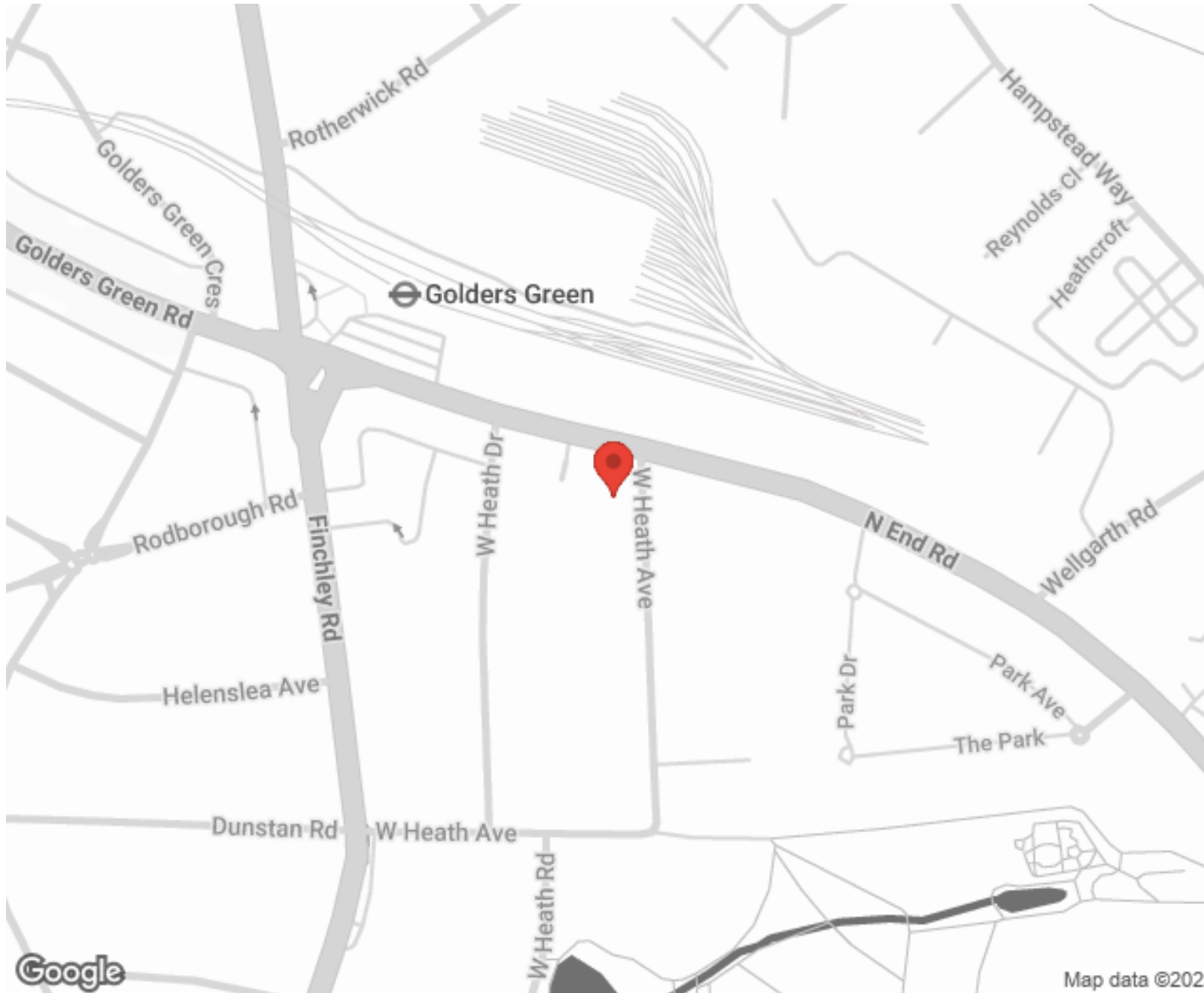
"I used Vita properties to find a flat recently and it was an overall professional, personalised and positive experience. Saira went the extra mile to accommodate to our needs and quick to help us whenever possible."



MORE INFO, PICTURES,
CONTACT ON
OUR WEBSITE



"Vita Properties is a very professional agency. My experience with them was incredible and the entire team was very helpful and kind throughout the renting process. I'd highly recommend!"



SCAN FOR MORE
GOOGLE REVIEWS




Google




4.9 Stars | 132 Reviews

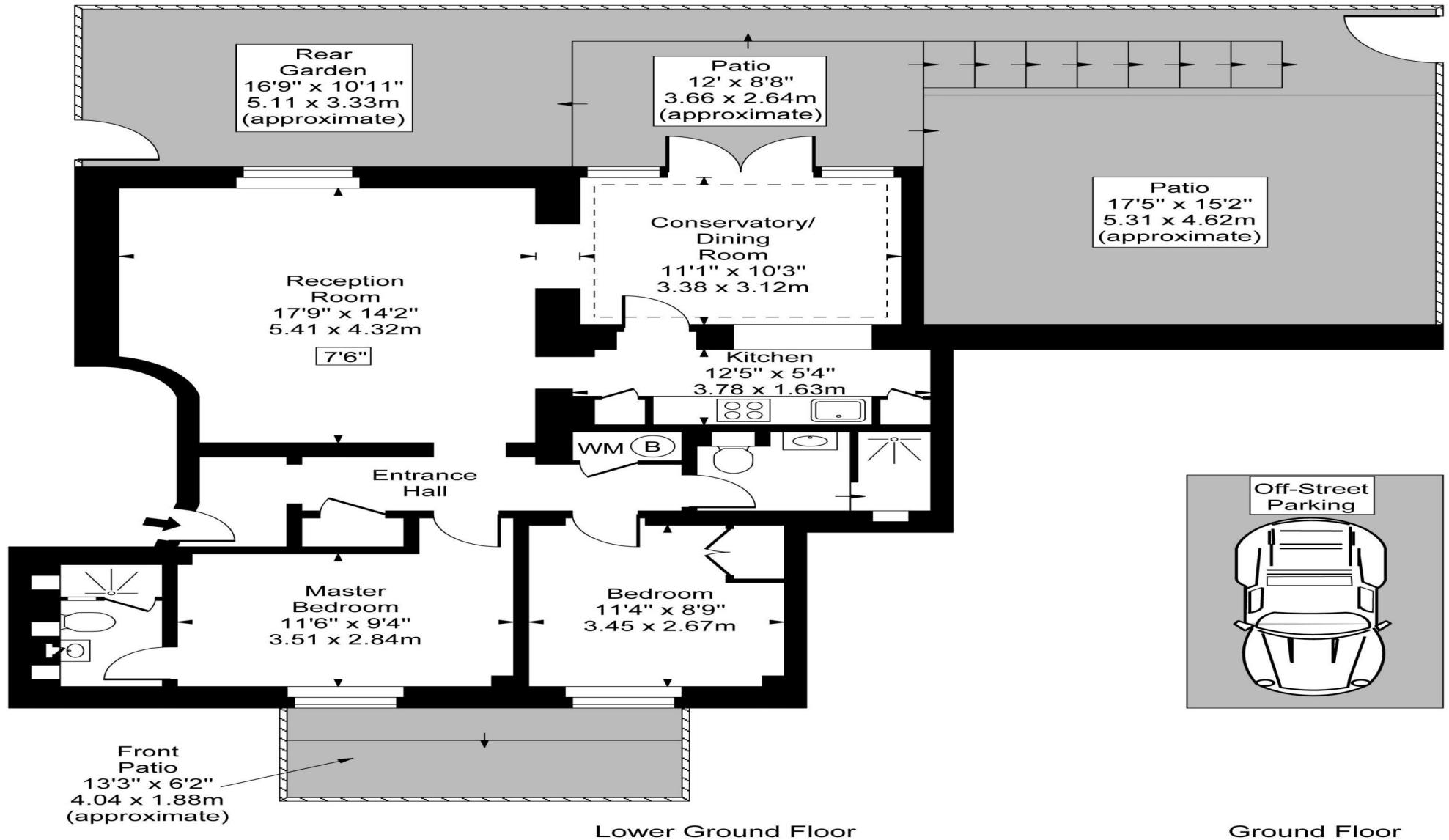
Find us on social media

 vitaproperties

 VitaProperties

 VitaProperties

Annandale House, West Heath Avenue, NW11



Approx Gross Internal Area **907 Sq Ft - 84.30 Sq M**

For Illustration Purposes Only - Not To Scale