



Cecil Grove, Primrose Hill, London NW8 .| £925

-
- Moments to St Johns wood Underground station on the Jubilee line
 - Seconds from Primrose Hill
 - Lift & Video entry
 - Balcony
 - New Build
 - Available immediately

"Vita Properties have been tremendously helpful throughout the process of securing/renting my flat. Informative about the property, prompt communication, easy to use dashboard for sharing of information, and pleasant to work with. Highly recommend!"

A beautifully presented 3 bedroom apartment on the 3rd floor of a luxury new building located in St Johns Wood and looking over Primrose Hill. The property has a good sized, bright lounge with an open plan fully fitted kitchen and access to a private balcony. There are 3 double bedrooms and 3 bathrooms. All fixtures and fitting are off the highest quality and the apartment is presented in a contemporary style. There is air conditioning and state of the art sound systems throughout. Residents have lifts and secure video entry. Superbly located for St Johns Wood High Street and Regents Park. Close to St Johns wood Underground station on the Jubilee line.

Available immediately



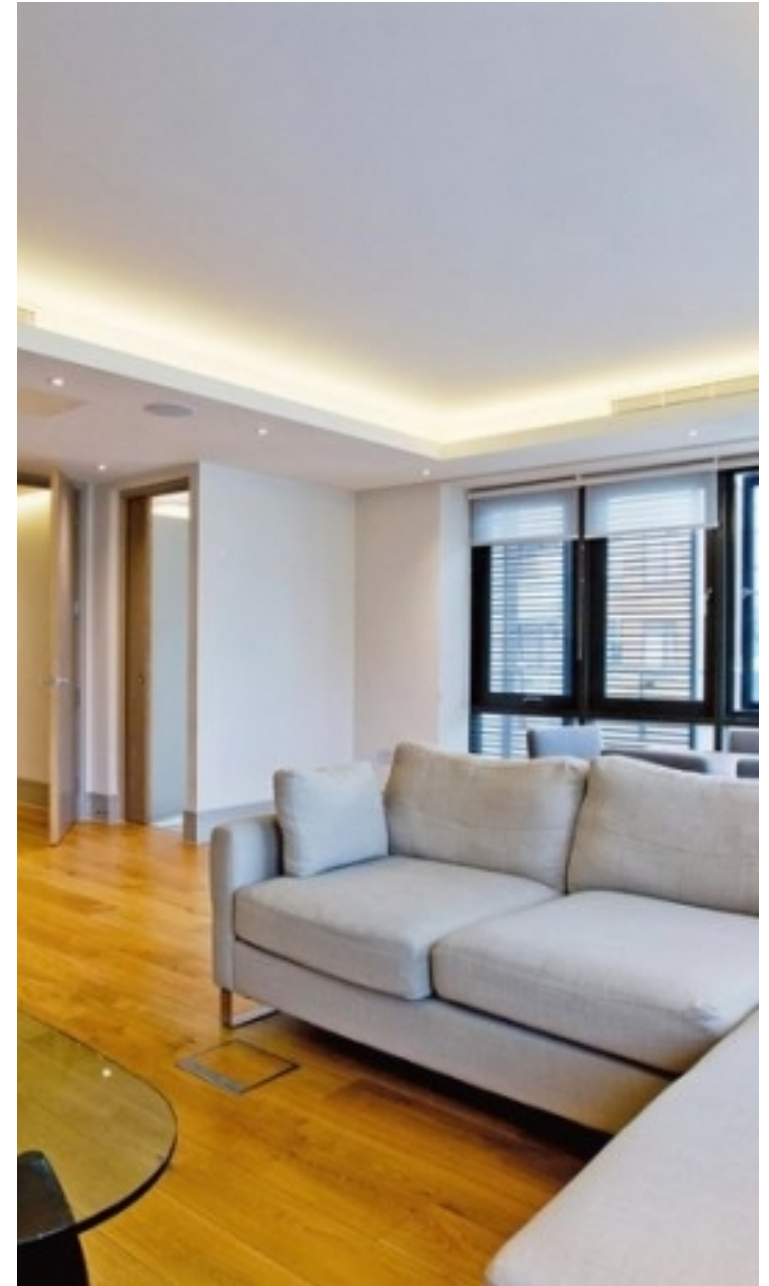
Oliver Kent

✉ oliver.kent@vitaproperties.uk
☎ +4477 7274 0351



🏠 Flat
🔑 Available
to Let
🛏 x 3
🚿 x 1
🚿 x 3

"I was very impressed with Vita and their network of buyers. When the sale of my flat fell through (twice) they worked extremely hard to find new buyers in a difficult market - thank you!"



"Working with Vita properties has been a smooth experience! No complaints at all. Our letting agent, Diana has been fantastic and very helpful throughout the whole process. I would highly recommend both Vita properties and Diana."



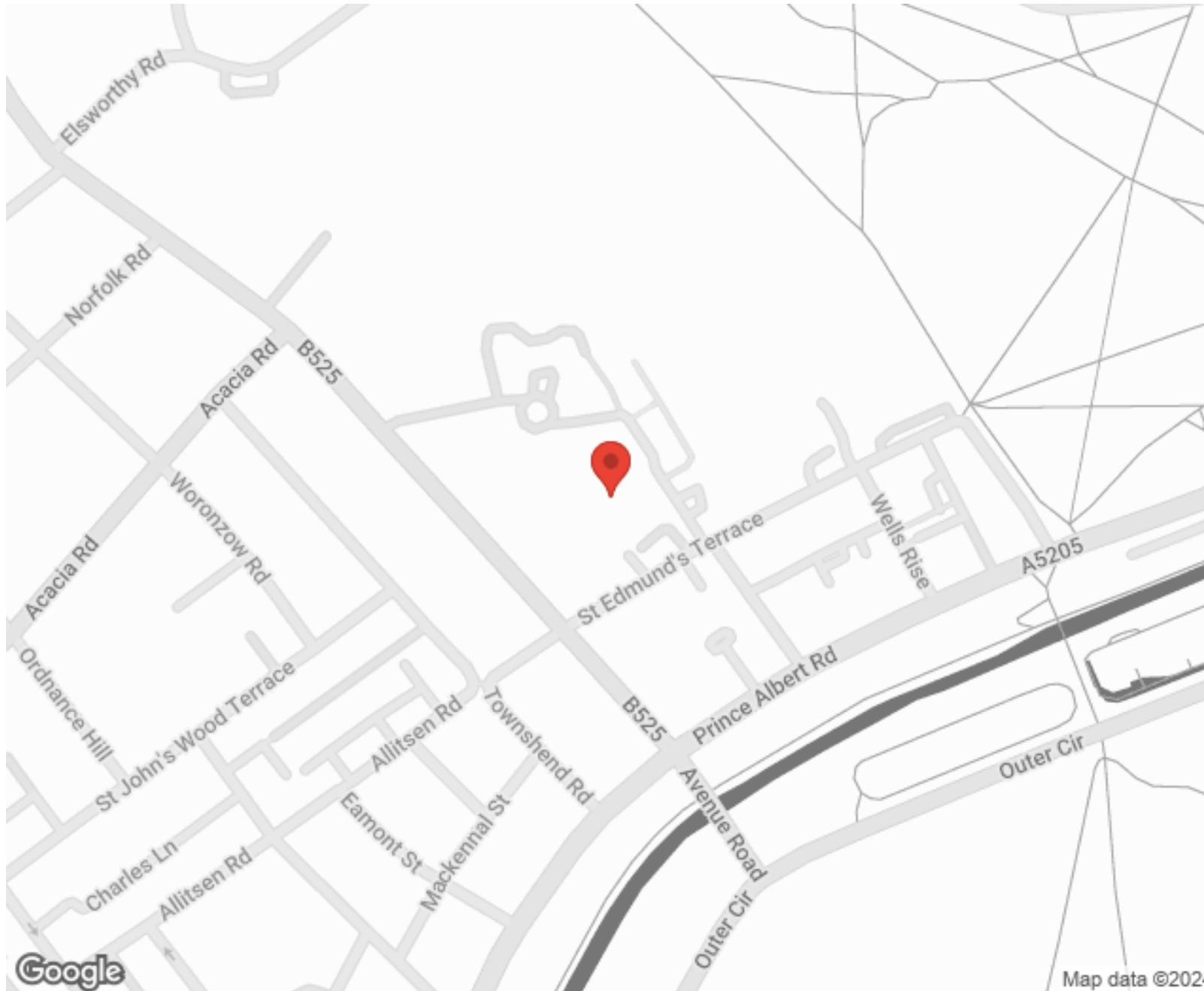
"I used Vita properties to find a flat recently and it was an overall professional, personalised and positive experience. Saira went the extra mile to accommodate to our needs and quick to help us whenever possible."



**MORE INFO, PICTURES,
CONTACT ON
OUR WEBSITE**



"Vita Properties is a very professional agency. My experience with them was incredible and the entire team was very helpful and kind throughout the renting process. I'd highly recommend!"



SCAN FOR MORE
GOOGLE REVIEWS

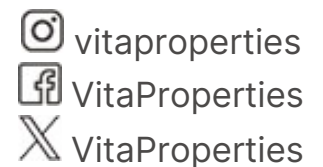


Google

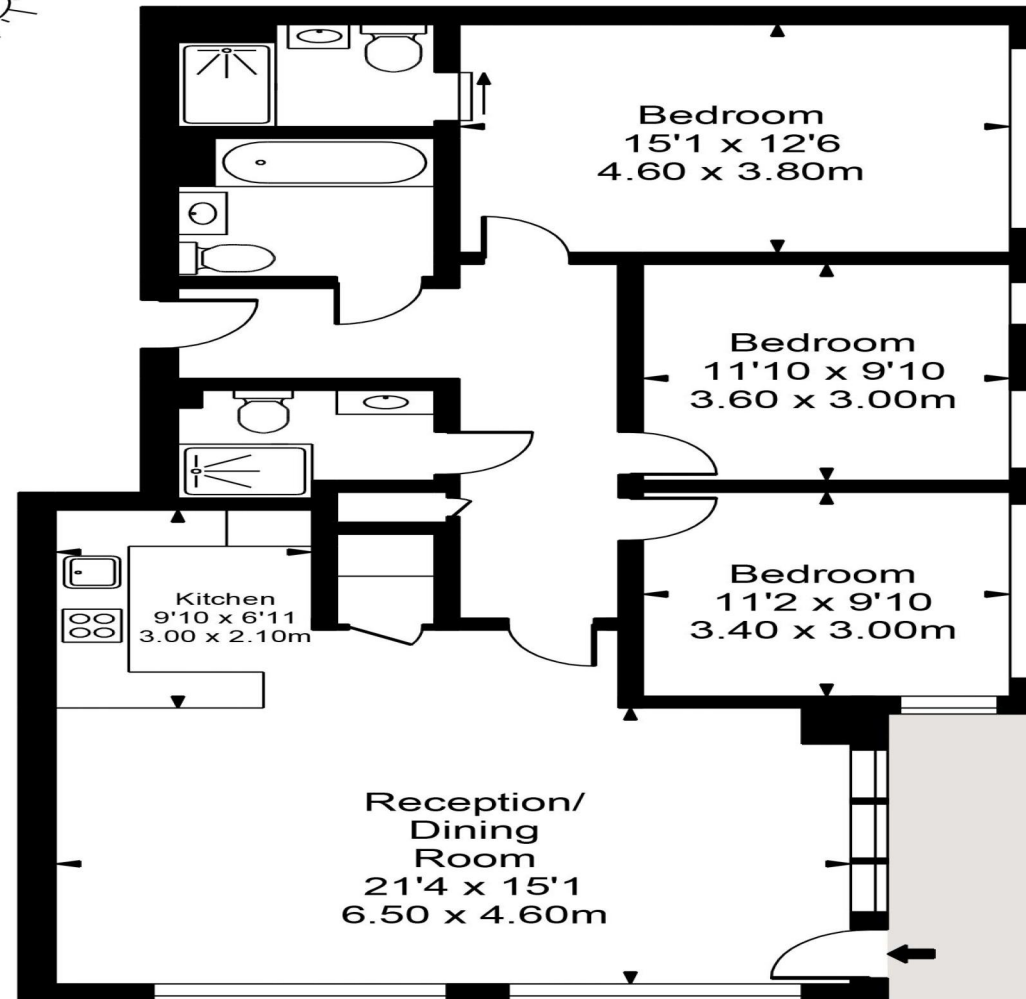
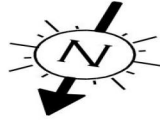


4.9 Stars | 132 Reviews

Find us on social media



Benjamin House



Approx Gross Internal Area 1189 Sq Ft - 110.46 Sq M

FOR ILLUSTRATIVE PURPOSES ONLY. NOT TO SCALE.

Whilst every attempt has been made to ensure the accuracy of the floorplan shown, all measurements, positioning, fixtures, fittings and any other data shown are an approximate interpretation for illustrative purposes only and are not to scale. No responsibility is taken for any error, omission, misstatement or use of data shown.
Floor plan by www.bestangle.co.uk