



Westfield, 15 Kidderpore Avenue, Hampstead, London, NW3 . | £995

- Beautifully modernised throughout
- Gym, Jacuzzi & Swimming Pool
- Allocated underground parking
- Communal gardens

- Watch our walk through video here
- <https://www.youtube.com/watch?v=-tFDHITSXHE>

"Vita Properties have been tremendously helpful throughout the process of securing/renting my flat. Informative about the property, prompt communication, easy to use dashboard for sharing of information, and pleasant to work with. Highly recommend!"

Available immediately is this fully refurbished and modernised, 2nd floor lateral three bedroom apartment with a balcony which is accessed from all its rooms. Set in one of Hampstead's most reputable portered developments, the property further comprises a semi-open plan kitchen opening onto a double aspect reception room, a family bathroom and an en-suite to the master bedroom. The building comes with lift access and offers residents the use of communal facilities including a gym, swimming pool and sauna. Kidderpore Avenue is located within easy reach of both Hampstead Village and the convenient amenities of Finchley Road.

Offered unfurnished



Oliver Kent

✉ [oliver.kent@vitaproperties.uk](mailto:oliver.kent@vitaproperties.uk)  
☎ +4477 7274 0351



🏠 Flat  
🔑 Under  
Negotiation  
🛋 x 3  
🛏 x 1  
🚿 x 2

SCAN FOR  
A VIDEO  
WALKTHROUGH



"I was very impressed with Vita and their network of buyers. When the sale of my flat fell through (twice) they worked extremely hard to find new buyers in a difficult market - thank you!"

---



"Working with Vita properties has been a smooth experience! No complaints at all. Our letting agent, Diana has been fantastic and very helpful throughout the whole process. I would highly recommend both Vita properties and Diana."

---





"I used Vita properties to find a flat recently and it was an overall professional, personalised and positive experience. Saira went the extra mile to accommodate to our needs and quick to help us whenever possible."

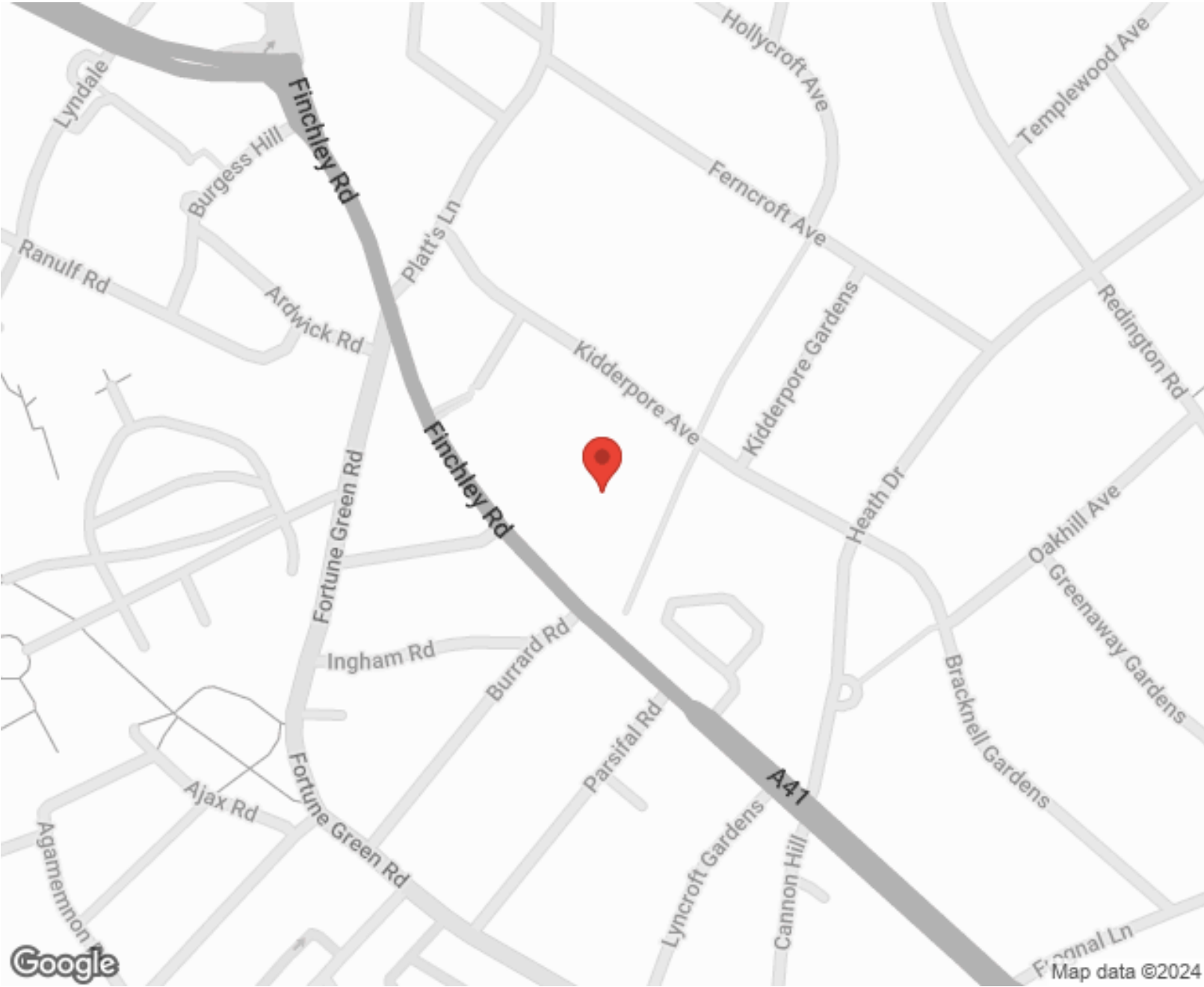
---





MORE INFO, PICTURES,  
CONTACT ON  
OUR WEBSITE



"Vita Properties is a very professional agency. My experience with them was incredible and the entire team was very helpful and kind throughout the renting process. I'd highly recommend!"



Energy Efficiency Rating		Environmental Impact (CO <sub>2</sub> ) Rating					
	Current	Potential		Current	Potential		
Very energy efficient - lower running costs				Very environmentally friendly - lower CO <sub>2</sub> emissions			
(92-100) <b>A</b>				(92-100) <b>A</b>			
(81-91) <b>B</b>				(81-91) <b>B</b>			
(69-80) <b>C</b>				(69-80) <b>C</b>			
(55-68) <b>D</b>				(55-68) <b>D</b>			
(39-54) <b>E</b>				(39-54) <b>E</b>			
(21-38) <b>F</b>				(21-38) <b>F</b>			
(1-20) <b>G</b>				(1-20) <b>G</b>			
Not energy efficient - higher running costs				Not environmentally friendly - higher CO <sub>2</sub> emissions			
England, Scotland & Wales		EU Directive		England, Scotland & Wales		EU Directive	

SCAN FOR MORE  
GOOGLE REVIEWS



Google



4.9 Stars | 132 Reviews

Find us on social media



vitaproperties



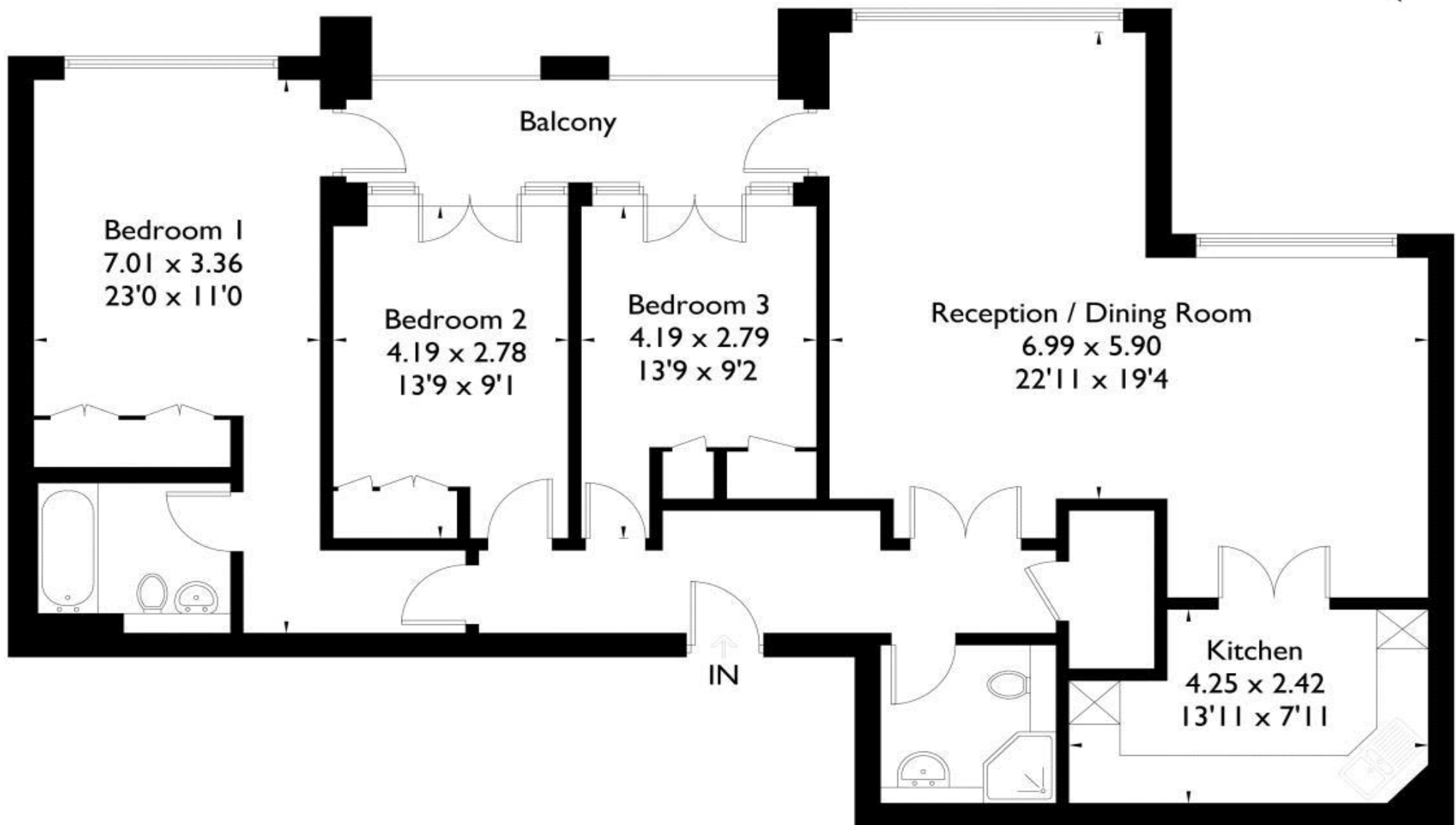
VitaProperties



VitaProperties

# Kidderpore Avenue

Approximate Gross Internal Area = 115 sq m / 1238 sq ft



FLOORPLANZ © 2015 0845 6344080 Ref: I48576

This plan is for layout guidance only. Drawn in accordance with RICS guidelines. Not drawn to scale unless stated. Windows & door openings are approximate. Whilst every care is taken in the preparation of this plan, please check all dimensions, shapes & compass bearings before making any decisions reliant upon them.