



Frognal Lane, Hampstead, London, NW3 .| £2,600

- Access to a 3 acre communal gardens
- Dedicated off street parking
- Roof terrace offering panoramic views
- Managed

- Available Now!
- Recently refurbished

"Vita Properties have been tremendously helpful throughout the process of securing/renting my flat. Informative about the property, prompt communication, easy to use dashboard for sharing of information, and pleasant to work with. Highly recommend!"

A stunning newly refurbished four)
bedroom apartment situated in the
heart of Hampstead. This property
offers lateral living space, air
conditioning in every room, built in
Sonos speakers and high ceilings
throughout. The property comprises
of: four large double bedrooms, two
en suites, an additional family
bathroom and guest WC, two
reception rooms with gas fires and
an incredible roof terrace which
overlooks the far reaching views of
London. Frognal Lane is a leafy
residential road that runs between
Frognal and Finchley Road. It offers
access to the many shops, cafes
and boutiques of Hampstead along
with the transport links and
amenities of Finchley Road and
West Hampstead. Transport links
include: Northern Line (Hampstead)
approx: 0.4 miles. Jubilee &
Metropolitan lines (Finchley Road)
approx: 0.3 miles. London
Overground Line (Finchley Road &
Frognal) approx: 0.2 miles.

🏠 Flat
🔑 Available
to Let
🛏 x 4
🛋 x 2
🚿 x 3

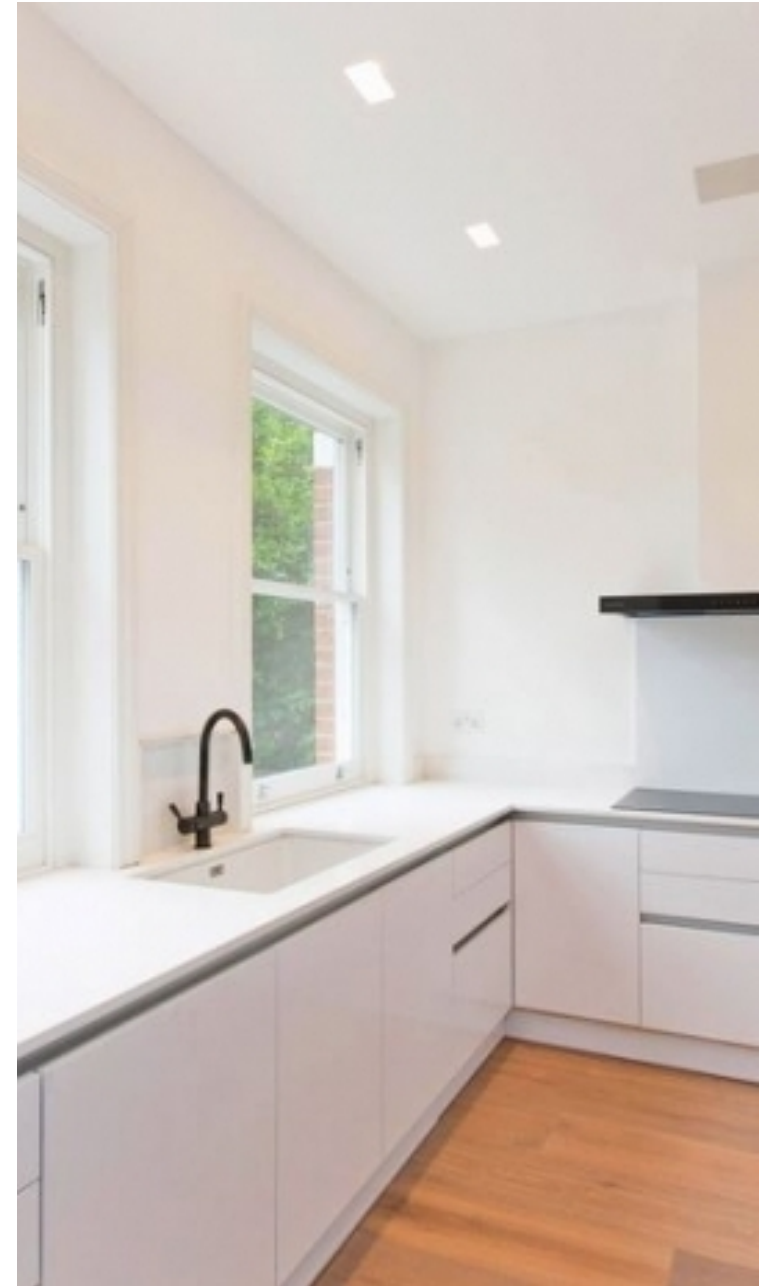


Oliver Kent

✉️ oliver.kent@vitaproperties.uk
☎️ +4477 7274 0351



"I was very impressed with Vita and their network of buyers. When the sale of my flat fell through (twice) they worked extremely hard to find new buyers in a difficult market - thank you!"



"Working with Vita properties has been a smooth experience! No complaints at all. Our letting agent, Diana has been fantastic and very helpful throughout the whole process. I would highly recommend both Vita properties and Diana."



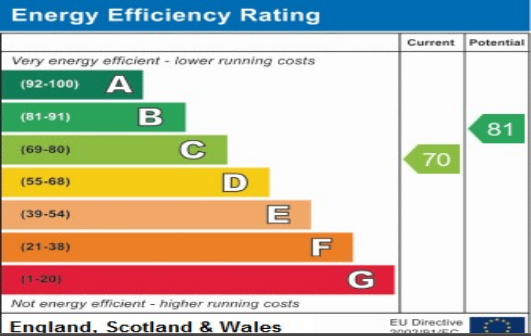
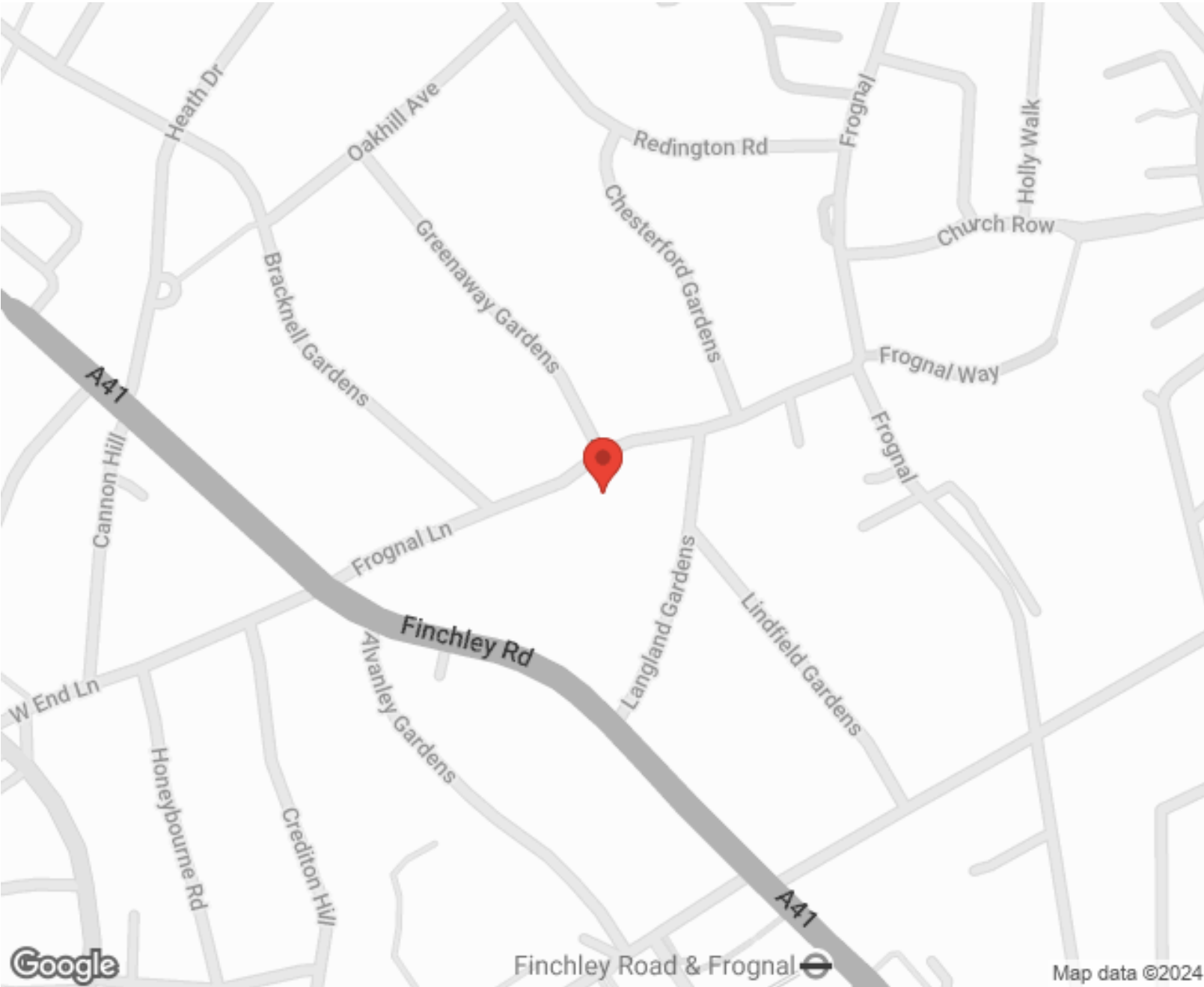
"I used Vita properties to find a flat recently and it was an overall professional, personalised and positive experience. Saira went the extra mile to accommodate to our needs and quick to help us whenever possible."



**MORE INFO, PICTURES,
CONTACT ON
OUR WEBSITE**



"Vita Properties is a very professional agency. My experience with them was incredible and the entire team was very helpful and kind throughout the renting process. I'd highly recommend!"



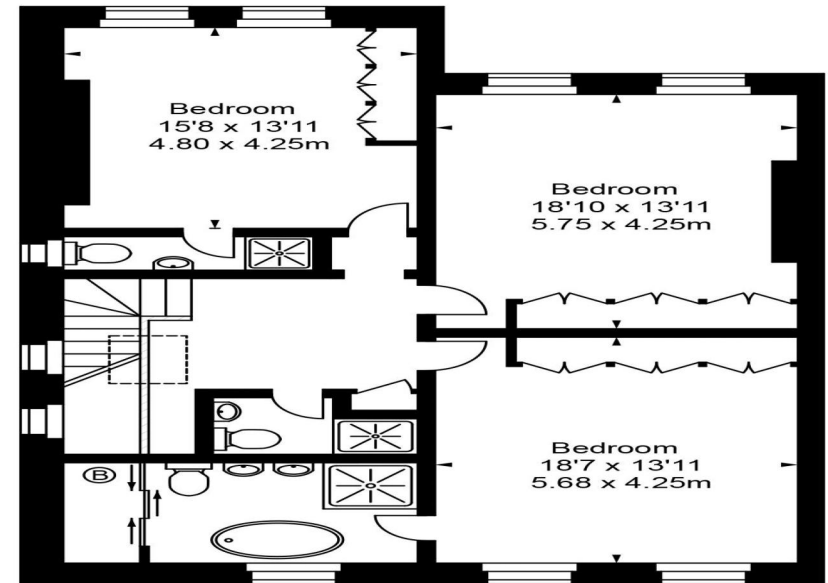
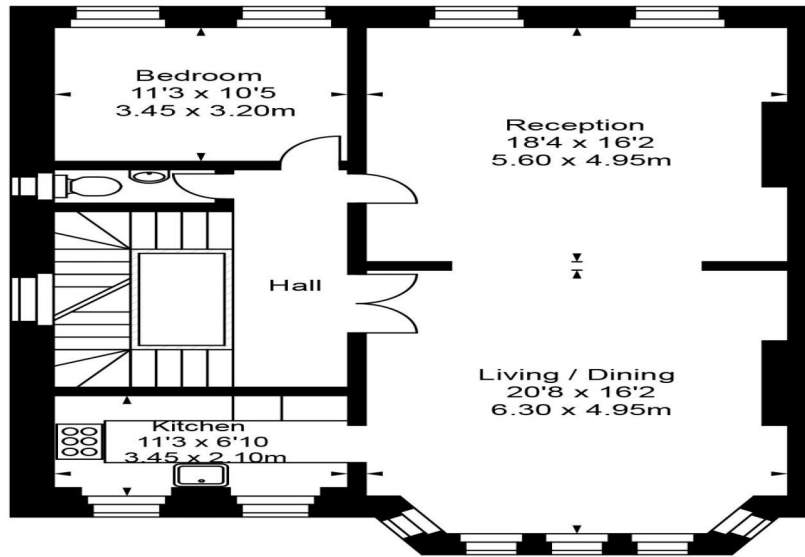
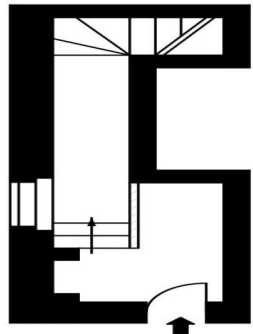
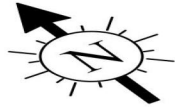
SCAN FOR MORE
GOOGLE REVIEWS

Google
★★★★★
4.9 Stars | 132 Reviews

Find us on social media

- vitaproperties
- VitaProperties
- VitaProperties

Frognal



Ground Floor

First Floor

Second Floor

Approx Gross Internal Area 2289 Sq Ft - 212.69 Sq M

FOR ILLUSTRATIVE PURPOSES ONLY. NOT TO SCALE.

Whilst every attempt has been made to ensure the accuracy of the floorplan shown,
all measurements, positioning, fixtures, fittings and any other data shown are
an approximate interpretation for illustrative purposes only and are not to scale.
No responsibility is taken for any error, omission, misstatement or use of data shown.
Floor plan by www.bestangle.co.uk